

**MOOLARBEN COAL OPERATIONS - COMMUNITY CONSULTATIVE COMMITTEE**  
**MEETING No. 38**

**Date:** Tuesday 6<sup>th</sup> September 2016  
**Time:** 4:05pm  
**Location:** Moolarben Coal Open Cut Administration Board Room, Ulan  
**Attendance:** Independent Chairperson  
Lisa Andrews (LA)

Community Members

Bev Smiles (BS) (Mudgee District Environment Group)  
David Stokes (DS)

Moolarben Coal Operations

Steve Archinal (SA)  
Graham Chase (GC)  
Trent Cini (TC)

Apologies

Andrew Palmer (AP)  
Annette Riley (AR) (Ulan Public School)  
Julia Imrie (JI)

Absent

Aleshia Lonsdale (AL) (Mudgee Local Aboriginal Council)  
Max Walker (MW) (Mid-Western Regional Council)

## **1. Introduction and Welcome**

Lisa Andrews (LA) confirmed she receives a fee from Moolarben Coal Operations (MCO) for chairing the CCC meeting.

## **2. Apologies**

Andrew Palmer (AP)

Annette Riley (AR) (Ulan Public School)

Julia Imrie (JI)

## **3. Confirmation of Previous Meeting Minutes**

The minutes from Meeting 37 were confirmed by BS and seconded by DS.

## **4. Business Arising from Previous Minutes**

Responses provided to action items from meeting 37.

**Meeting 37 Action 1** – MCO to provide a presentation on Water Management Plan to CCC once approved, including information on how water inflows are calculated.

GC explained that the revised Water Management Plan is required to be submitted to the Department for Planning and Environment by the end of October 2016 for approval and once Approved MCO will provide a presentation on Water Management Plan to CCC, including information on water inflows.

**Meeting 37 Action 2** – MCO to add locations of surface water monitoring points to presented water graphs.

MCO provided several printed A3 plans of the water monitoring points to enable CCC members a better understanding of the locations of each of the surface water monitoring points

**Meeting 37 Action 3** – MCO to investigate feasibility of MCO Cultural Heritage Officer attending Ulan Public School to share cultural heritage knowledge with students.

GC explained that a process to enable this to progress has commenced and is hopeful that this can be achieved in the near future

**Meeting 37 Action 4** – Provide hard copy of Annual Review to JI.

A hard copy of the Annual Review was provided to JI.

**Meeting 37 Action 5** – GC to provide update on Drip Deed upon receipt of additional information from the State Government.

The Drip deed has not progressed any further to date. Option 2 is currently on foot and will remain current until March 2017.

**Meeting 38 Action 1** – MCO to provide update on Drip Deed upon receipt of additional information from the State Government.

## 5. Correspondence

A hard copy of the Agenda, Previous meeting minutes, and CCC Presentation was provided to all meeting attendees.

Correspondence to the CCC since meeting 37 included the following:

- 14/6/16 – Email from Midwestern Regional Council requesting that Chair send information about CCC direct to Cr Walker
- 27/6/16 – Email from Chair to MWRC advising that all information is sent to MWRC & Cr Walker direct; and confirming email address.
- 1/7/16 – Email to CCC members with draft minutes from meeting no.36 (14th June 2016).
- 2/7/16 – Email from Julia requesting that her request for the volume of groundwater inflows to the Open Cut and explanation of how Site Water balance is calculated be included in the minutes.
- 26/8/16 – Email from chair to all CCC members with the Meeting Notice & Agenda for today's meeting
- 26/8/16 – Email from Julia Imrie with an apology for today's meeting.
- 5/9/16 - Email from Annette Riley with an apology for today's meeting.
- 6/9/16 - Email from Andrew Palmer with an apology for today's meeting.

Correspondence was confirmed by LA and seconded by GC.

## 6. CCC Update Presentation

GC provided an update on community interaction, visitors to site, donations and recent MCO achievements.

GC provided an update on operations and exploration, environmental monitoring, rehabilitation, community complaints, approvals and Underground Project update.

BS questioned the response to Action 1 regarding asking about groundwater inflows. GC noted that groundwater take is reported in Annual Reviews in accordance with approved Water Management Plan. GC reiterated that MCO would provide a presentation on Water Management Plan to CCC once approved. GC noted that groundwater predictions are included in environmental assessments, most recently in the UG1 Optimisation Modification providing reference to the approved UG1 modification assessment for further details regarding predicted groundwater inflows in the complex.

**Meeting 38 Action 2** – MCO to provide a reference page for the UG1 groundwater impact assessment regarding predicted groundwater inflows in the complex. [Refer to Moolarben Coal Complex UG1 Optimisation Modification Environmental Assessment Appendix B Groundwater Assessment. (Dundon Consulting, 2015)]

## 7. General Business

LA to write to MWRC for the election of a new CCC delegate post local government elections

DS asked how far along OC2 has progressed? GC provided a response as to where operations have progressed, SA explained where the operations were mining in OC2.

GC discussed the Coal Miners Cup, part of the Mudgee Running Festival, a friendly competition between the three mines raising money for charities. Wilpinjong won the Coal Miners Cup this time around and donated the money to Life Skills

BS asked how the mine site performed relative to the recent rainfall event that took place, GC advised that the site water management system performed appropriately and no water releases were undertaken from site

BS asked the status of the exploration program to the North of the mine. GC explained that the REF has been withdrawn from the department and the program is currently under review.

BS raised her concerns regarding the status of the rural fire brigade in the region, given the reducing numbers of landholders in the region. General discussion followed including the first response to incidents by mine personnel and contribution of equipment and people to both traffic and fire events. GC and SA agreed that MCO would look into the issue.

**Next Meeting:** 29<sup>th</sup> November 2016 - 3pm.

*Meeting Closed at 5:02pm*

# Community Consultative Committee Update

September 2016



# Community Support Program 2016



## RECOMMENDATIONS R1

- Lake Windamere Under Canvas
- Mudgee Cycle Club
- Mudgee Readers Festival
- Mudgee Show Rodeo
- Mudgee Rugby League
- Rotary Club Mudgee
- Sculptures in the Garden
- Henry Lawson Society
- Ulan Public School
- Watershed Landcare
- Wenonah Lodge Gulgong

**Need funding?**  
Moolarben Coal, supporting community initiatives.

**Moolarben Coal is a proud member of the local community.**

Through our Community Support Program we can help fund your community project, event or activity.

Call for applications:  
Applications close  
Friday 15 April 2016.  
Visit [moolarbencoal.com.au](http://moolarbencoal.com.au) for an application and more information.

Since 2010, Moolarben Coal has distributed more than \$900,000 in community grants and sponsorships in the Mudgee region.

  [moolarbencoal.com.au](http://moolarbencoal.com.au)

# Other Donations

- Thursday night fundraiser
- Since 2014 this initiative has raised \$20,000



# Visitors to site

- Official opening of the Moolarben Stage 2 Open Cut 4 Expansion
- Completed 60 days ahead of Schedule and under budget



**贺信**

克煤澳洲公司、莫拉本煤矿、四号露天矿项目团队，在莫拉本煤矿二期四号露天矿投产之际，谨代表兖矿集团和澳洲煤业，并以我个人名义表示热烈祝贺！

众所周知，克煤澳洲公司通过短短几年时间的运营，在澳大利亚资源领域迅速确立创新、透明和投资方面的全球领先地位。克煤澳洲公司兑现了兖矿集团和澳洲煤业持续改进的共同承诺，秉承追求安全、诚信和卓越运营的最高标准，尊重业务所在国和当地人的经营理念，成为中澳友好合作和跨文化融合的典型。

克煤澳洲公司是兖矿集团“六大基地”发展格局中的重要一环，作为克煤澳洲公司旗舰资产，莫拉本煤矿的发展一直受到兖矿集团和澳洲煤业的高度关注。二期扩产项目也被列为兖矿集团重点工程项目。

四号露天矿是二期扩产项目的重要组成部分，克煤澳洲公司、莫拉本煤矿和项目团队在获得审批处于预期个月的不利情况下，经过10个月的细致规划，精心施工，密切配合和艰苦施工，比原计划提前3个月实现项目建成投产，并且很好地控制了质量和投入，真正建成了示范工程。

成绩的取得实属不易！四号露天矿的正式投产体现了克煤澳洲公司、莫拉本煤矿及项目管理团队卓越工作能力，是代表兖矿集团、澳洲煤业、中澳友好合作和跨文化融合的典型。

**LETTER OF CONGRATULATION**

Yankuang Australia Ltd, Moolarben Coal Mine Pty Ltd and Open Cut 4 Project Team

On behalf of the Yankuang Group, Moolarben Coal Mining Company Ltd and the Australian Coal Industry, I would like to express our sincere and warm congratulations to all those who have worked hard within the Moolarben operations, particularly the Open Cut 4 expansion project.

As I well know your shared spirit, within the few short years of operation, Yankuang Australia has established itself within the Australian resources production and services industry as a leading and innovative company.

Yankuang Australia, Yankuang and Australia's shared commitment to operational excellence and a belief in operating to the highest standards of safety, integrity, quality and respect for our people and the communities in which we operate, has truly been the result of their hard work and dedication.

Yankuang also forms an important part of Australia's "Six Base" strategy to develop its resources. As Yankuang's flagship asset, the development of the Moolarben area has been an ongoing focus for Yankuang and Australia, with the Open Cut 4 expansion being listed as one of the key projects of the Moolarben Group.

As an integral part of the Stage 2 Expansion Project, the Moolarben Open Cut 4 was commissioned and delivered successfully. Despite several months of challenging approvals, within 10 months of detailed planning, careful supervision, close cooperation between all parties, diligent project management, hard work and perseverance overcame all challenges to complete the project and achieve the production milestone 3 months ahead of the planned schedule. Their focused commitment and passion for the project's quality, safety and cost have made Open Cut 4 a demonstration project across the Yankuang Group.

We know that an important achievement has not been easy. The commencement of the Open Cut 4 production reflects the project team's outstanding working capabilities. It is a result of Yankuang and Australia's shared commitment to operational excellence and a belief in operating to the highest standards of safety, integrity, quality and respect for our people and the communities in which we operate.





# Visitor to site

- U3A
- Pioneer House Nursing Home



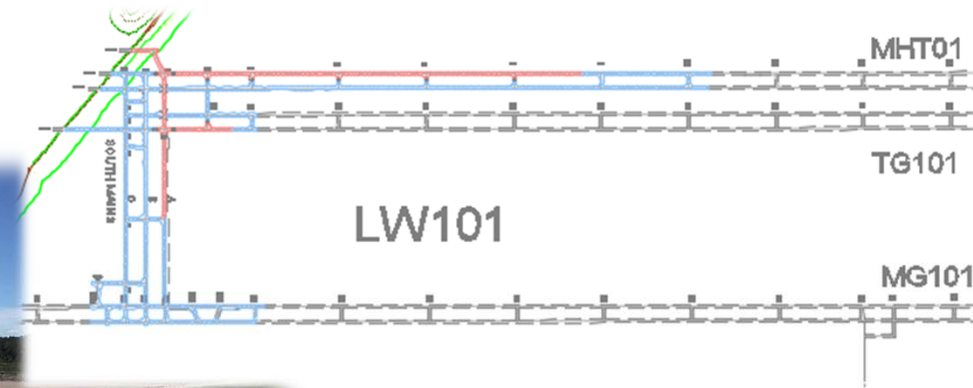
# NSW Mining HSEC Awards

- Winner Safety Excellence – Moolarben Coal, Mudgee
- Winner Environmental Excellence – Yancoal's Ashton Coal, Singleton



# Operational Update

- Mining operations in OC1 Mod 9, OC2 and OC4.
- First Coal from OC4 - 7 July 2016.
- Overburden placement in OC1, OC2 and OC4.
- Landform shaping OC1 and OC2.
- UG1 development (~6000m).
- Resource definition.



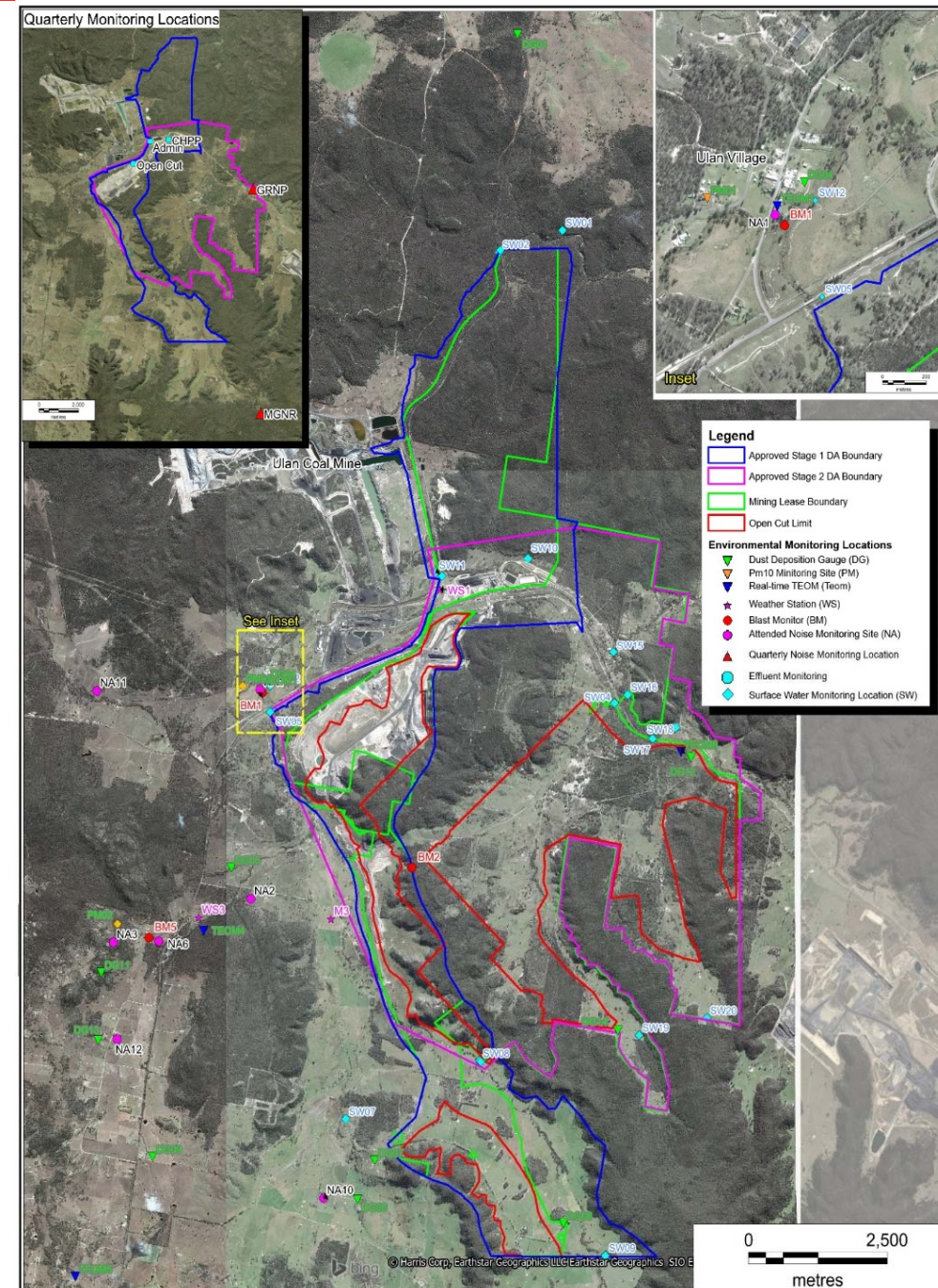
# Exploration Update

- Exploration planned for EL6288. UG4 and southern areas of EL 6288.
- Exploration rehabilitation and monitoring activities have continued during the period.



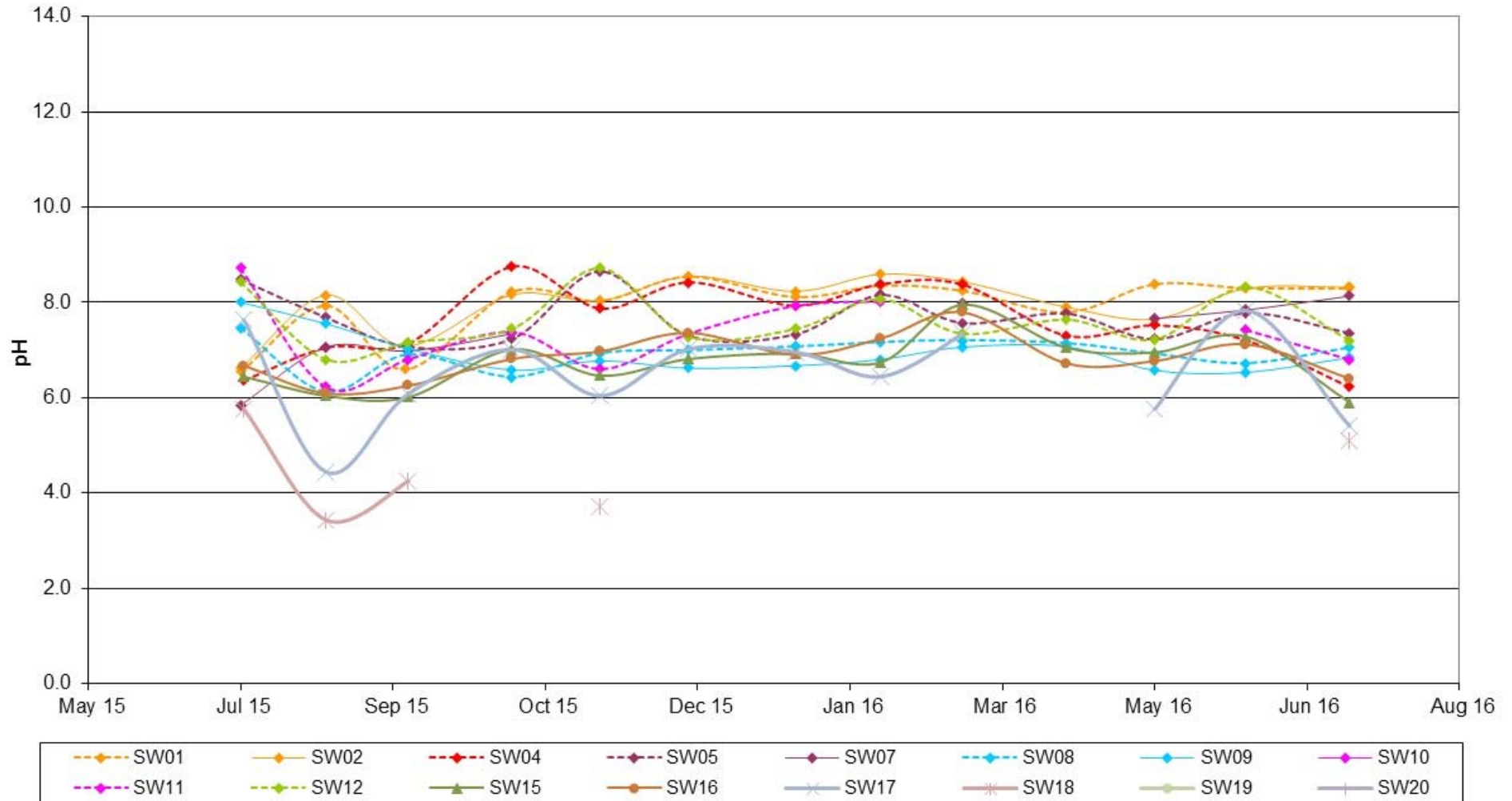
# Environmental Monitoring

- Monitoring network
  - Water;
  - Air quality;
  - Blasting;
  - Noise;
  - Meteorology.



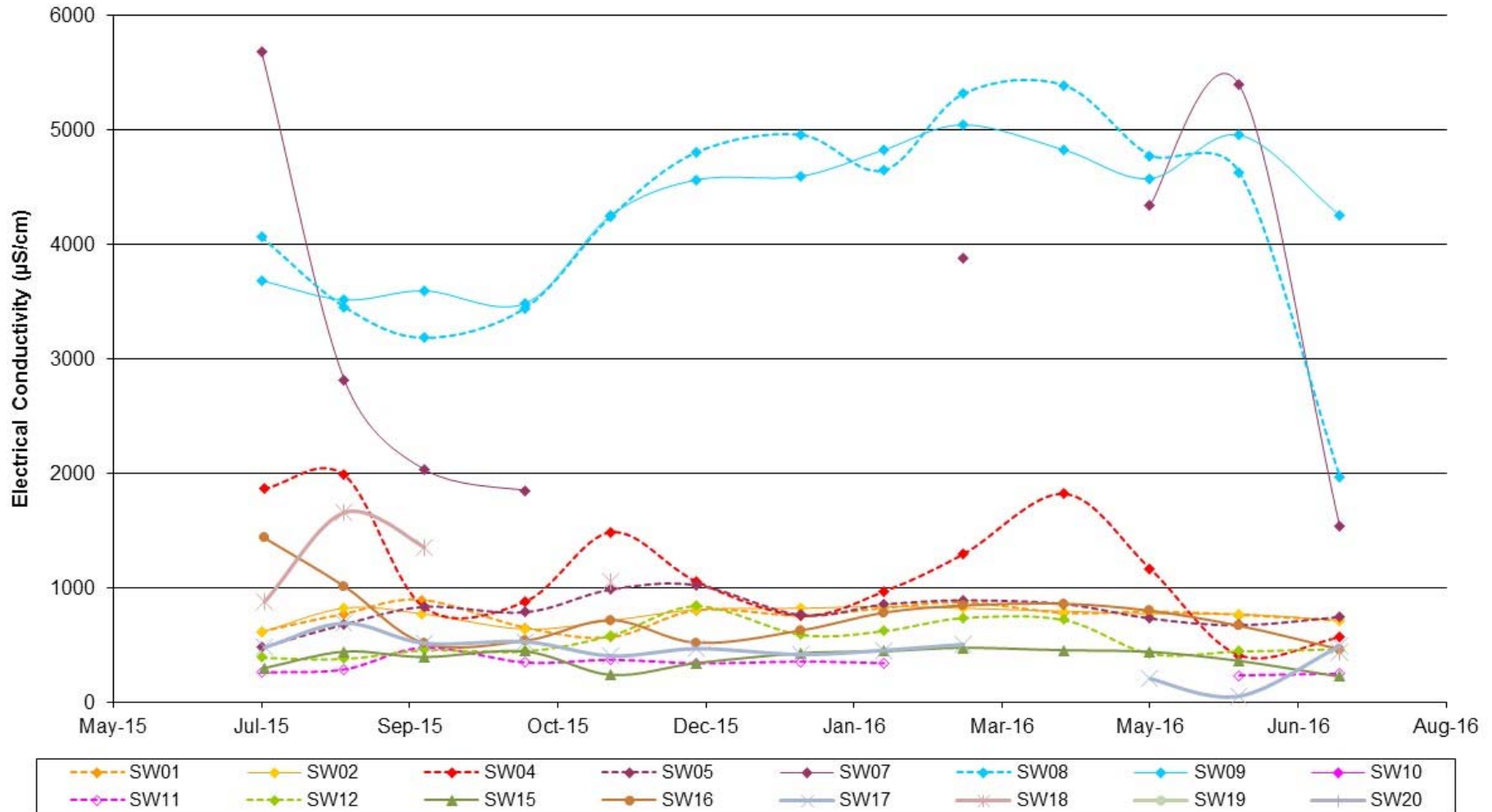
# Water Quality

Moolarben Surface Water pH  
July 2015 to July 2016



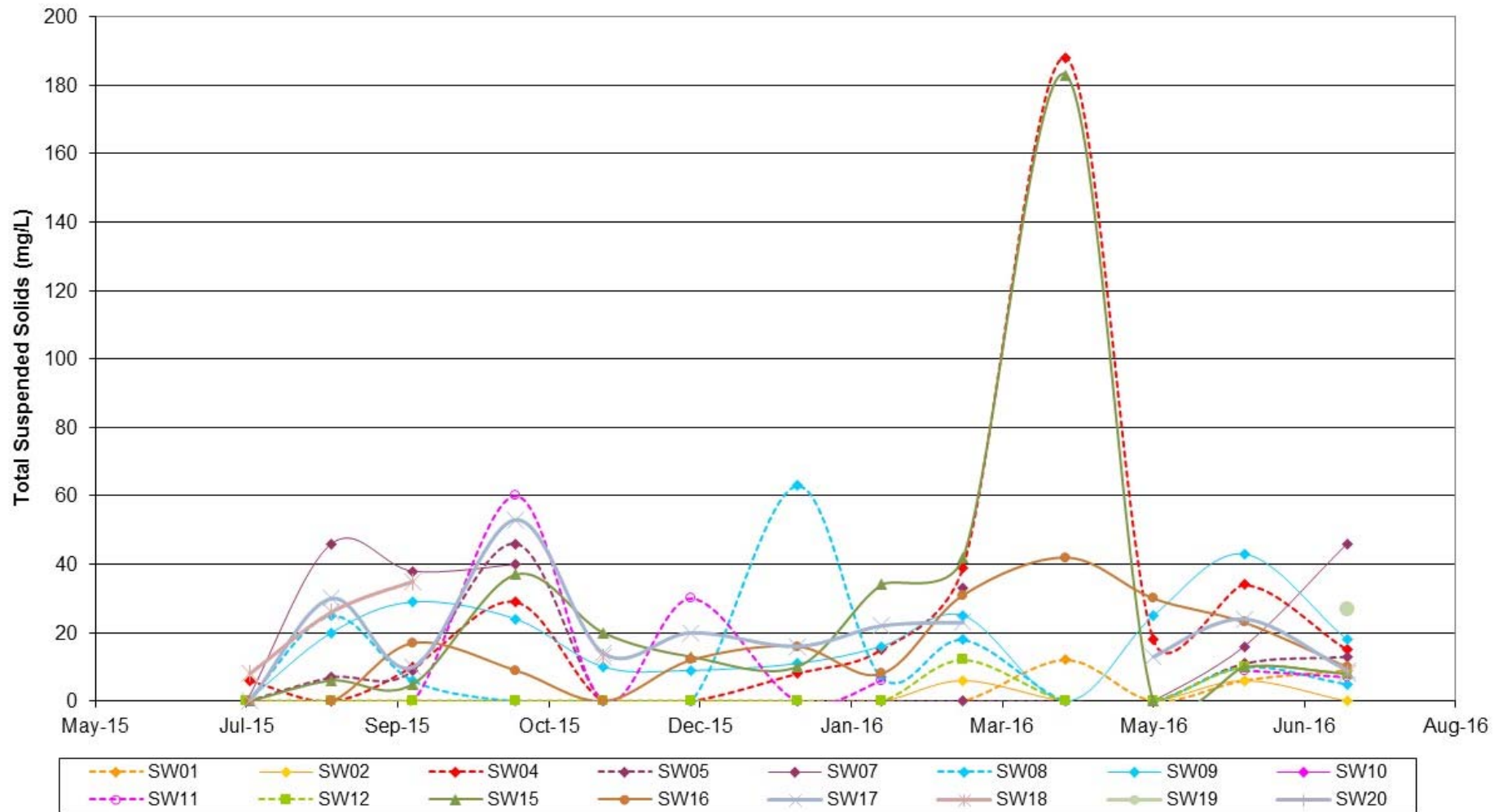
# Water Quality

Moolarben Surface Water Electrical Conductivity  
July 2015 to July 2016



# Water Quality

Moolarben Surface Water Total Suspended Solids  
July 2015 to July 2016





# Air Quality

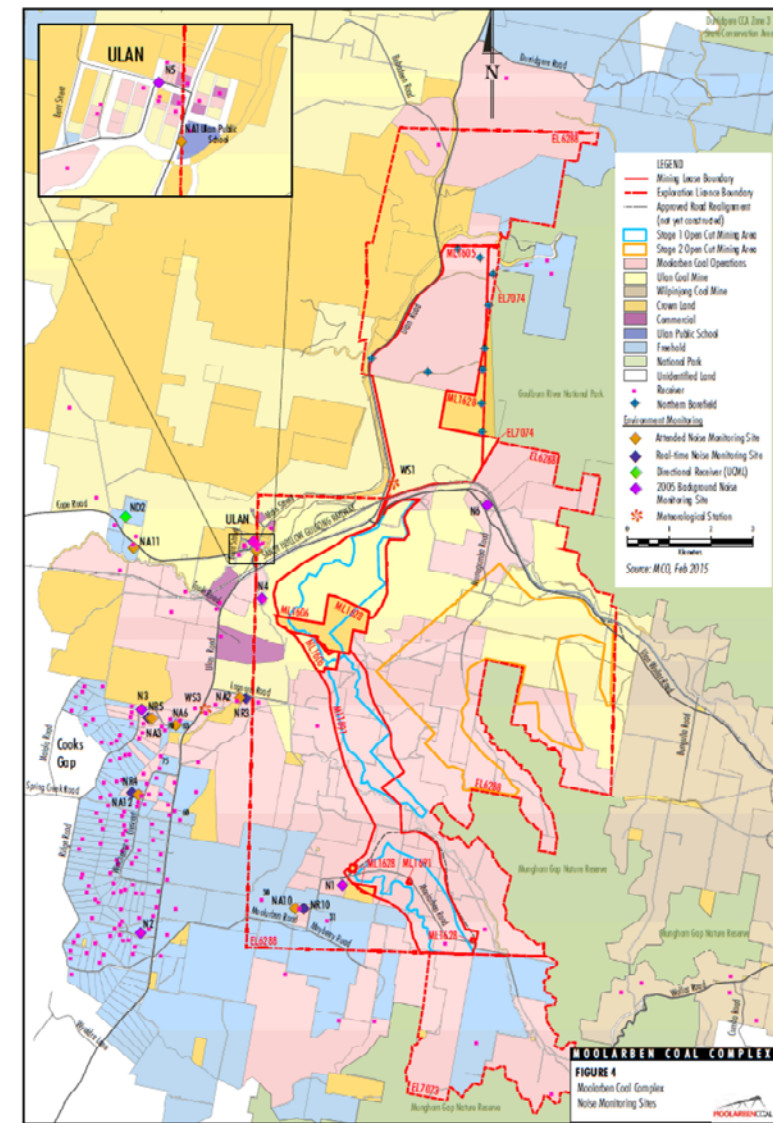
| Site                                   | August 2015<br>PM10 Annual<br>Average | August 2016<br>PM10 Annual<br>Average | Air Quality Criteria<br>PM10 Annual Average |
|--|---------------------------------------|---------------------------------------|---|
| Ulan School                            | 11.9                                  | 14.6                                  | 30.0  |
| Ridge Road                             | 9.2                                   | 9.1                                   | 30.0  |
| Ulan-Wollar Rd<br>(Relocated Aug 2015) | 11.7<br>(Murragamba)                  | 11.4                                  | 30.0  |

Monthly monitoring reports are available on our website:

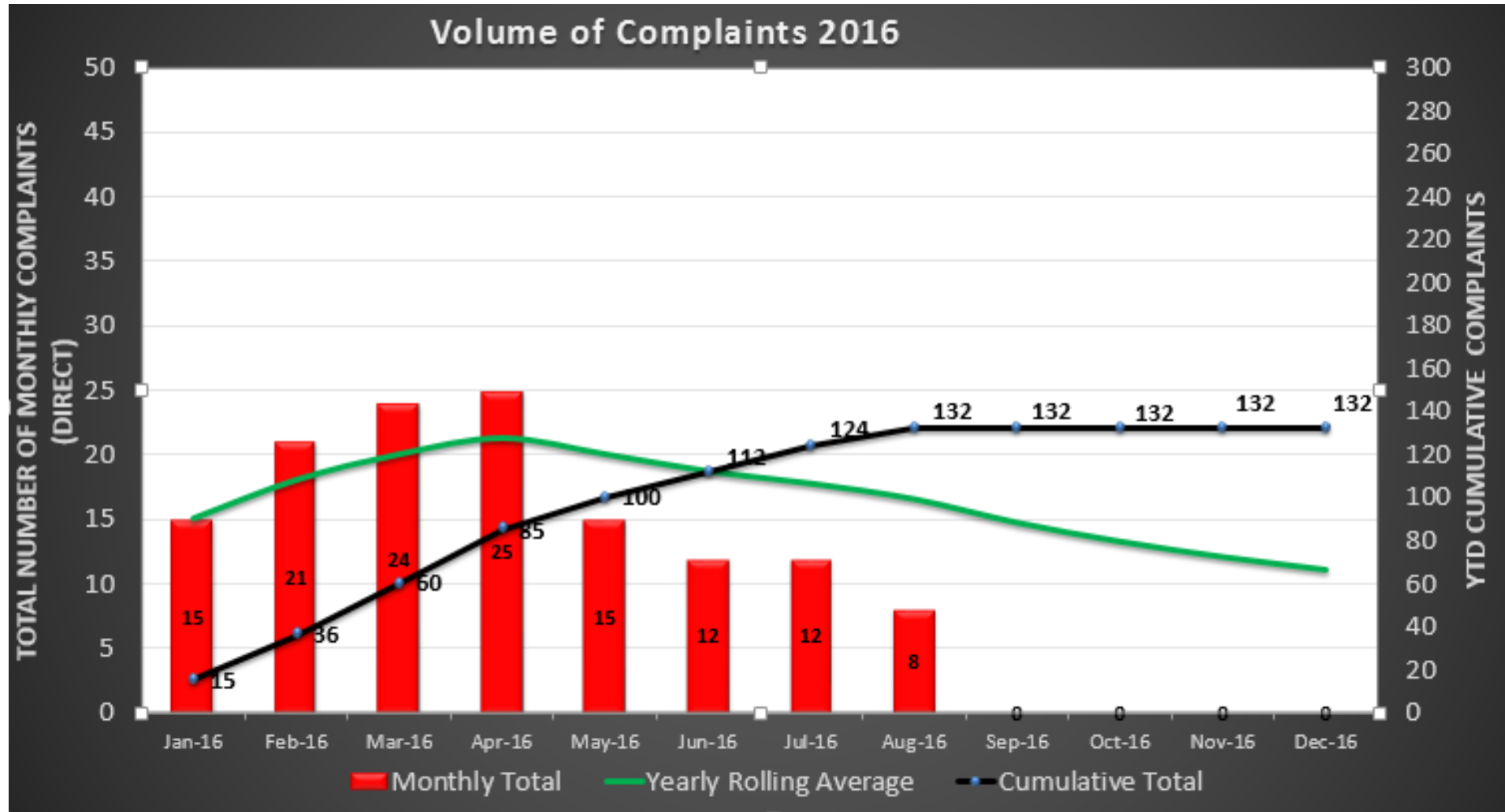
[www.moolarbencoal.com.au/environment-and-community/monitoring-results/](http://www.moolarbencoal.com.au/environment-and-community/monitoring-results/)

# Noise Monitoring

- On-going monthly & quarterly attended noise monitoring - All within criteria.
- Continued implementation of:
  - Planning controls - scheduling
  - Engineering controls - attenuation
  - Operational controls - bunds/screens
  - Real-time monitoring triggers
  - Real-time response protocols



# Community Complaints



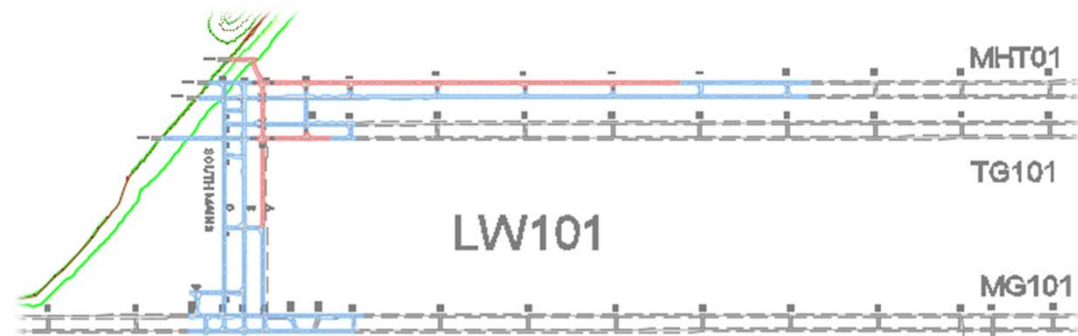
# Rehabilitation Update

- OC1 Mod 9 and OC2 areas land form shaping and topsoiling in progress. (> 20ha).
- Seeding to commence in coming months



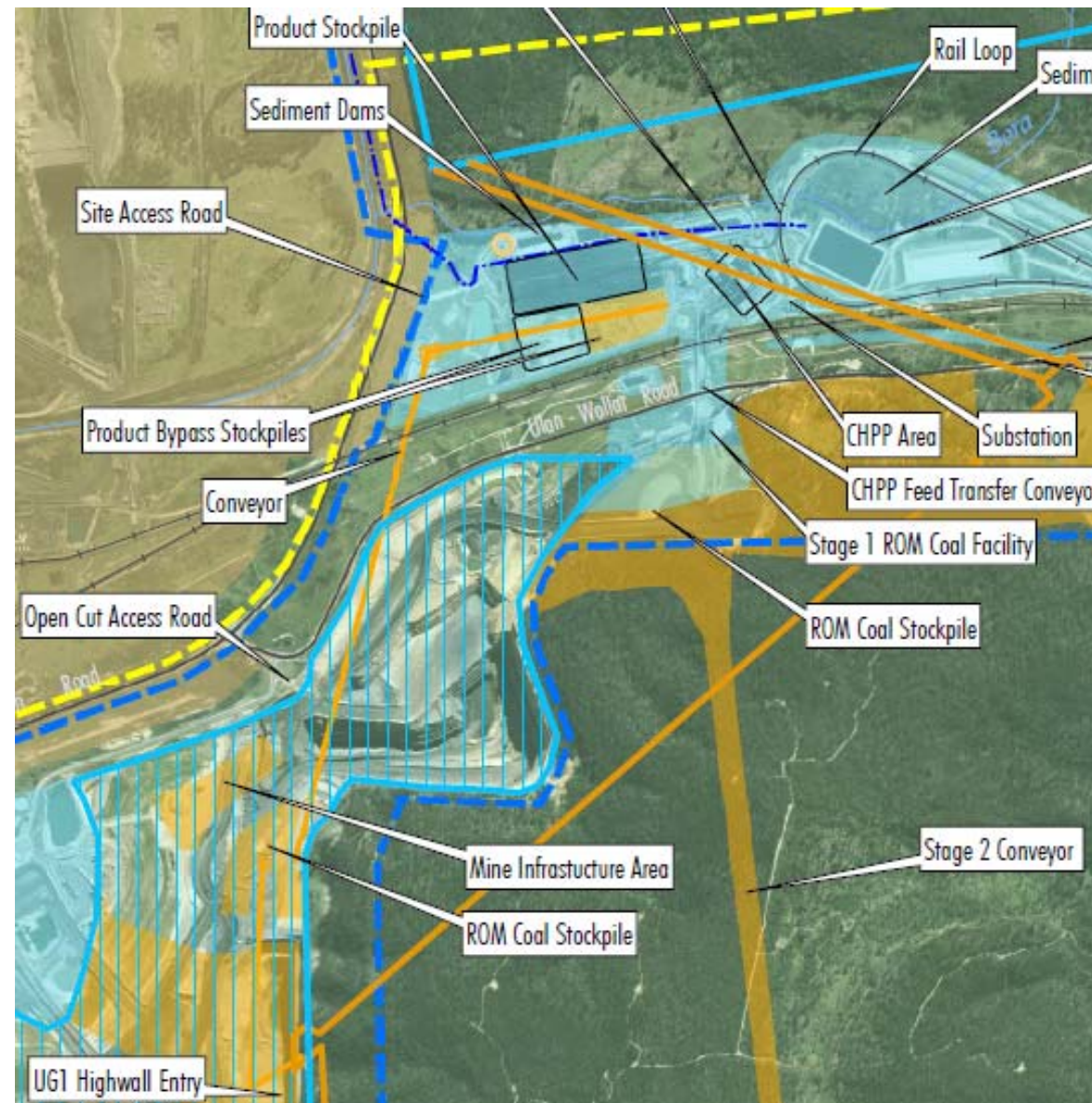
# Projects Update

- Opencut Expansion Project to be complete.
- UG Coal handling, workshop and civil earthworks on-going.
- Fifth continuous miner to commence Q4 2016.
- Progressive ramp up of personnel continues.



# Projects Update

- Conveyor Trace – UG1 to CHPP
  - Construction of Conveyor System Under Ulan-Wollar Road.
  - Temporary bypass road to be constructed during works.
  - Commencing October 2016 for ~2 months.



# Employment update

- Traineeships – 1<sup>st</sup> intake complete 8 for the OC and 4 for UG (Cert 2). Second intake initial planning commenced.
- Apprenticeship interviews complete, candidates being advised.
- Underground Recruitment on-going.
- Open Cut recruitment underway.





Community  
Consultative  
Committee Update

THANK YOU

September 2016

