

**MOOLARBEN COAL OPERATIONS - COMMUNITY CONSULTATIVE COMMITTEE
MEETING No. 41**

Date: Tuesday 13th June 2017
Time: 4:04pm
Location: Moolarben Coal Open Cut Administration Board Room, Ulan
Attendance: Independent Chairperson
Lisa Andrews (LA)

Community Members

Andrew Palmer (AP)
David Stokes (DS)
Helen Ungaro (HU) - Observer
Julia Imrie (JI)

Moolarben Coal Operations

Graham Chase (GC)
Mathew Croake (MCR)
Michelle Cavanagh (MCA)
Tim Oliphant (TO)
Trent Cini (TC)

Apologies

Aleshia Lonsdale (AL) - Mudgee Local Aboriginal Council
Bev Smiles (BS) - Mudgee District Environment Group
Cr John O'Neil (JO) - Mid-Western Regional Council
Steve Archinal (SA) - MCO

Absent

A hard copy of the Agenda, previous meeting minutes, and Meeting 41 CCC and Annual Review Presentations was provided to all meeting attendees.

1. Introduction and Welcome

Lisa Andrews (LA) declared that she is engaged by Moolarben Coal Operations (MCO) to chair the CCC meeting. LA introduced Helen Ungaro as an Observer for Meeting 41, representing Ulan Public School.

2. Apologies

Aleshia Lonsdale (AL), Bev Smiles (BS), CR John O'Neil (JO), Steve Archinal (SA).

3. Business Arising from Finalised Minutes

Responses provided to action items from meeting 39 and 40.

Meeting 39 Action 4– Members' names, position and email addresses to be placed on MCO website. GC – Action complete.

Meeting 40 Action 1 – MCO to provide numbers of trained firefighters employed by MCO and number released from duties during duration of fires.

GC - Covered in CCC Presentation

Meeting 40 Action 2 – MCO to provide update on planned works in the Northern Borefields area. GC - Covered in CCC Presentation.

Meeting 40 Action 3 – MCO to ensure all presentation slides are available on the MCO website. GC - Complete.

Meeting 40 Action 4 – MCO to provide water volume taken from UCML for 2016. GC – 210ML.

Meeting 40 Action 5 - Cr John O'Neil advised that he would raise the matter of the policy for maintenance of Council Roads at the next Council Meeting.

LA - Correspondence from Cr O'Neil indicated that MWRC's assesses maintenance requests on an individual basis and recommended that JI submit a request to Council outlining the reasons why the road requires maintenance. Cr O'Neill stated that he would be happy to assist.

Meeting 40 Action 6 – CCC members to advise in which format they would like to receive the Annual Review. LA – Complete.

Meeting 40 Action 7 – MCO to provide details on the Vegetation Clearance Protocol and example of pre-clearance report content.

GC - Covered in CCC Presentation. Vegetation Clearance Protocol available in the MCO Biodiversity Management Plan (www.moolarbencoal.com.au).

Meeting 40 Action 8 – CCC members to return to LA completed Pecuniary Interest & Code of Conduct forms. LA – One form remains outstanding.

4. Correspondence

Correspondence to the CCC since meeting 40 included the following:

26/3/17 - Draft minutes to CCC members for comment. Comments received back from JI & BS (incorporated into final minutes).

10/4/17 – Email to CCC members with the finalised minutes from the 14th March meeting.

6/5/17 – Email to CCC members asking if they could like a copy of the Annual Review? Various responses back and forth. USB to be provided via post.

1/6/17 – Email to CCC members with the meeting notice and agenda for this meeting.

1/6/17 – Email from Bev Smiles with an apology for this meeting.

7/6/17 – Email from Cr John O’Neill with an apology for this meeting.

7/6/17 - Email to Cr O'Neill asking if he raised the road maintenance issue of Saddlers Creek Road at the MWRC Council Meeting?

7/6/17 - Email from Cr O'Neill advising that he had raised the matter. Response read out for CCC members.

LA moved the Correspondence. DS seconded the Correspondence.

5. CCC Update Presentation

GC provided an update on community, visitors to site, operations and exploration, environmental monitoring, complaints, rehabilitation, land management, the Vegetation Clearance Protocol, approvals, an Underground Project update, Emergency Services and an employment update.

Jl asked about the water make from Underground development. GC advised a peak water make of 65 L / second. Discussion regarding historical groundwater reports and assumptions ensued.

Jl asked about the status of work in UG4 (off Saddlers Creek Road). GC advised that exploration work in the area is yet to be completed. The drilling of three production bores in the area is being planned. Jl raised the potential for MCO to contribute to the maintenance of Saddlers Creek Road. Jl noted that Council in the past has advised that Saddlers Creek Road is not in its maintenance program and therefore she has had to pay for maintenance to be undertaken. LA reiterated Cr O’Neill’s response regarding maintenance of Council roads.

Jl questioned whether installation and use of proposed Production Bores in the Northern Borefields area would have impacts on the Goulburn River. GC advised that the bores are screened in the Ulan and Permian seam, and not the Triassic seam. Note: Further detail on the groundwater can be found in the Stage 1 and Stage 1 Modification 7 Environmental Assessments (www.moolarabencoal.com.au).

DS questioned whether there is one hill left to be mined in Open Cut 2. GC and TO advised one hill is currently being mined with one further hill to be mined in Open Cut 2, with additional areas on the slope of the ridge..

Jl advised that on the nights of 4 and 5 June mine noise was louder than usual.

Jl questioned how long the Wild Dog Bait notification signs would remain in place. TC advised the signs would be displayed a minimum of 30 days, in accordance with legislation, and that they have been placed in plastic so they can remain in place longer.

Jl questioned whether (Stage 1) Modification 14 would include changes to Open Cut 3. GC advised that the Modification proposes some changes to the pit boundaries including open cut limits, infrastructure areas and dams. GC confirmed that all coal would be hauled by truck from Open Cut 3 to the ROM stockpile.

Jl questioned how much longer MCO will be operating in Open Cut 2. GC and TO advised that the area will be mined for a couple more years. Whilst the pit narrows, it also steepens which can take longer to mine. GC advised that the mining sequence has been designed to include more flexible dig and dump locations to manage noise impacts.

DS questioned whether MCO anticipates an increase in complaints once Open Cut 3 mining commences. GC advised that Open Cut 3 is more sheltered than Open Cut 2, with the ability to mine behind active faces and shield noise from receivers.

Jl questioned whether the Modification proposed an increased in volume of controlled water released. GC confirmed that it does.

DS questioned whether the Cooks Gap Fire Brigade, part of the Rural Fire Service (RFS), would have their proposed new shed located onsite at MCO. GC advised that MCO has committed to in-kind support for the RFS by a long-term lease of MCO land for the shed.

In relation to the Lifeskills Partnership program; Jl enquired whether a wage is provided to skillset workers. GC to confirm.

Meeting 41 Action 1 – MCO to advise whether a wage is provided to skillset workers.

[Note: The skillset workers from Lifeskills are paid. MCO engages and pays the three people through Skillset workforce.]

AP questioned whether MCO looks for specific skills when hiring their Trainees and Apprentices. TO advised that some have no industry experience. TO noted that some labour hire employees are being transferred to permanent employment.

LA questioned whether those inexperienced trainees and apprentices are mixed with more experienced operators on crew. TO confirmed there is a mix of experience levels across all four crews to provide appropriate mentoring.

6. Annual Review Presentation

GC provided an overview of the 2016 Annual Review which included Licences and Approvals, activities during the reporting period, environmental performance, water management, rehabilitation, community relations, and activities proposed during the next reporting period.

Jl questioned the content of the Underground 4 (UG4) Mining Operations Plan (MOP) Amendment. GC advised that the approval pathway for exploration drilling changed from via the Exploration Lease to via a MOP amendment.

Jl questioned the monitoring requirements and management actions of the Vegetation Management Zones in the Biodiversity Management Plan. GC and TC advised that the Zones are located on land owned by MCO which are outside of major surface disturbance areas and Biodiversity Offset Areas. TC advised that management actions within these Zones are carried out in accordance with the Biodiversity Management Plan.

Jl questioned whether MCO had plans to ameliorate the historical creek erosion on the Bobadeen property. TC confirmed that fencing is planned to be erected to control stock. TC advised that natural regeneration had been observed on the Bobadeen property.

Jl questioned whether any control actions for Spiny Rush was planned considering the risk it could spread into adjoining land and National Park. TC advised that monitoring of the location and spread of Spiny Rush are being conducted, and will inform the control strategy for the weed.

Jl questioned which piezometer required investigation. GC advised PZ55.

Jl questioned whether the mound adjacent to Ulan-Cassilis Road in front of MCO's coal stockpiles would remain. GC advised that the mound would remain in the medium term and be utilised for rehabilitation upon mine closure to shape the final landform. TC advised that the mound would shortly be hydromulched. GC advised that any rehabilitation conducted which would be disturbed again at closure is referred to as 'Temporary Rehabilitation'.

Jl questioned the intent of constructing dewatering bores above UG4 opposite the Drip when mining was not set to commence until 2022. Jl noted that the regional groundwater is recharged by rainfall and the evidence indicates connectivity between the regional groundwater system and the Goulburn River. GC confirmed that dewatering is planned to prepare for future mining in UG4 to reduce peak inflows upon commencement of mining, supply water to the underground and will also assist in understanding the groundwater response in the area. There was further discussion that the borefield pumping in advance of UG4 was included in the project approval (*note: following the meeting, GC checked the consent and confirmed that this is correct*).

7. General Business

LA advised that she attended a Department of Planning & Environment workshop on 10th May 2017 at Singleton, which provided a presentation on the revised CCC Guidelines and advised that the DP&E would soon be advertising for Independent Chairpersons for CCC's across NSW. Successful applicants will be categorised and paired appropriately with the projects.

LA sought support from current CCC members to nominate Helen Ungaro (HU) to the DPE to replace Annette Riley as Ulan Public School's representative on the CCC. No objections raised

Meeting 41 Action 2 – GC to meet with HU to provide an overview of MCO.

Jl raised that some contractors engaged by MCO may be accessing monitoring sites via private property.

Meeting 41 Action 3 – TC to discuss the matter further with Jl and contractors.

AP raised that the Mudgee Chamber of Commerce is introducing a Mudgee Gift card Campaign. GC confirmed he is the correct point of contact from MCO to discuss the initiative further.

8. Next Meeting: 12th September 2017 – 4:00pm.

Meeting Closed at 5:28pm

ACTION ITEMS:

ITEM	ACTION	BY WHOM	WHEN
1	MCO to advise whether a wage is provided to skillset workers	GC	Complete (Refer to Page 4)
2	GC to meet with HU to provide an overview of MCO	GC	Mutually convenient time
3	TC to discuss access on Jl's property	TC	ASAP

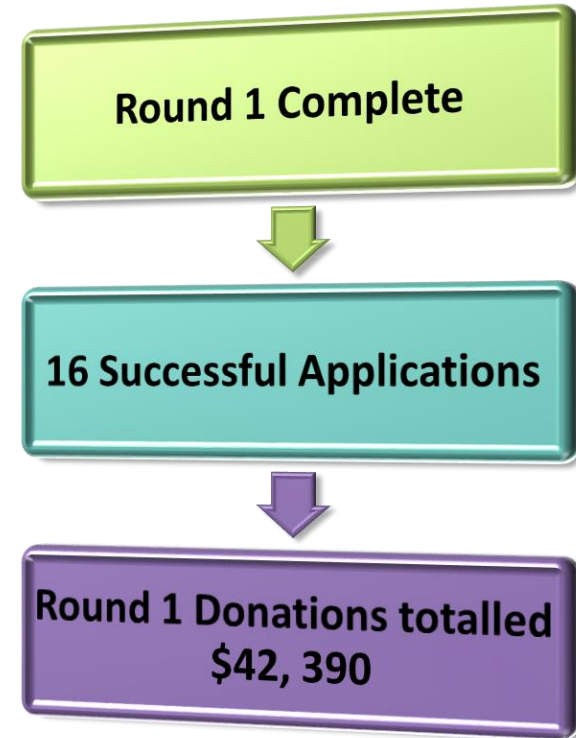
Community Consultative Committee Update

June 2017



Community Support Program Round 1 2017

Applicant	Description
Mudgee Running Festival	Event: Mudgee Running Festival Event Date: August 2017
Gulgong High School	Event: Try a Trade Event Date: 23-24 May 2017
Sculptures in the Garden	Event: Sculptures In the Garden Art Prize Event Date: 7-8 October 2017
PCYC Mudgee High School	Event: Colour Run Event Date: Oct 2017 Project: Aquaponics/Hydroponics
Cudgegong Cruisers	Event: Can Cruise Event Date: March 2018
Max Potential	Event: Max Potential Program Event Date:
Rotary Club of Mudgee	Event: Mathematical Minds Comp Event Date: 17 October 2017
Lifeskills Plus Gulgong Polocrosse	Project: Purchase of 'Softplay' equipment Project: Water Pipe System
Gulgong Mens Bowling Ulan Public School	Event: Annual Gulgong Bowls Tournament Event Date: Oct Long Wkend 2017 Project: Canberra Excursion
Mid-Western Dance Festival	Event: Mid-Western Dance Festival Event Date: July 2017
Hargraves Triamble Pony Club Henbury Sport & Rec Club (Kandos)	Project: Construct 25m Round Pen Project: Golf Club Seating
Lake Windamere Under Canvas	Project: Road Reconstruction



Next Round August 2017

Community Update

- **Mudgee High Schools
'Try-A-Trade'**



- **Mudgee High School Visit**
 - Site visit and talks to 25 students



■ Silk Road

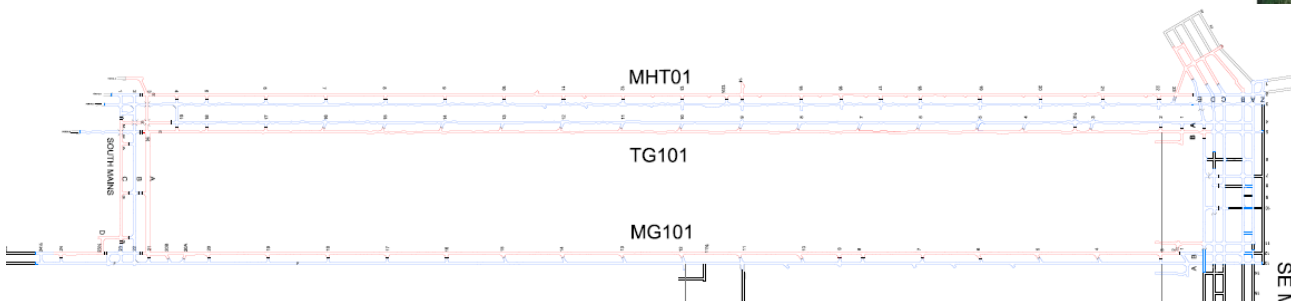
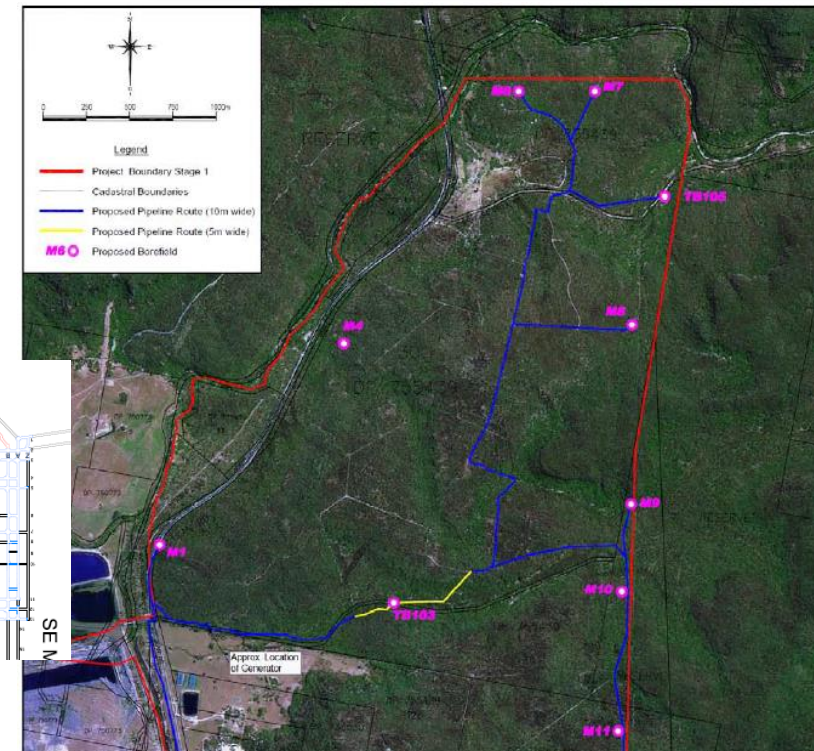
- Operations filmed by Xinhua News Agency's Sydney bureau and streamed live at the One Belt & One Road Forum in Beijing in May.
- Forum was attended by numerous world leaders

■ Chinese Exchange

- Delegation of Engineers and an Accountant from China spent 6 weeks at Moolarben.

Operational Update

- Mining operations in OC2 and OC4.
- Overburden placement in OC2 and OC4.
- Landform shaping OC1 and OC4.
- UG1 development.
- Northern Borefield – 3 locations being considered for drilling in July.



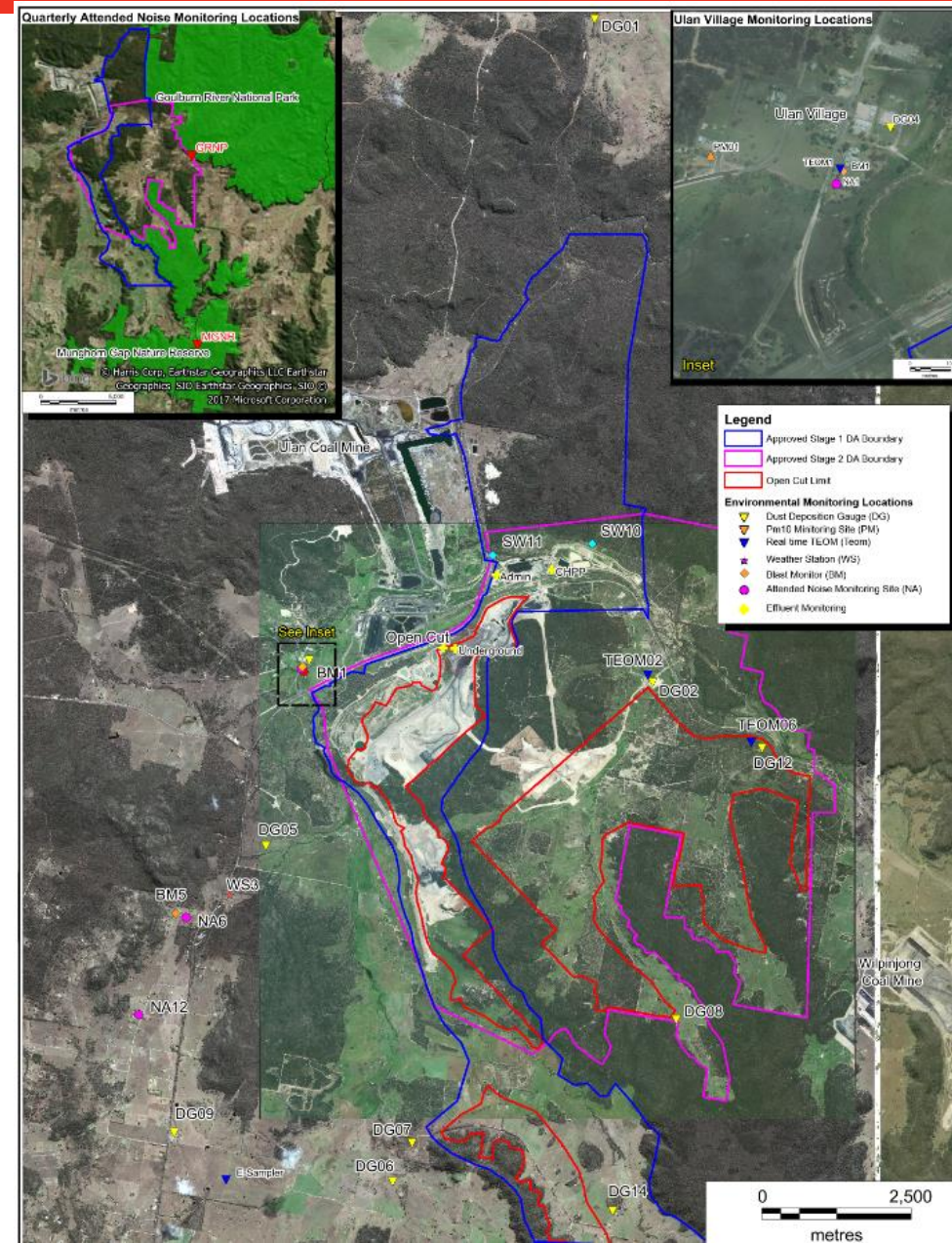
Drilling Update

- Drilling continued in UG4 and OC4
- Drilling commenced in UG1
- Exploration planned for EL6288 south areas.
- Rehabilitation and monitoring activities have continued during the period.

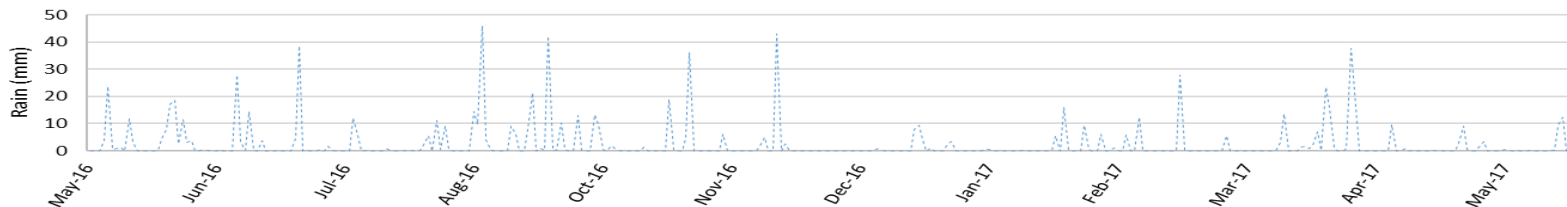
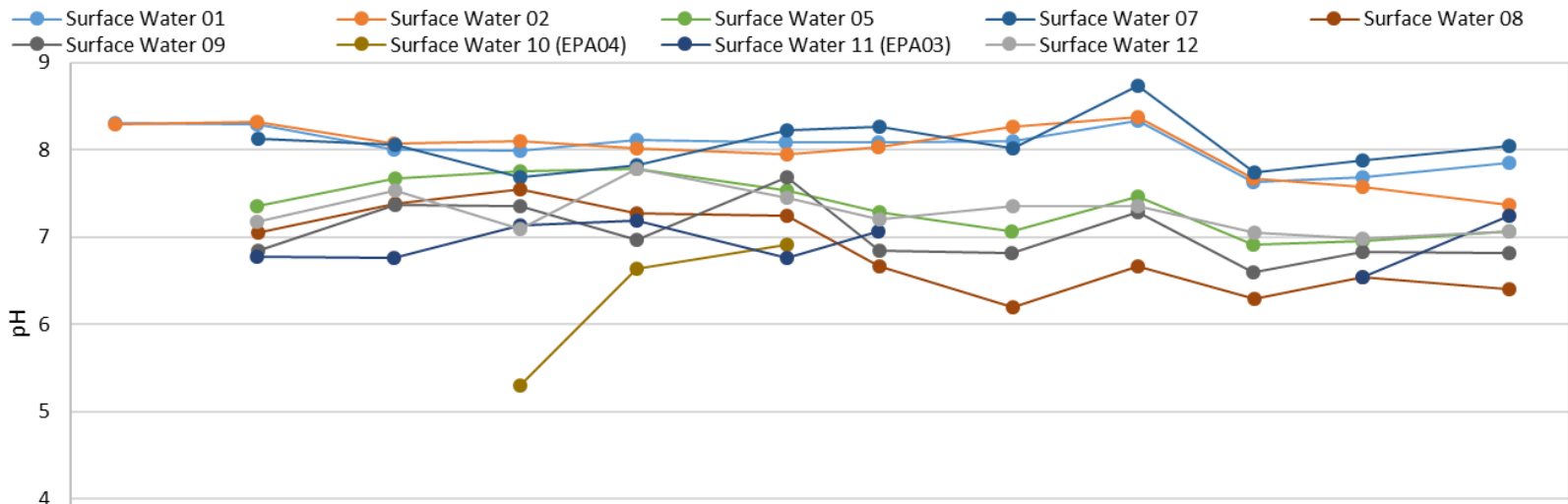
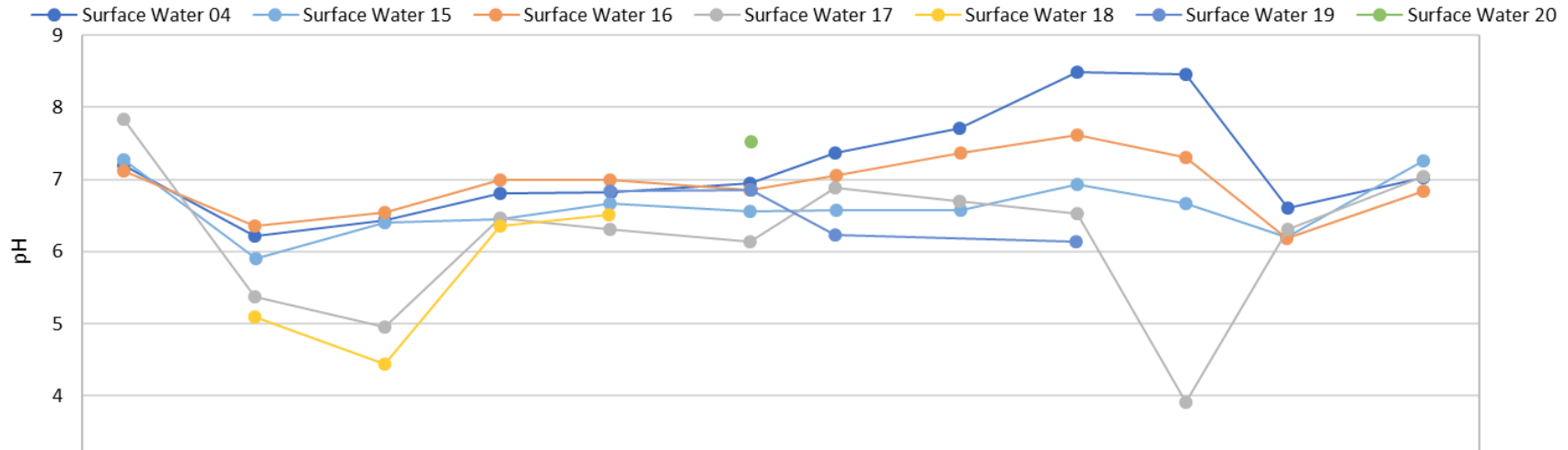


Environmental Monitoring

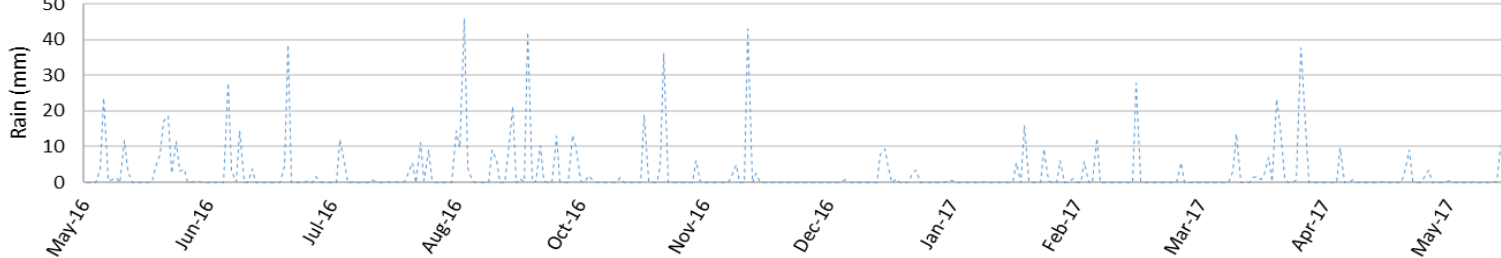
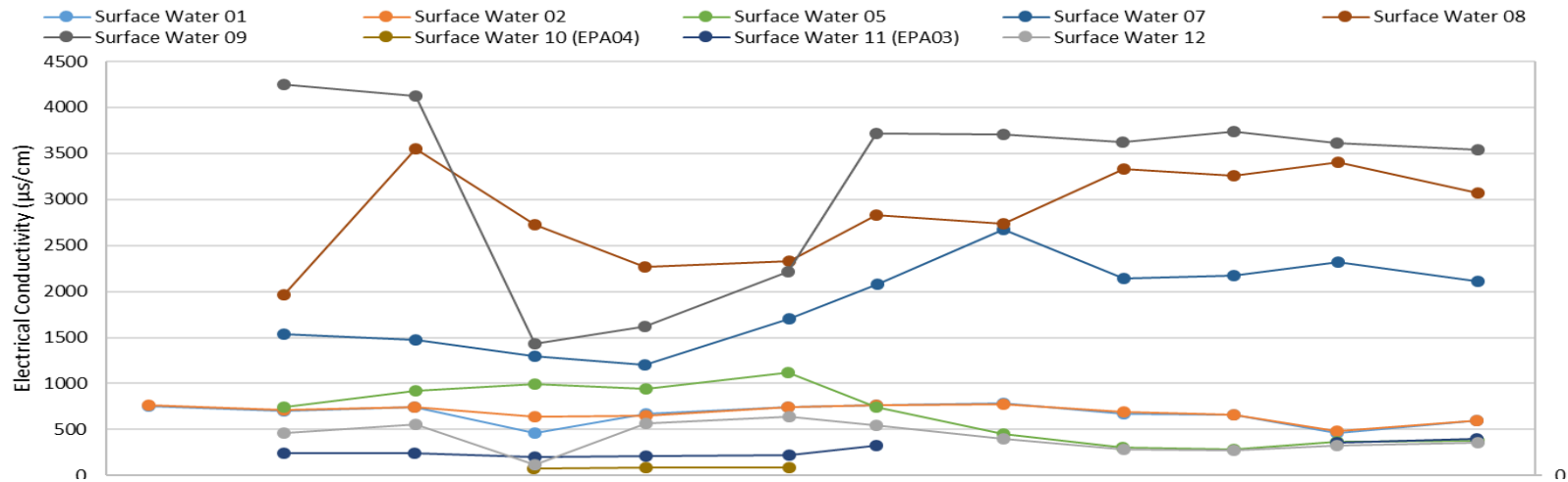
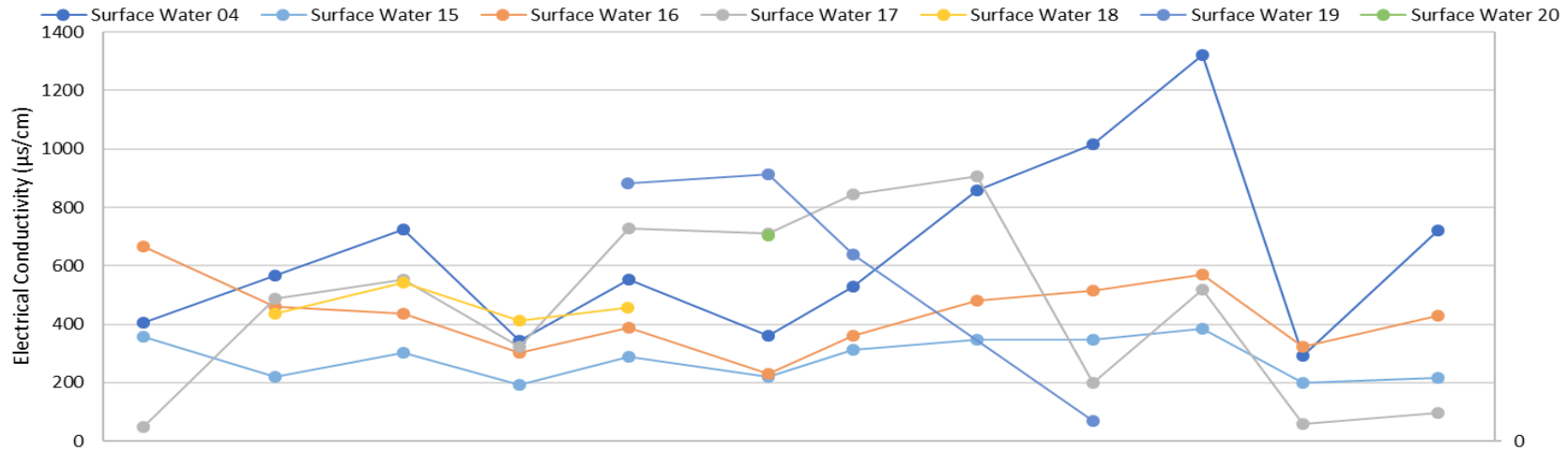
- Monitoring network
 - Water;
 - Air quality;
 - Blasting;
 - Noise;
 - Meteorology.



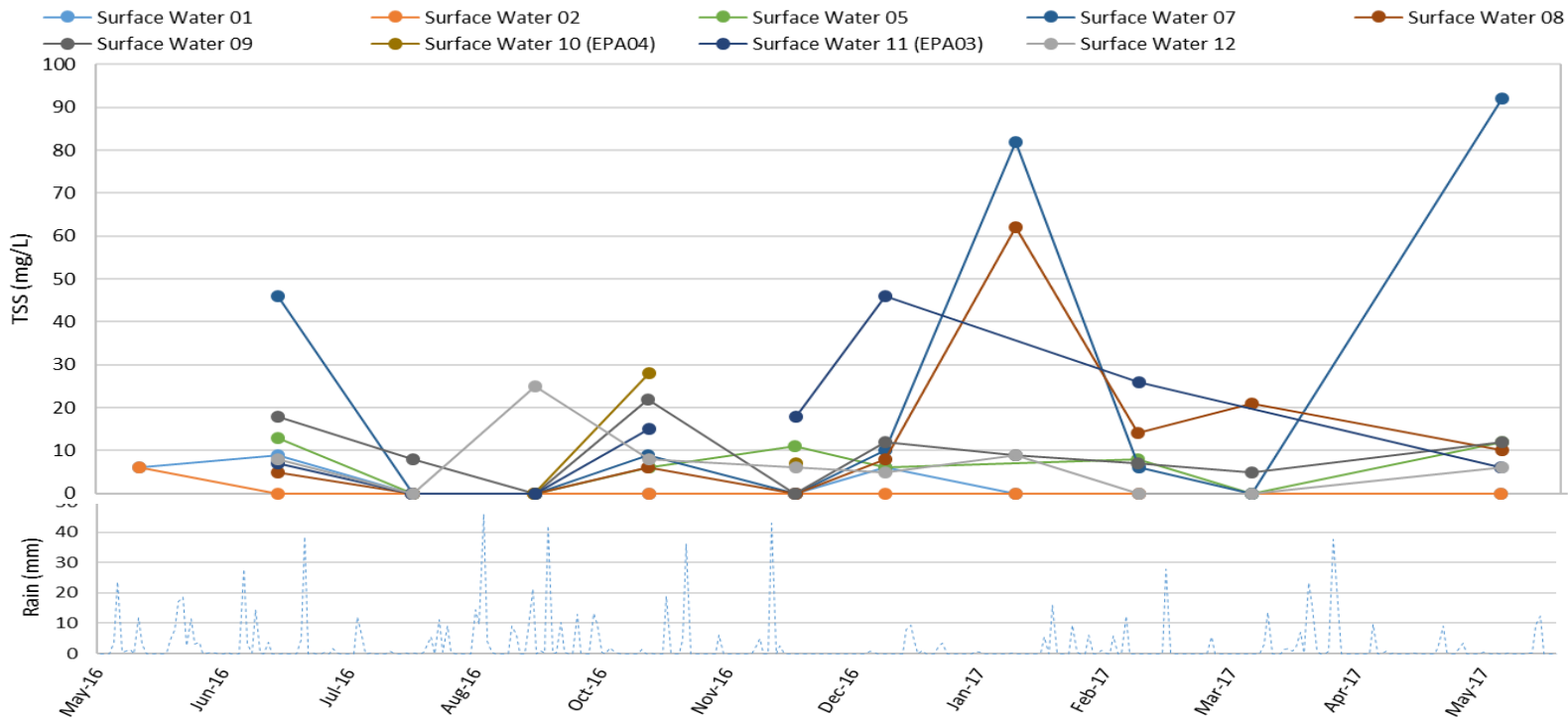
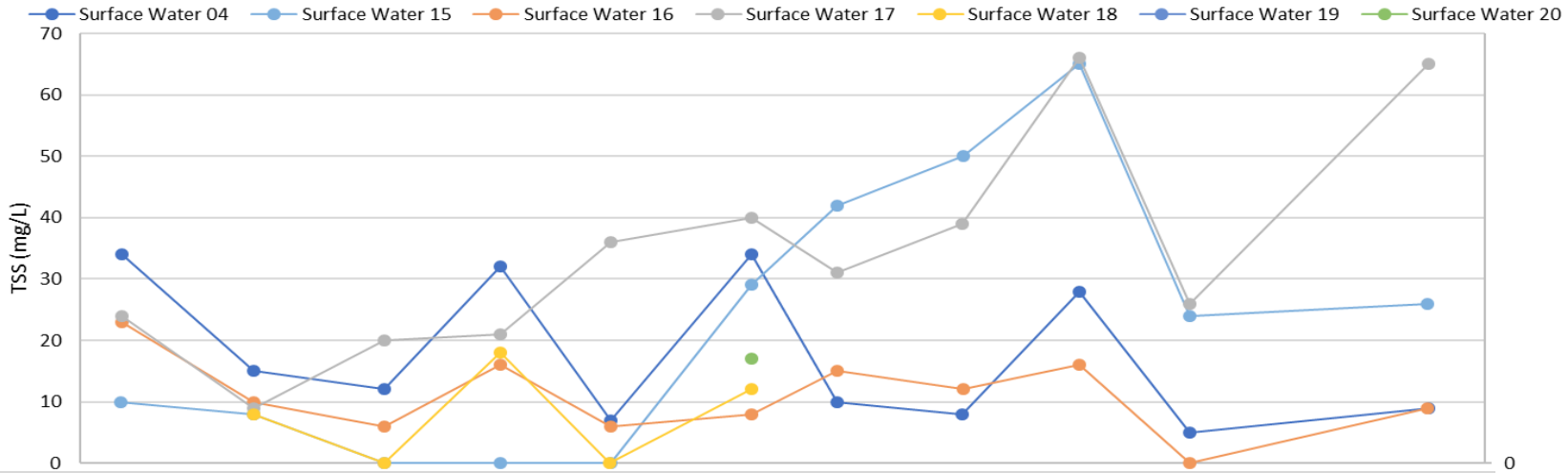
Water Quality



Water Quality



Water Quality



Air Quality

Site	May 2016 PM10 Annual Average	May 2017 PM10 Annual Average	Air Quality Criteria PM10 Annual Average
Ulan School	14.81	10.88	30.0
Ridge Rd / Moolarben Rd	9.1	11.1*	30.0
Ulan-Wollar Rd	12.99	10.25	30.0

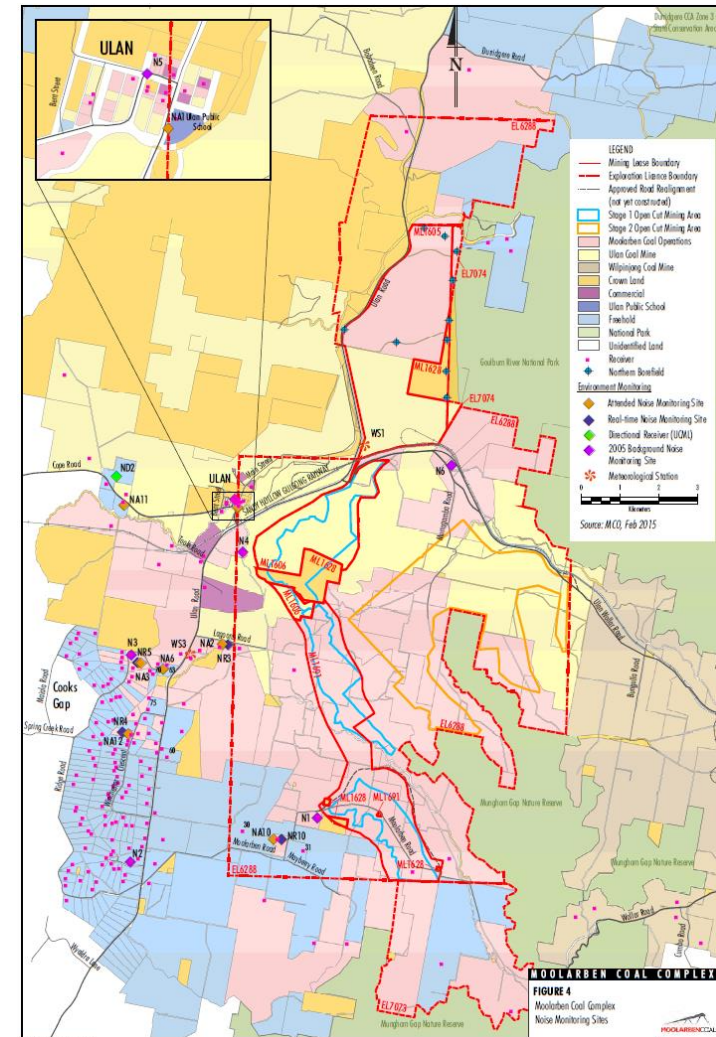
*rolling average from commencement

Monthly monitoring reports are available on our website:

www.moolarbencoal.com.au/environment-and-community/monitoring-results/

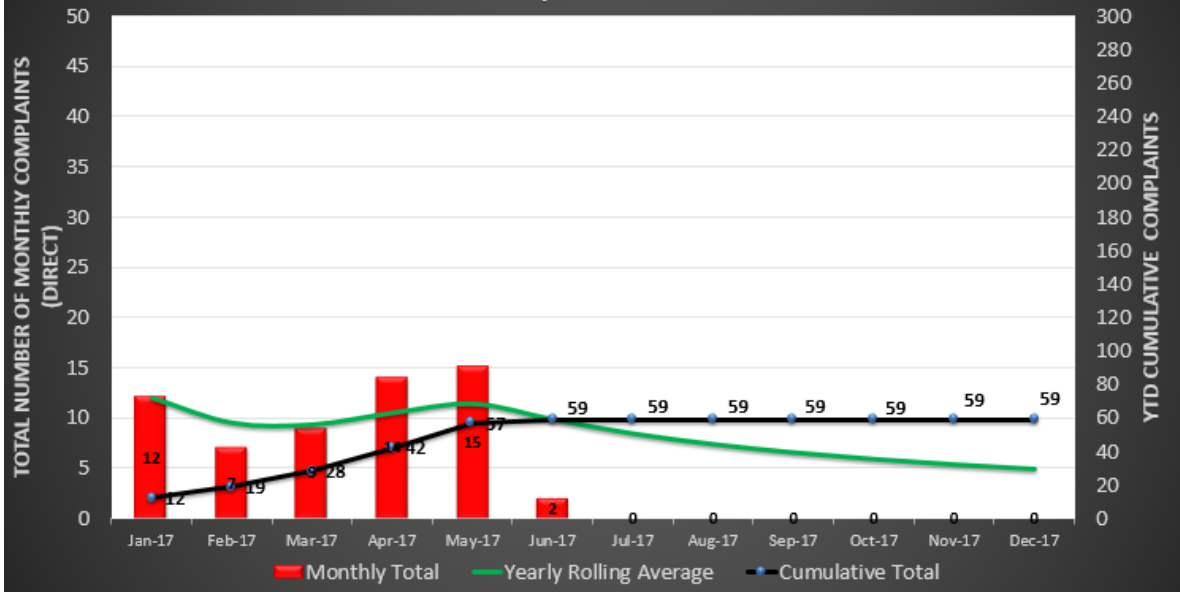
Noise Monitoring

- On-going monthly & quarterly attended noise monitoring - all within criteria.
- Continued implementation of:
 - Planning controls - scheduling
 - Engineering controls - attenuation
 - Operational controls - bunds/screens
 - Real-time monitoring triggers
 - Real-time response protocols

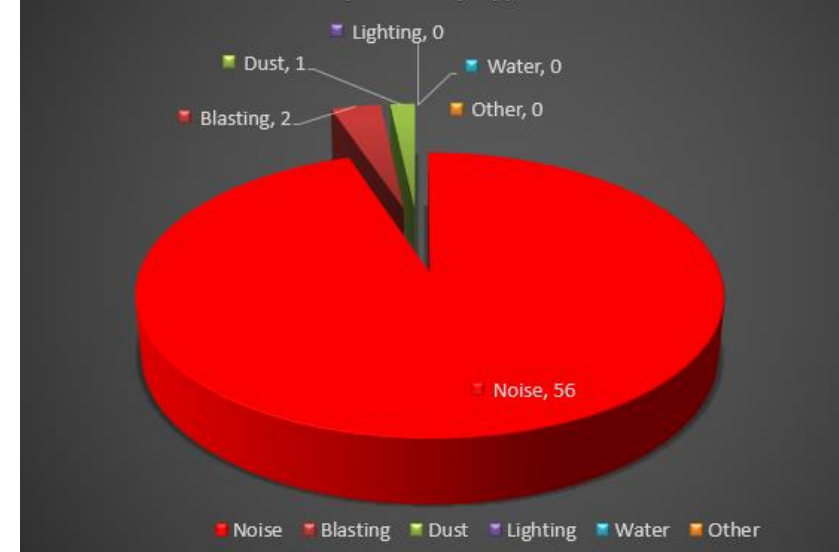


Community Complaints

Volume of Complaints 2017



Complaints by Type - 2017 YTD



Rehabilitation Update

- Open Cut
 - 12ha completed in OC1
 - 16ha within the OC4 out of pit dump
- Trails were completed using a drone to seed within the rehabilitation areas
- Planning has commenced for ~40ha to be completed prior to the end of 2017



Autumn Wild Dog Baiting Program

- MCO participated in the Local Land Services (LLS) Autumn Wild Dog Baiting Program
 - MCO is a member of 2 Wild Dog action groups, the Munghorn Wild Dog Group (MWDG) and the Hill End Wild Dog Group (HEWDG)
 - 233 baits laid across 8 MCO owned properties
 - 72.10% of baits taken
 - Next round of baiting in July 2017

Vegetation Clearance Protocol

- Introduction
- Methods
- Results
 - Hollows
 - Large woody debris
 - Weeds
 - Flora
 - Fauna
- Vegetation Clearance Protocol in Biodiversity Management Plan

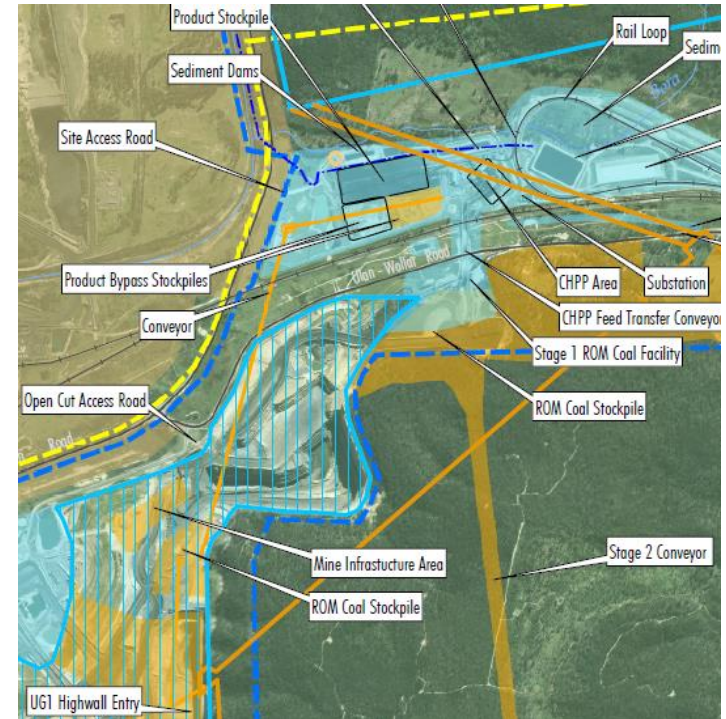
ECOLOGICAL AUSTRALIA PTY LTD

Appendix B: ROM GDP Fauna Species List

Scientific name	Common Name	TSC Act	EPBC Act
<i>Cracticus tibicen</i>	Australian Magpie	-	-
<i>Manorina flavigula</i>	Noisy Miner	-	-
<i>Vombatus ursinus</i>	Common Wombat	-	-

UG Project Update

- Administration complex, MIA Carpark and support infrastructure completed.
- Sizing station and product stockpile construction continues.
- Ventilation shafts and services on-going
- Longwall testing ongoing. AFC pans and shields commenced installation.
- Long-wall commencement scheduled for October.
- Material handling system commissioning from Oct to Dec 17



Open Cut Optimisation Modification

Modification Overview - Update

- Application to modify the Stage 1 and Stage 1 Project Approvals.
- The Modification involves:
 - Minor increase in disturbance to allow safe and efficient mining.
 - Refinements to the final landform.
 - Increase in annual rate of coal production from open cuts.
 - Other infrastructure refinements.
 - Increased rate of controlled release of water subject to Environment Protection Licence quality limits and associated water treatment facilities.
- An Environmental Assessment is being prepared.
- Environmental Assessment to be lodged in Q3 2017.

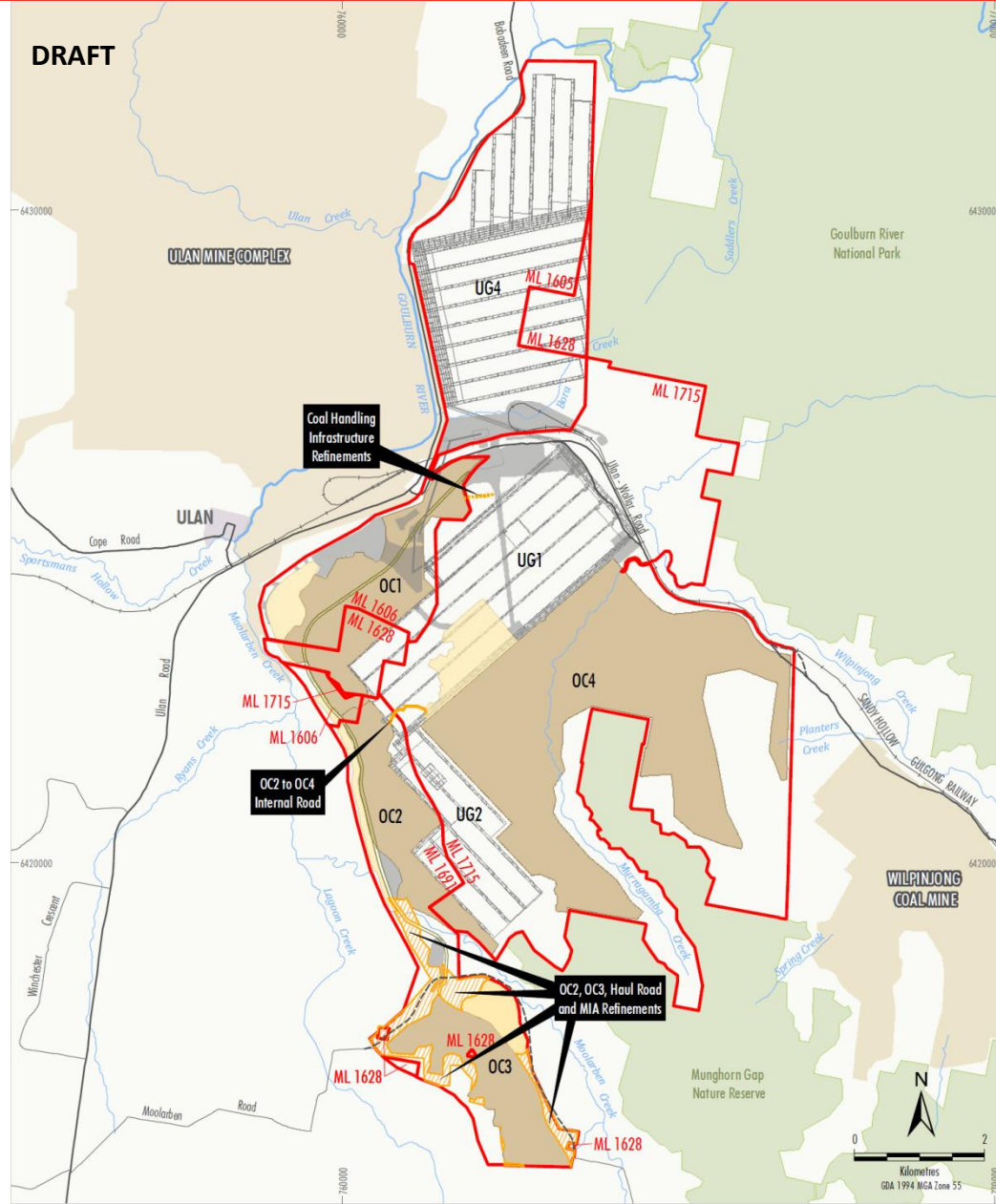
Open Cut Optimisation Modification

Modification Overview – Update

■ Scope of Environmental Assessment:

- Biodiversity Assessment.
- Aboriginal Cultural Heritage Assessment.
- Noise Assessment.
- Air Quality Assessment.
- Groundwater Assessment.
- Surface Water Assessment and Site Water Balance Review.
- Controlled Release Impact Assessment.
- Aquatic Ecology Assessment
- Visual Assessment
- Geochemistry Review.
- Geotechnical Review.
- Historical Heritage Review.
- Agricultural Resources Review.
- Rehabilitation Strategy Review.

Open Cut Optimisation Modification



Emergency Services Update

- 6 Emergency Response Team (ERT) members onsite each shift, available to attend emergencies in the local area.
- ERT members are trained to Cert III Surface Rescue Operations which includes
 - Mines rescue techniques and procedures
 - Operating open circuit breathing apparatus
 - Fire team operations/fight or contain external fires
 - Confined space rescue
 - Road crash rescue
 - Vertical rescue
- Moolarben ERT attend incidents on and off site.



Emergency Services Update

- Coal Services developing site. Planned to be operational by November.
- MCO continues to work with MWRC and RFS to provide land lease for RFS shed and training area.
- Developing a recruitment drive in conjunction with RFS.



LifeSkills Partnership

- Program developed in conjunction with Moolarben, Lifeskills and Skillset Workforce
- 3 new starters with a range of disabilities
- Working with Open Cut Maintenance
- Support worker assistance.
- Positive impact.
- Continued support of raffles



Employment update

- **Traineeships**
 - Currently 5 Underground and 16 Open Cut
 - Next round November
 - Underground x 5
 - Opencut x 8
- **Apprentices**
 - Currently 4 Underground and 16 Open Cut
 - Next round January 2018
 - Underground x 2
 - Opencut x 4
- **Underground and Open-cut recruitment on-going.**





Community
Consultative
Committee Update

THANK YOU

March 2017

2016 Annual Review

June 2017



Agenda

- **Licences and Approvals**
- **Activities During the Reporting Period**
- **Environmental Performance**
- **Water Management**
- **Rehabilitation**
- **Community**
- **Activities During the Next Reporting Period**

Licences and Approvals

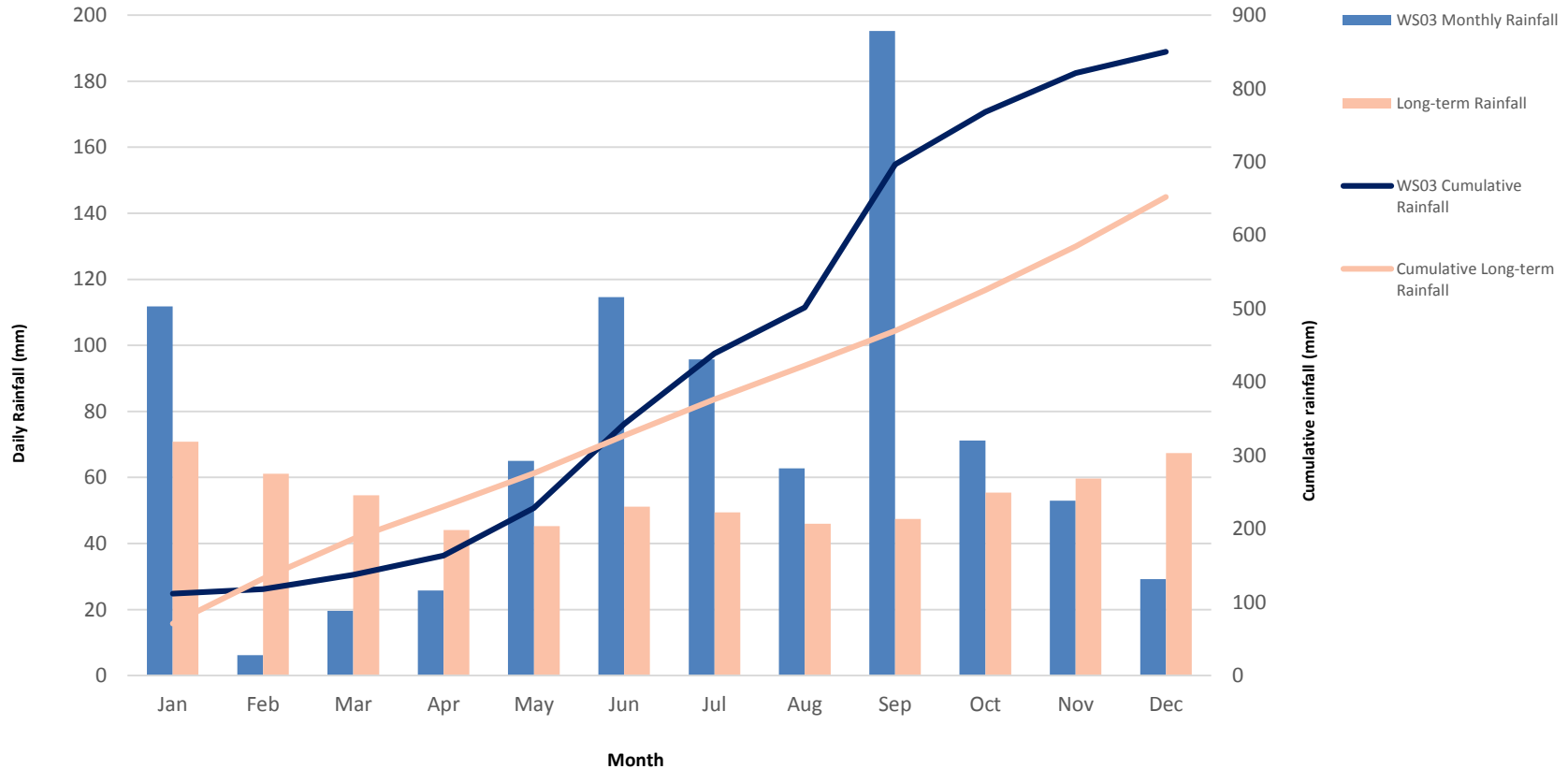
- **Project Approvals**
 - UG1 Optimisation (Stg 1 Mod 2 & Stg 1 Mod 12)
 - Application submitted for temporary wash limit increase.
- **Mining Operations Plan**
 - MOP amendments (UG1 Optimisation and UG4 Drilling)
 - MOP replacement approved for period to December 2018
- **Environmental Protection Licence – Varied**
 - Variation to include extra effluent irrigation, monitor relocation and administrative updates

Activities During the Reporting Period

- **Land Preparation**
 - 187ha disturbed
 - 10Ha prepared for rehabilitation and 26ha seeded.
- **Mining Operations** - Open Cut 1, 2 & 4 and UG1
- **Coal Transport** - 9.35Mt of total saleable product coal
- **Exploration** - 14 holes primarily focusing on OC4 within ML1715 and OC3 within ML1691
- **Open Cut Expansion** - Materials handling, coal processing and MIA area
- **Underground Project** – Coal handling, by-pass conveyor, MIA offices and RSIA

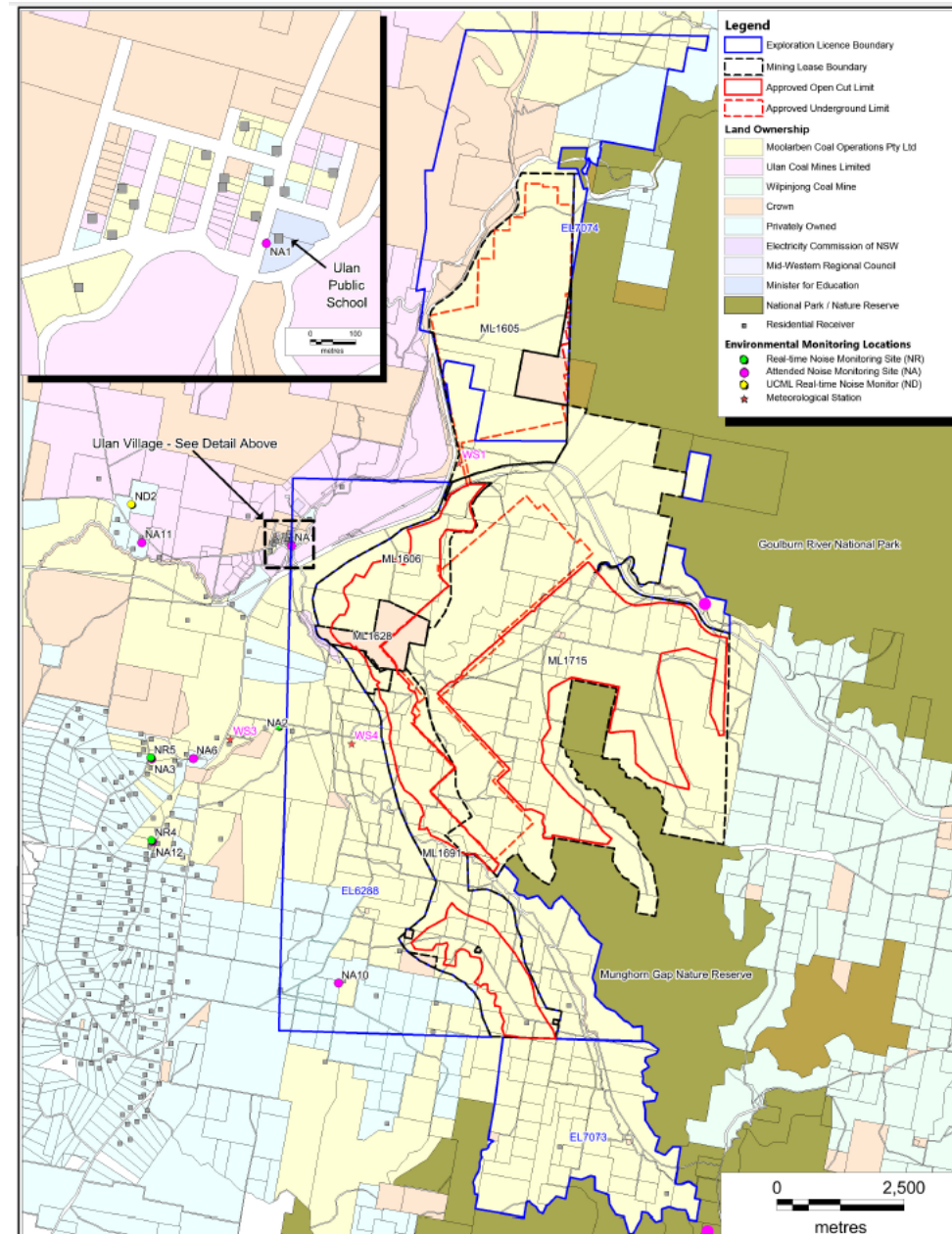
Environmental Performance – Rainfall

Weather Monitoring - Rainfall
January - December 2016



Environmental Performance – Noise and Blast

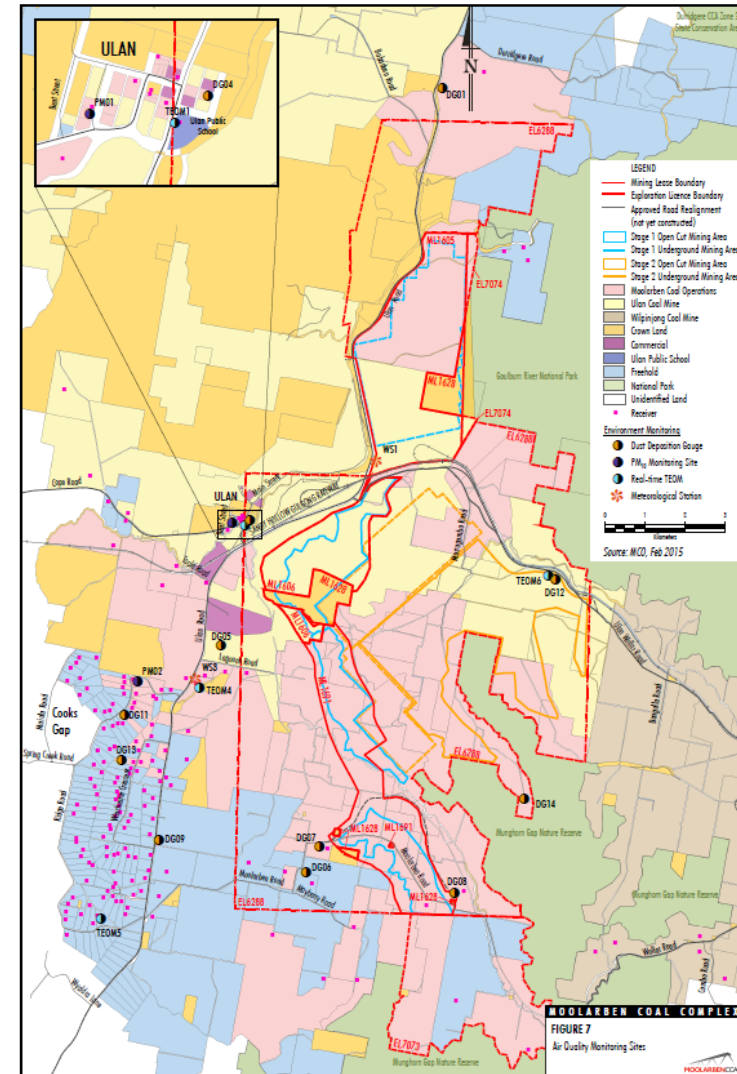
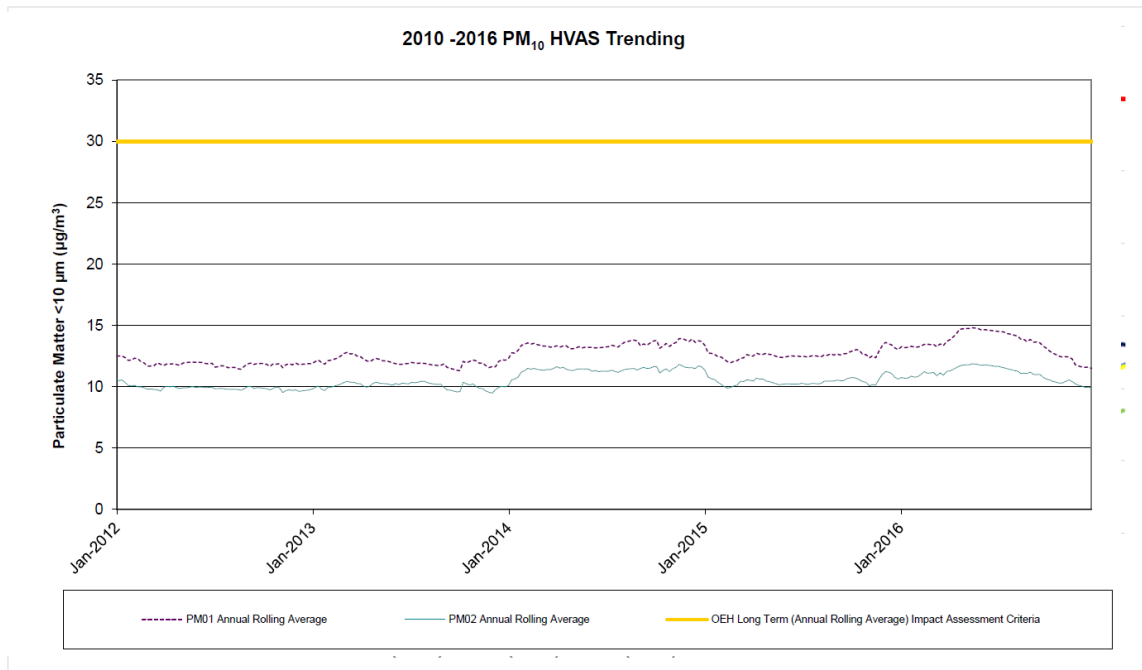
- **Noise**
 - Real-time and monthly and quarterly attended noise monitoring
 - No exceedance of criteria
 - Additional Dura Trays purchased
- **Vibration and Overpressure**
 - All below criteria
- **Fume**
 - One reportable fume event. Fume did not leave site



Environmental Performance – Air Quality

■ Particulate Matter (PM10)

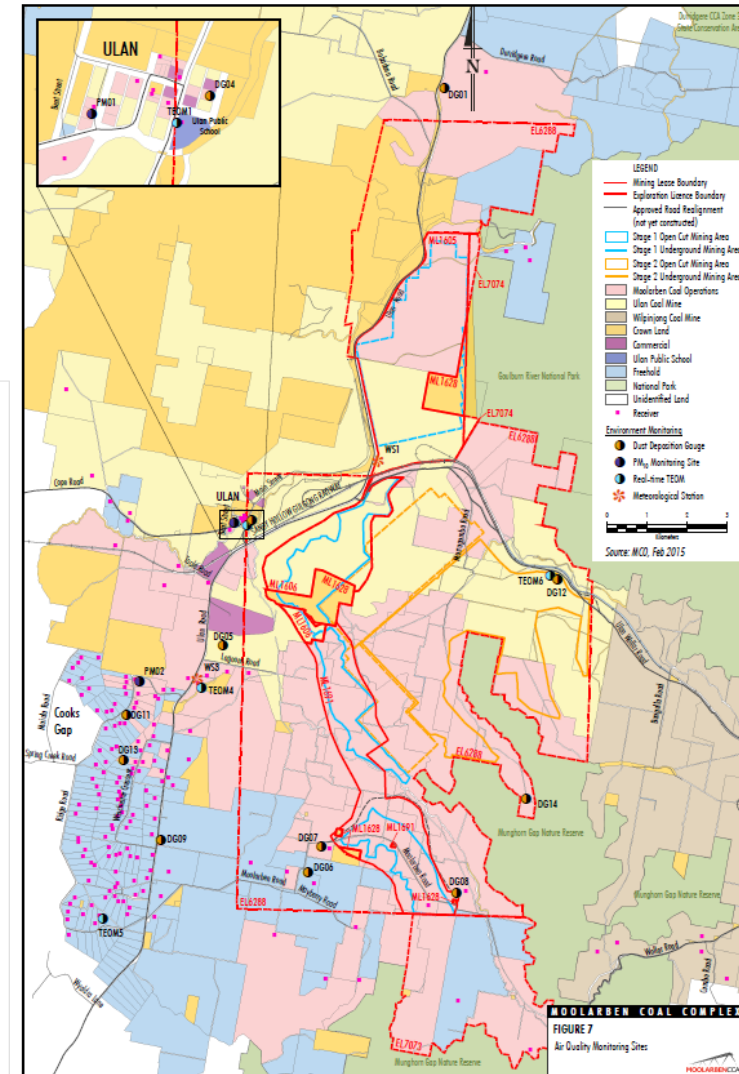
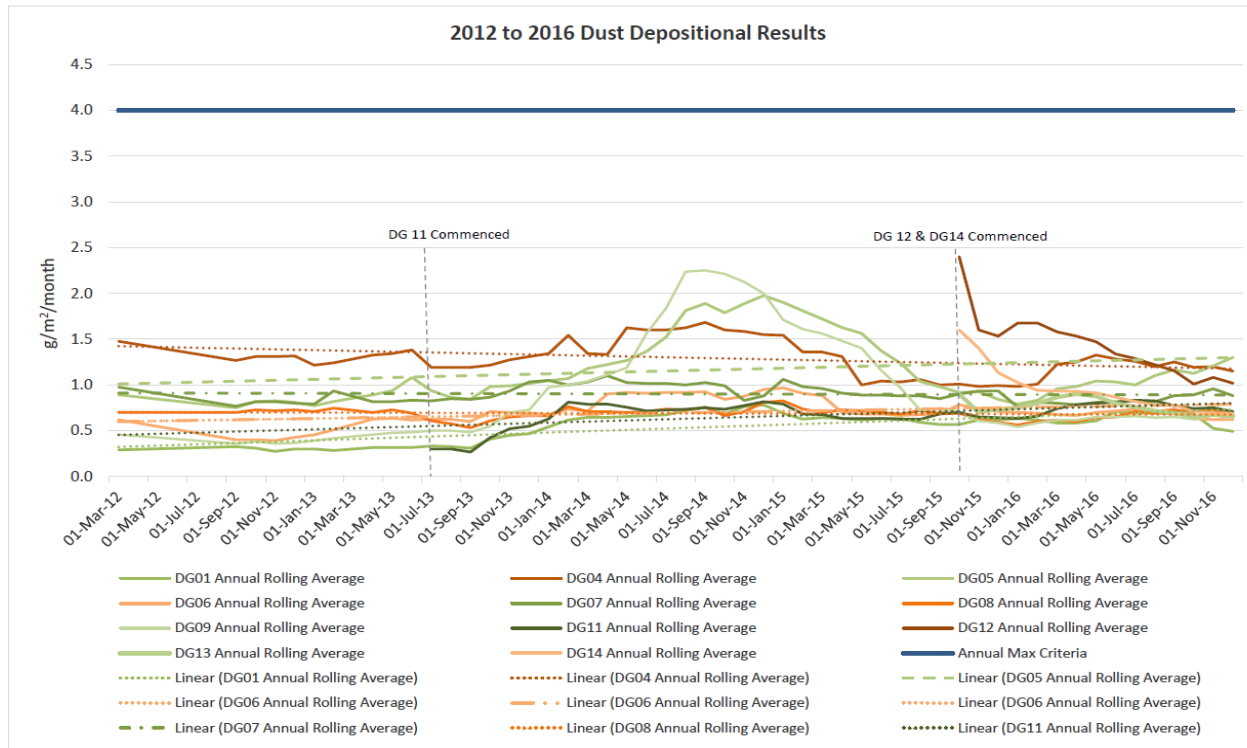
- TEOMs x 4 – Continuous and HVAS x 2 – Every 6 Days
- Average PM10 below $30\mu\text{g}/\text{m}^3$ criteria.
- 2 daily results above $50\mu\text{g}/\text{m}^3$ criteria. Both due to hazard reduction burns in Goulburn River National Park



Environmental Performance – Air Quality

■ Dust Deposition

- Eleven monitoring locations
- All results below criteria



Environmental Performance – Flora and Fauna

■ Offset

- Stage 1 Offset monitoring included:
 - Full floristic surveys (72 sites in autumn, 48 sites in spring)
 - Rapid assessments (24 sites in spring)
 - Fauna surveys (16 sites in spring) targeting diurnal and nocturnal birds, reptiles, amphibians, mammals, microbats and habitat
- EPBC (2013/6929) Offset baseline Monitoring
 - Vegetation validation, full floristic survey, fauna surveys and natural regeneration monitoring.



■ Results

- Native species richness increased between spring 2015 and spring 2016 at majority of sites. Seven sites recorded the highest or equal highest native species diversity.
- Vulnerable and threatened species continue to utilise the offsets.

■ Weeds and Feral Animals

- Control works undertaken throughout site and offsets.
- Feral animal programs with neighbours and LLS
- Weed treatment continued.



Environmental Performance – Heritage

- Continued management of Aboriginal heritage sites associated with the Stage 2 project.
- Survey completed during 2016 of the Powers Conservation Area.
- Historical heritage site 19 (Glen Moor Homestead) came into the care and control of MCO. The site will be subject to a revised heritage assessment in accordance with the HMP.



Surface Water

■ Surface Water

- Water quality generally consistent with the historical range
- No discharges occurred

■ Stream Health

- Taxa richness declined steadily at all sites between 2012 and autumn 2016, but increased in spring 2016.
- RCE and Signal2 scores have remained relatively consistent

■ Channel Stability

- Channel stability variable within each creek.
 - Active erosion predominantly the result of natural influences exacerbated by past land use.
- Negligible impact due to mining operations



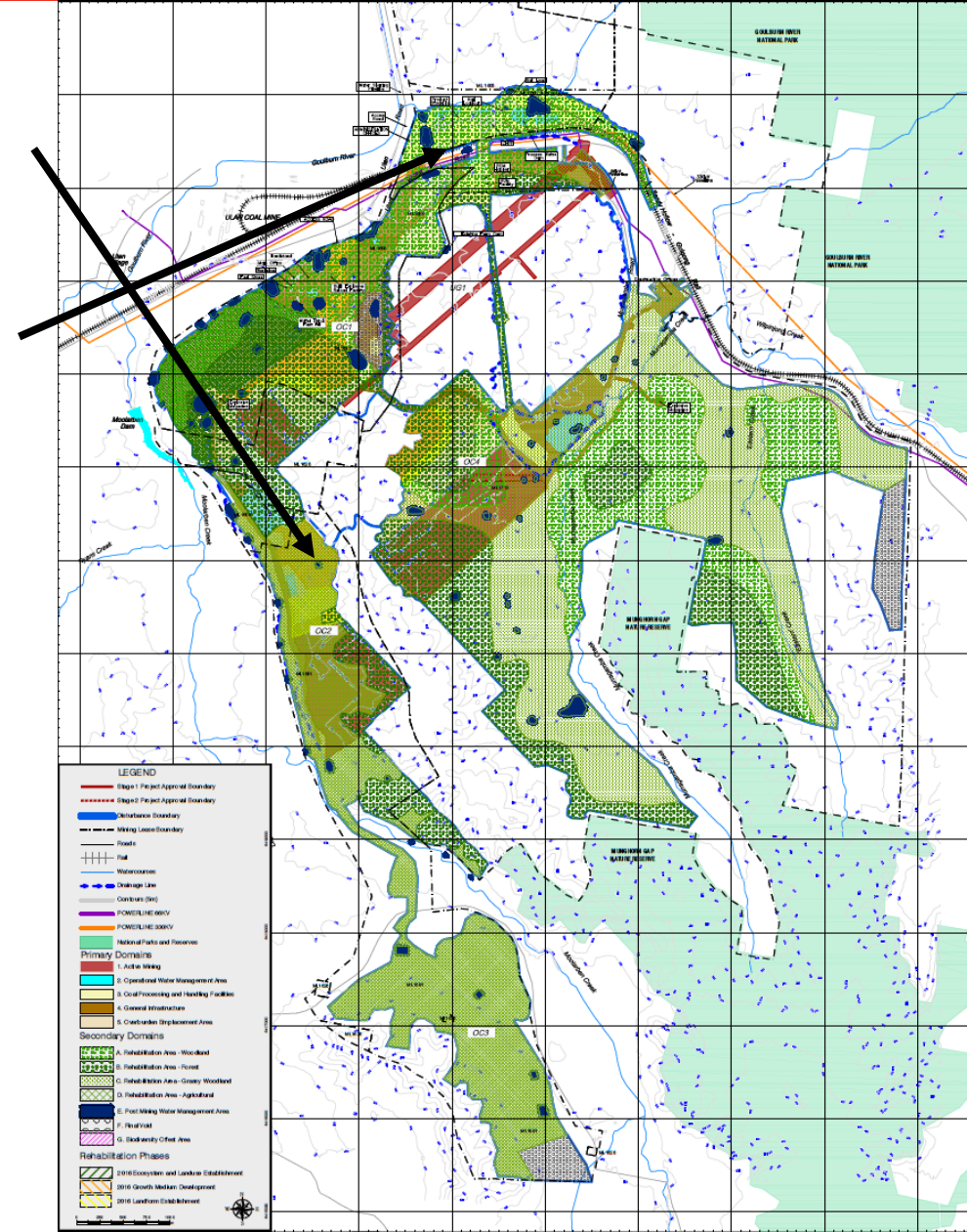
Groundwater

- A regional reduction in standing water levels observed in Permian overburden and the Ulan seam, consistent with the mining of the Ulan seam at MCO and adjacent operations. UG1 influence evident.
- Groundwater results were generally consistent with the historical range.
- Groundwater piezometer levels generally within range. One piezometer triggered investigation which is on-going.
- No impact associated with the MCC occurred on private groundwater users.



Rehabilitation

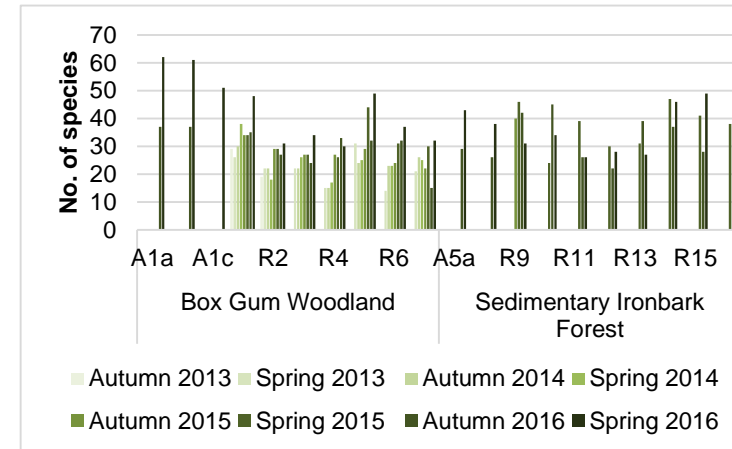
- **Rehabilitation undertaken**
 - 26ha Agricultural
- **Temporary Rehabilitation**
 - Progressive rehab of Underground construction areas



Rehabilitation Monitoring

Flora Monitoring - Autumn 2016 and Spring 2016

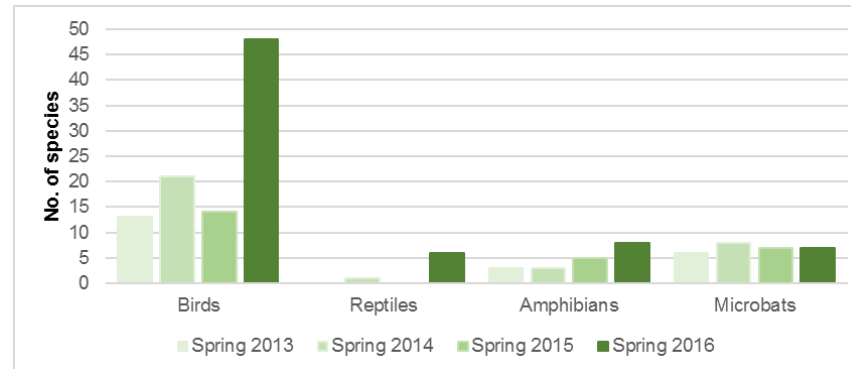
- **LFA**
 - The average Landscape organisation (LO) across all rehabilitation sites was 0.8. This contrasts to an LO range of 0.834 to 0.996 for analogue sites
 - Relatively high litter cover in 2016, primarily consisting of Acacia pods and flowering debris within rehabilitation sites.
- **Vegetation Dynamics**
 - The majority of sites continuing to develop towards shrubby Box – Gum, Box – Ironbark, or Grey Gum dominated woodland/forest.
- **Floristic Monitoring**
 - Increase in native species richness recorded at the majority of Box Gum Woodland rehabilitation sites
 - Spring native and exotic species richness has increased or remained consistent



Rehabilitation Monitoring

■ Fauna

- A total of 69 fauna species were recorded during spring 2016.
- Birds most diverse fauna group.
- Two threatened species *Miniopterus schreibersii oceanensis* (Eastern Bentwing-bat) and *Saccolaimus flaviventris* (Yellow-bellied Sheathtail Bat), were recorded during spring 2016.
- The presence of obligate woodland bird species such as honeyeaters, and a higher species richness, indicates that sections of the rehabilitation are maturing and are more advanced in their transition toward functioning woodland ecosystems.



Rehabilitation Monitoring

- Overall rehabilitation performance improved from 2015 to 2016.



■ Complaints

- 167 direct complaints from 30 residents
- Decrease from the previous reporting period
- 55% of complaints were received from 4 complainants
- Noise the primary issue of concern

■ Engagement

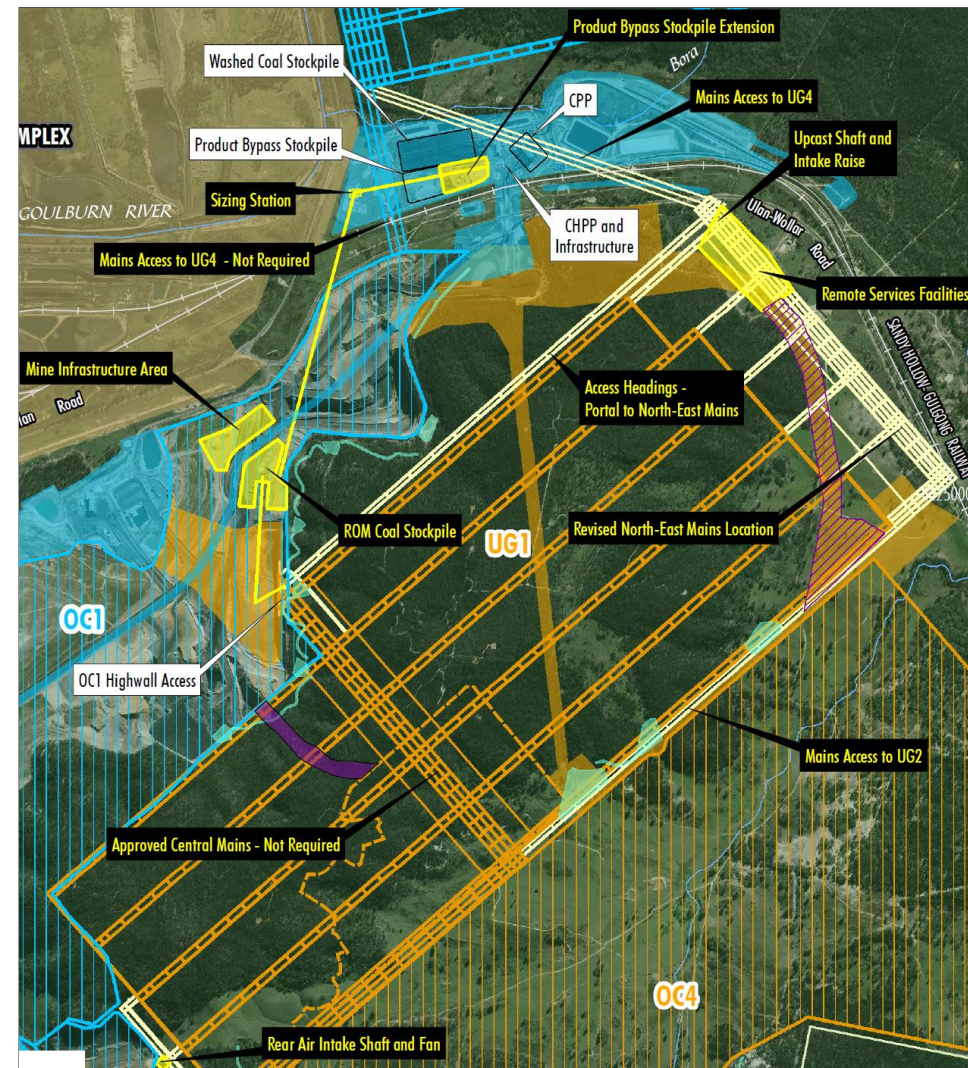
- Tours of the site by CCC, schools, local aged care facility;
 - Moolarben Spirit Awards Program;
 - Vocational student placement from Wollongong University;
 - Mid-Western District High Schools 'Try-A-Trade'
 - Dubbo Clontarf visit;
 - Moolarben Coal Celebrity Golf Classic;
 - Emergency Response Training assistance to the RFS including use of training facilities;
 - Careers information night for 2017 apprentices;
 - Direct Engagement
- \$109,900 of donations and sponsorships across 40 local groups and organisations



Activities Proposed

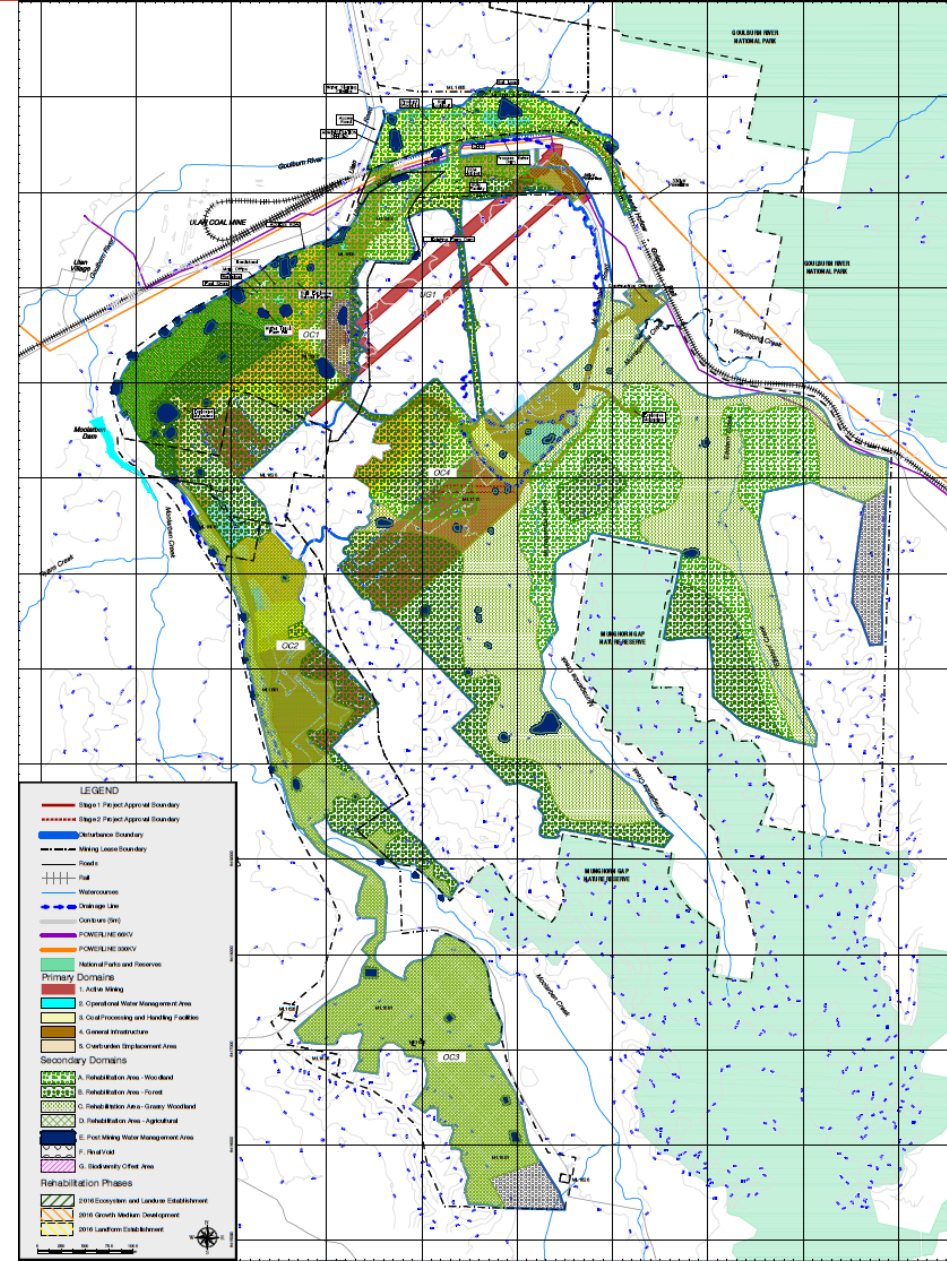
Underground Project

- Coal handling facilities
 - Complete the CHPP civil earthworks and rehabilitation
 - Commission the overland conveyor
- UG infrastructure
 - Construct MIA workshop, store and other infrastructure
 - Construct RSIA
 - Installation and commissioning of Longwall mining system



Activities Proposed

- Resource definition
- Overburden and coal extraction
OC1, OC2 and OC4
- UG1 first workings development
- Commencement of UG1 longwall
- Temporary rehabilitation
 - UG1 project areas
- Progressive rehabilitation
 - OC1, OC2 and OC4.



Questions??



13 June 2017

