



SITE: 12 Ulan-Wollar Road, Ulan NSW 2850  
POSTAL: Locked Bag 2003, Mudgee NSW 2850  
PHONE: +61 2 6376 1500  
WEBSITE: www.moolarbencoal.com.au  
ABN 59 077 999 569

MOOLARBEN COAL OPERATIONS - COMMUNITY CONSULTATIVE COMMITTEE  
MEETING No. 53

**Date:** Tuesday 2nd June 2020  
**Time:** 4:05pm  
**Location:** Via Video and Teleconference  
**Attendance:** Independent Chairperson  
Lisa Andrews (LA)

Community Members

Julia Imrie (JI)  
Bev Smiles (BS)  
Aleisha Lonsdale (AL)

Moolarben Coal Operations

Graham Chase (GC)  
Steve Archinal (SA)  
Trent Cini (TC)  
Mathew Croake (MC) *{Minute taker}*

Apologies

Andrew Palmer (AP)  
Helen Ungaro (HU)  
David Stokes (DS)  
Cr Des Kennedy (DK)  
Cr John O'Neil (JO)

***A copy of the Agenda and Meeting 53 Presentation was provided to all meeting attendees.***

## **1. Introduction and Welcome**

Lisa Andrews (LA) opened the meeting and welcomed all attendees to the Moolarben Coal Operations (MCO) CCC.

## **2. Apologies**

Andrew Palmer (AP)  
Helen Ungaro (HU)  
David Stokes (DS)  
Cr Des Kennedy (DK)  
Cr John O'Neil (JO)

## **3. Business Arising from Previous Finalised Minutes**

There was no business arising from Meeting 52.

No actions from CCC Meeting 52.

### **Correspondence**

Correspondence to the CCC since meeting 52 included the following:

- 25/3/20 – Draft minutes sent to CCC members for review.
- 3/4/20 - Email from JI requesting more detailed information on the questions raised and submitted prior to the March CCC.
- 3/4/20 – Finalised minutes sent to CCC members.
- 15/4/20 – Email to JI with further details to the questions raised.
- 21/4/20 – Email from MCO with its COVID 19 update. Forwarded on to members the same day.
- 16/5/20 – Email from MCO regarding the Water Treatment Plant, which was forwarded on to CCC members.
- 16/5/20 – Email from JI requesting data following the first week of discharge.
- 25/5/20 – Email to members with the Meeting Notice & Agenda for this meeting with Correspondence Report.

### **CCC Update Presentation**

GC provided an update on the COVID-19 management actions completed by MCO.

GC provided an update on the Community Support program (CSP) including events and initiatives supported by MCO, along with upcoming events MCO are also supporting. LA advised she had received a Mid Western Regional Council (MWRC) brochure via email regarding the Respiratory and Fever Clinic in Mudgee and will distribute to the CCC. BS asked about the MCO CCC involvement in the CSP approval process. GC explained that MCO currently has a CSP committee that meets to determine successful applicants. JI asked who was on the current committee. GC confirmed representatives from the community, MWRC and a number of MCO departments are currently on the CSP committee.

TC provided an operational update. JI asked if current release volume will be 10 Megalitres per day (ML/day). TC confirmed MCO will generally be releasing up to 10 ML/day. JI asked if 10ML/day is the upper limit. GC confirmed MCO's release limit is currently 10ML/day and 15ML/day during UG4 mining operations, or as approved by the EPA in the event of prolonged wet weather. JI asked if MCO is currently having issues with the amount of water on site. GC confirmed MCO water stocks are high and being managed across MCO.

BS asked where the current spontaneous combustion is located. GC confirmed the spontaneous combustion is in the Open Cut 2 pit, similarly to areas previous discussed at preceding CCC meetings.

Jl enquired if hydrochemistry sampling is completed for release water. GC confirmed water sampling is undertaken consistent with the approved management plan and MCO's Environmental Protection Licence. Water quality data associated with water released from MCO under the Environmental Protection Licence will be included as part of the monthly monitoring data on MCO's website.

BS asked MCO to confirm the water treatment plant is operating. GC confirmed water treatment plant started releasing water on the 18<sup>th</sup> of May 2020. BS asked if the brine water make is similar to what was predicted and how is the brine water being managed. GC confirmed the brine water make is generally consistent with predications and MCO is managing brine water through temporary onsite storage and water cart usage.

TC provided an exploration update.

TC provided an update on environmental monitoring including water quality, air quality, noise and complaints. General discussion of water quality and level monitoring results, operations and climatic conditions. BS asked about the first flush affects at SW5 and SW12. TC explained the surface water monitoring points are spread across the Moolarben / Ulan region. Each point will react differently to weather events. General discussion of contributing factors that may affect the water quality results at SW5 and SW12, such as no-flow conditions, upstream dams and first flush. Jl commented that the pH level of 3 measured at SW12 in February were unprecedented and historically the lowest acidity level recorded that she was aware of, including pre-mining Dept. Water Resources data.

Jl enquired about access to the Goulburn River National Park (GRNP) and why this would prevent MCO collecting required monthly water monitoring samples as per EPA Licence TC confirmed MCO has been in contact with the National Park & Wildlife Service (NPWS) with Bushfires and COVID-19 resulting in access restrictions. Jl expressed her concern on the 3 month gap in downstream river monitoring data and that MCO ensures consistent sampling in the GRNP considering the discharge of mine water. *[MCO noted that no water releases occurred from Moolarben during the two months when NPWS Park closures prevented all downstream water sampling.]*

BS enquired if MCO has lost production time due to noise. TC confirmed MCO change operations when required to maintain compliance with noise levels. GC advised that MCO considers potential noise impacts through both the planning and operational phases, and that operational changes due to noise management are not published. GC also advised that there are no material changes in noise impacts with operating in Open Cut 3.

BS asked if noise complaints are associated to a particular pit. TC explained that noise complaints are generally not a result of a particular pit at MCO. BS asked how long MCO have been operating in Open Cut 3. SA confirmed construction started in January 2020 with mining operations ongoing for approximately the last six weeks.

Jl mentioned blasts have been more noticeable recently at her dwelling. Jl also confirmed she has recorded times and dates of blasts she has noticed. Jl will contact MCO if effects increase. BS enquired about the number of blasts at MCO across all pits. GC confirmed MCO complete approximately three to four blasts a week on average depending operational requirements.

BS asked if MCO are repairing rehabilitation after the drought. TC confirmed MCO continues to maintain areas of rehabilitation including the newly seeded areas most impacted by drought. BS asked how MCO manages the Biodiversity Offset Area's at Hargraves. TC confirmed MCO manages all their Biodiversity Offset Area's in a consistent way in accordance with management plans. BS asked if MCO are required to do a species assessment on their Biodiversity Offset Area's. TC advised MCO undertake Biodiversity Offset Monitoring twice a year.

Jl asked about erosion on the Bobadeen Biodiversity Offset Area after the storms earlier in 2020. TC advised that MCO are aware of erosion events including associated with old farm dams in the area. Jl noted her concern about the stability of Bobadeen Creek on the Offset property (adjacent to Ulan Road) and the need for rehabilitation of the stream banks to prevent further erosion during storm events.

GC provided an employment update. BS asked how many of the MCO's current trainees or apprentices will receive a position at MCO upon completion of their training. GC explained that positions available are dependent on operational needs at the time of completion. GC also noted that it is in the best interest of MCO to employ trainees and apprentices after their training has been completed.

GC provided update on the UG4 Ancillary Works Modification

#### 4. General Business

BS wished to advise the CCC that she has fielded concerns from land holders downstream of MCO on the Goulburn River regarding an increase in the water level of the Goulburn River due to water releases. GC advised MCO would be happy for affected landholders to contact MCO.

Jl asked for an update on the current water make from UG1. GC confirmed current water make from UG1 is approximately 75lps including water supply, inflows and recirculation.

Jl asked for an update on the status of the 2019 Annual Review. GC explained the 2019 Annual Review is currently with the Department of Planning and Environment (DPIE) and the Resources Regulator for approval. Jl requested the CCC be provided a draft copy of the 2019 Annual Review as Ulan mine had provided, and now almost 6 months since the end of the 2019 reporting period. GC advised that the Annual Review would be published following approval. Jl asked who from the department is required to approve it? GC explained that all documents for regulator approval are no longer submitted to an individual but through the DPIE Portal or Service-desk. LA confirmed she has already contacted the DPIE for an update.

#### 5. Next Meeting: 15<sup>th</sup> of September 2020 at 4:00pm

*Meeting Closed at 5:10pm.*

#### Action Items:

| Item | Action   | Responsibility |
|------|--|----------------|
| 1    | LA to send MWRC brochure to CCC members  | LA             |
| 2    | LA to formalise a request for an update from departments regarding the 2019 AR | LA             |



# Community Consultative Committee Update

June 2020

Environment & Community Dept  
Moolarben Coal Operations



# COVID – 19 Update

- Proactively managing the situation to safeguard the health and safety of our people.
- No confirmed COVID-19 Cases.
- Yancoal continues to monitor the situation and health advice
- Screening of people attending site (Thermal Cameras)
- Implementation of social distancing
- Reinforcement of improved hygiene practices
- Enhanced Cleaning
- Community support focused on COVID response and health.

# Community Support Program (CSP)

- MCO have been actively engaging with 2020 CSP recipients during COVID-19 restrictions.
- CSP events or initiatives completed since last CCC meeting.
  - Safety eyewear donation to Mudgee & Gulgong Hospitals
  - Gulgong Scarecrow Scroll
  - WWII Memorial Plaque Restoration
  - Defibrillator and Personal Protective Equipment donated to the Fever & Respiratory Clinic
  - Face masks to LifeSkills Plus



# Community Support Program (CSP)

## Upcoming Community Support Events & Initiatives

- Children's Playground replacement at Mudgee Community Pre-School
- New flooring for the Kids & Carers House in Kandos
- New Crash Cart for Gulgong Hospital

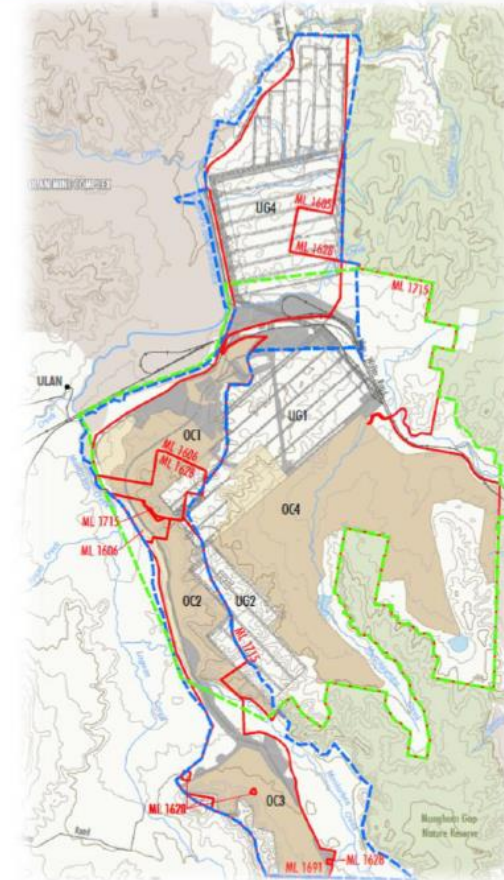


Applications for the 2020 Community Support Program are closed. Applications for the 2021 Community Support Program will be open in **September 2020**.



# Operational Update

- Operations continue in OC2, OC3 & OC4.
- Longwall LW103 extraction complete.
- UG development continues.
- Commissioning of Water Treatment Plant and construction of water storages ongoing.
- Water release commenced
- MCO continue to revising EMPs and UG1 Extraction Plan.
- Remediation of heating within overburden areas.
- Progression of internal and paper road closures



# Exploration Update

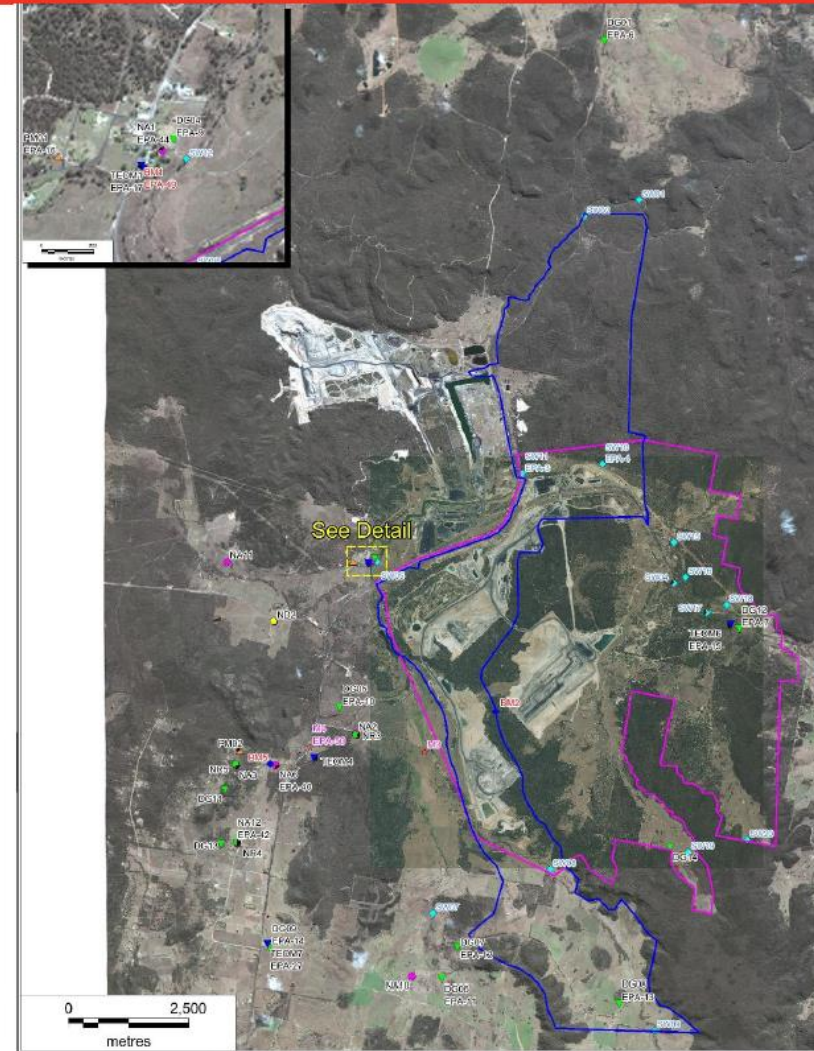
- No current exploration works.
- Exploration site rehabilitation and relinquishment continues.
- Rehabilitation and monitoring activities have continued during the period.



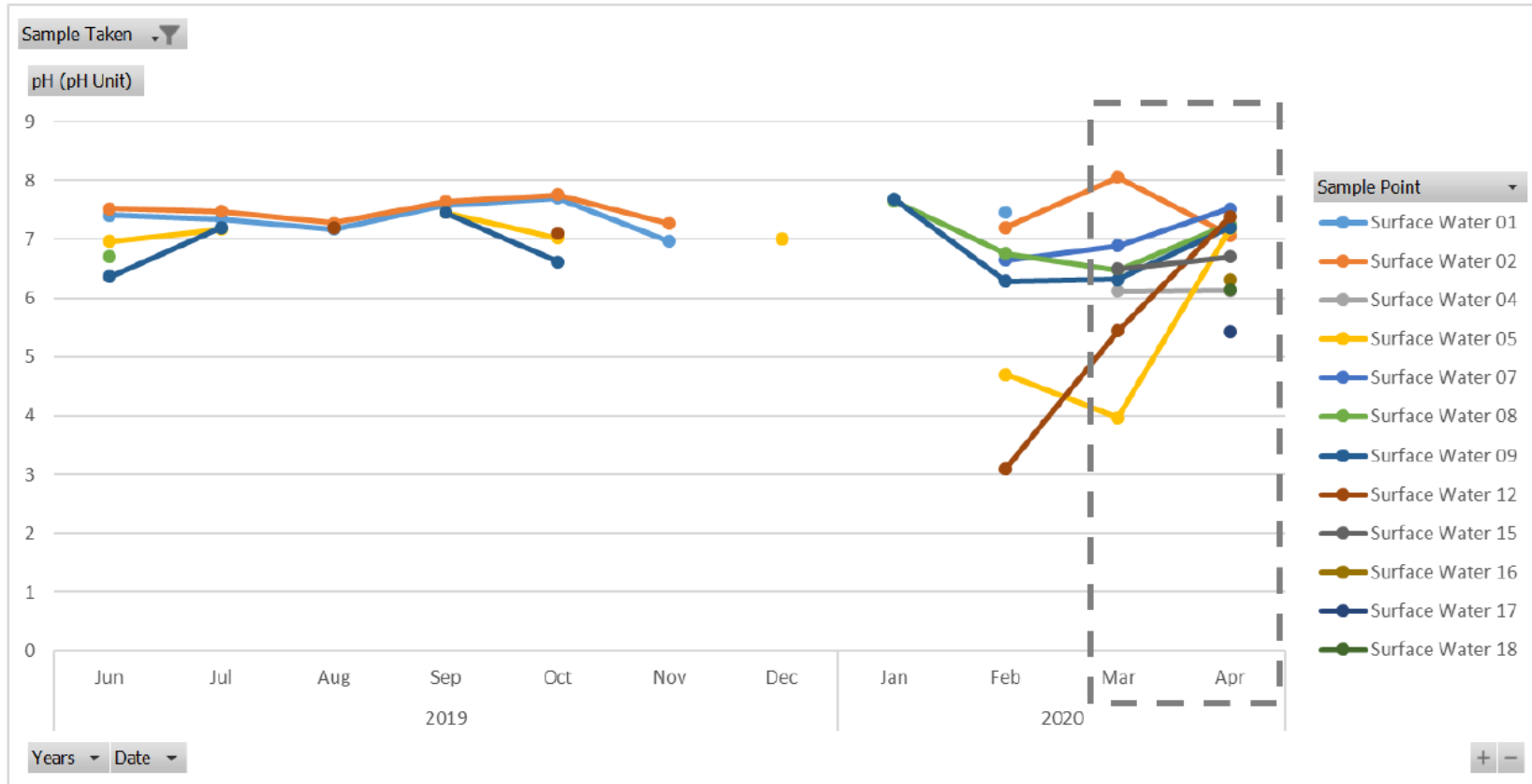
# Environmental Monitoring

## Monitoring network

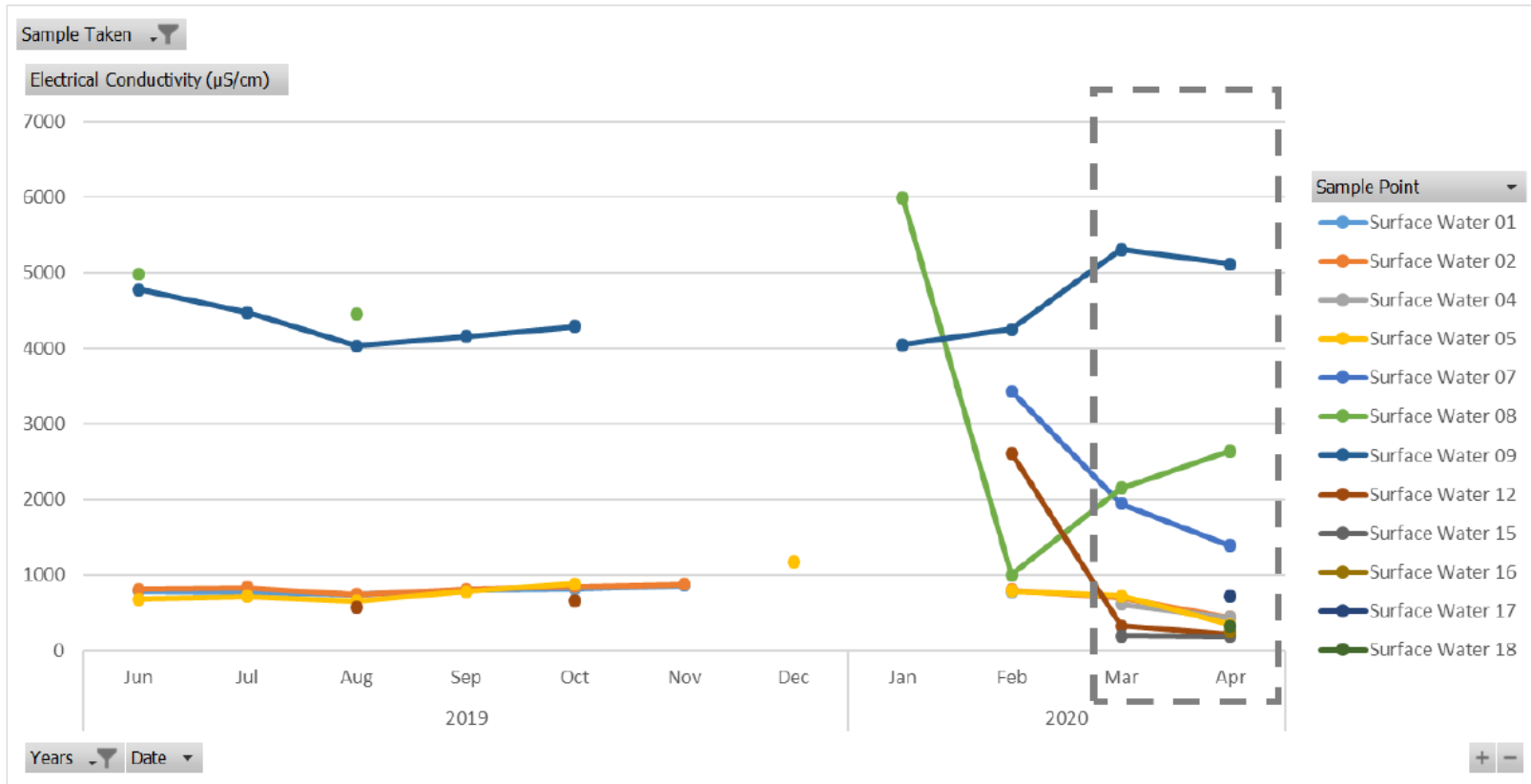
- Water;
- Air Quality;
- Blasting;
- Noise;
- Meteorology.



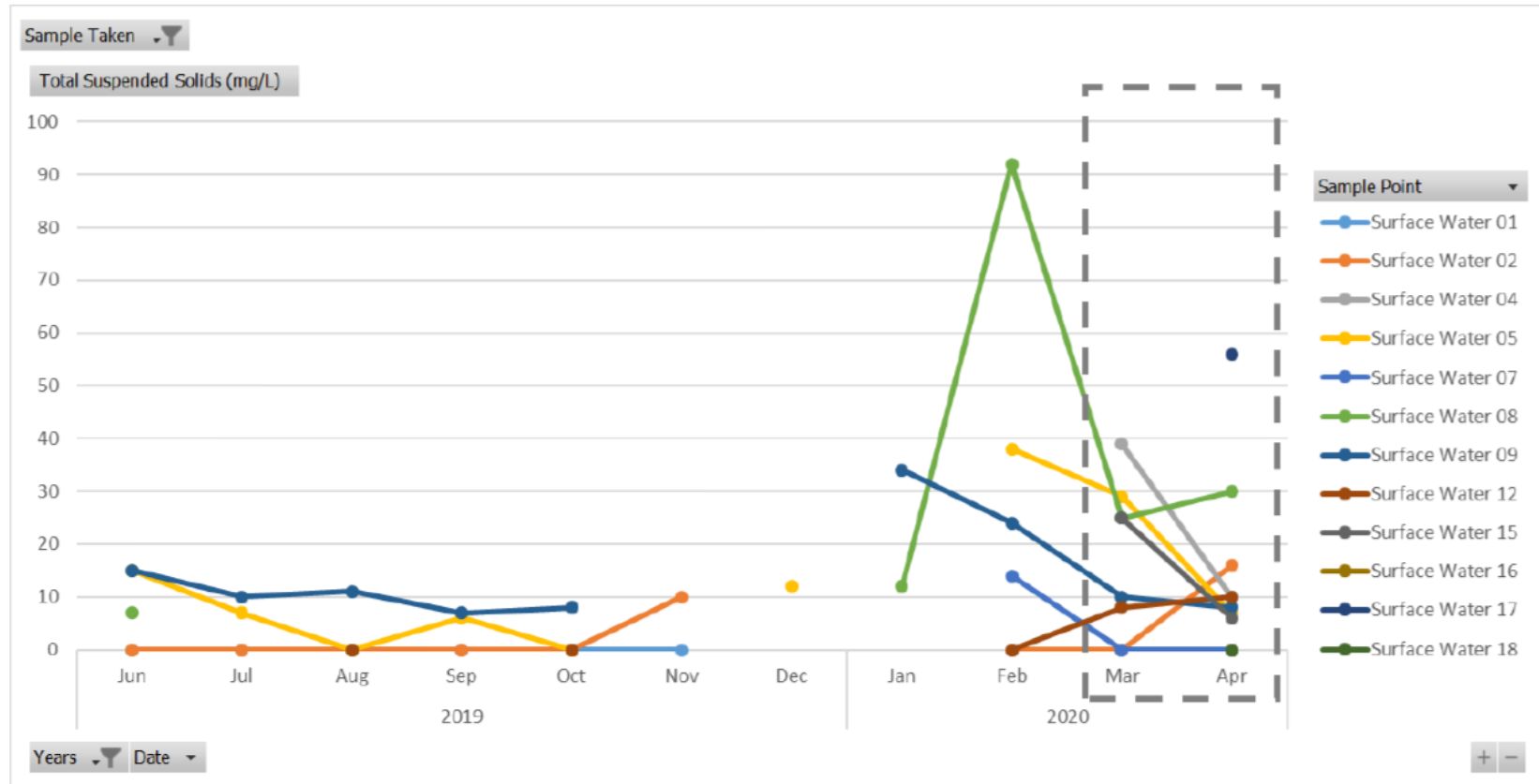
# Water Quality - pH



# Water Quality - EC



# Water Quality - TSS



# Air Quality

| Site    | April 2019 PM10 Annual Average ( $\mu\text{g}/\text{m}^3$ ) | April 2020 PM10 Annual Average ( $\mu\text{g}/\text{m}^3$ ) | Air Quality PM10 Annual Average Criteria ( $\mu\text{g}/\text{m}^3$ ) |
|---------|---|---|---|
| TEOM 01 | 15.43   | 17.27   | 25.0  |
| TEOM 07 | 16.30   | 14.58   | 25.0  |
| TEOM 04 | 19.01   | 18.30   | 25.0  |

| Site    | April 2019 PM2.5 Annual Average ( $\mu\text{g}/\text{m}^3$ ) | April 2020 PM2.5 Annual Average ( $\mu\text{g}/\text{m}^3$ ) | Air Quality PM2.5 Annual Average Criteria ( $\mu\text{g}/\text{m}^3$ ) |
|---------|--|--|--|
| TEOM 07 | N/A*   | 6.02   | 8.0  |

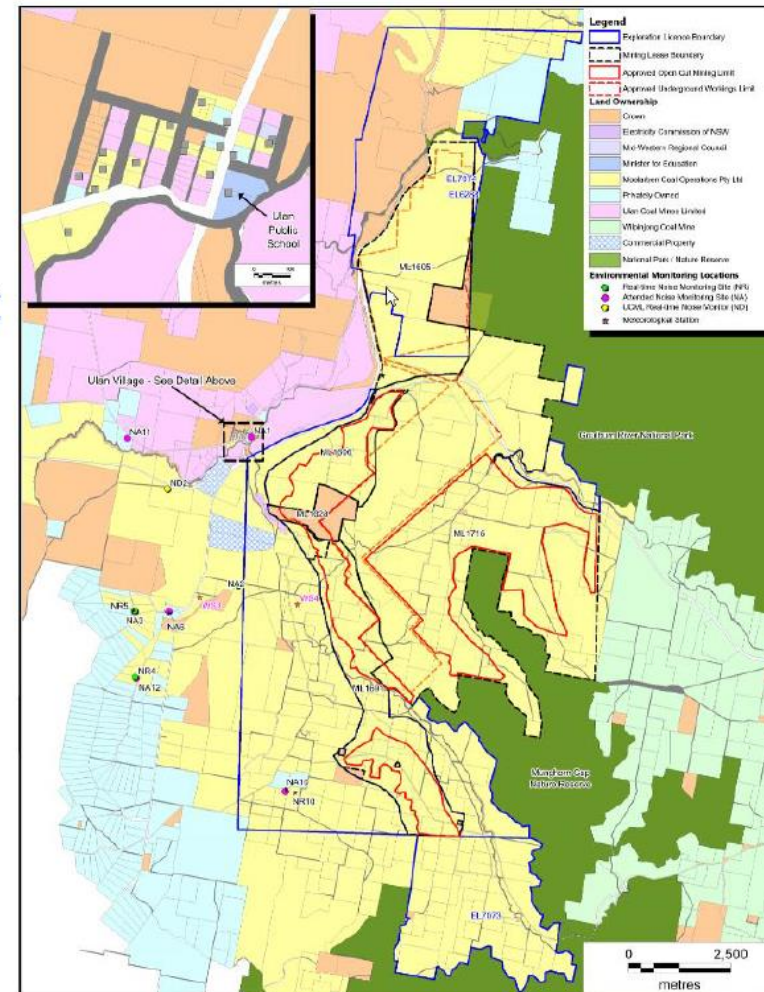
\*less than 12 months of data

Monthly monitoring reports are available on our website:

[www.moolarbencoal.com.au/environment-and-community/monitoring-results/](http://www.moolarbencoal.com.au/environment-and-community/monitoring-results/)

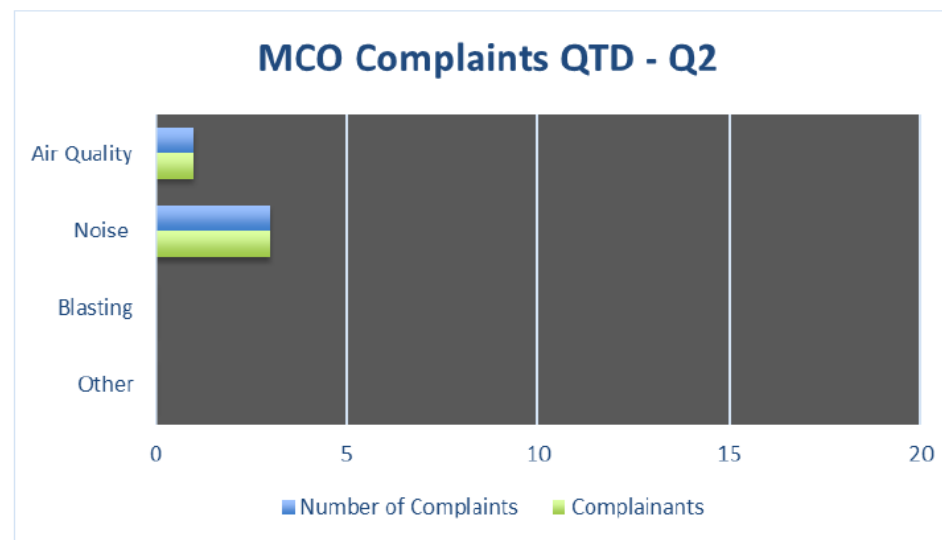
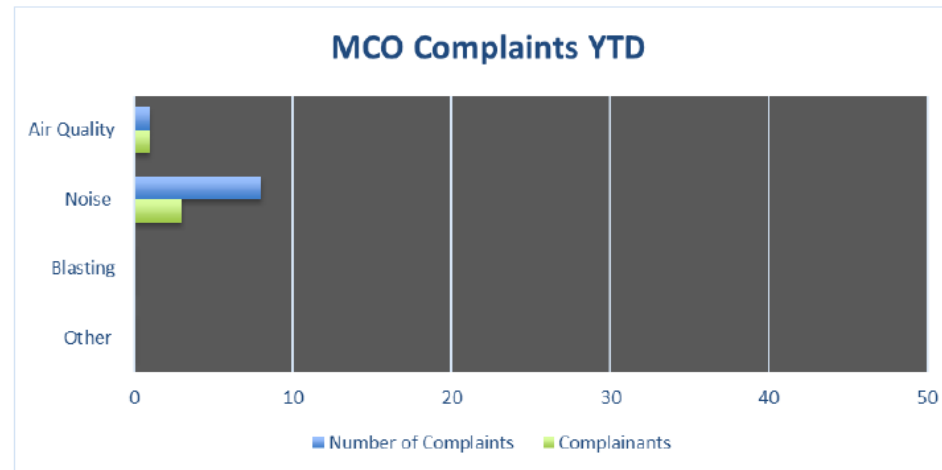
# Noise Monitoring

- All monthly & quarterly attended noise monitoring within criteria.
- Continued implementation of:
  - Planning controls - scheduling
  - Engineering controls - attenuation
  - Operational controls - bunds/screens
  - Real-time monitoring triggers
  - Real-time response protocols





# Community Complaints



# Rehabilitation Update

- Rehabilitation maintenance works are continuing.
- Rehabilitation monitoring in progress.



# Biodiversity Offset Management

- Biodiversity Offset 2020 planting works have commenced on the Bobadeen Offset.
- Autumn Biodiversity Offset monitoring is underway.
- Aerial Wild Dog baiting by the LLS has been completed. A winter Wild Dog ground baiting program will commence in June.



# Employment Update

## Traineeships

- Currently 7 Underground

## Apprentices

- Currently 7 Underground & 20 Open Cut

## General

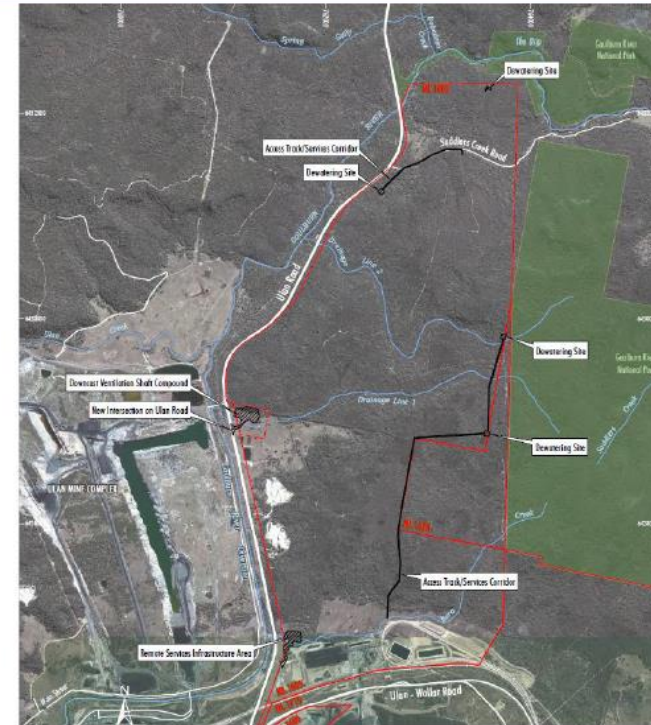
- Skillset Land Works – 3 Traineeships in Conservation Land Management commenced work in February 2020.



# UG4 Ancillary Works Modification

## Modification Overview

- Modification to Stage 1 Project Approval.
- Ancillary surface infrastructure for UG4.
- NSW DPIE undertaking assessment.
- Upgrade of Ulan Road - Saddlers Creek Road intersection included.
- EPBC referral submitted for Commonwealth Department of Agriculture Water and Environment.
- DAWE undertaking Action assessment.



UG4 Ancillary Works Modification  
Indicative Surface Infrastructure Area