

**MOOLARBEN COAL OPERATIONS - COMMUNITY CONSULTATIVE COMMITTEE
MEETING No. 58**

Date: Tuesday 7th September 2021
Time: 4:03 pm
Location: Via Video and Teleconference
Attendance: Independent Chairperson
Lisa Andrews (LA)

Community Members

Dr Julia Imrie (JI)
Bev Smiles (BS)
Aleshia Lonsdale (AL)
Mayor, Cr Des Kennedy (DK)
Helen Ungaro (HU) *{joined the meeting at 4:21pm}*

Moolarben Coal Operations

Steve Archinal (SA)
Trent Cini (TC)
Morgan Yeatman (MY)
Mat Croake (MC) *{Minute taker}*

Apologies

Cr John O'Neill (JO)
David Stokes (DS)
Chris Pilley (CP)

Guest

Graham Chase (GC) *{left the meeting at 4:10pm}*

Meeting 58 Agenda and Presentation and Meeting 57 Minutes were provided to all meeting attendees.

1. Introduction and Welcome

Lisa Andrews (LA) opened the meeting and welcomed all attendees to the Moolarben Coal Operations (MCO) Community Consultative Committee (CCC).

Graham Chase (GC) attended the CCC meeting to inform the CCC he has resigned from the position of E&C Manager at MCO and wished to thank the CCC for their contribution over the last few years. JI and DK responded with their appreciation for GC's efforts and participation in the MCO CCC meetings. LA thanked GC for connecting with the CCC to advise them personally of his resignation. LA acknowledged GC's professionalism and commitment in the consultation process during his time with MCO, wishing him well in his future endeavours.

2. Apologies

Cr John O'Neill (JO)

David Stokes (DS)

Chris Pilley (CP)

3. Business Arising from Previous Finalised Minutes

LA confirmed previous meeting minutes finalised and distributed on 25 June 2021.

LA and TC discussed previous actions items being:

- 1. Include current mining locations on a figure in future CCC presentations. Complete.*
- 2. Investigate whether the Goulburn River water level at Ringwood Road River crossing has been considered by the three mines when releasing respective maximum daily allowances. Complete.*

No further actions or business arising from CCC Meeting 57.

Correspondence

Correspondence to the CCC since meeting 57 included the following:

- 16/6/21 – Email to CCC members with information on the Moolarben Open Cut Extension EIS – Social impact Assessment & Newsletter.
- 19/6/21 – Draft minutes sent to CCC for review (comments received back & incorporated into minutes).
- 25/6/21 – Email with finalised minutes sent to CCC members.
- 18/8/21 – Email to members advising that the CCC will be held via video-conference, including the meeting agenda & correspondence
- 19/8/21 – Email from JI requesting information and data. This was forwarded to MCO for action and response.
- 1/9/21 – Email to members with meeting notice, agenda and Blue Jeans link to join this meeting.
- 6/9/21 – Email to members with presentation, agenda, and MCO response to action item 2 from meeting 57.
- 7/9/21 – Email to members with the reminder for this meeting and additional links for Action Item 2.

CCC Update Presentation

TC welcomed CCC members and provided an update on COVID-19 management actions.

TC provided an update on the Community Support Program (CSP). LA asked why the tree guards are engineered to be heavy duty. TC advised the purpose and design of the tree guards was to allow them to be moved and reused.

TC provided an operational update. TC addressed CCC members question requesting an update on the trigger level for PZ105C and an update on the UG4 Extraction Plan and associated groundwater monitoring. TC confirmed that as part of the UG4 extraction plan further consideration will be given to the groundwater monitoring network including locations and triggers and informed the CCC that the UG4 Extraction Plan is expected to be finalised in early 2022.

Jl asked for an update on the Independent Water Quality Study (IWQS). TC advised the IWQS is scheduled to be completed by the end of 2021 as per the Project Approval. Jl asked if new data was being collected for the IWQS. TC confirmed further monitoring data will be included. Jl stated that the mine water discharge would influence the IWQS. Jl asked if the IWQS consultants had visited the site and whether the current Covid-19 restrictions had limited access for the consultants completing the IWQS. TC advised that COVID constraints had not currently impacted the progress of the study.

Jl asked if MCO are using Australian Groundwater & Environment (AGE) as the UG4 Extraction Plan groundwater consultant. TC confirmed that AGE is the approved groundwater expert and will be completing the UG4 groundwater technical report which includes incorporating environmental monitoring, model review, and studies.

TC addressed CCC member question regarding current UG water-make, MCO is currently seeing approximately 130 litres per second from underground operations including inflows, MCO water supply and recirculation from the open cut operations. Jl noted this was ~11 ML/day

TC provided an exploration update. BS asked what MCO is finding from drilling in EL6288 Nth. TC advised that currently only one exploration site has been completed. BS requested the results from the drilling program in EL6288 Nth be discussed at the next meeting. **Action** – MCO to provide a general update on the EL6288 Nth drilling program.

MY provided an update on environmental monitoring. Jl commented the ANZECC water guidelines use micrograms per litre not milligrams per litre as used by MCO. TC confirmed the presentation reflects the approved Surface Water Management Plan (SWMP). Jl questioned the release limit for Aluminium as per graph. **Action** – MCO to confirm the limit of Aluminium for release water.

MY discussed the elevated electrical conductivity (EC) levels at SW05 and Moolarben Dam. Jl commented the spike in salinity is unusually high, and questioned possible upstream causes, the Moolarben Dam catchment hasn't changed apart from mining. TC confirmed that Moolarben Dam has been overflowing with elevated EC levels influencing results at SW05.

MY provided an update on complaints. TC noted the complaints 'other' category consists of lighting complaints.

MC provided a rehabilitation and offset management update. Jl advised she has observed wild pigs on Saddlers Creek Road adjacent to UG4. TC confirmed MCO will review their current feral animal control programs in the vicinity. **Action** – MCO to investigate their current feral animal control programs in the vicinity of Saddlers Creek.

TC provided information on the proposed Underground 2 Modification including a general overview of the modification and indicative project timing.

TC provided an update on the Open Cut Extension Projects. TC advised the CCC, the status of the Open Cut extension projects, and informed the members that the project will be split into two separate applications, with the OC3 extension project proceeding ahead of the OC4 project. BS asked if the OC3 extension project will be considered a Modification to the current Stage 1 Project Approval. TC confirm the Open Cut 3 extension project will be a new Environmental Impact Statement and Planning Application. BS asked how much coal is going to be extracted. SA advised the CCC the project is still in the scoping phase and that detail is not available.

TC provided an employment update.

LA called for any other questions from the CCC.

4. General Business

BS commented on the status of the Ulan Public School and whether it is still open. HU confirmed the Ulan Public School is in recess. BS asked if the decrease in numbers are related to mining. HU commented that land acquisitions hadn't helped and with the recent school zoning changes, the school population has decreased.

Jl asked if MCO/Yancoal has a position on the Intergovernmental Panel on Climate Change (IPCC) - United Nation's call to phase out coal mining and exploration by 2030. SA advised MCO will take that question on notice - **Action**.

5. Next Meeting: 30th November 2021

Meeting closed at 5:06pm with LA thanking attendees for their participation via BluJeans.

Action Items:

Item	Action	Responsibility
1	MCO to provide a general update on the EL6288 Nth drilling program	MCO
2	MCO to confirm the limit of Aluminium for release water	MCO
3	MCO to investigate their current feral animal control programs in the vicinity of Saddlers Creek	MCO
4	Yancoal's position on IPCC's call to phase out coal mining by 2030	MCO

Community Consultative Committee Update

September 2021

Moolarben Coal Operations



COVID – 19 Update

- Yancoal continues to proactively manage and monitor the situation and follow the NSW health advice and orders.
- Yancoal have been supporting testing, vaccination facilities, and encouraging MCO personnel to get vaccinated.
- Contactless deliveries.
- Site access restrictions, screening on entry, and enhanced cleaning continues.
- Implementation of social distancing and reinforcement of hygiene practices.
- Community support focused on COVID response and health.



2021 Community Support Program (CSP)

2021 Yancoal-Moolarben Coal CSP events thus far include;

New TV and Communications equipment for Mudgee Legacy Branch



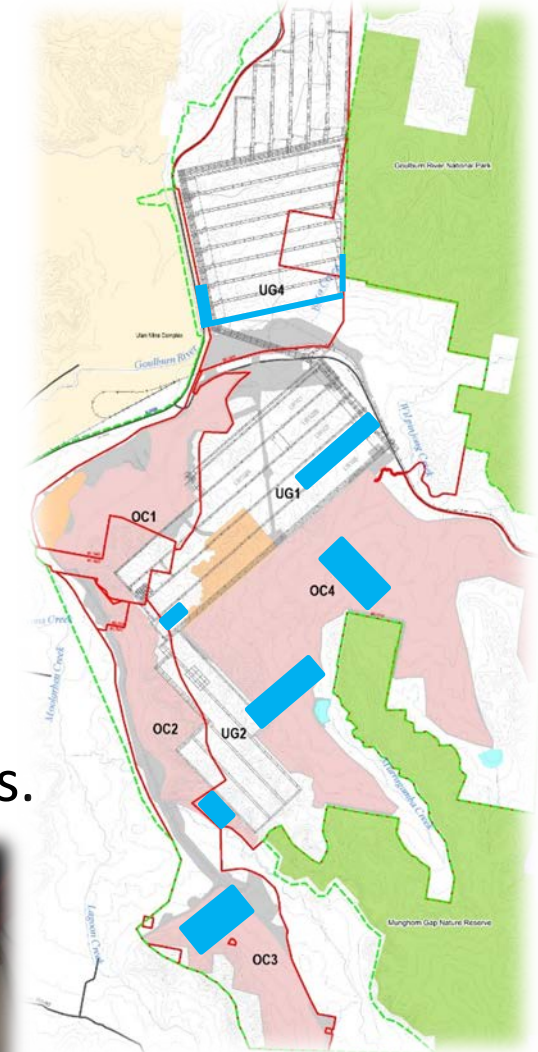
Tree guards installed around 6 *E. Albens* planted at Lake Windamere Camping Area



Yancoal-Moolarben Coal will continue to work closely with CSP recipients that have been impacted by Covid-19 in 2021.

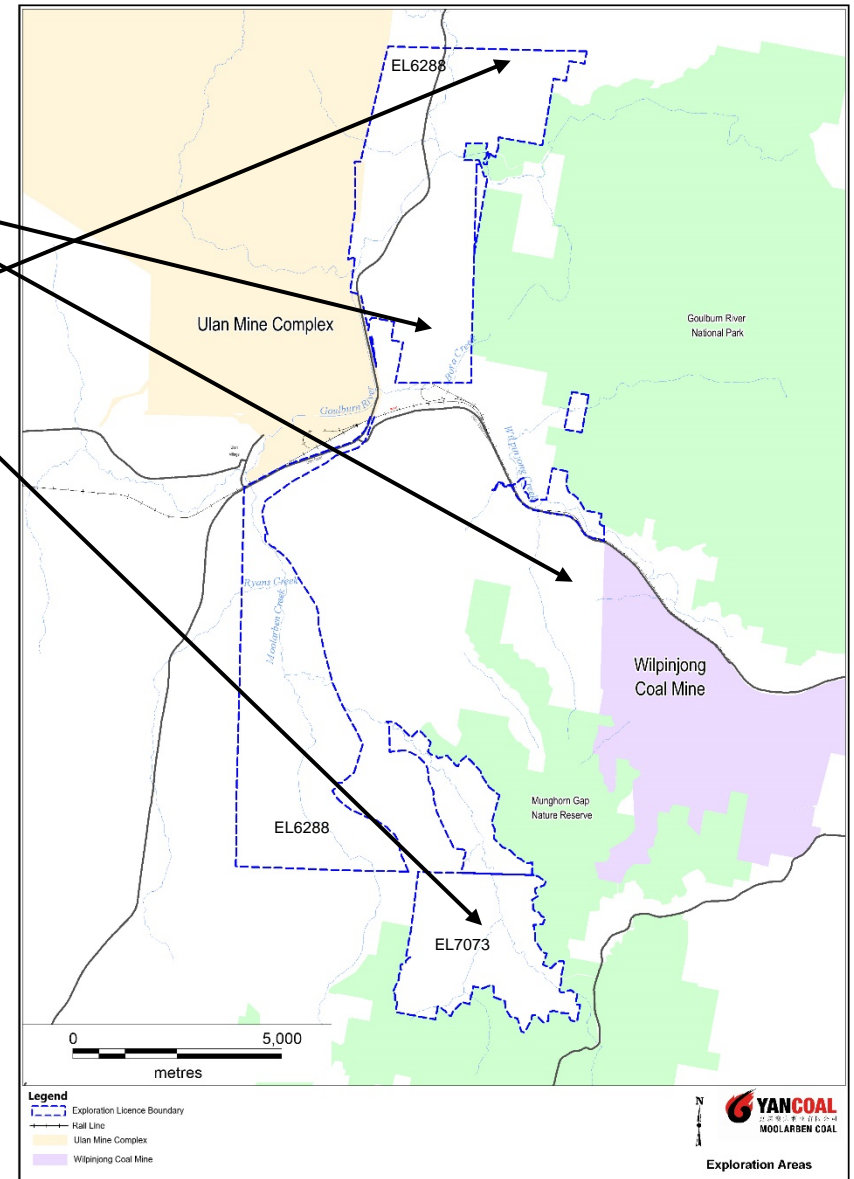
Operational Update

- Underground 1 longwall in 104 and 105.
- Open cut operations in OC2, OC3 & OC4.
- Underground development in UG4.
- LW401-408 Extraction Plan being prepared.
- WTP continue as required.
- IWQS ecotoxicology and analysis work is progressing.
- UG4 surface infrastructure construction continues.



Exploration Update

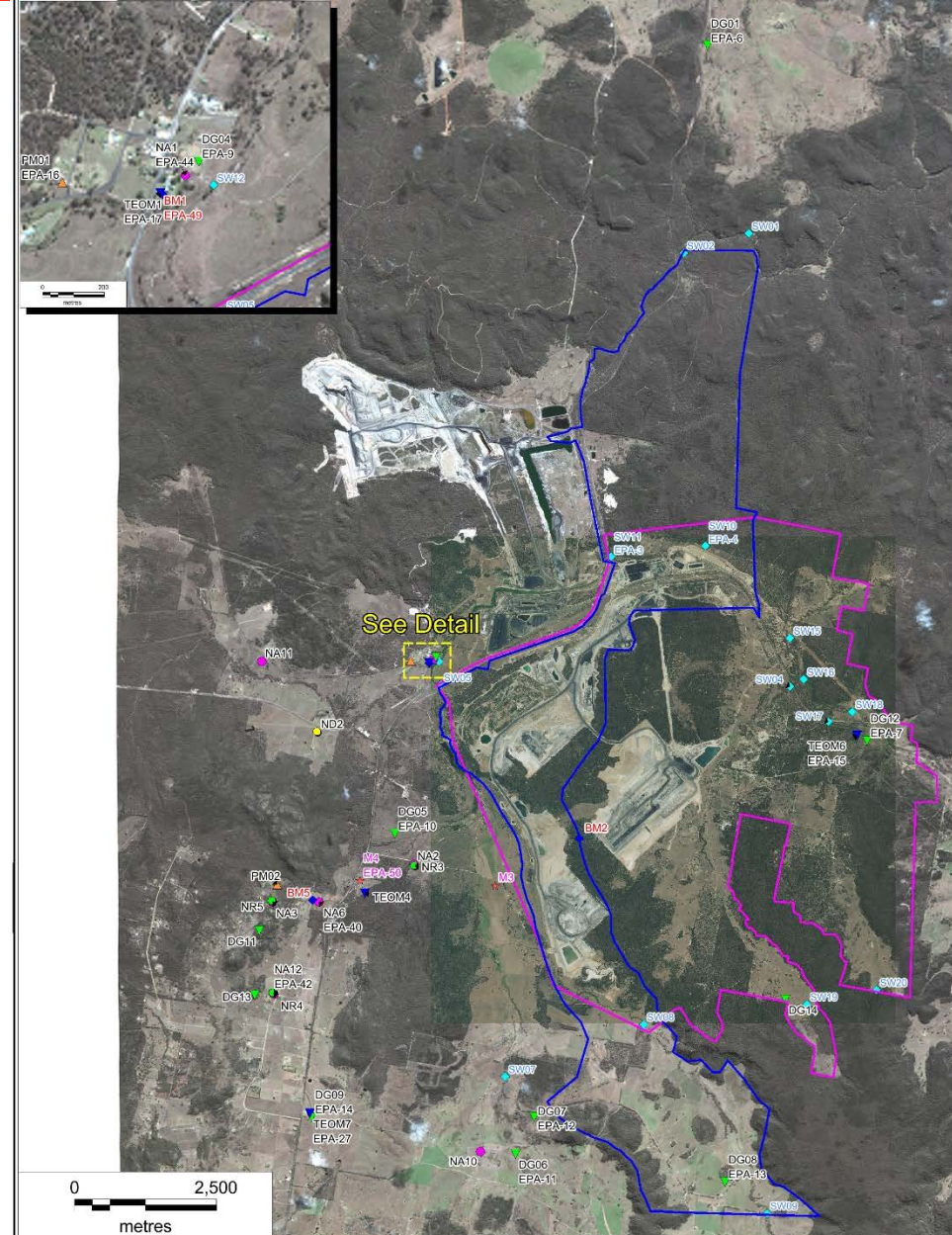
- Drilling – programs planned in ML1605 and ML1715
- Drilling commenced in EL7073 and EL6288 north
- Rehabilitation and monitoring activities have continued during the period.



Environmental Monitoring

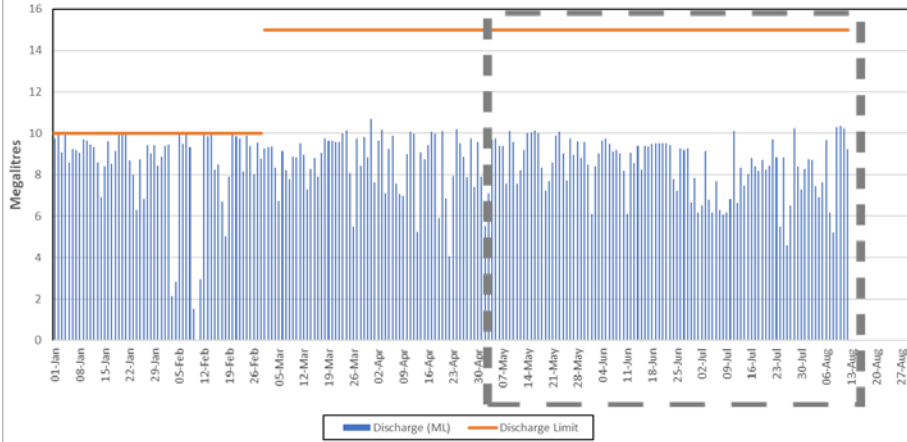
Monitoring network

- Water;
- Air Quality;
- Blasting;
- Noise;
- Meteorology.

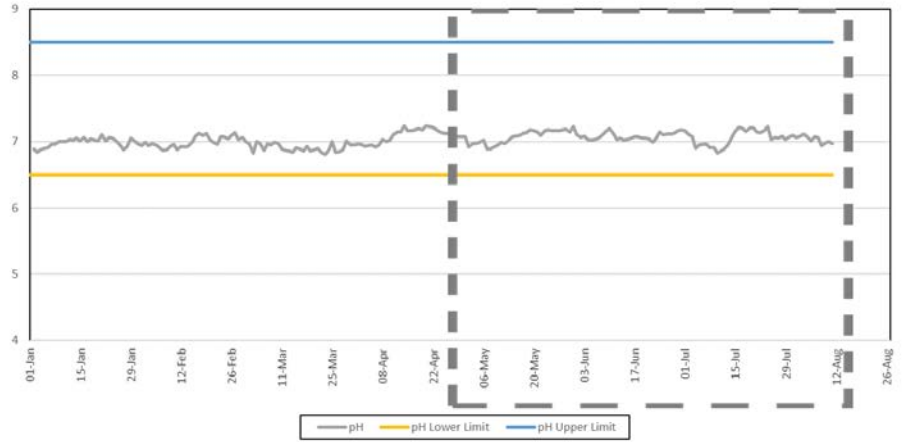


Water Release

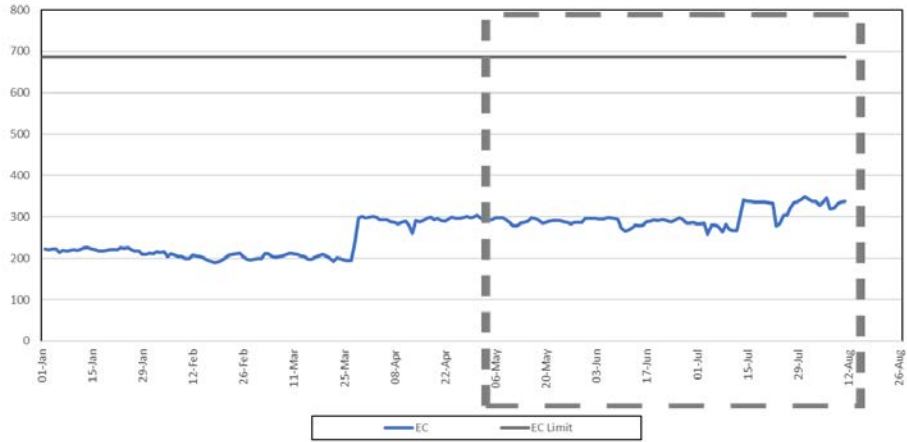
EPA 1 Daily Discharge Volumes
January - August 2021



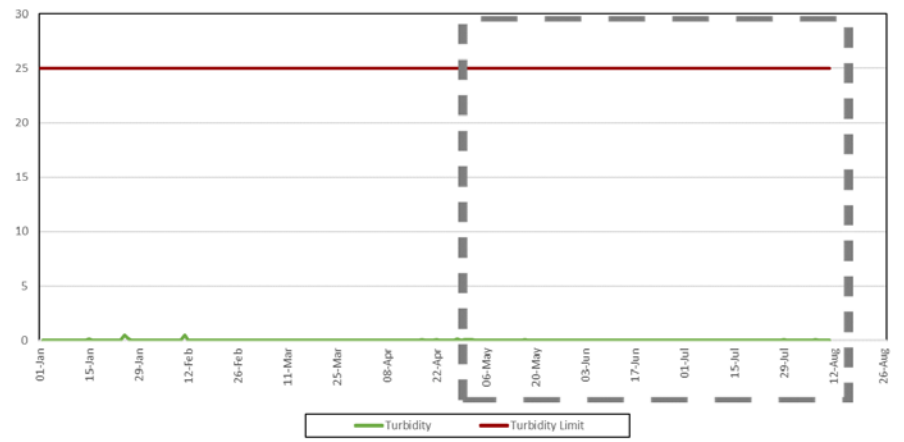
EPA 1 Daily Average pH
January - August 2021



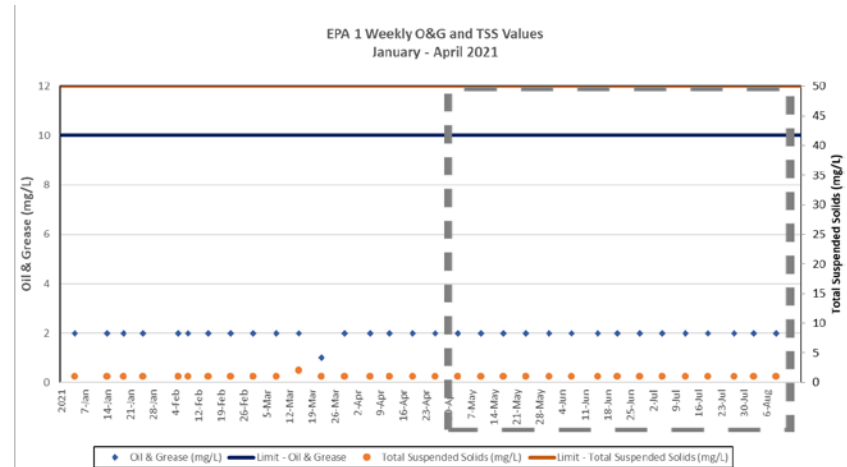
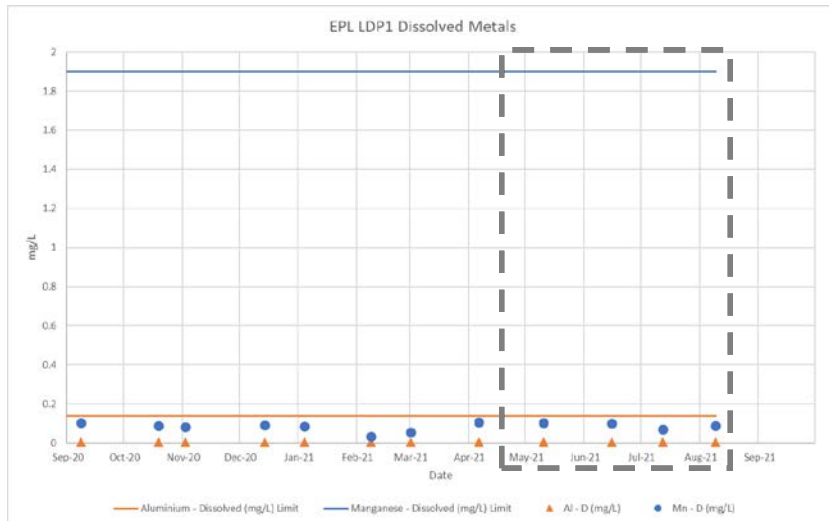
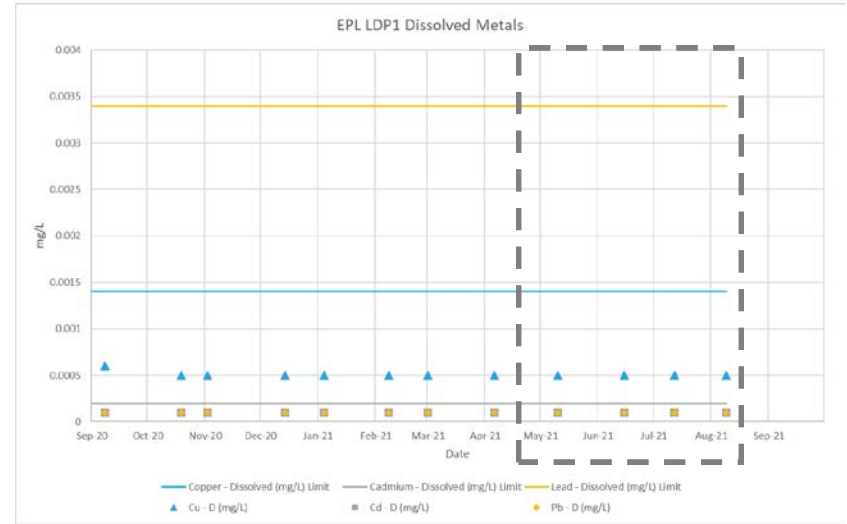
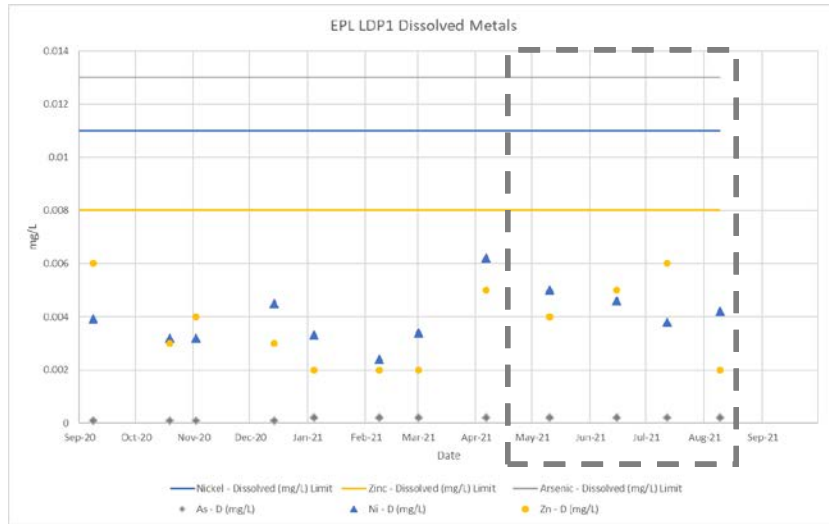
EPA 1 Daily Average EC
January - August 2021



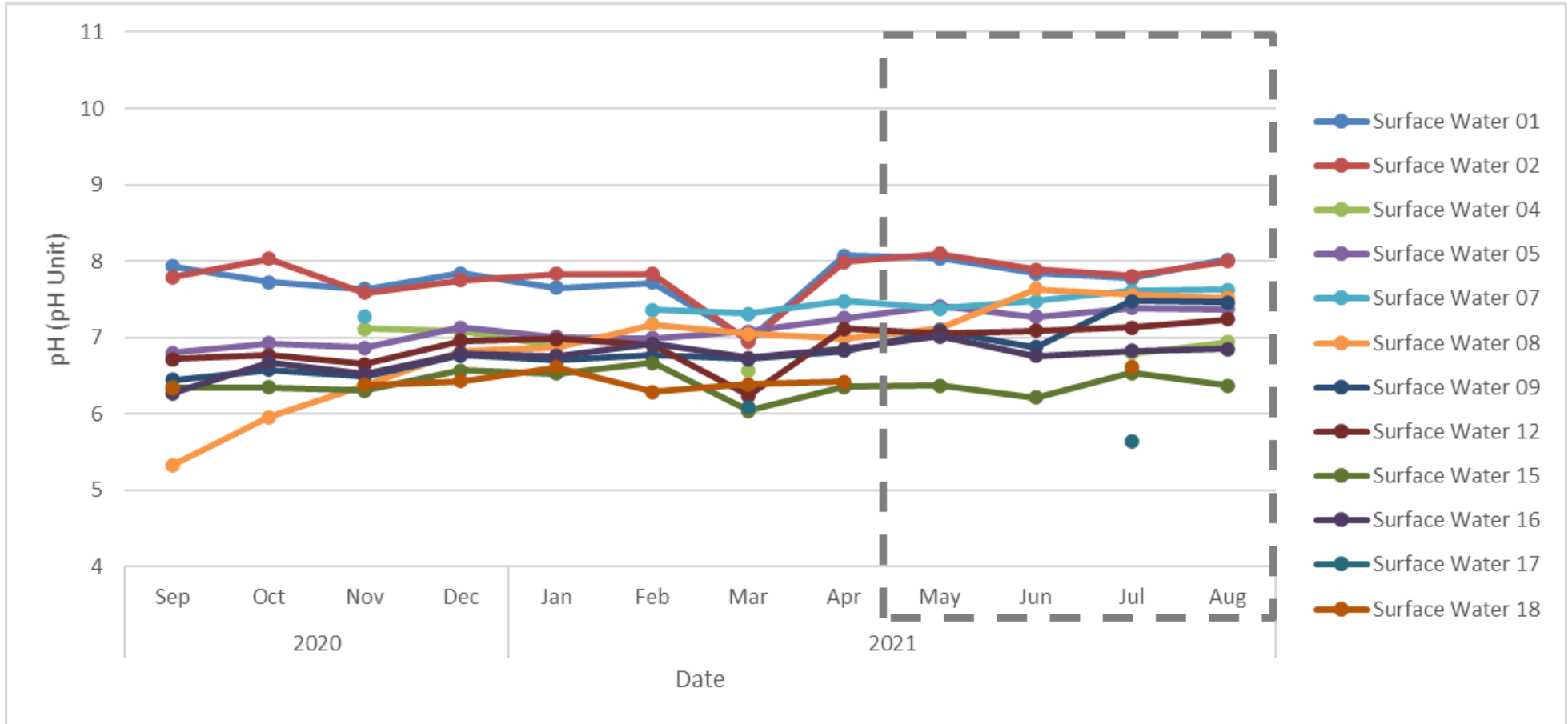
EPA 1 Daily Average Turbidity
January - August 2021



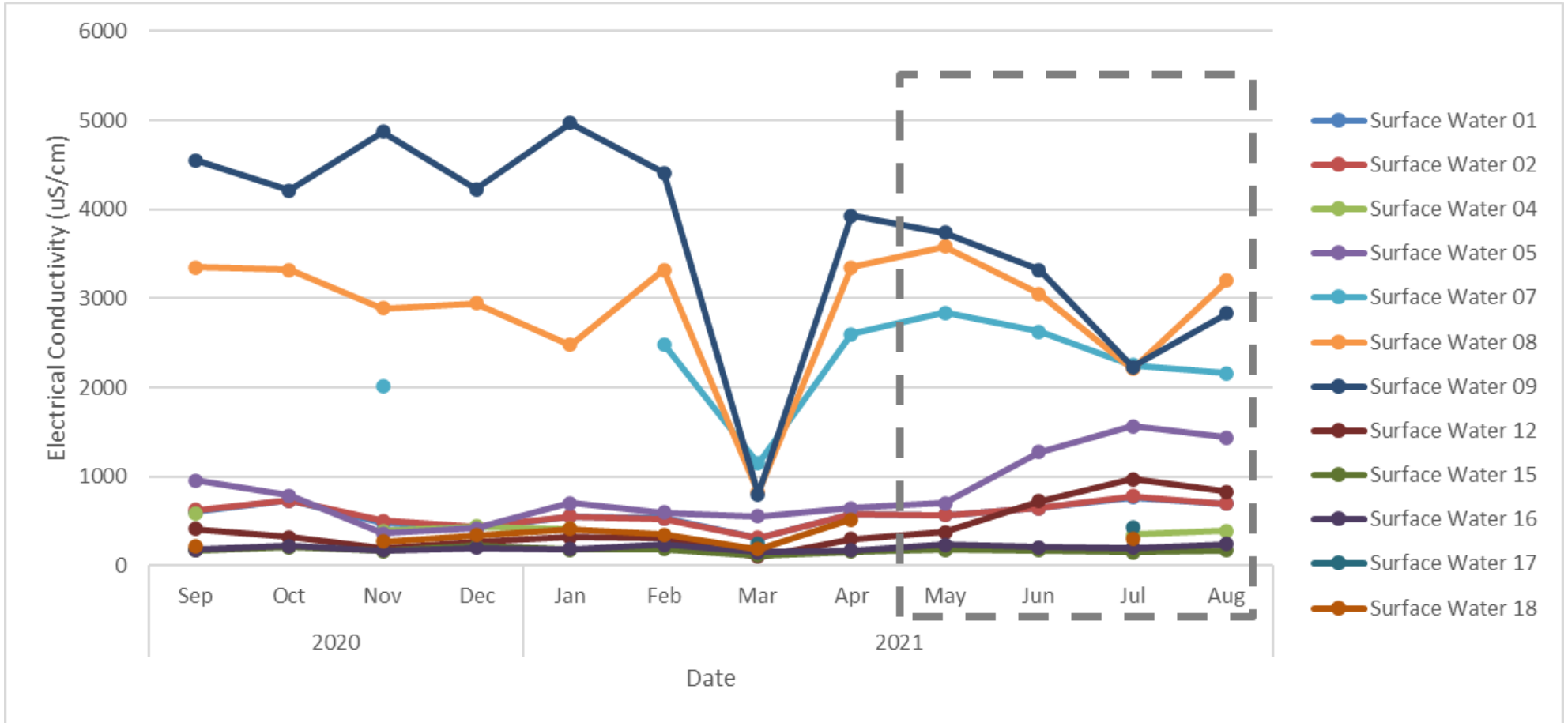
Water Release



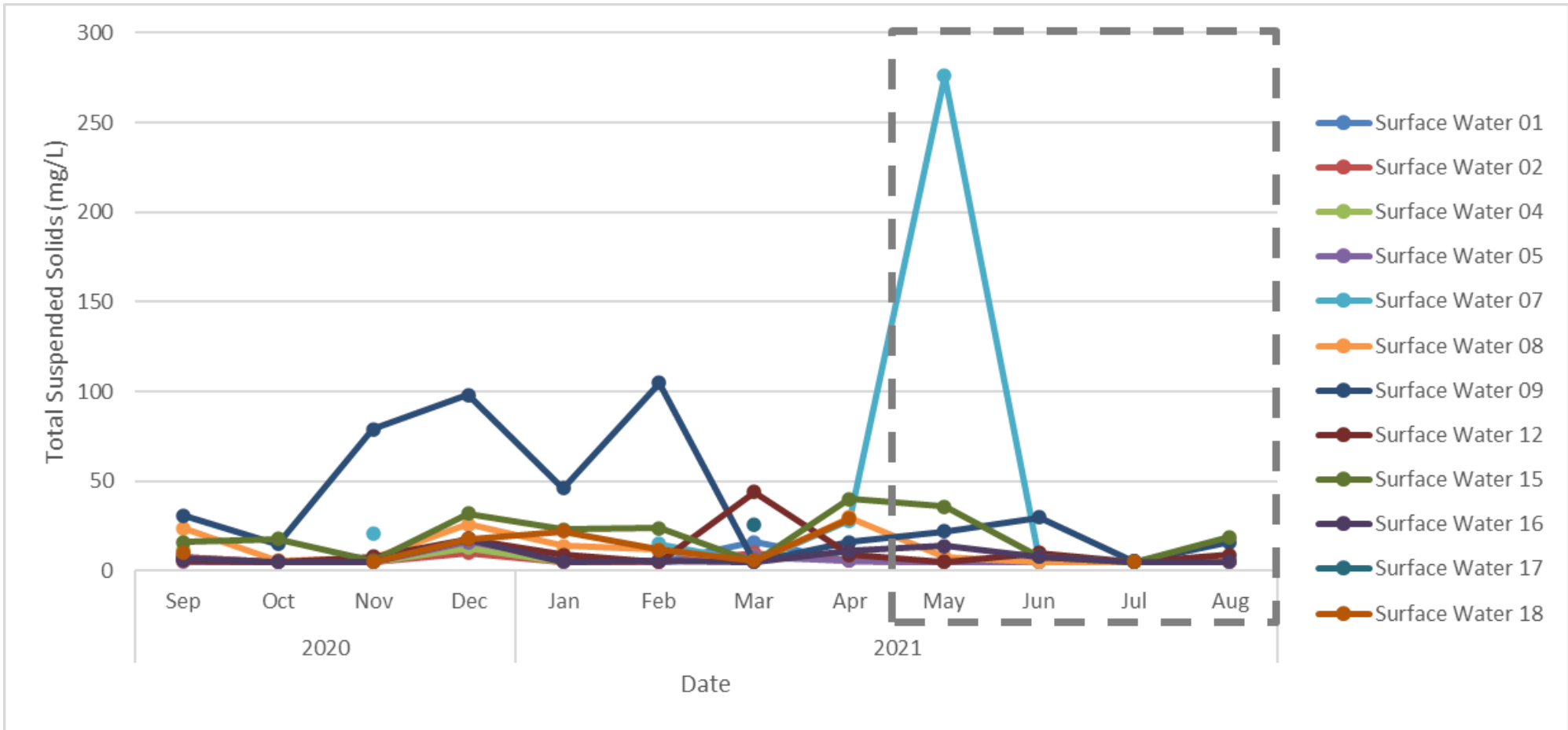
Water Quality - pH



Water Quality - EC



Water Quality - TSS



Air Quality

Site	August 2020 PM10 Annual Average ($\mu\text{g}/\text{m}^3$)	August 2021 PM10 Annual Average ($\mu\text{g}/\text{m}^3$)	Air Quality PM10 Annual Average Criteria ($\mu\text{g}/\text{m}^3$)
TEOM 01	17.1	13.4	25.0
TEOM 07	12.7	9.4	25.0
TEOM 04	16.4	12.2	25.0

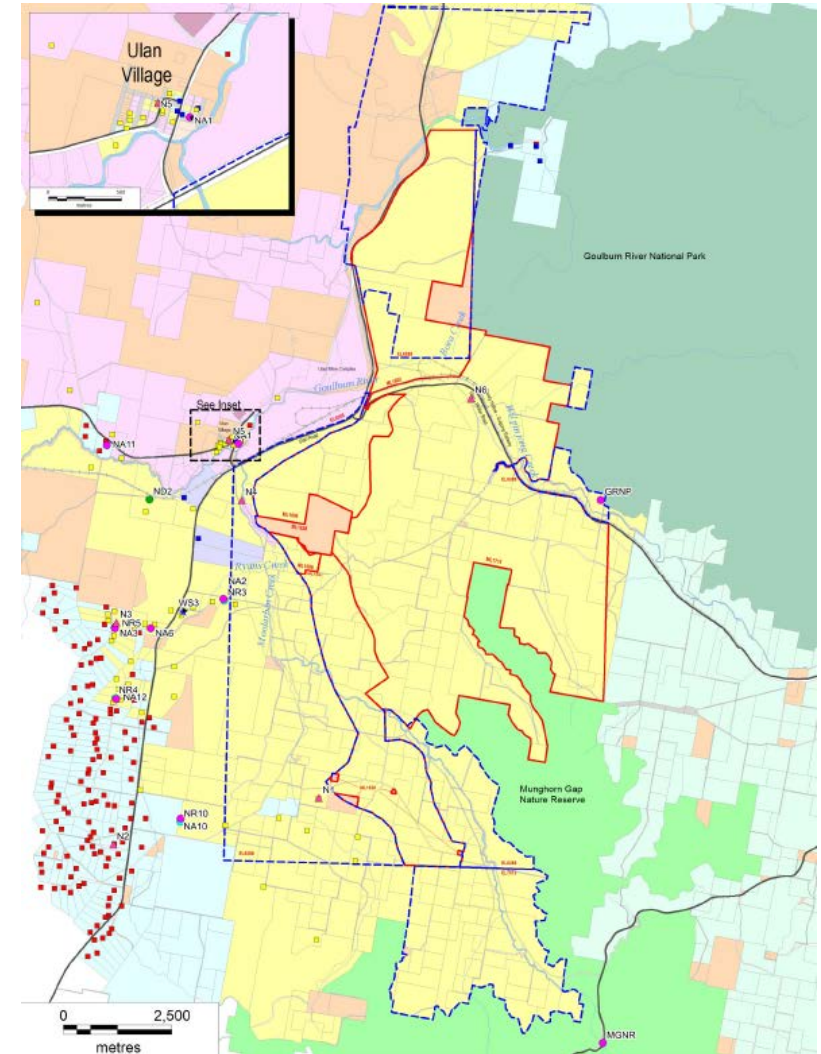
Site	April 2020 PM2.5 Annual Average ($\mu\text{g}/\text{m}^3$)	April 2021 PM2.5 Annual Average ($\mu\text{g}/\text{m}^3$)	Air Quality PM2.5 Annual Average Criteria ($\mu\text{g}/\text{m}^3$)
TEOM 07	5.5	5.2	8.0

Monthly monitoring reports are available on our website:

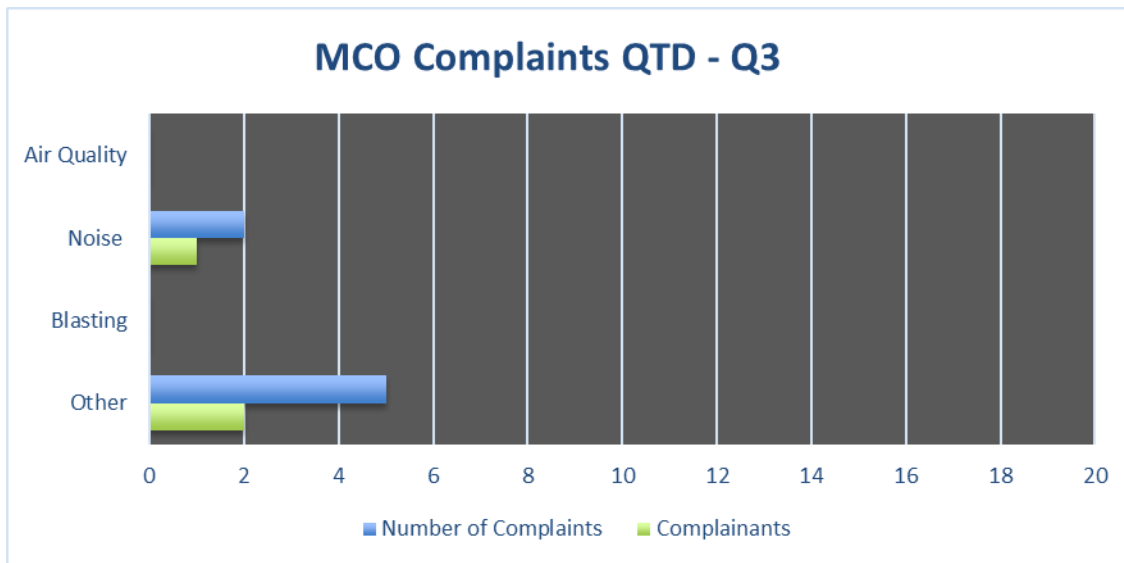
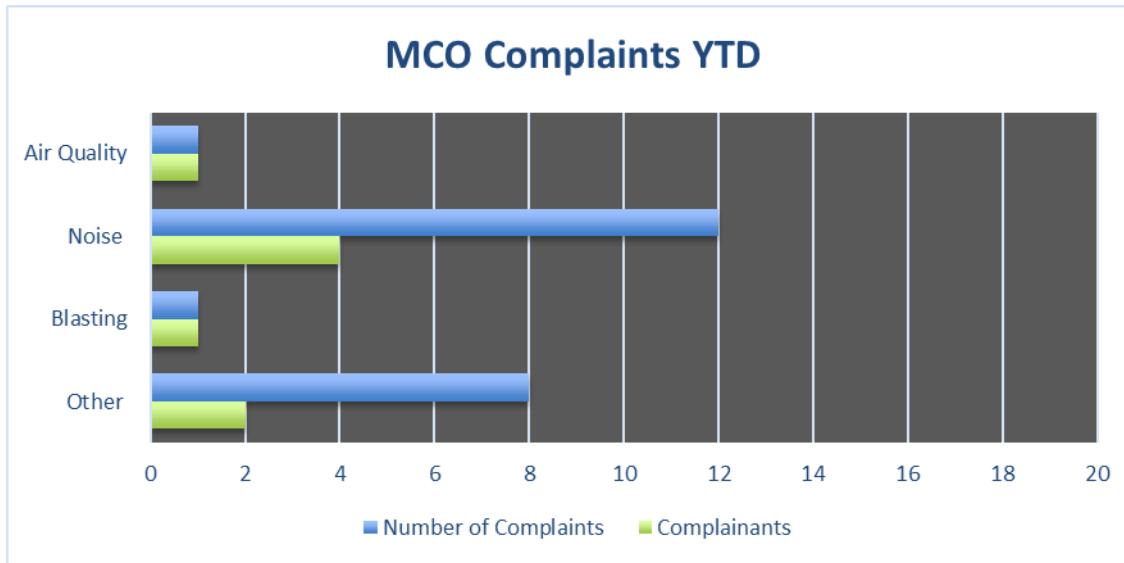
www.moolarbencoal.com.au/page/environment/environmental-monitoring/

Noise Monitoring

- All monthly & quarterly attended noise monitoring within criteria.
- Continued implementation of:
 - Planning controls - scheduling
 - Engineering controls - attenuation
 - Operational controls - bunds/screens
 - Real-time monitoring triggers
 - Real-time response protocols

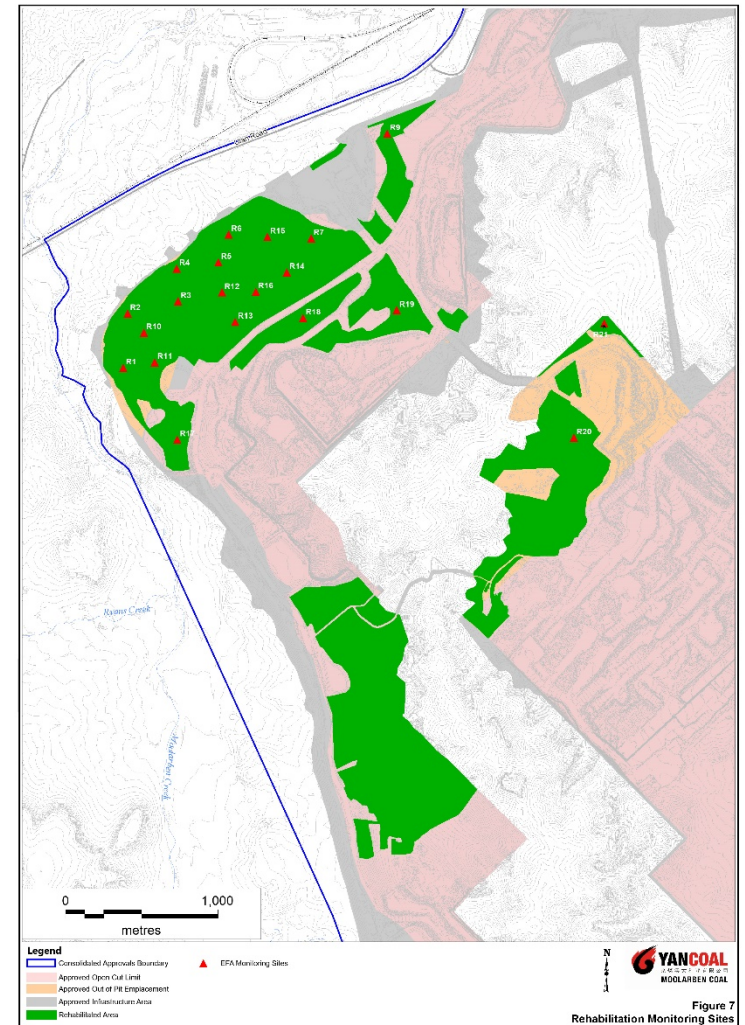


Community Complaints



Rehabilitation Update

- Rehabilitation maintenance works are continuing.
- Spring monitoring is scheduled to commence



Biodiversity Offset Areas Update

- 2021 Planting program is well underway.
- Weed control, Feral animal control and offset maintenance works have continued.
- Spring monitoring is scheduled to commence



Before

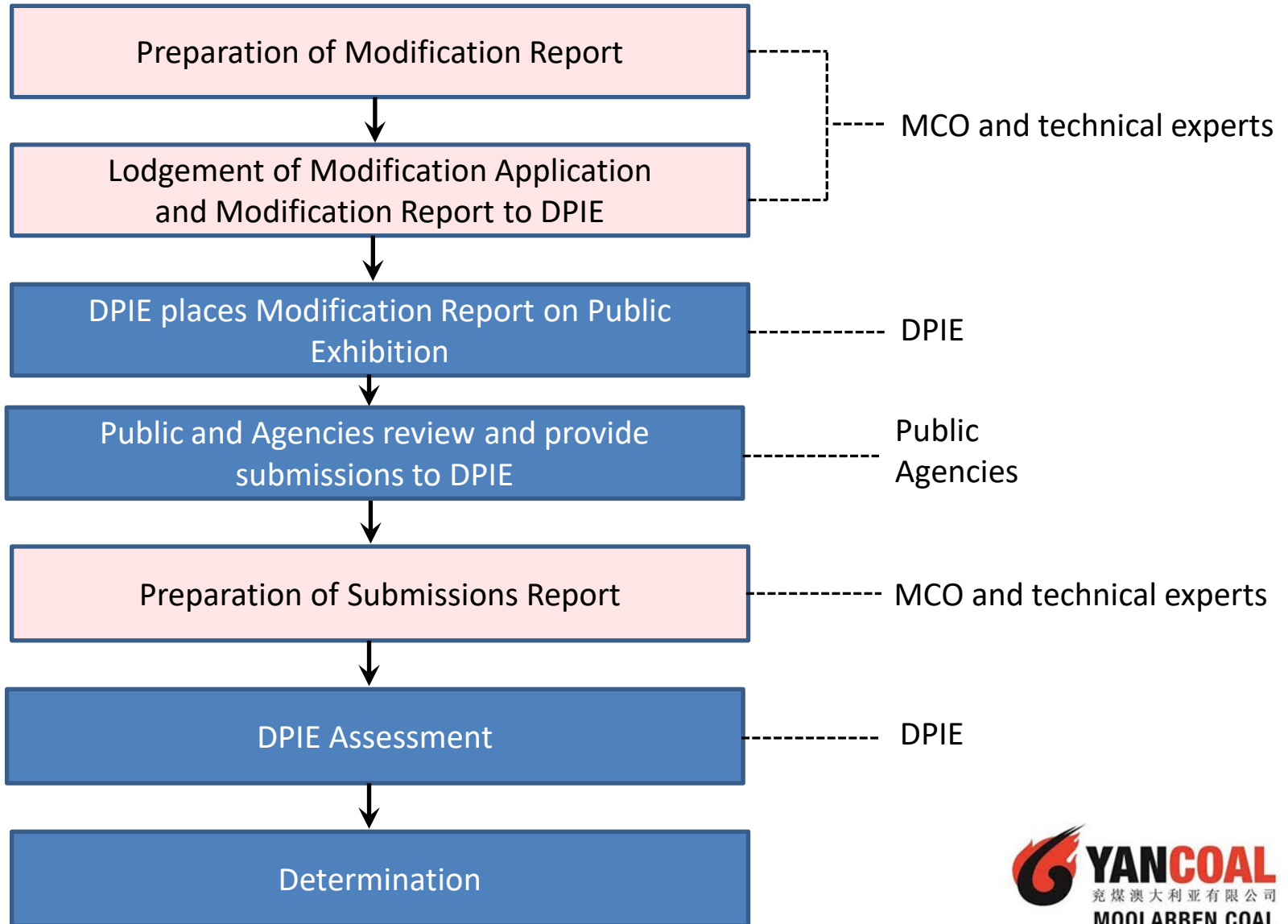


After



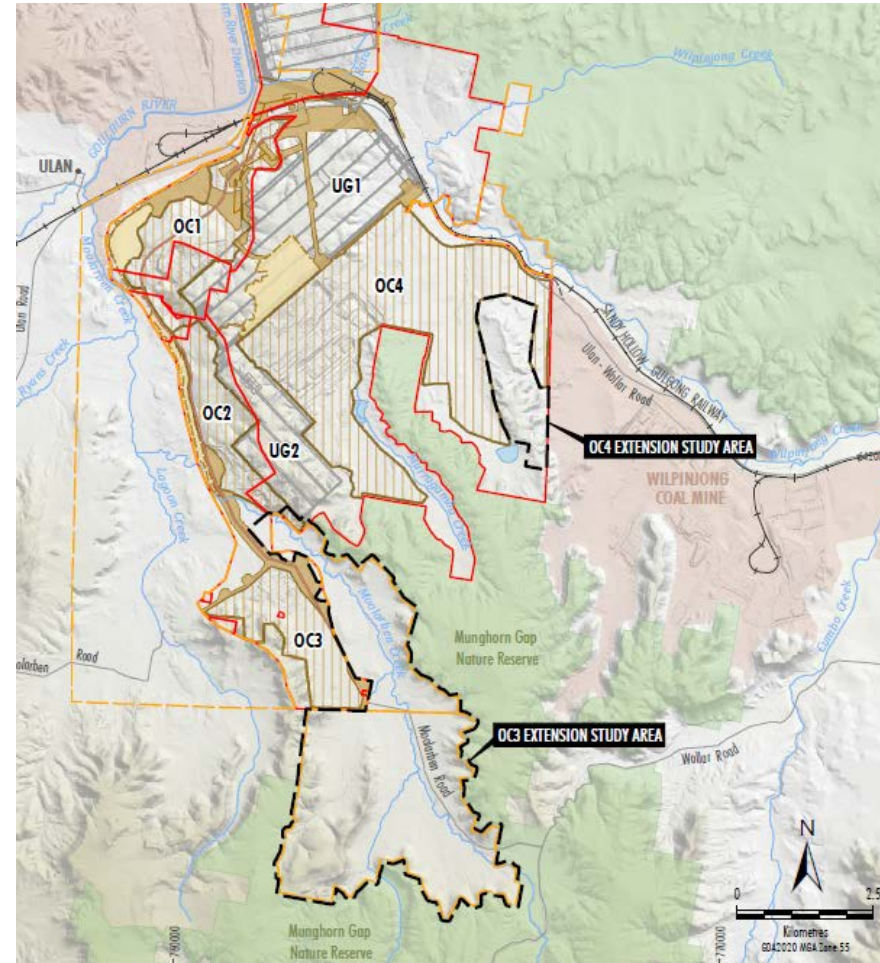
Underground 2 Modification

Current Status
→



Open Cut Extension Projects

- Two areas under investigation for open cut extension projects:
 - OC3 extension within EL 6288 and EL 7073
 - OC4 extension within ML 1715
- OC3 and OC4 extensions to be split into separate EIS's and planning applications
- EIS for OC3 extension to proceed ahead of OC4 extension
- Scoping Report currently being prepared for OC3 extension



Social Impact Assessment

- A component of the Scoping Report and EIS is the Social Impact Assessment (SIA).
- Social engagement specialist CDM Smith undertook initial engagement as part of the SIA in June and July with the following stakeholders:
 - Local Landholders
 - CCC Members
 - Mudgee Local Aboriginal Land Council
 - Mid-Western Regional Council
 - Service Providers
 - Mudgee District Local Environment Group
 - Agencies
- The outcomes of this initial consultation will be described in the Scoping Report
- Engagement will continue throughout the preparation of the EIS

Employment Update

Current Traineeships

- 5 Underground
- 1 Administration
- 3 Land Conservation

Apprentices

- Currently 4 Underground,
6 Open Cut and 5 at the CHPP

General

- 2022 apprentice intake expected to commence shortly.





8 September 2021

