

**MOOLARBEN COAL OPERATIONS - COMMUNITY CONSULTATIVE COMMITTEE  
MEETING No. 64**

**Date:** Tuesday 7<sup>th</sup> March 2023  
**Time:** 1:04 pm  
**Location:** Moolarben Coal Open Cut Administration Board Room, Ulan  
**Attendance:** Independent Chairperson  
Lisa Andrews (LA)

Community Members

Dr Julia Imrie (JI)  
Aleshia Lonsdale (AL)  
Mayor MWRC - Cr Des Kennedy (DK)

Moolarben Coal Operations

Brian Wesley (BW)  
Trent Cini (TC)  
Kieran Stephenson-Banks (SB)  
Morgan Yeatman (MY)  
Clarine Fourie (CF) {Minute taker}

Apologies

David Lowe (DL)  
Bev Smiles (BS)  
Rebecca Shanks (RS)  
David Stokes (DS)  
Helen Ungaro (HU)  
Cr Katie Dicker (KD) – MWRC Delegate

***Meeting 64 Agenda and Presentation and Meeting 63 Minutes were provided to all meeting attendees.***

## 1. Introduction and Welcome

Lisa Andrews (LA) opened the meeting and welcomed all attendees to the Moolarben Coal Operations (MCO) Community Consultative Committee (CCC).

LA advised there are no changes to the declarations by the CCC members. TC introduced Kieran Stephenson-Banks and informed LA that updated declarations will be provided (**Action 1**).

## 2. Apologies

David Lowe (DL)

Bev Smiles (BS)

Rebecca Shanks (RS)

David Stokes (DS)

Helen Ungaro (HU)

Cr Katie Dicker (KD) – MWRC Delegate

## 3. Business Arising from Previous Finalised Minutes

LA confirmed previous meeting minutes finalised and distributed on 14 December 2022.

TC informed the members that the previous action items will be addressed during the presentation.

*Actions from Meeting 63:*

1. Check website for response to submissions for proposed UG 2 Modification [Complete](#)
2. Confirm stygofauna sampling locations for OC3 extension project [Complete](#)
3. Provide an electronic copy of community newsletter to CCC members [Complete](#)

### Correspondence as sent with the Meeting Notice on 20/02/23:

- 7/12/22 – Email to members with draft minutes for review. Comments received.
- 14/12/22 – Email to members with final minutes.
- 23/12/22 – Email from MCO with the EPA'S approval of a further variation to the MCO Environmental Protection Licence. Forwarded on to members the same day.
- 19/1/23 – Email from TC advising that the emergency water discharge has ceased. This information was forwarded through to members on 21/1/23.
- 29/1/23 – Email from BS with request for MLA information. Forwarded through to MCO for response.
- 30/1/23 – Email from MCO with requested MLA information. Forwarded through to members on 1/2/23.
- 20/2/23 – Email to members with the Meeting Notice & Agenda for this CCC.
- 03/03/23 – Email to members reminding them of the meeting.
- 05/03/23 – Email from JI with a list of questions for the meeting.

### CCC Update Presentation

TC welcomed CCC members and provided an update on the 2022 Community Support Program (CSP) and Community Events since the last meeting.

TC provided an operations update including the progress of the installation of the Global Navigation Satellite System (GNSS) monitors. JI asked where the GNSS monitors were located in relation to UG4 longwalls (LW). TC stated that they are within the footprint of the LW and situated dependent on various factors such as tree cover.

TC provided a response to JI's provided questions, including provision of the request monitoring data (post meeting), an update on the progress of the GNSS monitors, update on the installation of groundwater monitoring bores above UG4, update on the installation of SW22. JI asked about the installation of monitoring bores PZ-E and PZ-F. TC advised that the bores will be located on MCO land in the northern section of UG4.

JI queried the position of the new bores for monitoring the hydraulic gradient of groundwater and Goulburn River alluvium, stating these are necessary to quantify loss of river baseflow. TC replied that the new monitoring sites would support the quantification of baseflow loss due to UG4, which would continue to be determined using the groundwater model (or other appropriate method determined in consultation with the DPE and the IAPUM).

JI asked about groundwater make from the UG operations and how this extraction rate compares to modelling predictions. TC advised that average underground dewatering since last meeting has been approximately 25 Megalitres per day, this includes recirculation from the water stored in open cut pits, water supply and groundwater inflows.

TC provided an update on exploration.

MY provided an update on environmental monitoring.

MY advised the monitoring results for discharge water were generally consistent and in compliance. LA asked why there is a gap in the data. TC replied that the gaps are when MCO are not discharging due to the WTP upgrade.

MY provided an update on the emergency discharge results. JI queried whether any water quality limits were set by the EPA for the emergency discharge. MY confirmed that no limits were set. JI queried why there is no electrical conductivity (EC) results. TC replied that EC was not required to be monitored under the Environmental Protection License for discharge points LDP53 and LDP54. TC stated that EC was generally within the range of 1500 to 2550.

MY provided an update on surface water results. JI asked about the increase in the Goulburn River monitoring locations. TC replied that the additional sites, SW22, SW23 and SW24 were new monitoring points of which SW22 is upstream and SW23 and SW24 were downstream.

MY provided an update on air quality with current levels reflective of climatic conditions.

MY advised all noise monitoring was completed and compliant with the relevant approved noise management plan.

MY provided an update on complaints. JI queried whether the noise complaints were from Ridge Road area. TC replied that the noise complaints were generally from the Ridge Road / Cooks Gap area.

TC provided a rehabilitation and offset management update. JI asked if there has been much natural regrowth at the Dun Dun offset. TC replied that there has been a significant amount of natural regrowth on most of our offsets with Dun Dun in particular seeing good results. JI asked if identification is conducted on the native regrowth. TC stated that as part of the monitoring program transects are used to monitor regrowth within the offsets. JI questioned if we have any issues with kangaroos impacting plantings. TC replied that there are a few kangaroos which impact our plants. LA asked how it is deterred. TC stated that in areas where it has been observed to have higher grazing impacts a deterrent has been used with varying results (**Action 2**).

TC provided an update on the modification.

TC provided an update on the Open Cut 3 Extension Project. TC addressed Action 2 from the last meeting regarding stygofauna. TC stated that 10 GW bores were monitored during the process, of which 8 are in the project area. TC stated that MCO currently aims to have the responses to submissions submitted around mid-year. The CCC will be informed when it has been completed.

Jl queried the location of the bores tested for stygofauna and commented that in her opinion additional sites that were outside the current mine disturbance area including sampling from the surrounding springs, should also have been tested. TC replied that experts were engaged to identify, investigate, and assess the stygofauna monitoring in the area.

TC provided an update on the extension project.

TC provided an employment update. Jl asked how many employees MCO were still looking for. BW stated that MCO were looking for around 80. BW advised that the number of trainees at MCO has increased.

#### 4. General Business

Jl asked TC to confirm when the Annual Report is expected. TC confirmed the due date to the department is the 31<sup>st</sup> of March 2023.

Jl discussed a fire ignited by lightning in the national park, between her property and MCO operations during January. Jl stated that RFS access to the fire was limited by locked gates and the response of MCO to the RFS was less than expected and made it difficult to respond quickly. BW stated that from his knowledge there was communication between the MCO and the RFS regarding the fire and that MCO were monitoring it at the time. TC advised Jl that MCO will take on board Jl's information.

5. **Next Meeting:** 6<sup>th</sup> June 2023, on site at 1:00pm. Subsequent 2023 meetings would be 5<sup>th</sup> September and 5<sup>th</sup> December.

Meeting closed at 1:56pm with LA thanking members for their attendance.

#### **Action Items:**

| Item | Action  | Responsibility |
|------|---|----------------|
| 1    | Declaration form – Kieran to LA   | MCO            |
| 2    | Provide CCC Members further information regarding the deterrent trialed in offset plantings | MCO            |



# Community Consultative Committee Update

March 2023

Moolarben Coal Operations





# 2023 Community Support Program (CSP)

## 2023 Yancoal-Moolarben Coal CSP

- A total of 43 applications were received for the 2023 CSP
- 40 applicants were successful.
- The majority of the applications were for the Social & Community category (24) followed by Education and Training category (6) Culture and Arts (6), Health (6) and Environmental (1)

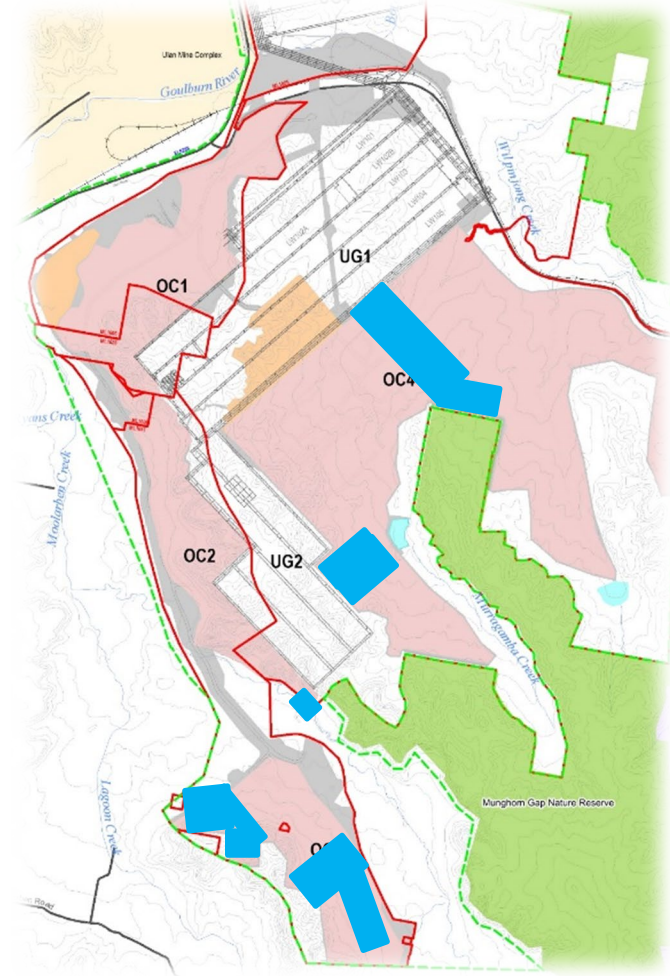
## CSP events so far in 2023 include;

- Gulgong, Rylstone & Mudgee Show



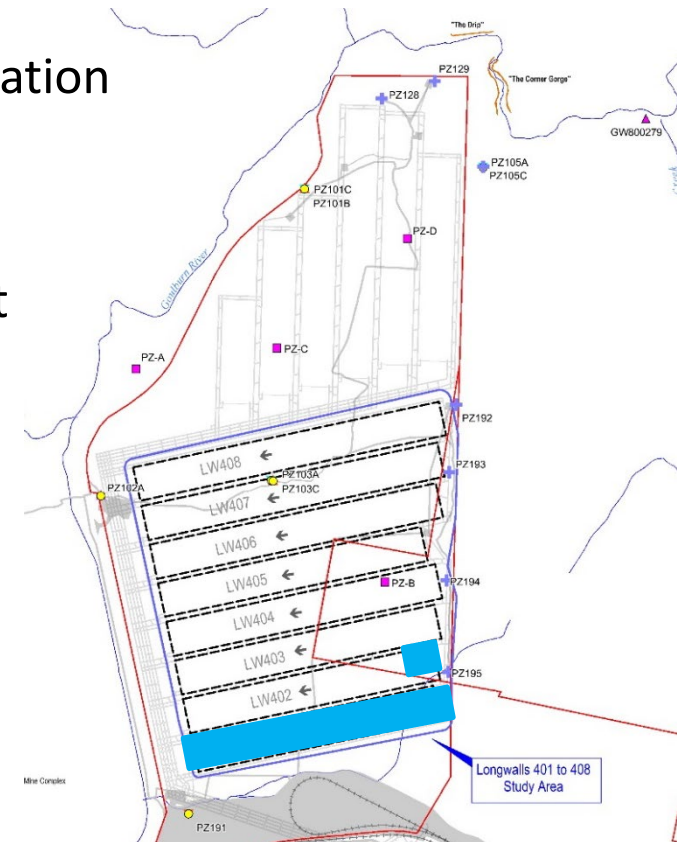
# Operational Update - Opencut

- Open cut operations in OC2, OC3 & OC4.
- WTP continue as required
- IWQS subject to DPE approval.
- Emergency Water Discharge ceased 19 January 2023



# Operational Update - Underground

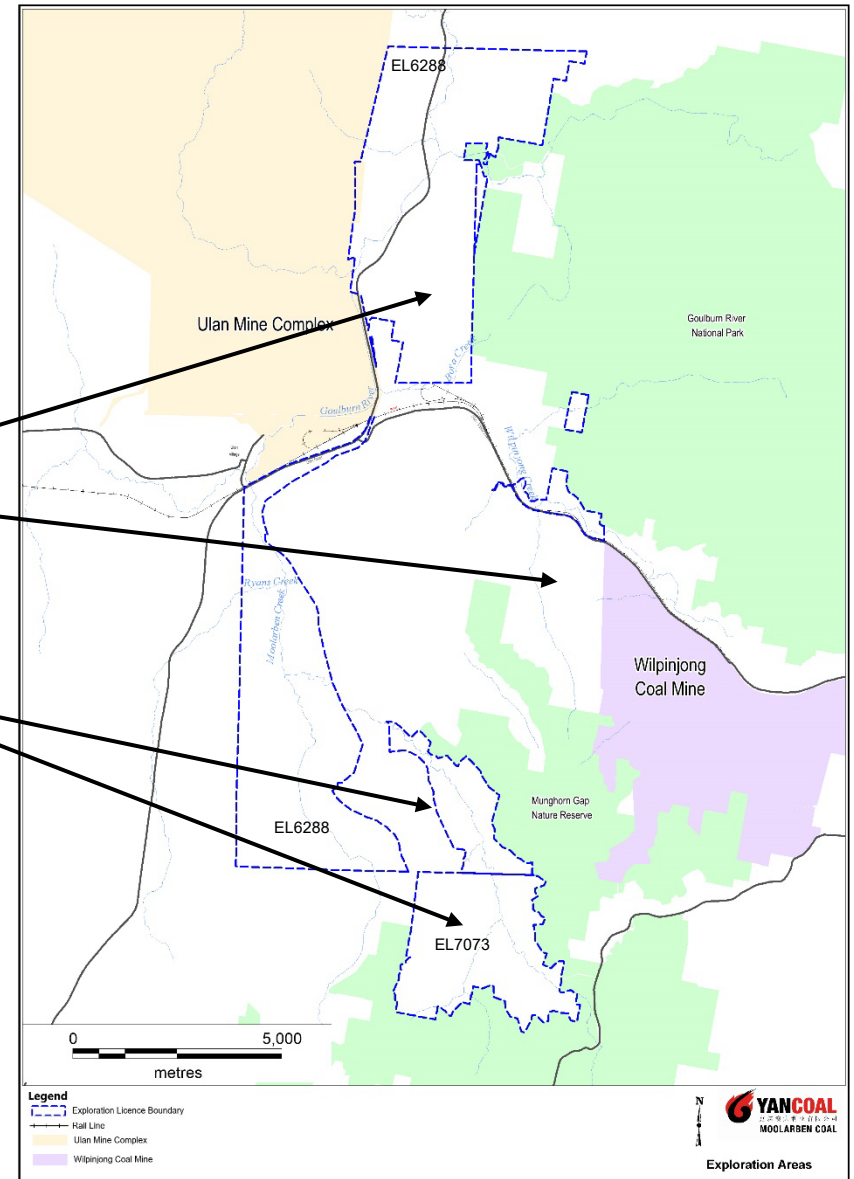
- Longwall mining in UG4 completed in LW401. Longwall operations in LW402
- Continued underground development in UG4.
- UG4 EP continued Implementation
  - Global Navigation Satellite System (GNSS) Array installation on going
  - Monitoring continuing at SW22, SW23 and SW24. Establishment of a surface water monitoring station at SW22 Consultation and REF progressing.
  - Groundwater Monitoring
    - PZ194 and PZ195 – complete
    - PZ – A – planned for 2023
    - PZ – B – complete
    - PZ – C – complete
    - PZ – D – complete
    - PZ – E – planned for 2023
    - PZ – F – planned for 2023





# Exploration Update

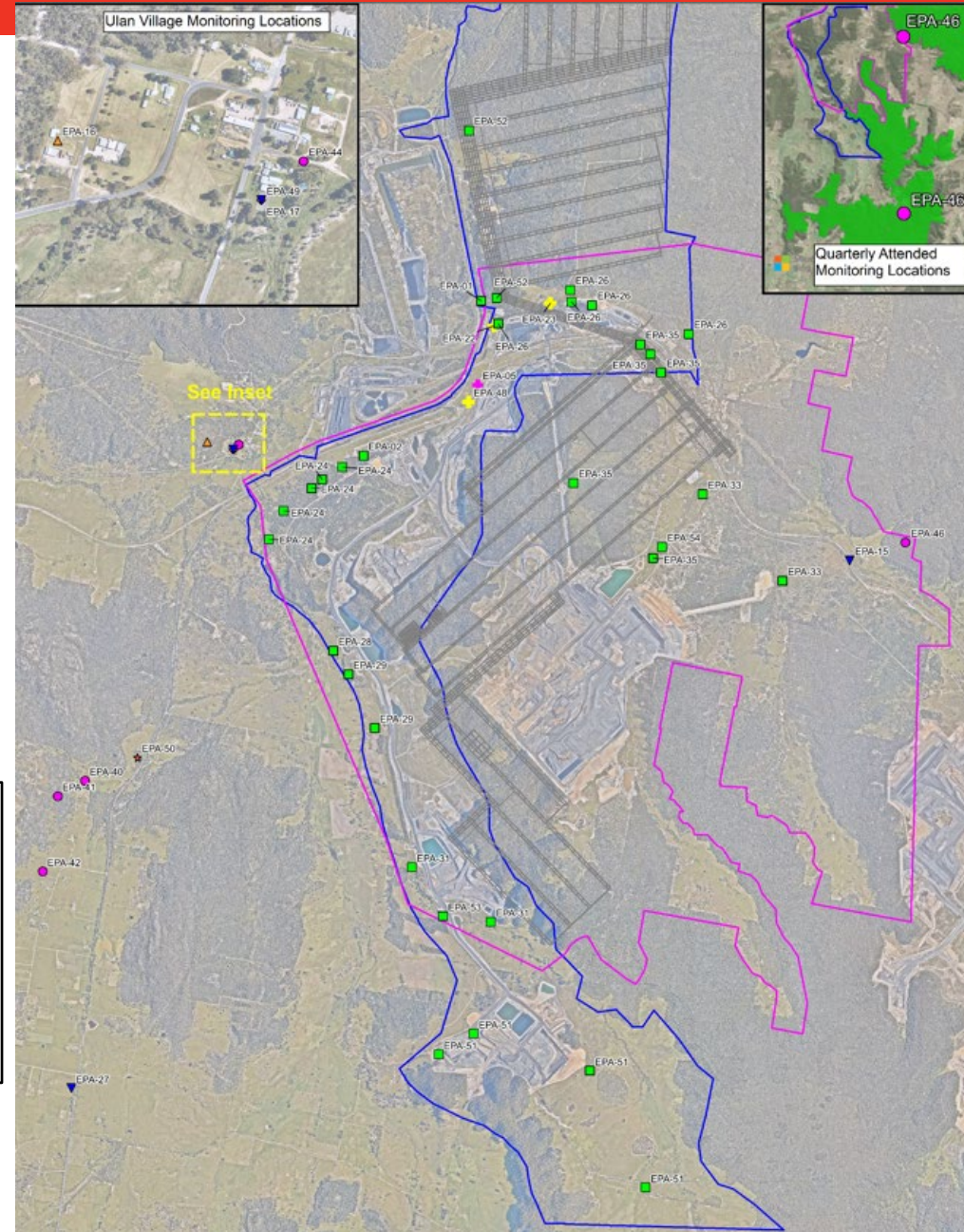
- Wet weather conditions have impacted access to exploration program
- Drilling – Planned to continue in ML1605 and ML1715
- Drilling is planned to continue in EL6288 and EL7073.
- Rehabilitation and monitoring activities have continued during the period.



# Environmental Monitoring

## Monitoring network

- Water;
- Air Quality;
- Blasting;
- Noise;
- Meteorology.



### Legend

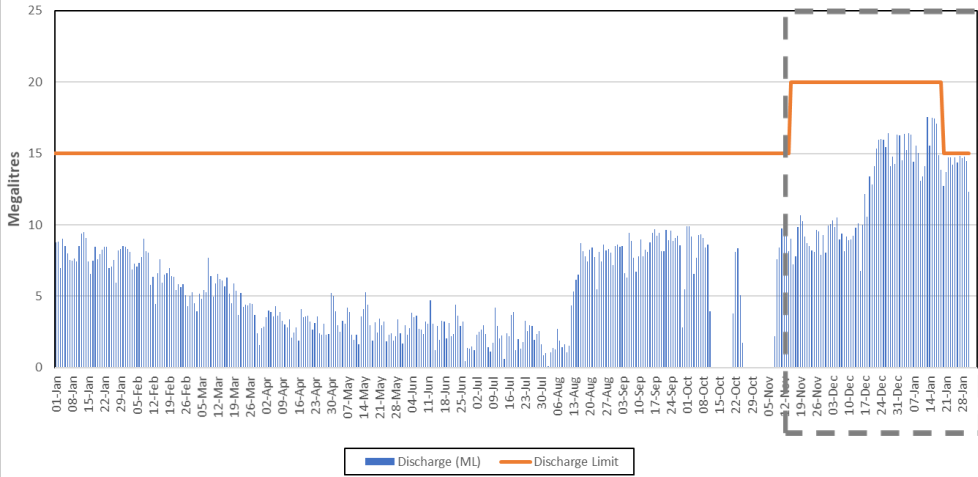
- Stage 1 DA Boundary
- Stage 2 DA Boundary
- Approved Underground Workings

### EPL Monitoring Locations

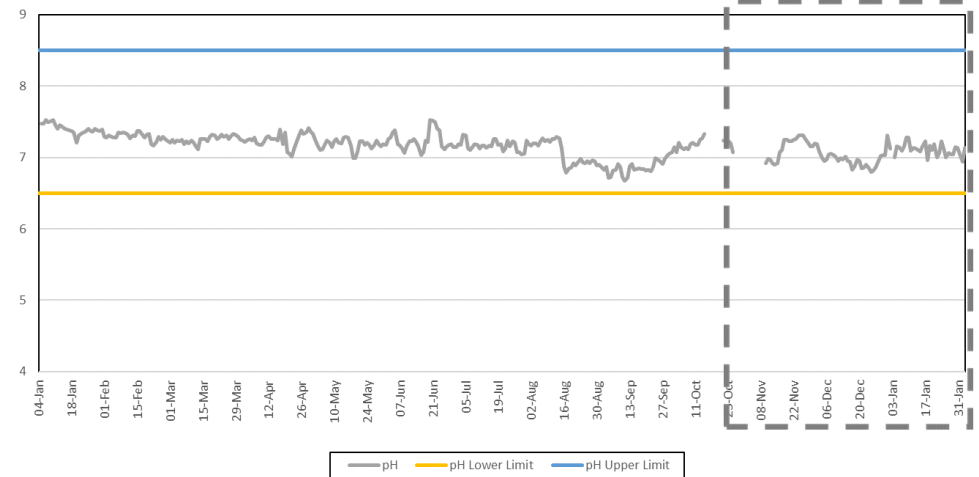
- Real-time TEOM
- Effluent Monitoring
- Water Discharge Point
- Attended Noise Monitor
- Effluent discharge and monitoring
- Blast Monitor
- Weather Station
- PM10 Monitor

# Water Release – EPA01

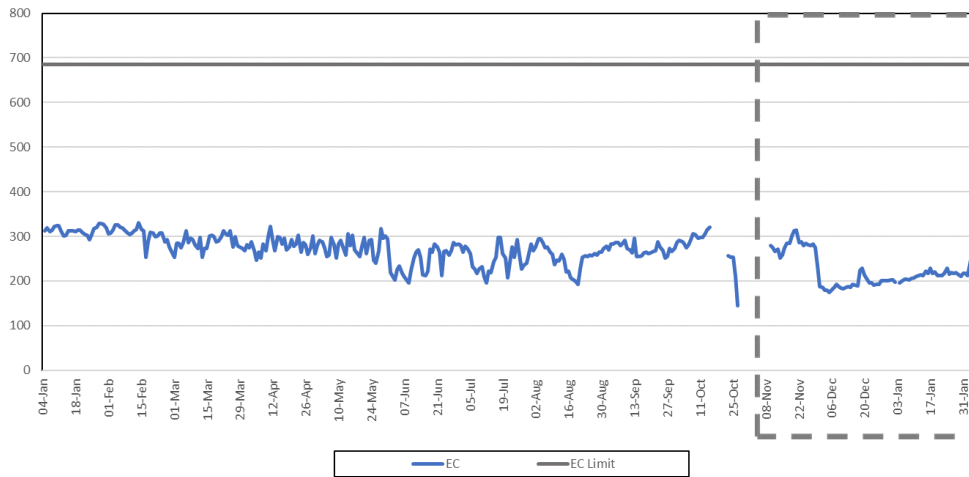
EPA 1 Daily Discharge Volumes  
January 2022 - January 2023



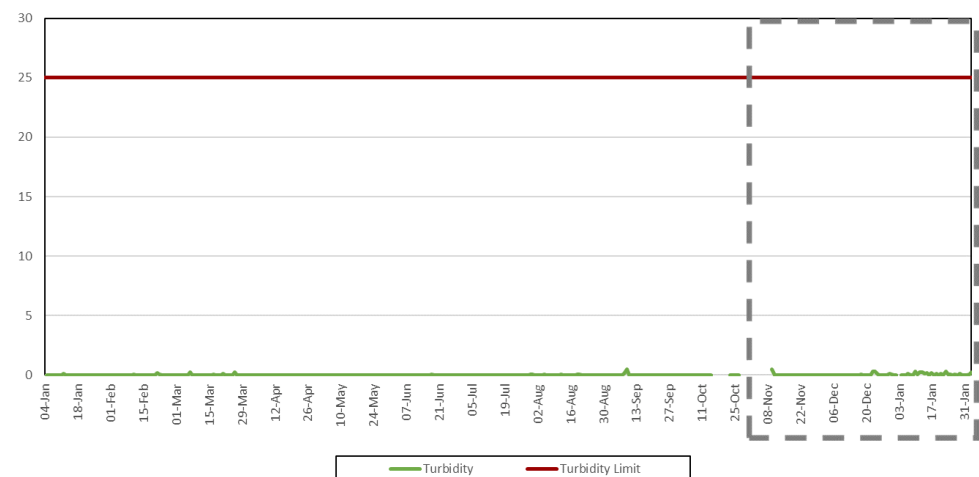
EPA 1 Daily Average pH  
January 2022 - January 2023



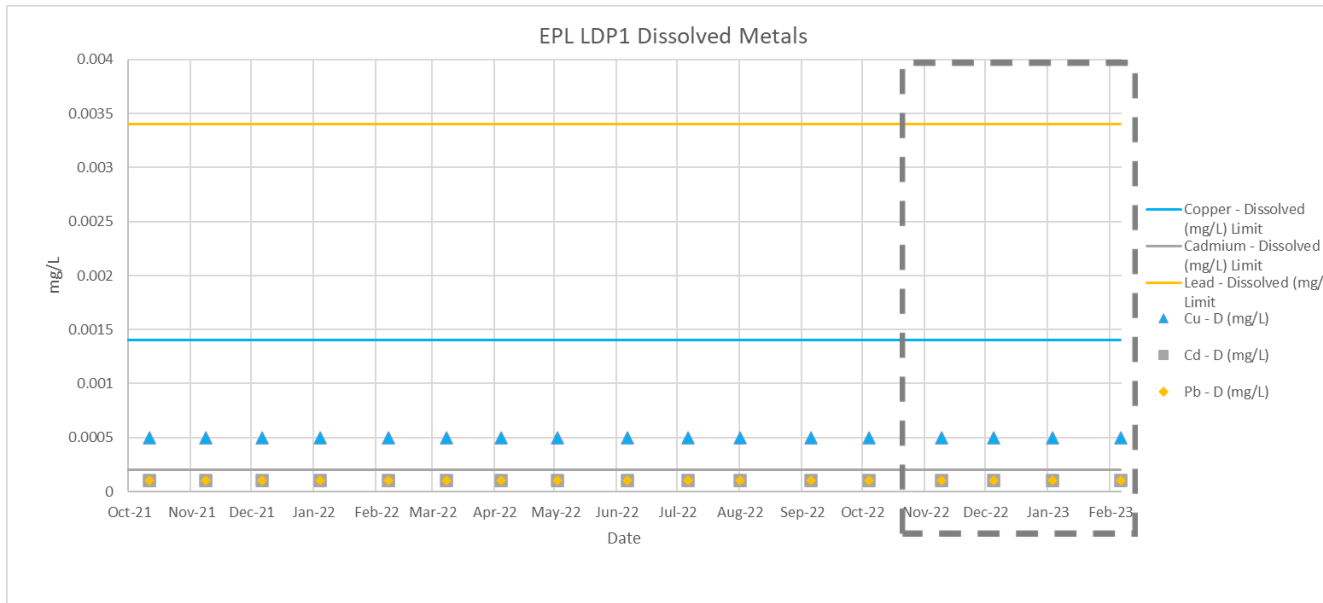
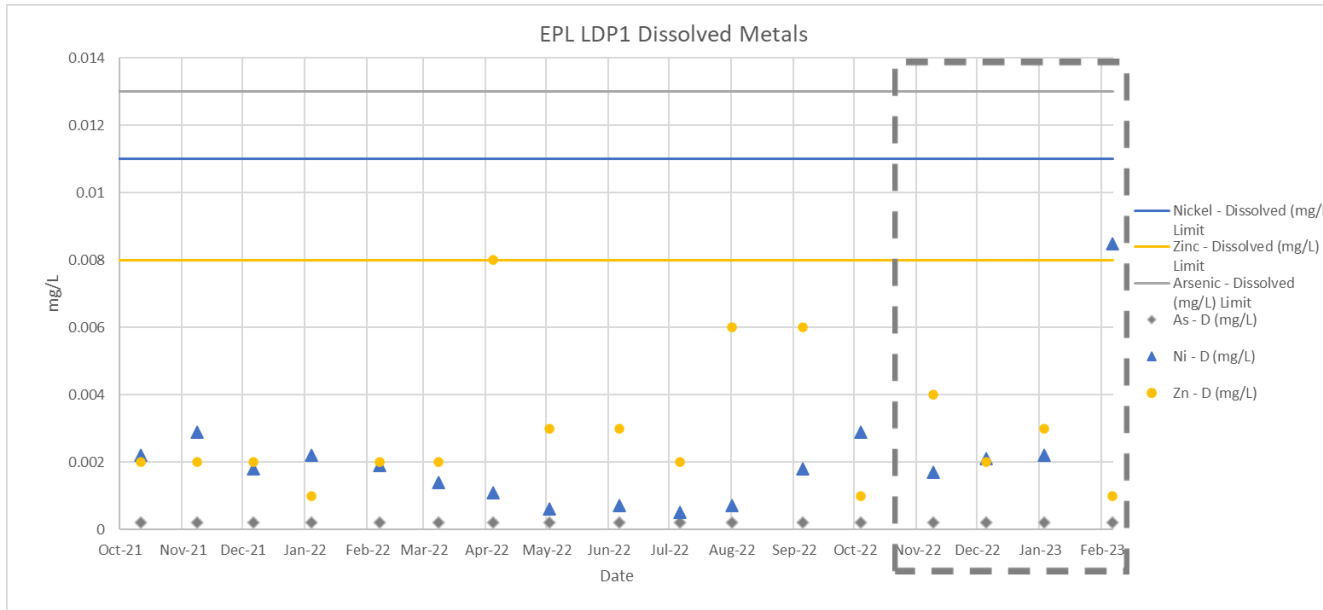
EPA 1 Daily Average EC  
January 2022 - January 2023



EPA 1 Daily Average Turbidity  
January 2022 - January 2023

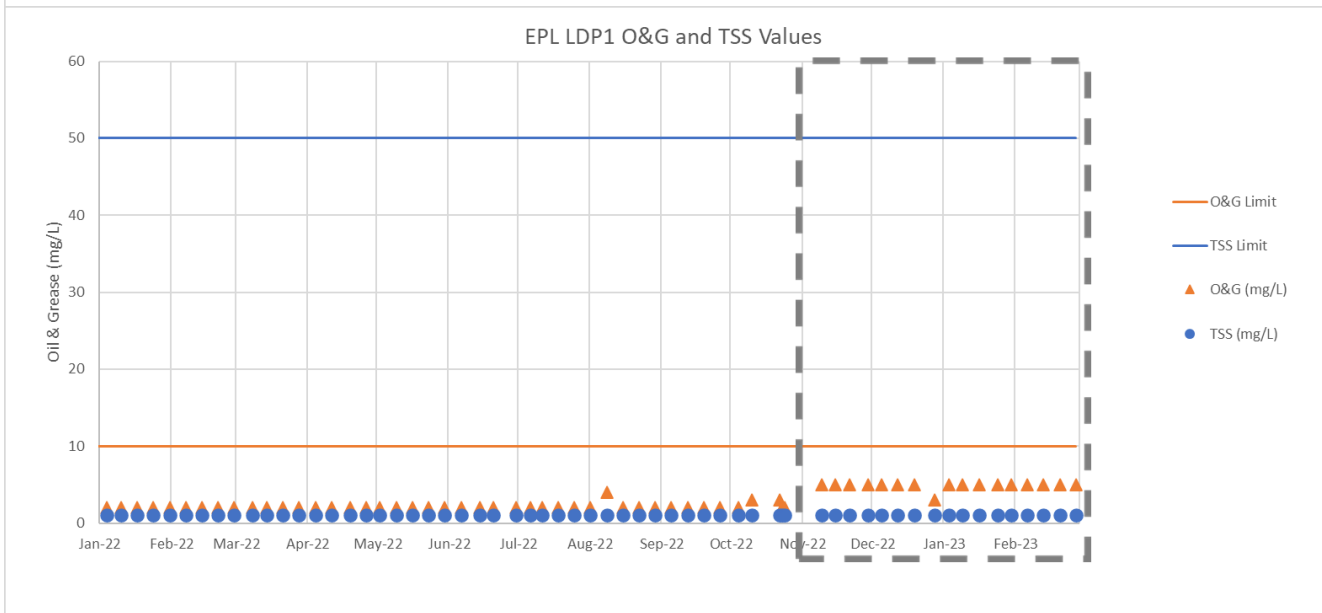
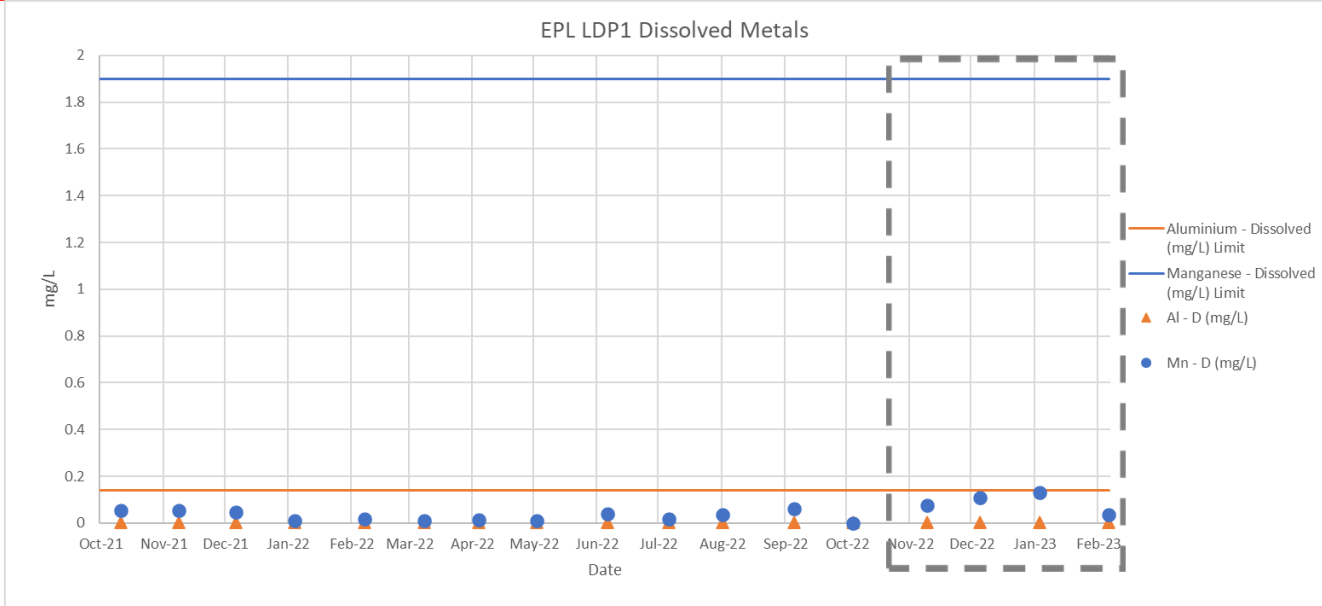


# Water Release – EPA01



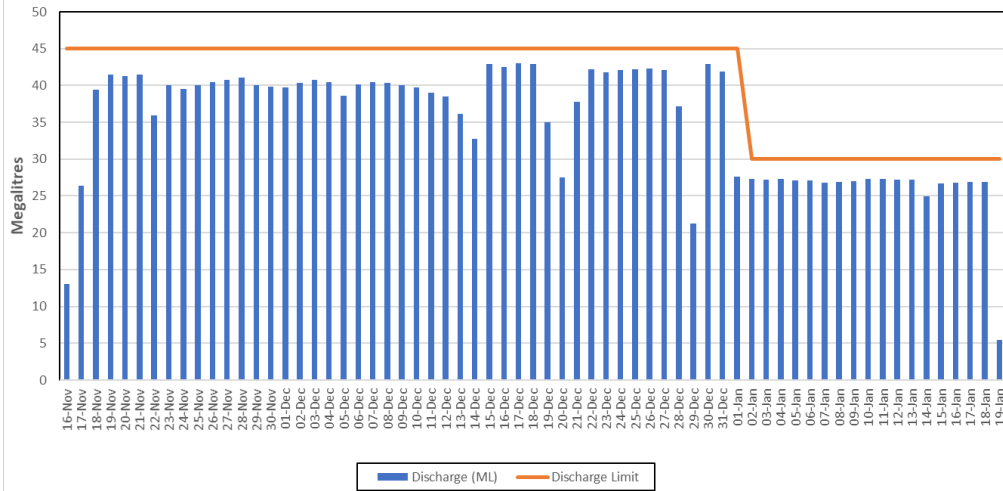


# Water Release – EPA01

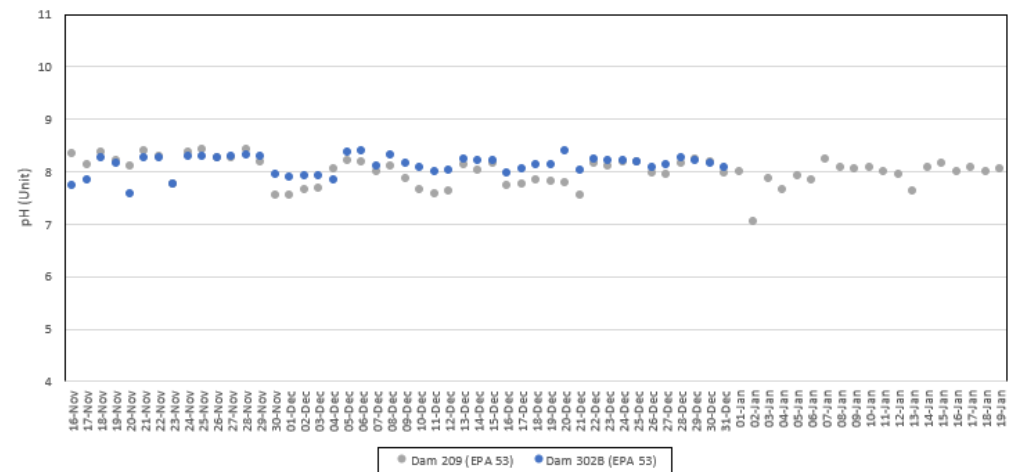


# Water Release – EPA53

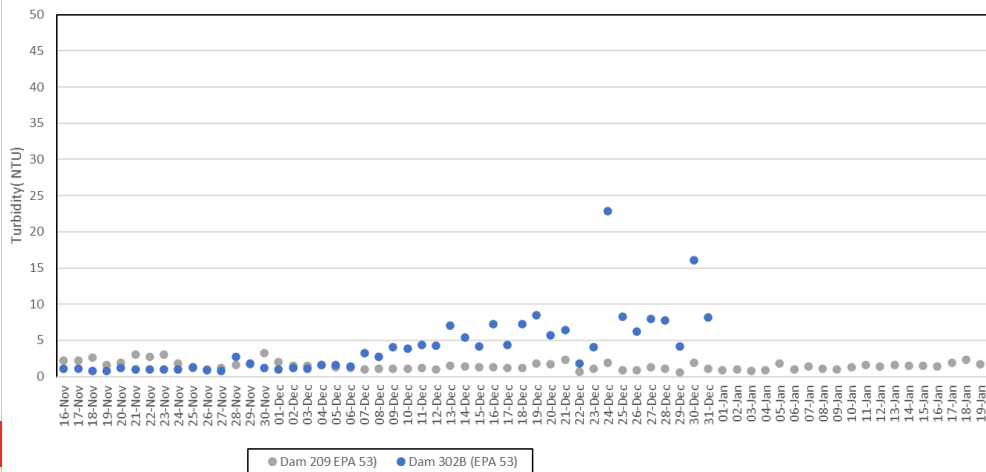
EPA 53 Daily Discharge Volumes



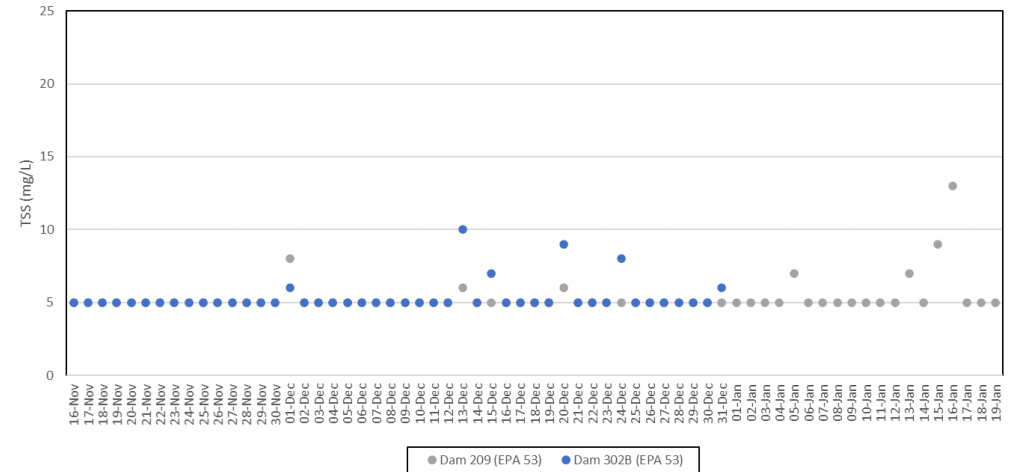
Daily Emergency Release pH (field)



Daily Emergency Release Turbidity (lab)

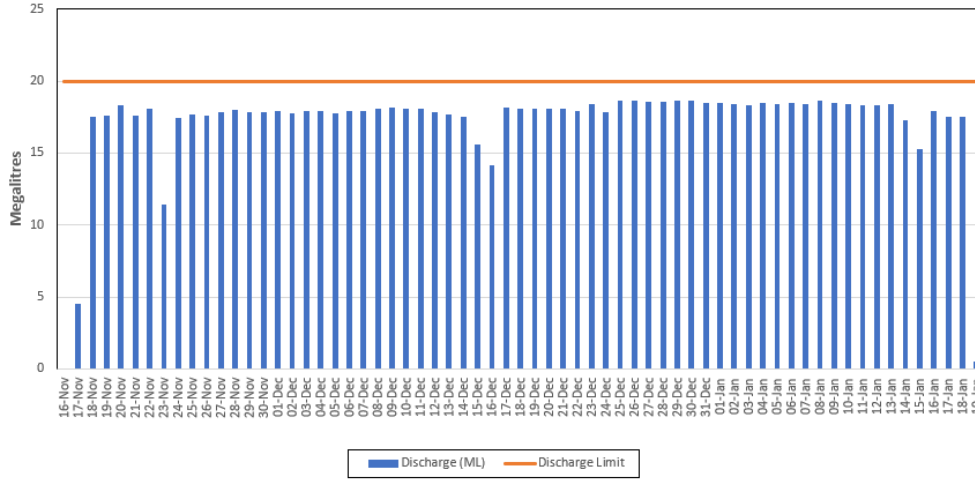


Daily Emergency Release TSS (lab)

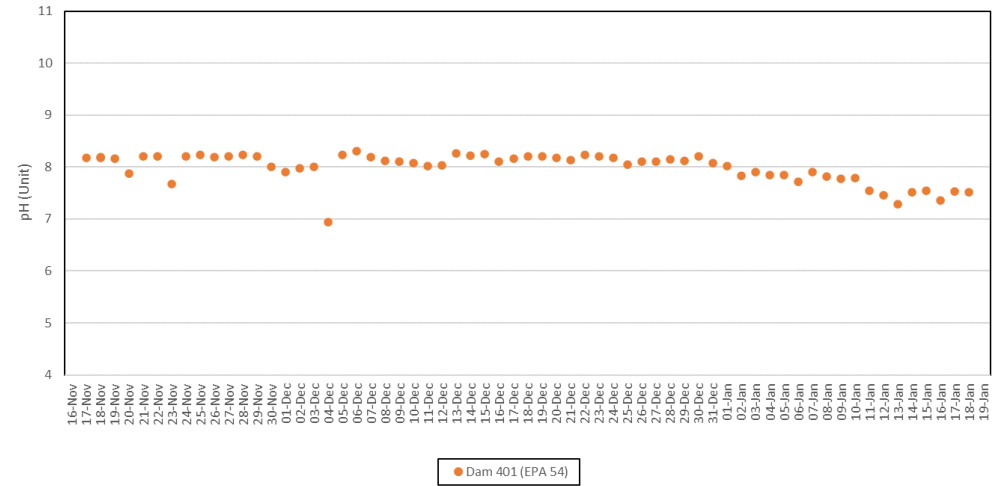


# Water Release – EPA54

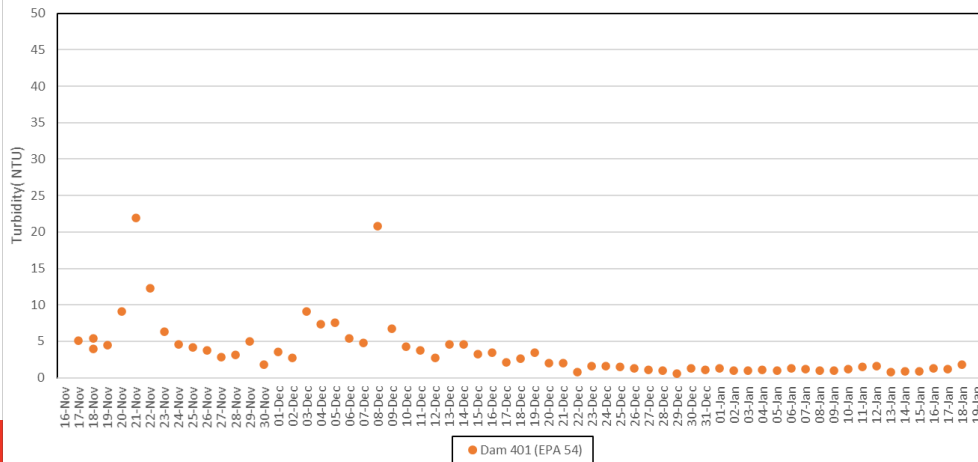
EPA 54 Daily Discharge Volumes



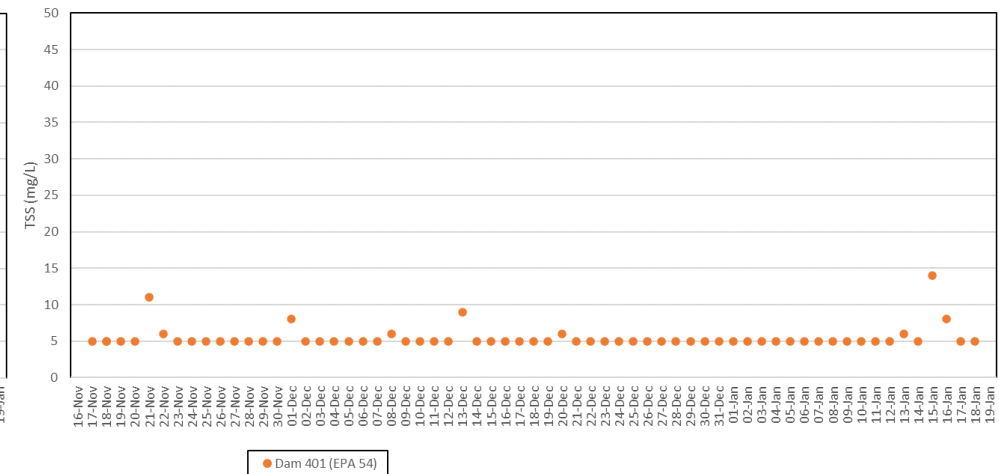
Daily Emergency Release pH (field)



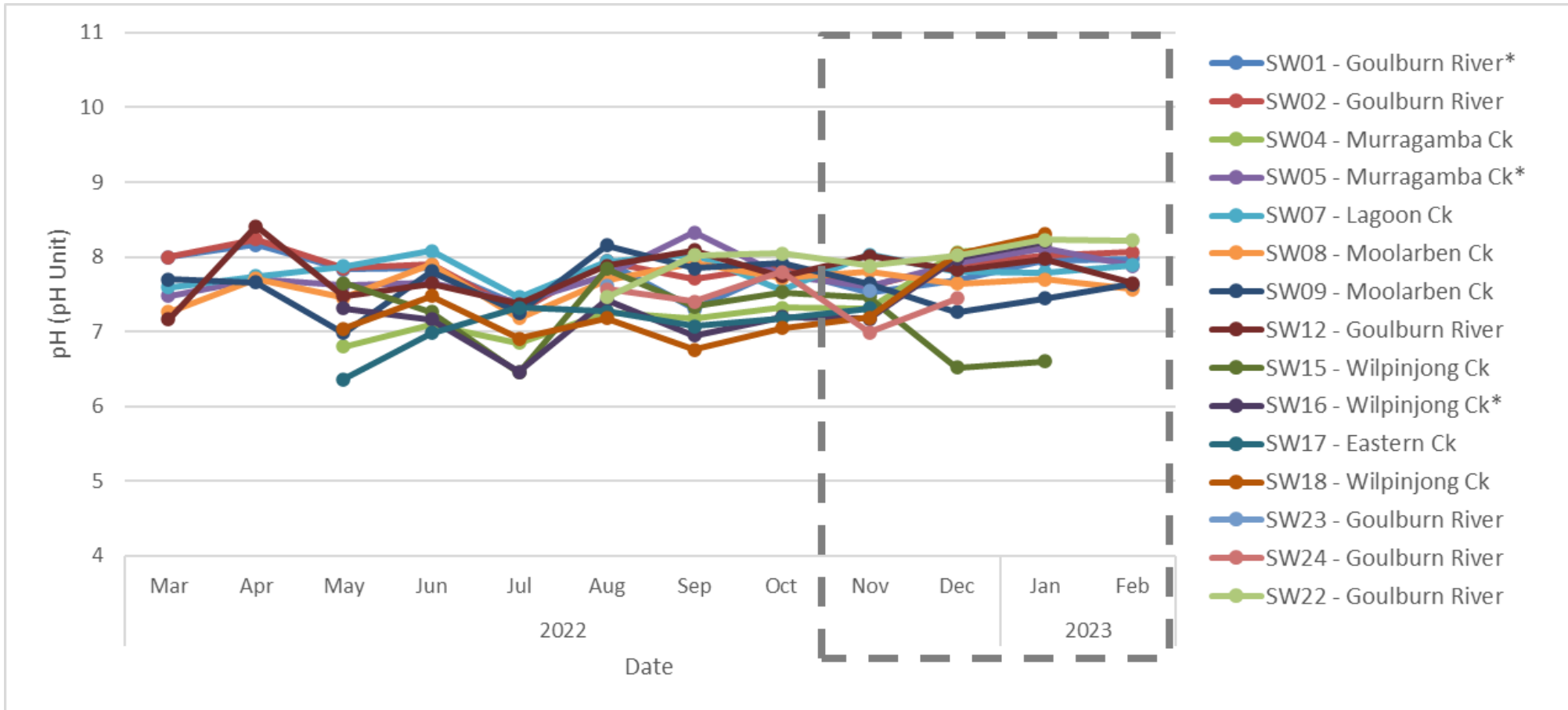
Daily Emergency Release Turbidity (lab)



Daily Emergency Release TSS (lab)

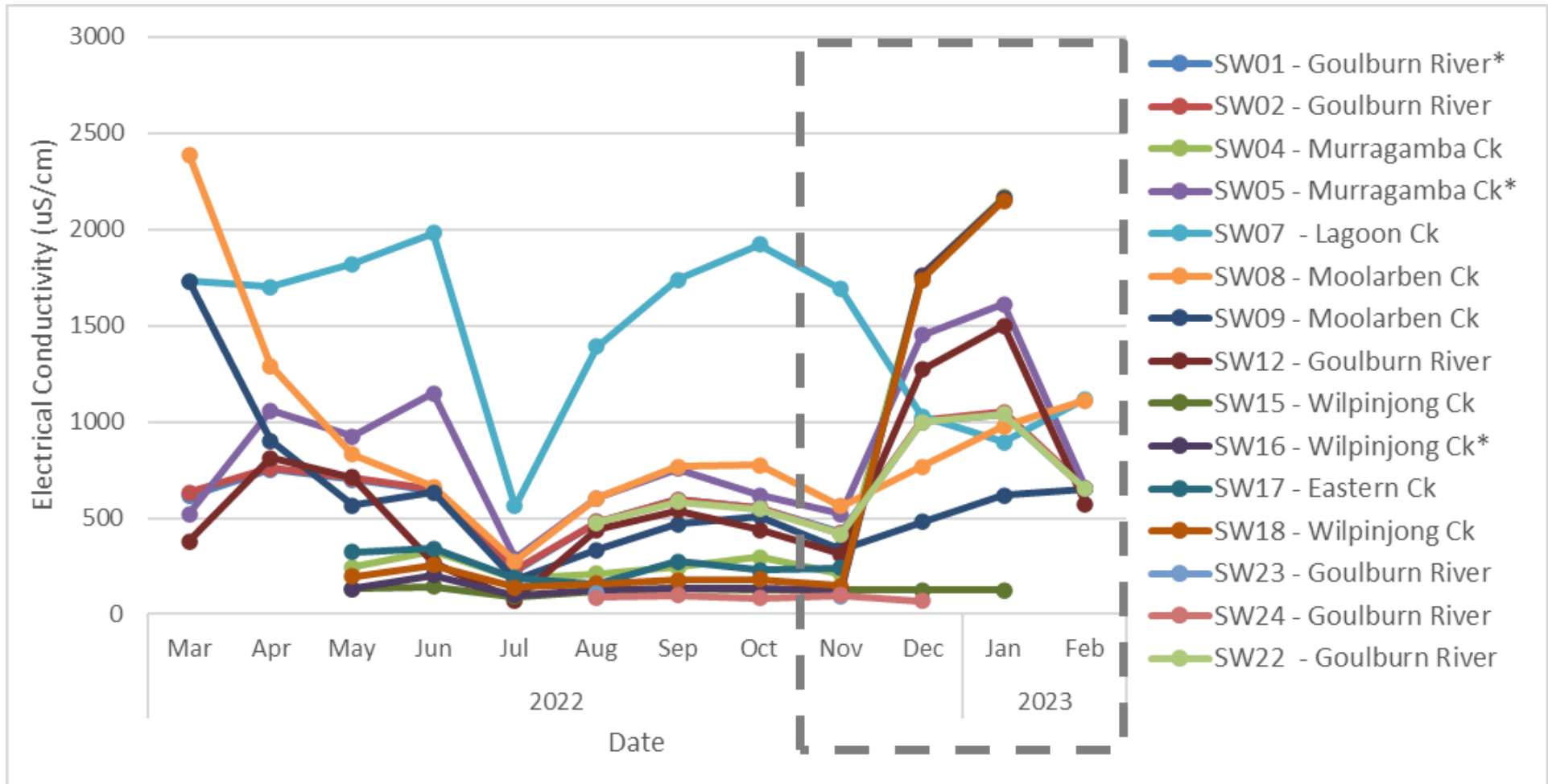


# Water Quality - pH



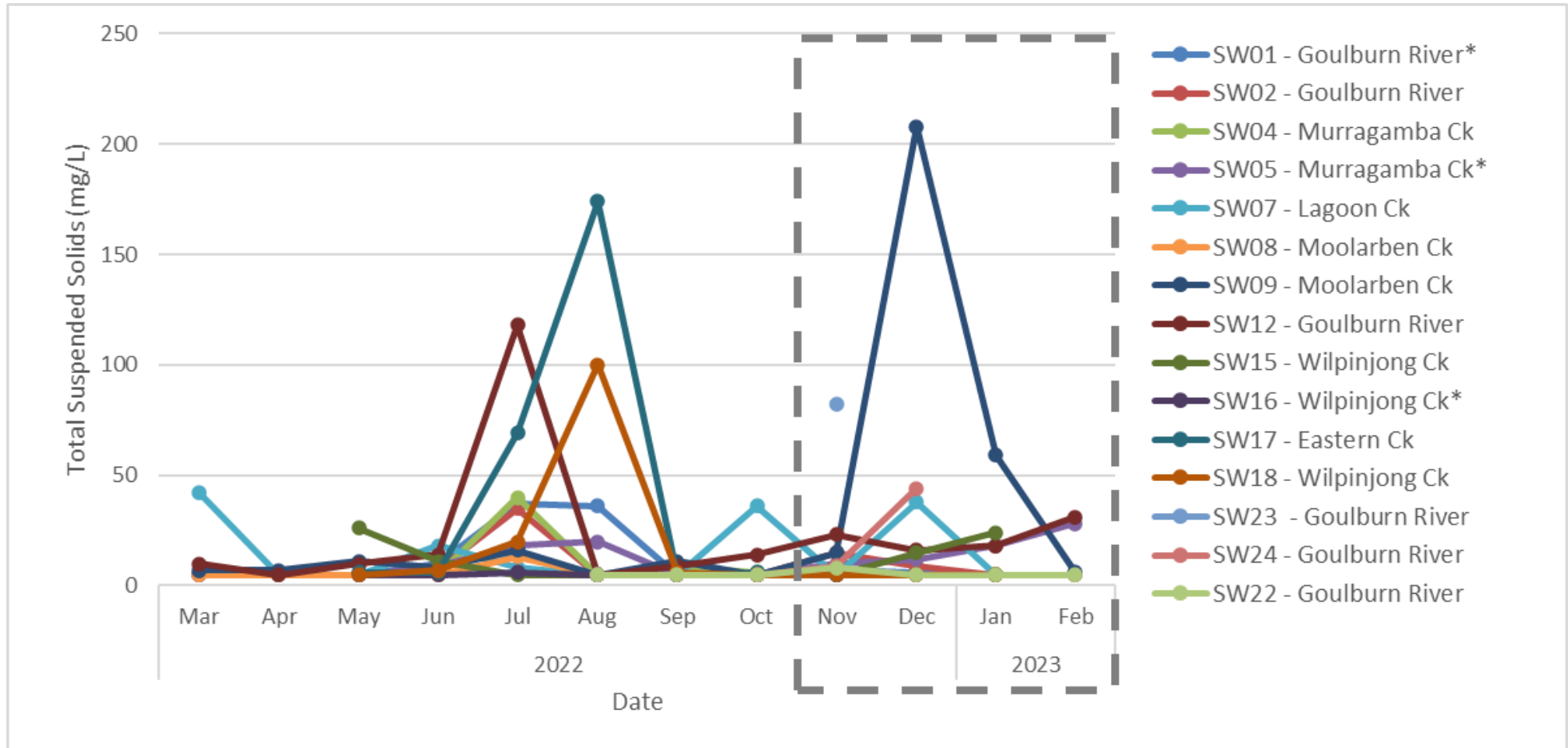
\* Monitoring Locations with associated trigger investigation levels as per the Surface Water Management Plan

# Water Quality - EC



\* Monitoring Locations with associated trigger investigation levels as per the Surface Water Management Plan

# Water Quality - TSS



\* Monitoring Locations with associated trigger investigation levels as per the Surface Water Management Plan

# Air Quality

| Site    | January 2022<br>PM10 Annual Average<br>( $\mu\text{g}/\text{m}^3$ ) | January 2023<br>PM10 Annual Average<br>( $\mu\text{g}/\text{m}^3$ ) | Air Quality<br>PM10 Annual Average<br>Criteria ( $\mu\text{g}/\text{m}^3$ ) |
|---------|---|---|---|
| TEOM 01 | 12.3  | 11.4  | 25.0  |
| TEOM 07 | 8.2   | 6.9   | 25.0  |
| TEOM 04 | 11.5  | 10.7  | 25.0  |

| Site    | January 2022<br>PM2.5 Annual Average<br>( $\mu\text{g}/\text{m}^3$ ) | January 2023<br>PM2.5 Annual Average<br>( $\mu\text{g}/\text{m}^3$ ) | Air Quality<br>PM2.5 Annual Average Criteria<br>( $\mu\text{g}/\text{m}^3$ ) |
|---------|--|--|--|
| TEOM 07 | 4.4  | 3.5  | 8.0  |





Monthly monitoring reports are available on our website:

[www.moolarbencoal.com.au/page/environment/environmental-monitoring/](http://www.moolarbencoal.com.au/page/environment/environmental-monitoring/)

# Noise Monitoring

- All monthly & quarterly attended noise monitoring within criteria.
- Continued implementation of:
  - Planning controls - scheduling
  - Engineering controls - attenuation
  - Operational controls - bunds/screens
  - Real-time monitoring triggers
  - Real-time response protocols

## LEGEND




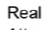
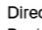
-  Exploration Licence Boundary
-  Mining Lease Boundary
-  Rail Line
-  Watercourse

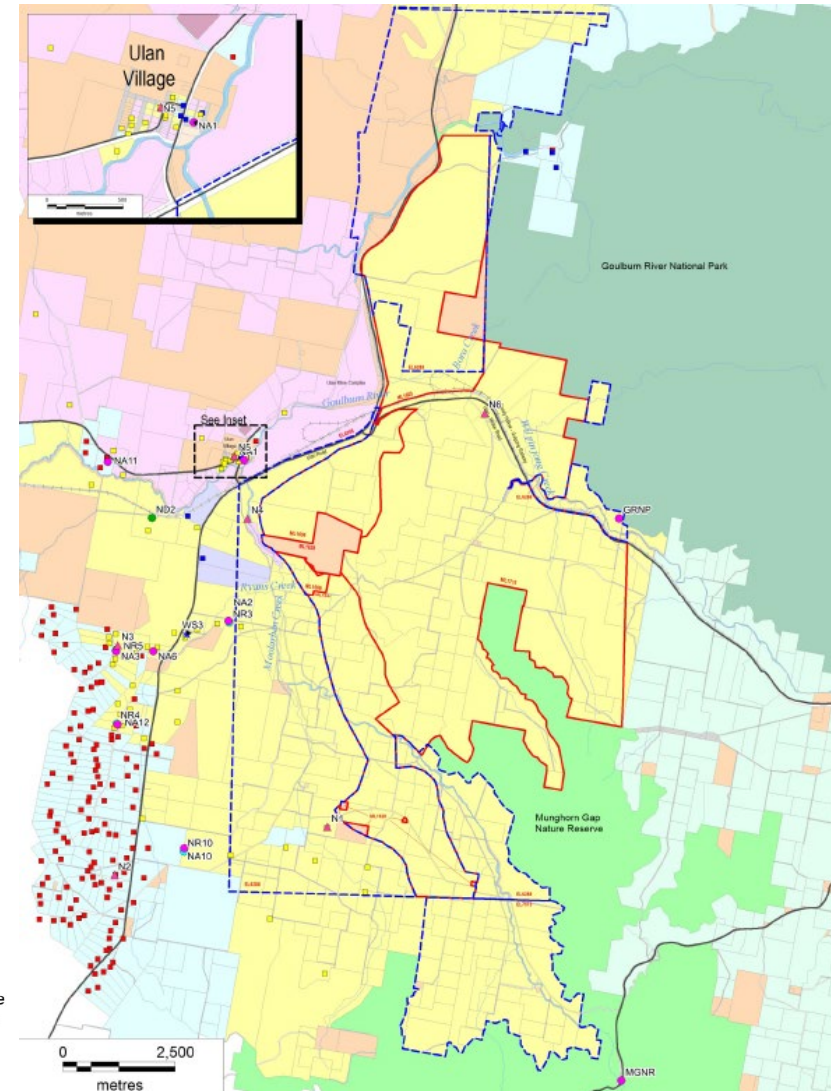
## Ownership

-  Yancoalg
-  Ulan Coal Mines Limited
-  Wilpinjong Coal Mine
-  Privately Owned
-  Crown
-  Commercial

-  National Park
-  Nature Reserve
-  Mine Owned Receiver
-  Private Receiver
-  Commercial Receiver

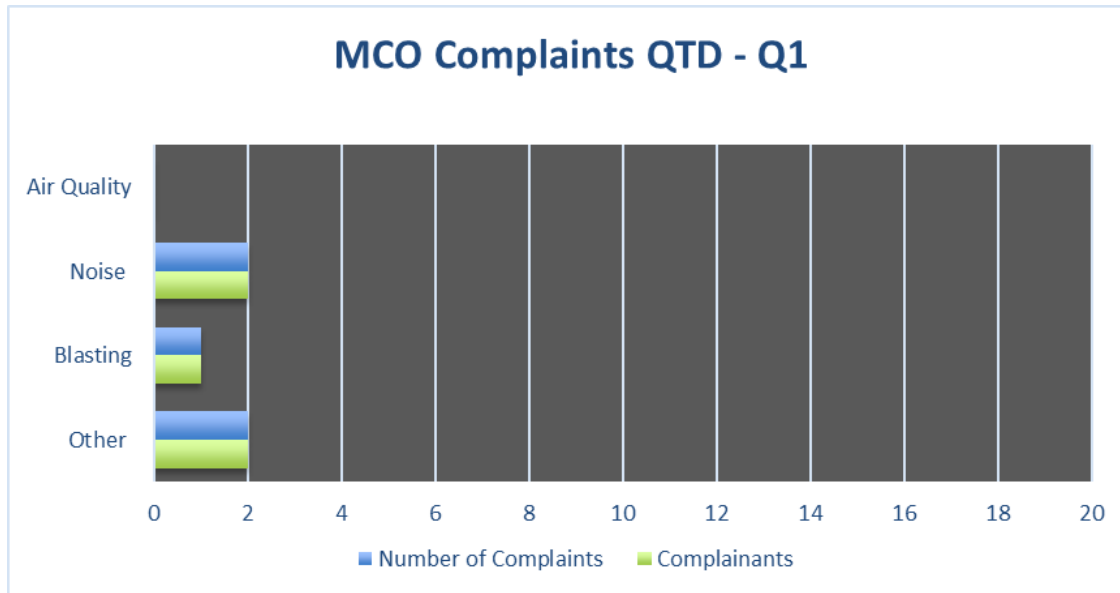
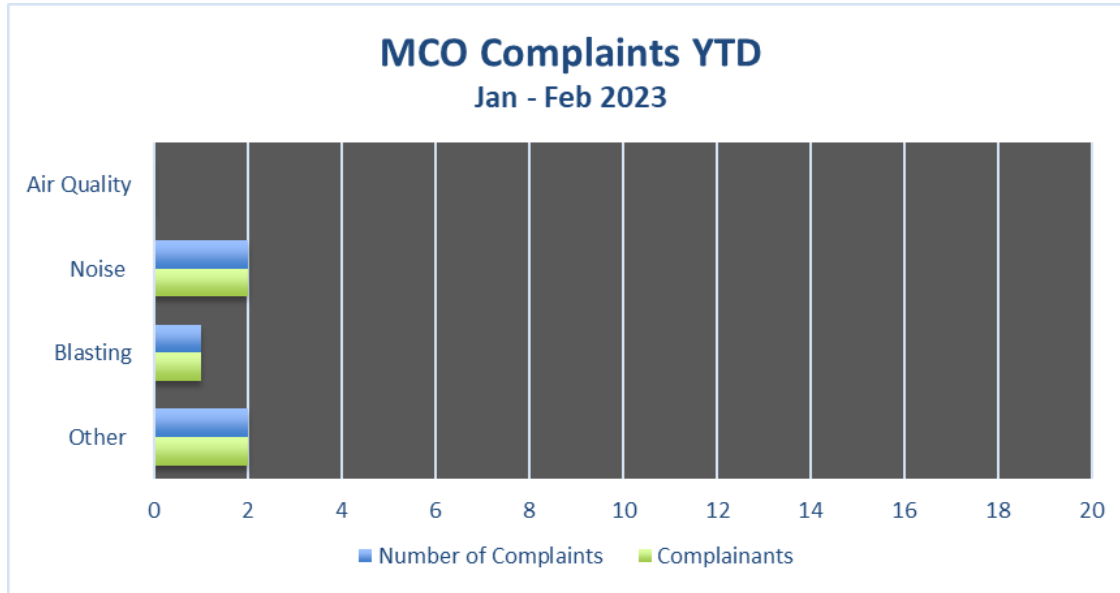
## Noise Monitoring Locations

-  Real-time Noise Monitoring Site
-  Attended Noise Monitoring Site
-  Directional Receiver
-  Background Noise Monitoring
-  Weather Station





# Community Complaints



# Rehabilitation Update

- Rehabilitation maintenance works are continuing
- Preparations for autumn monitoring underway





# Biodiversity Offset Areas Update

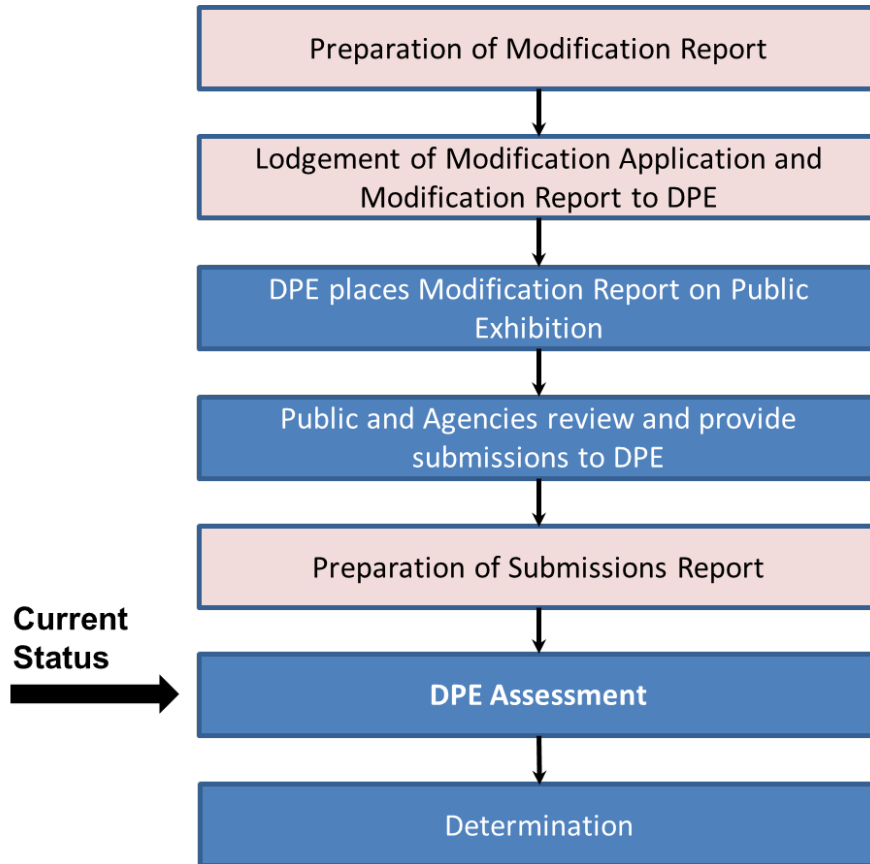
- Works are continuing for Planting program on the Dun Dun, Onsite, Moolarmoo & Redhills Biodiversity Offsets
- 2022 Planting program delayed due to wet weather anticipated to be completed Autumn 2023
- Offset maintenance works have continued.





# UG2 Modification

- Submissions Report lodged with DPE and now available on Planning Portal website.

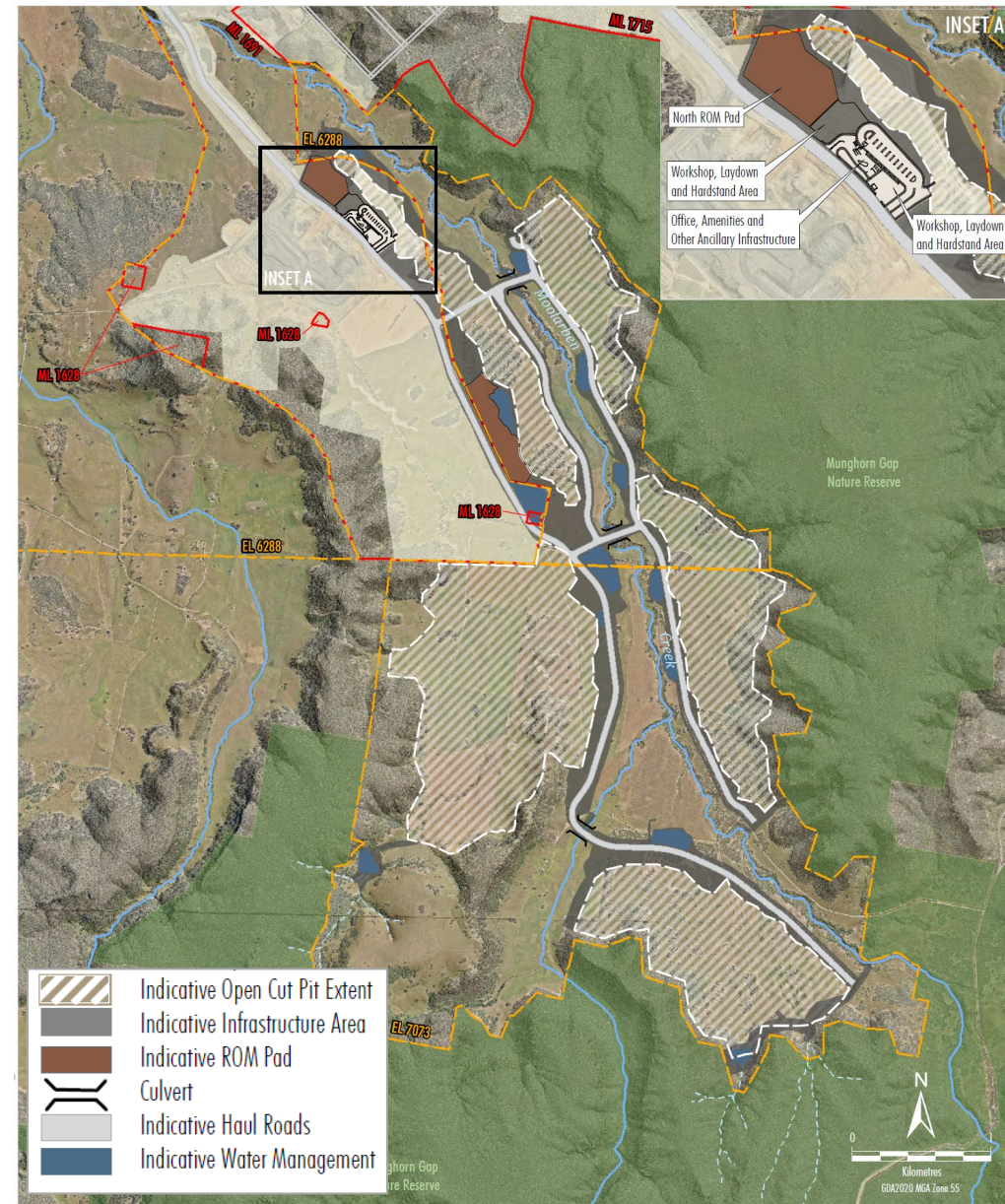




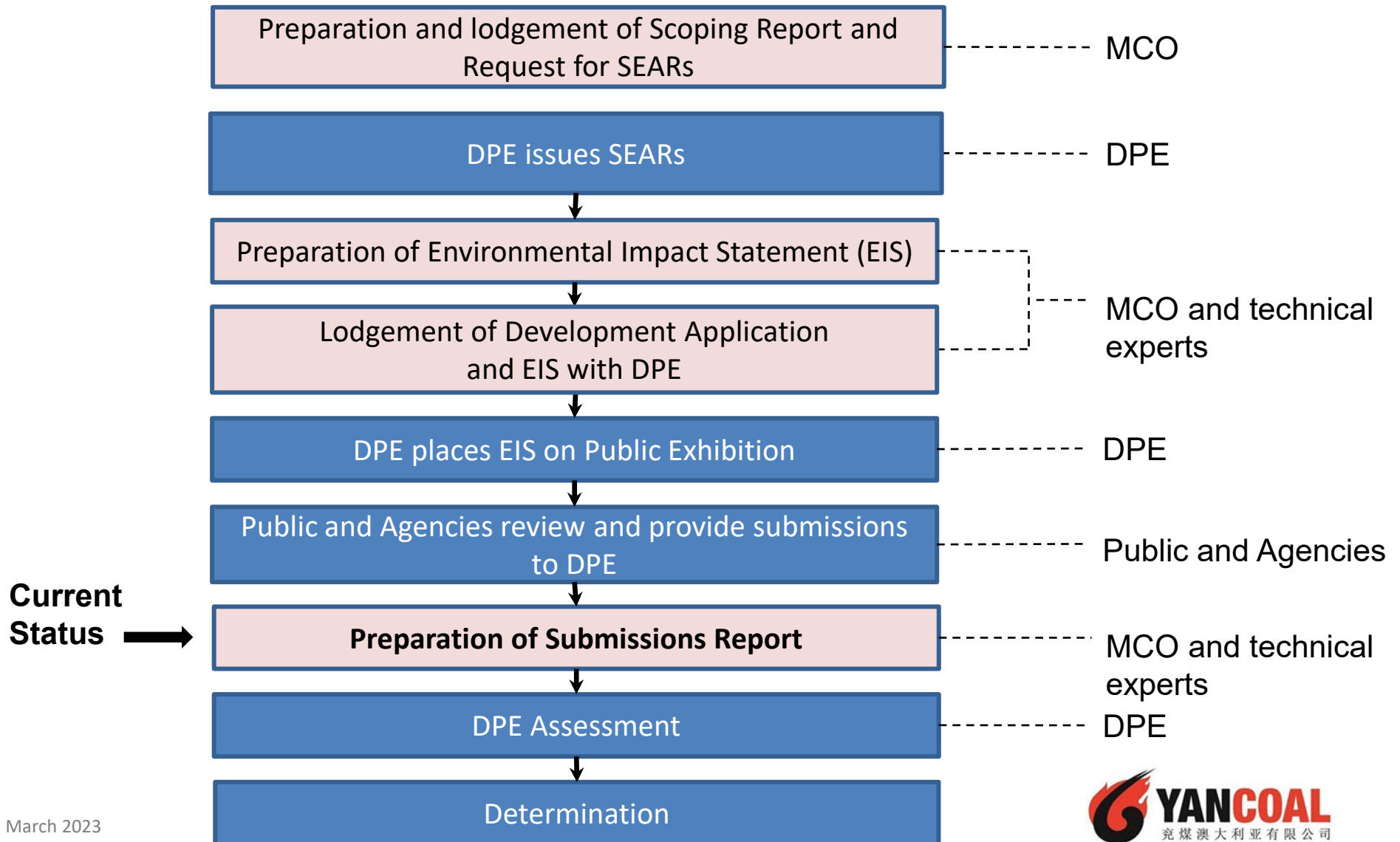
# OC3 Extension Project

## Project Description Overview

- Extension of open cut operations within ML 1691, EL 6288, and EL 7073.
- Extraction of up to 9 Mtpa of ROM coal (which is less than the approved OC3 extraction rate of 10 Mtpa), with a total of approx. 40 Mt over the life of the Project.
- Mining operations between 2025 to 2034.
- Extension of employment of existing open cut workforce.
- Construction and operation of new ancillary and water management infrastructure.
- Construction of haul road creek crossings.



# OC3 Extension Project





# Employment Update

## Current Traineeships

- 51 Trainees currently onsite
  - 21 Underground trainee mineworker
  - 29 Open Cut trainee mineworker, with 2 progressing to a perm position
  - 1 Administration trainee at the Underground

## Apprentices

- 28 Apprentices – 7 Underground, 12 Open Cut and 9 CHPP apprentices.
- 1 Apprentice successfully transitioned to MCO at the end of 2022







7 March 2023

