

**MOOLARBEN COAL OPERATIONS - COMMUNITY CONSULTATIVE COMMITTEE
MEETING No. 65**

Date: Tuesday, 6th June 2023
Time: 1:03 pm
Location: Moolarben Coal Open Cut Administration Board Room, Ulan
Attendance: Independent Chairperson
Lisa Andrews (LA)

Community Members

David Lowe (DL)
Aleshia Lonsdale (AL)
Dr Julia Imrie (JI)
Cr Katie Dicker (KD) – MWRC Delegate

Moolarben Coal Operations

Brian Wesley (BW)
Trent Cini (TC)
Rebecca Shanks (RS)
Emily Scanlon (ES) {Minute taker}

Apologies

David Stokes (DS)
Bev Smiles (BS)
Helen Ungaro (HU)
Mayor MWRC - Cr Des Kennedy (DK)

Meeting 65 Agenda and Presentation were provided to all meeting attendees.

1. Introduction and Welcome

Lisa Andrews (LA) opened the meeting and welcomed all attendees to the Moolarben Coal Operations (MCO) Community Consultative Committee (CCC).

LA advised there are no changes to the declarations by the CCC members. LA introduced Emily and informed the CCC that Emily's declaration had been received.

2. Apologies

David Stokes (DS)

Bev Smiles (BS)

Helen Ungaro (HU)

Mayor MWRC - Cr Des Kennedy (DK)

3. Business Arising from Previous Finalised Minutes

LA confirmed previous meeting minutes finalised and distributed on 31 March 2023.

TC informed the members that the previous action items would be addressed during the presentation.

Actions from Meeting 64:

1. Declaration form – Kieran to LA. [Complete](#)
2. Provide CCC Members further information regarding the deterrent trialled in offset plantings. [Complete](#)

Correspondence as sent with the Meeting Notice on 23/05/23 with additional items:

- 23/3/2023 – Email from MCO with completed Declaration Form from Kieran Stephenson-Banks. Acknowledged.
- 23/3/23 – Email to members with draft minutes for review as well as groundwater data requested by JI.
- 03/04/23 – Email to members with final minutes.
- 23/5/2023 – Email to members with the Meeting Notice & Agenda for this CCC.
- 25/5/23 – Email from JI requesting groundwater data and a copy of the 2022 Annual Review.
- 3/06/2023 – Email from TC advising that 2022 Annual Review is now available on the project website. Information forwarded on to members.
- 4/6/23 – Email from JI with request for extracted information from the AR.
- 5/6/ 2023 – Email to members reminding them of the meeting.
- 6/6/2023 – Email from MCO with completed Declaration Form from Emily Scanlon. Acknowledged.

CCC Update Presentation

RS welcomed CCC members and provided an update on the 2023 Community Support Program (CSP) and Community Events since the last meeting.

RS provided an operations update for the opencut including the Environmental Protection Licence (EPL) Variation (License No. 12932).

Jl queried the discharge volume and conductivity limits of the EPL Variation. TC advised the EPL variation included amendments to the release volume and conductivity limit at discharge point 1, with limit of 20 ML/day and conductivity limit of 619 $\mu\text{s}/\text{cm}$. TC added the changes were approved by the NSW Environmental Protection Authority (EPA) following a review of the *Independent Water Quality Study (IWQS)*. Jl requested a copy of the IWQS. TC advised the report would be provided to the CCC once the NSW Department of Planning and Environment (DPE) are satisfied with the report (**Action 1**).

Jl queried the Project Approval conditions. TC advised the Project Approval includes the condition to complete an Independent Water Quality Study, in consultation with EPA and to the satisfaction of the Secretary. DL asked if the IQWS testing was completed inhouse by MCO or independently. TC advised the testing was completed independently by the University of Queensland. DL asked if any of the MCO's testing is completed by a local business. TC stated this specific sampling was completed by experts who were not local, however some of the regular testing undertaken at MCO is completed by a local laboratory.

TC provided a response to Jl's provided questions, including provision of the request monitoring data. TC stated MCO does not store leachate on-site in mine water dams. Jl clarified her question and asked what volume of brine is held on-site. TC advised we currently have approximately 300 megalitres (ML) of brine on-site within MCO's brine water dams, the conductivity of these dams generally ranges from 2,500-3,500 $\mu\text{s}/\text{cm}$. TC added that current, average underground mine water make is approximately 16 ML/day including water supply, inflows, and recirculation.

RS provided an update on MCO's underground operations. TC discussed the progress of the groundwater monitoring bores above UG4. Jl asked if there were results for PZ195 and if it was installed as a standpipe. TC advised PZ194B, PZ194C, PZ195B and PZ195C were standpipes constructed near the previously installed vibrating wire piezometer (VWP) locations PZ194 and PZ195. TC explained the differences between the standpipe piezometer and VWP. Jl requested the data for the groundwater monitoring bores PZ-B, PZ-C and PZ-D. TC advised the groundwater monitoring bores are stabilising and MCO will provide the data once the data has been verified (**Action 2**). Jl agreed the data can be misleading before the bores are stabilised.

RS provided an update on exploration. Jl queried the drilling location in EL6288. TC clarified the specific location to the south.

RS provided an update on environmental monitoring.

Jl asked where the surface water samples for Discharge Point 1 are collected. TC advised the Discharge Point 1 sample is collected from the release line, prior to release. TC explained the continuous monitoring system MCO uses to manage treated release water via Discharge Point 1.

Jl queried if oil and grease were tested during emergency discharge and if there were concentration limits on the discharge. TC responded testing was not required at Discharge Point 53 and Discharge Point 54 for oil and grease during the emergency release and there were no concentration limits. Jl asked if the discharge report provided to the EPA will be made available to the CCC. TC advised similar information is provided in the 2022 Annual Review (AR).

Jl commented that she was puzzled that monitoring for salinity (EC) was not required under the emergency discharge. TC confirmed that EC was not required to be monitored under the Environmental Protection License for discharge points 53 and 54. TC advised MCO completed all testing that was required by the EPA for the emergency discharge.

DL queried what might cause fluctuations in the Discharge Point 1 pH values. TC advised the fluctuations in pH are likely associated with water blending and the use of daily averages. TC confirmed the pH results are within the criteria.

KD queried the trend displayed on the oil and grease graph. TC explained the laboratory limit of reporting was changed from <2 mg/L to <5 mg/L, there were no reported exceedances.

RS provided an update on surface water quality, air quality, and noise monitoring which were completed and compliant with the relevant approved management plans.

Jl asked if MCO completed blasting on Friday, 26th May 2023 around 12:00pm as she heard a very loud explosion from her property. TC advised MCO would check if a blast was fired on that day by MCO (**Action 3**). Jl noted there has been much more noticeable mine noise in the morning since the change in seasons. Jl queried the “commercial receiver” reference on the noise monitoring figure relating to their cottages and requested this be changed to “private receiver” as these are occupied residences, one now full time and they are not the same as the two other marked commercial receivers, Orica and the cement works. TC advised the reference does not affect the Project Approval noise limits and will investigate the historic classification of the cottages as “commercial receivers” (**Action 4**).

Jl noted that no noise monitoring by MCO is taking place north of the mine and that noise should be monitored to ensure surrounding residents are considered. TC advised MCO undertakes noise monitoring in accordance with the approved Noise Management Plan and maintains a real-time noise and dust monitoring system including Mining Production Environmental Assistants to respond to alarms.

DL asked where the weather stations are located on-site. TC advised the locations of MCO’s weather stations. DL queried if the weather stations information could be made public as it may help the agriculture and horticulture industries in the community. TC advised he would be happy to discuss this further.

RS provided an update on community complaints.

RS provided an update on rehabilitation. KD asked the expected timeframe for regeneration. TC discussed the rehabilitation stages. TC provided further detail regarding the biodiversity offset credit system and the final land use.

RS provided an update on MCO’s biodiversity offsets including the successful trial of the egg-based deterrent used on the seedlings.

TC provided an update on the UG2 modification and noted the responses are expected to be available on the DPE website.

TC provided an update on the OC3 extension project and noted MCO will advise the CCC when the submission report is available (**Action 5**).

RS provided an employment update and noted there are 63 trainees currently on-site. DL acknowledged the positive outcome Try-a-Trade has had on the local community.

TC offered a copy of the 2022 Annual Review (AR) to the CCC. RS provided a summary of the 2022 AR and discussed activities during the reporting period. Jl noted MCO produced less product than licensed. BW advised the shortage was a result of heavy rain fall in the open cut and staff shortages in the underground.

RS provided an update on 2022 AR noise, blasting, and air quality.

RS provided an update on 2022 AR water, stream health, and channel stability. Jl asked if the discharge volume included the emergency discharge volume. TC confirmed.

Jl queried the discharge data in the 2022 AR. TC clarified the dam data tables were separate whereas the graph displayed both as they were pumped into a single discharge point. Jl acknowledged the response clarified the question.

Jl asked if MCO monitors channel stability downstream of the mine on the Goulburn River. RS advised channel stability is not currently monitored downstream, however, the UG4 Extraction Plan requires inspection of the Goulburn River.

RS provided an update on 2022 AR groundwater monitoring and advised no groundwater level investigations were triggered during the reporting period.

Jl advised the current MCO UG4 Water Management Plan (July 2022) provided new trigger levels for monitoring piezometers PZ105, PZ129 and PZ101, however, the 2022 AR contains the superseded trigger levels. TC acknowledged the error and advised that monitoring has been completed in accordance with the current Approved MCO Water Management Plan trigger levels.

RS provided an update on the 2022 AR mine subsidence and rehabilitation.

RS provided an update on the 2022 AR incidents, non-compliances, and complaints and noted noise was the primary issue of concern.

RS provided an update on the 2022 AR community engagement and support which included positive contributions in education, and donations and sponsorships across 44 local groups and organisations.

TC addressed Jl request for the 2022 AR Groundwater data. TC advised MCO is unable to provide raw data, however, MCO can update the tables to include headers on each page as requested and provide the approved data in a pdf report (**Action 6**).

4. General Business

LA asked if there were any general business updates to discuss.

DL provided an update on the mites they are trialling to control the St John's wort. DL advised the trial will go for about 6-months and will then provide an update to the CCC. DL advised he will provide contact details of the supplier to the CCC (**Action 7**).

5. Next Meeting: 5th September 2023, on site at 1:00pm.

Meeting closed at 2:28pm with LA thanking members for their attendance.

Action Items:

Item	Action	Responsibility
1	MCO to provide a copy of the IWQS to the CCC once DPE are satisfied	MCO
2	Provide data to Jl from monitoring bores PZ-B, PZ-C and PZ-D once data is verified	MCO
3	Advise CCC if MCO fired a blast on Friday, 26 th May 2023 at approximately 12:00pm	MCO
4	Investigate the historic classification of the stone cottages as "commercial receivers"	MCO
5	Advise the CCC when the submission report for the OC3 extension is available	MCO
6	Provide the 2022 AR Groundwater table with heading on each page as a pdf report	MCO
7	Provide supplier information to the CCC on the St John's wort mite	DL

Community Consultative Committee Update

June 2023

Moolarben Coal Operations



2023 Community Support Program (CSP)

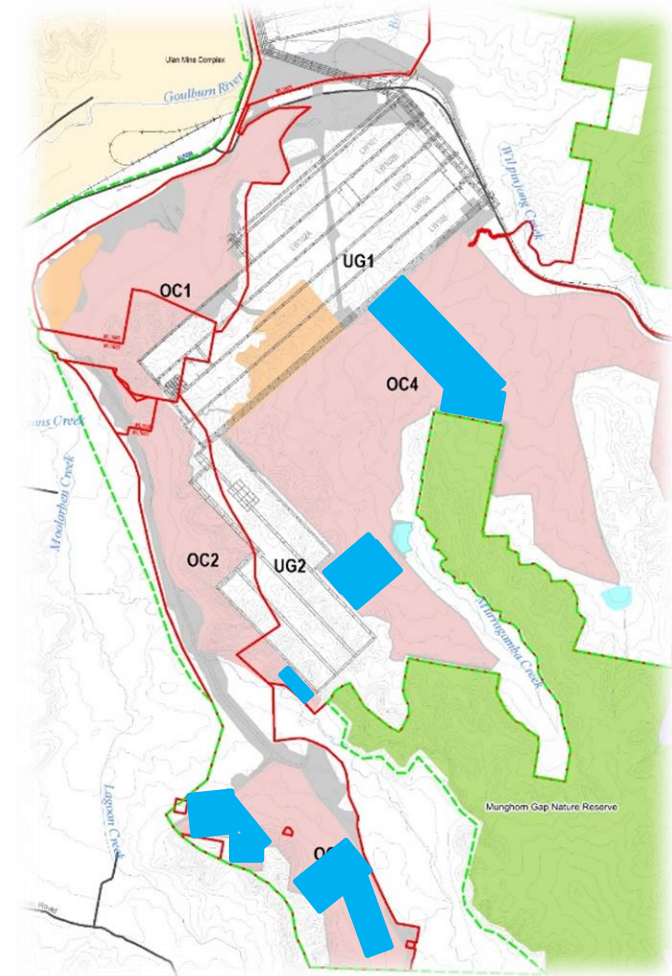
Yancoal-Moolarben Coal CSP Events during 2023 included:

- Mudgee Mountain Bike Club – Skills Training
- Cudgegong Cruisers – Can Cruise 2023
- Mudgee Preschool – Educational Presentations



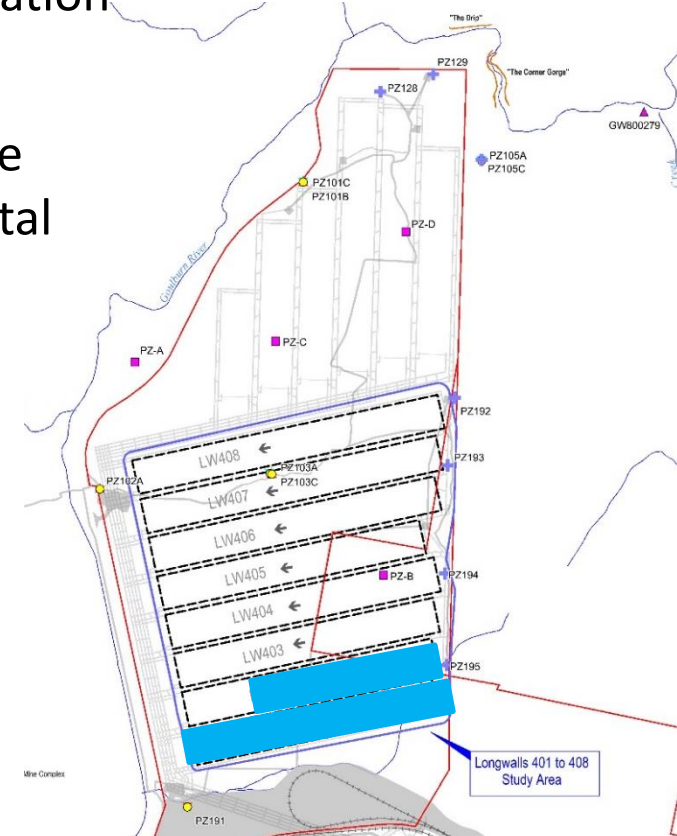
Operational Update - Opencut

- Open cut operations in OC2, OC3 & OC4.
- WTP continue as required
- EPL Variation for LD01
- IWQS subject to DPE approval



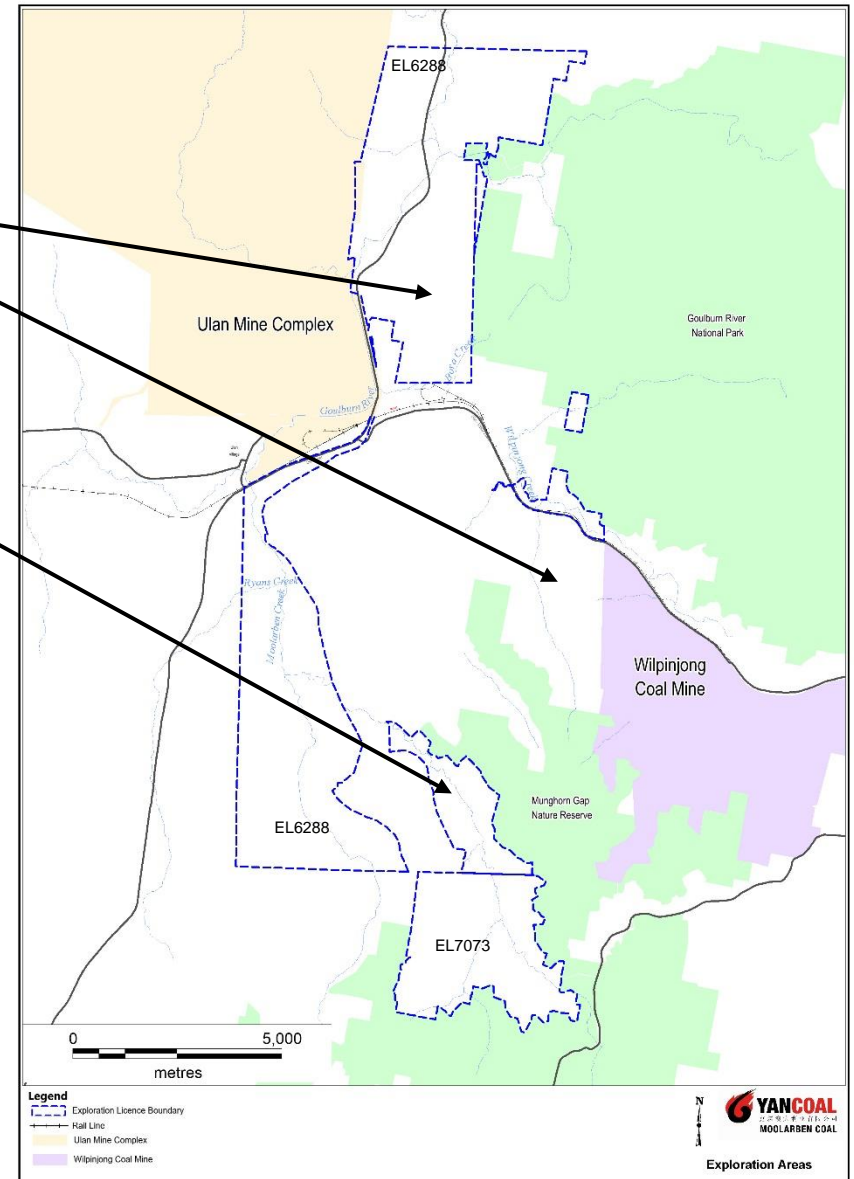
Operational Update - Underground

- Longwall operations in LW402
- Continued underground development in UG4.
- UG4 EP continued Implementation
 - Global Navigation Satellite System (GNSS) Array installation on going
 - Establishment of environmental monitoring sites in the Goulburn River National Park – Review of Environmental Factors is currently under review by NPWS
 - Groundwater Monitoring
 - PZ194 and PZ195– complete
 - PZ – A – planned for 2023
 - PZ – B – complete
 - PZ – C – complete
 - PZ – D – complete
 - PZ – E – planned for 2023
 - PZ – F – planned for 2023



Exploration Update

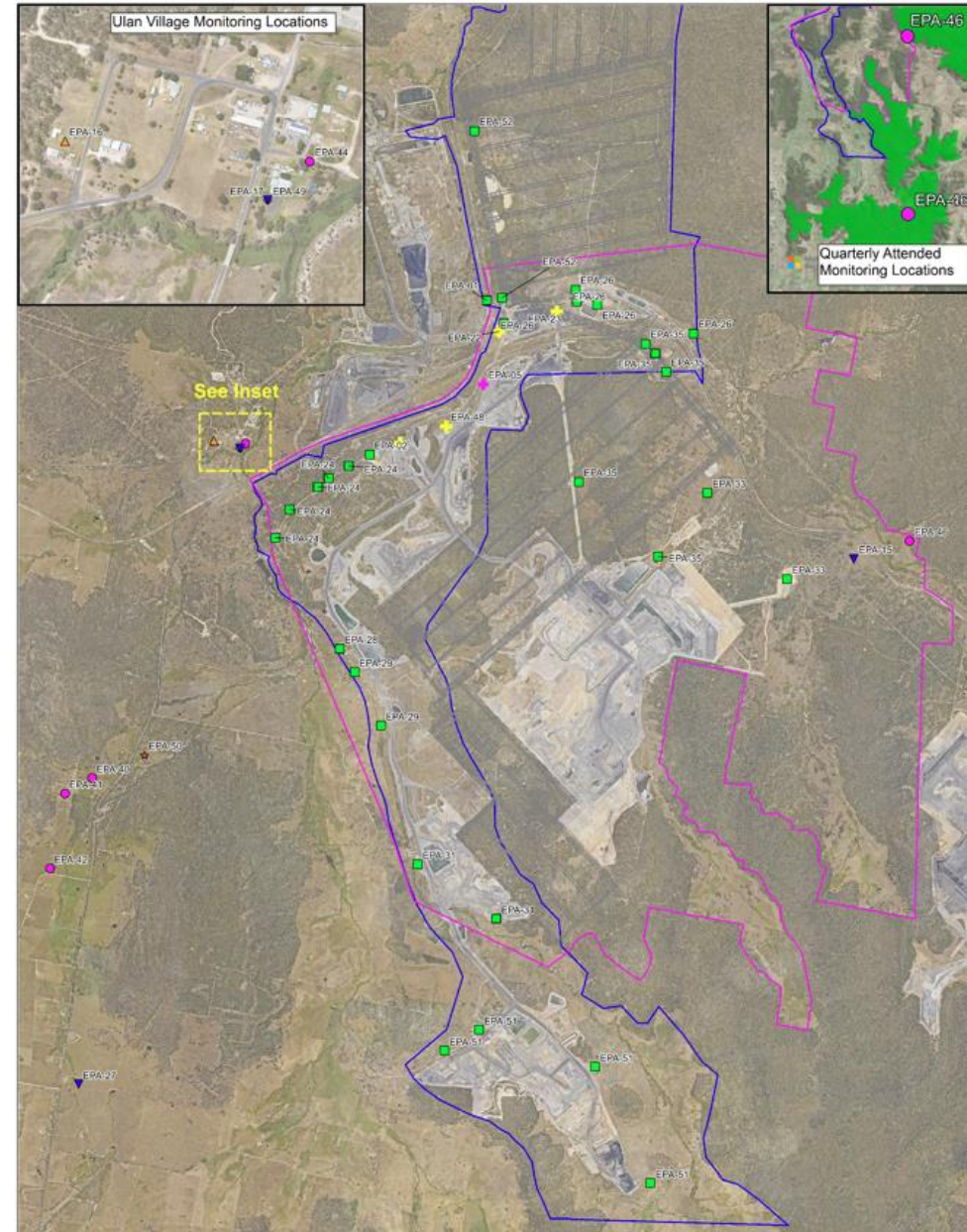
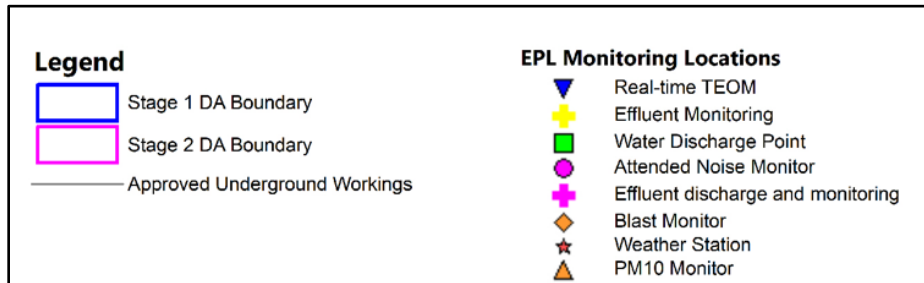
- Drilling – Planned to continue in ML1605 and ML1715
- Drilling is planned to continue in EL6288
- Rehabilitation and monitoring activities have continued during the period.



Environmental Monitoring

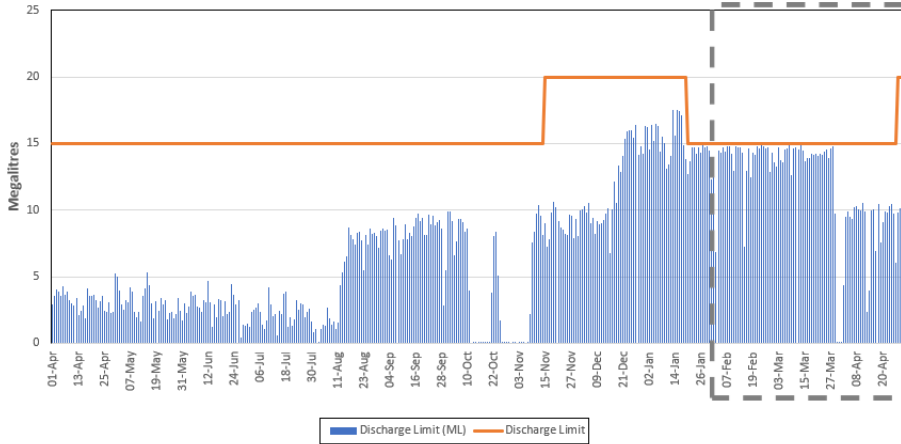
Monitoring network

- Water;
- Air Quality;
- Blasting;
- Noise; and
- Meteorology.

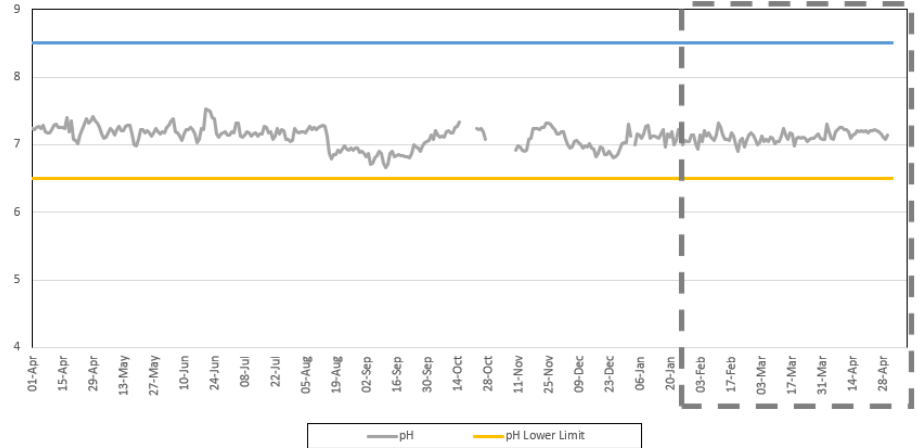


Water Release – EPA01

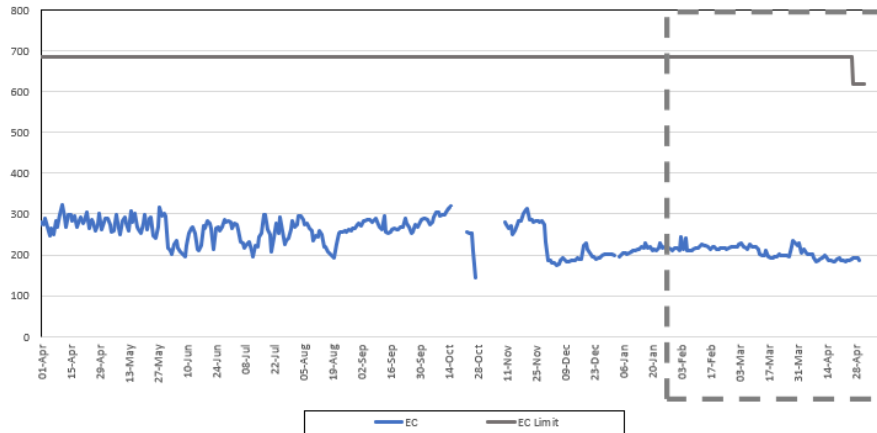
EPA 1 Daily Discharge Volumes
April 2022 - April 2023



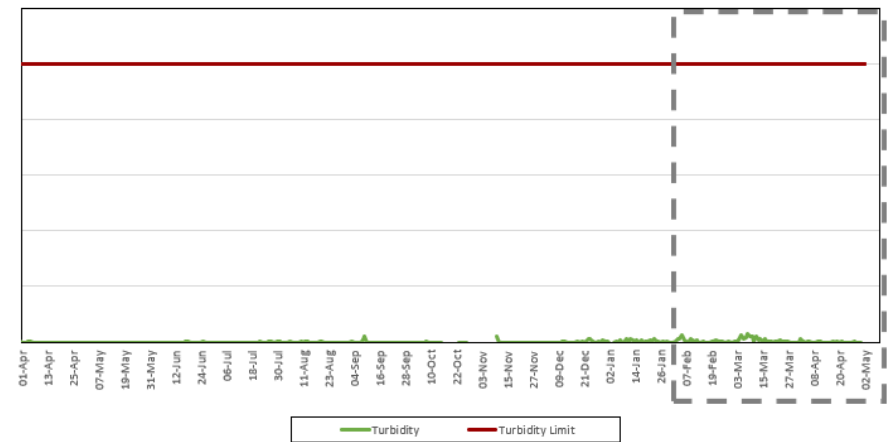
EPA 1 Daily Average pH
April 2022 - April 2023



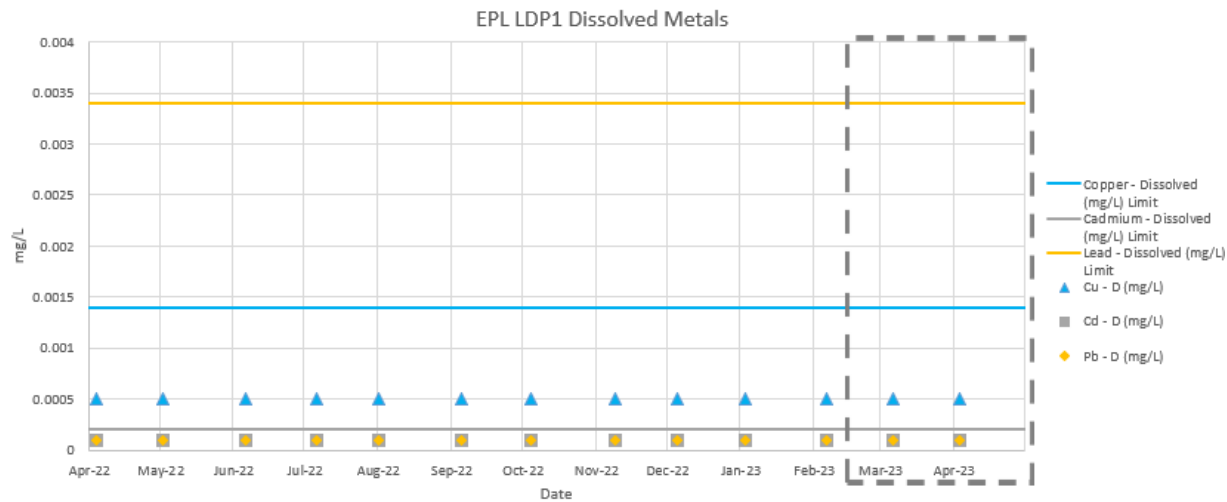
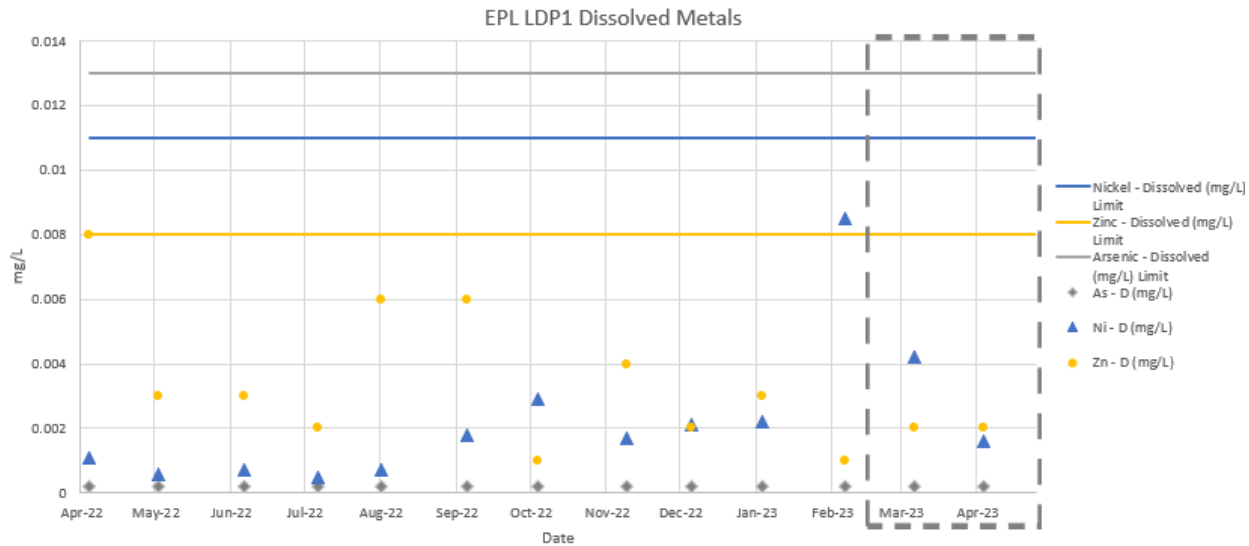
EPA 1 Daily Average EC
April 2022 - April 2023



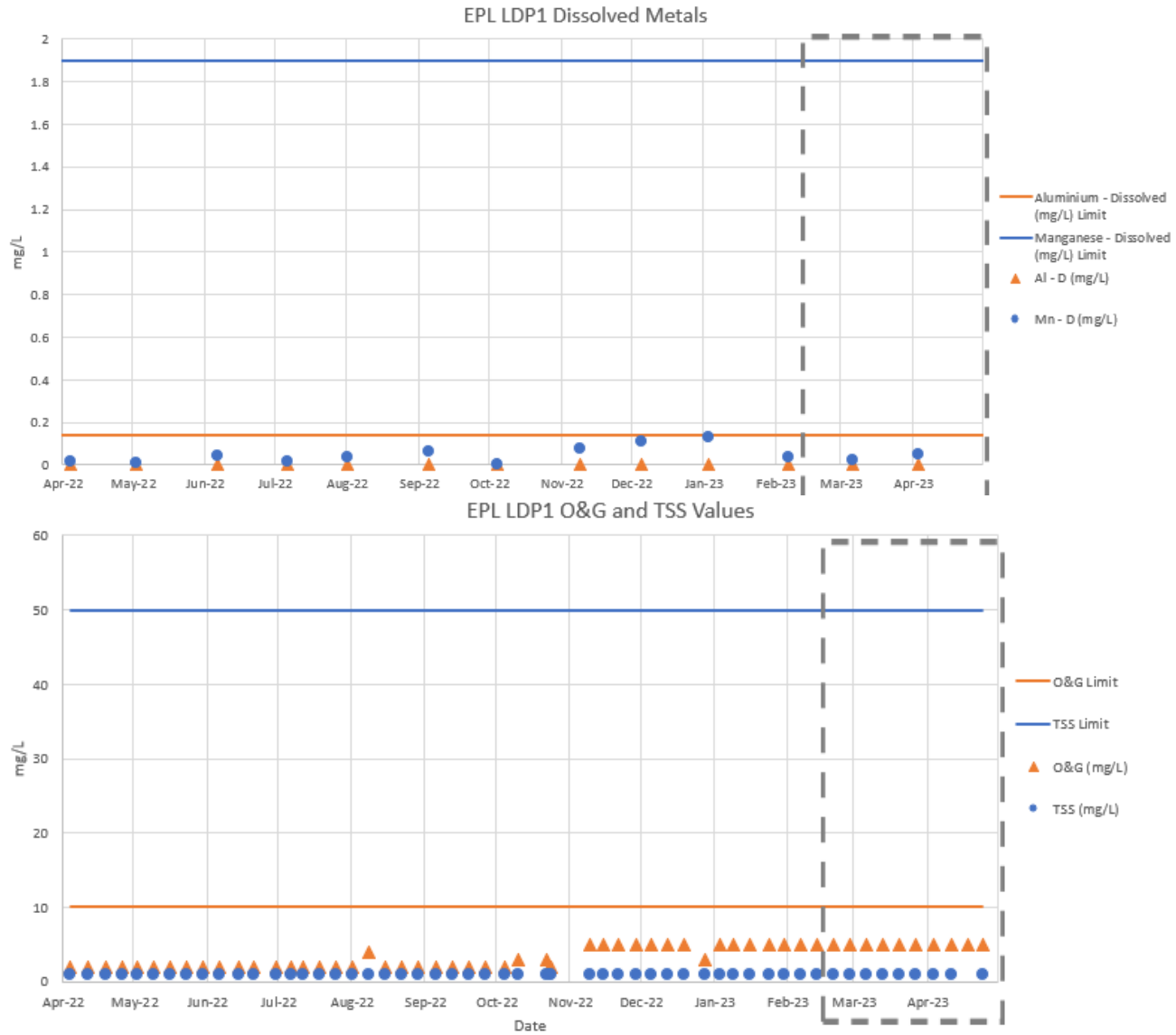
EPA 1 Daily Average Turbidity
April 2022 - April 2023



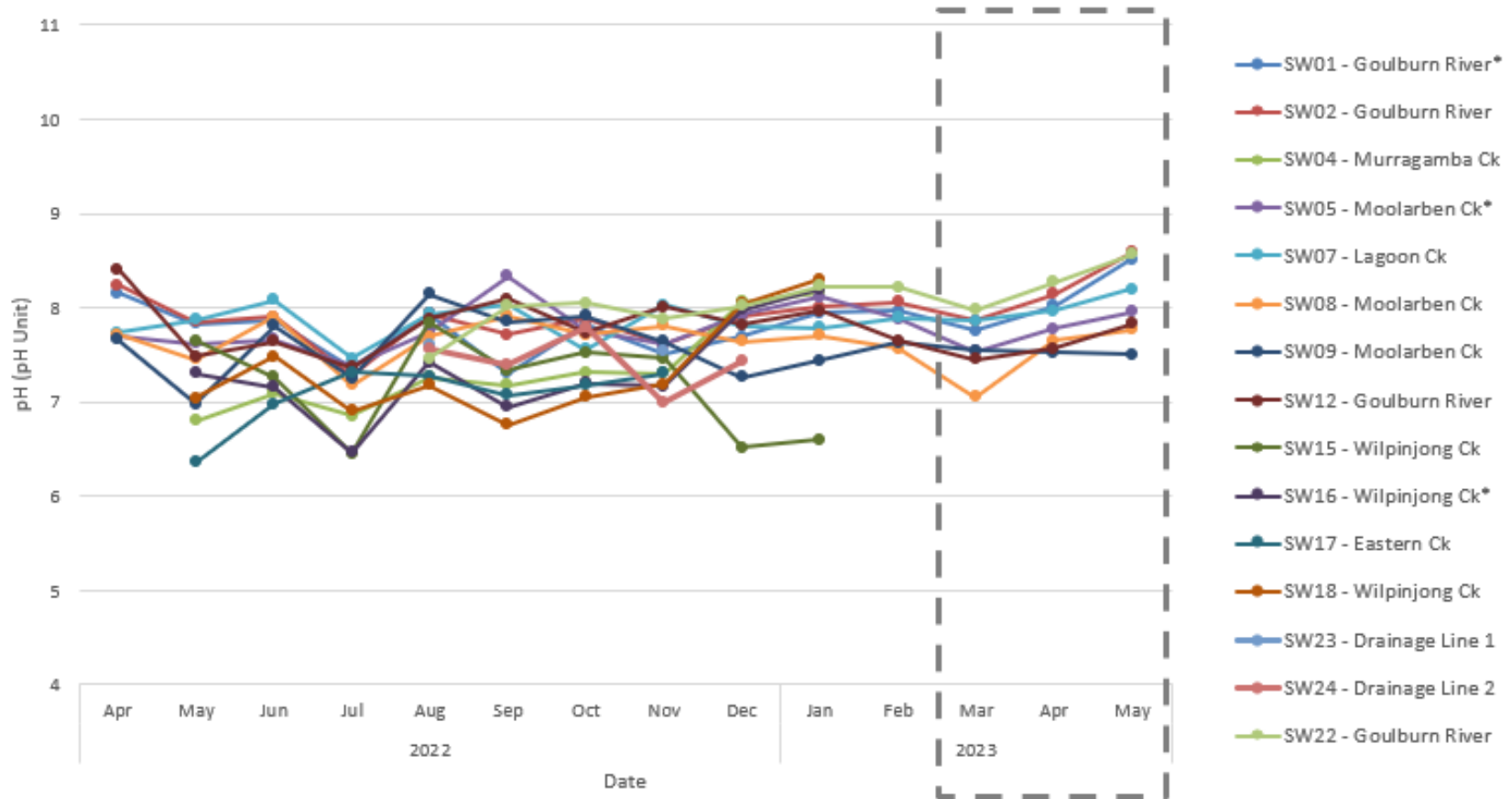
Water Release – EPA01



Water Release – EPA01

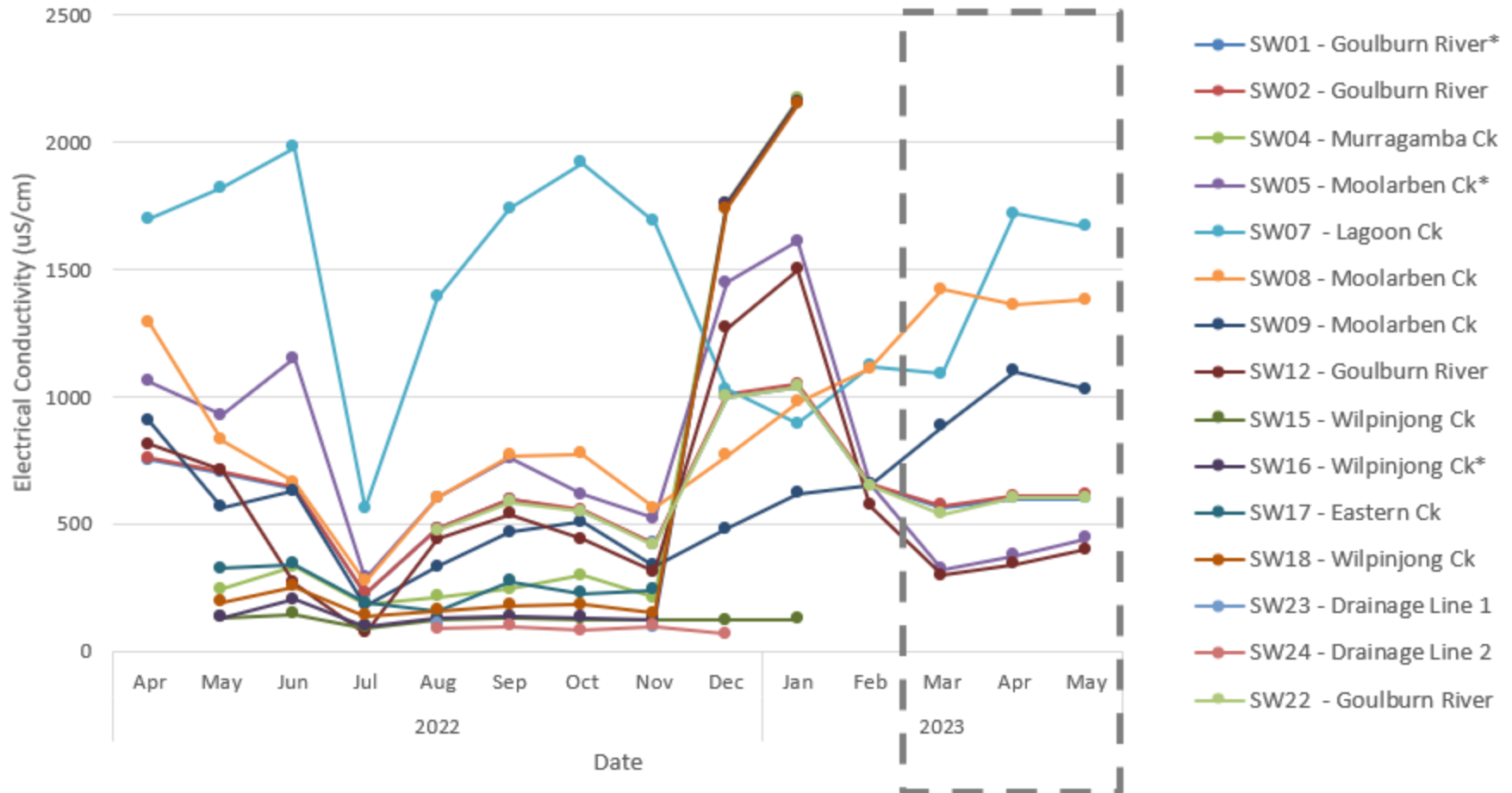


Water Quality - pH



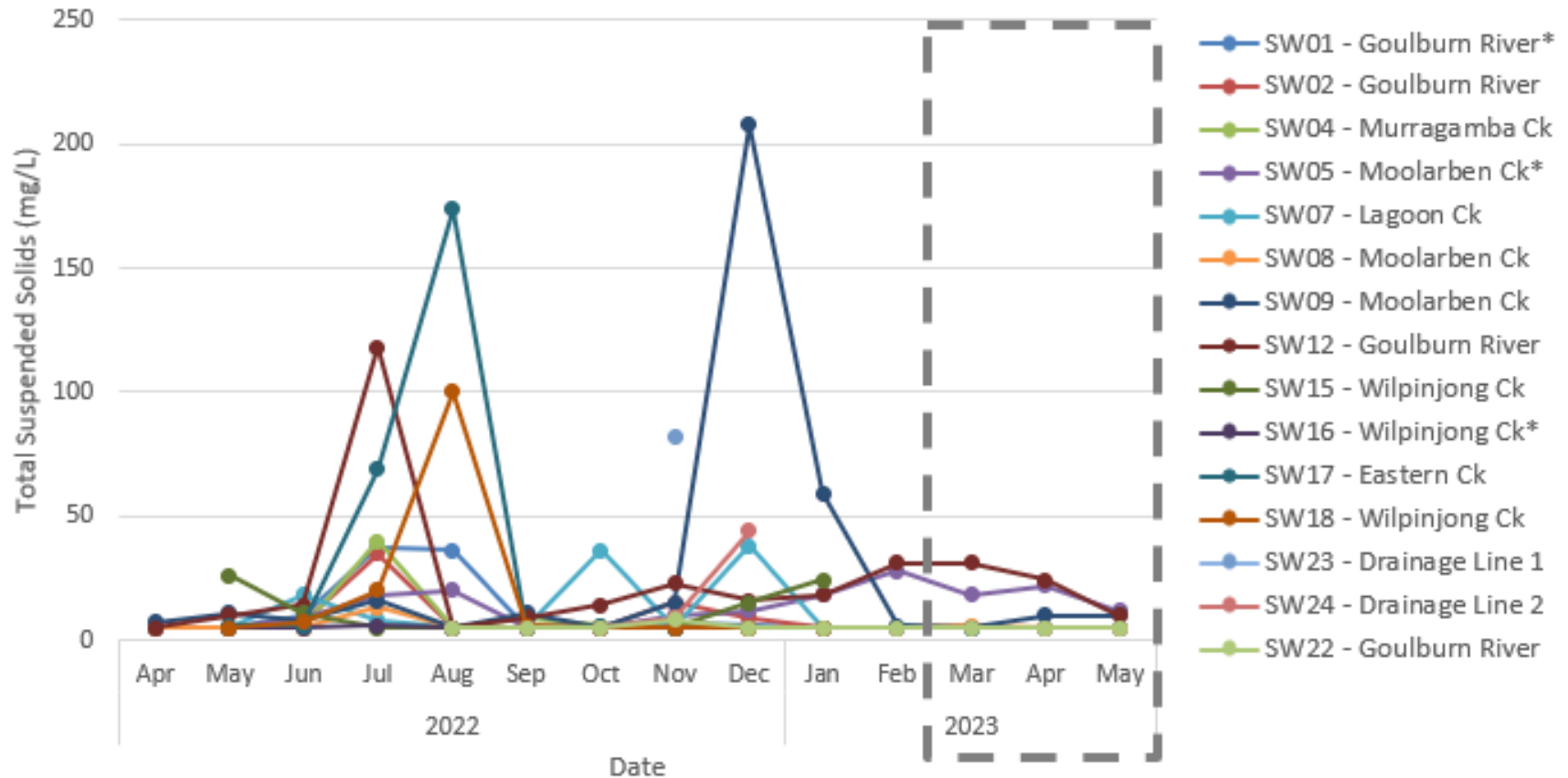
* Monitoring Locations with associated trigger investigation levels as per the Surface Water Management Plan

Water Quality - EC



* Monitoring Locations with associated trigger investigation levels as per the Surface Water Management Plan

Water Quality - TSS



* Monitoring Locations with associated trigger investigation levels as per the Surface Water Management Plan

Air Quality

Site	April 2022 PM10 Annual Average ($\mu\text{g}/\text{m}^3$)	April 2023 PM10 Annual Average ($\mu\text{g}/\text{m}^3$)	Air Quality PM10 Annual Average Criteria ($\mu\text{g}/\text{m}^3$)
TEOM 01	12.2	12.3	25.0
TEOM 07	8.0	7.7	25.0
TEOM 04	11.5	11.3	25.0

Site	April 2022 PM2.5 Annual Average ($\mu\text{g}/\text{m}^3$)	April 2023 PM2.5 Annual Average ($\mu\text{g}/\text{m}^3$)	Air Quality PM2.5 Annual Average Criteria ($\mu\text{g}/\text{m}^3$)
TEOM 07	4.2	3.9	8.0

Monthly monitoring reports are available on our website:

www.moolarbencoal.com.au/page/environment/environmental-monitoring/

Noise Monitoring

- All monthly & quarterly attended noise monitoring within criteria.
- Continued implementation of:
 - Planning controls - scheduling
 - Engineering controls - attenuation
 - Operational controls - bunds/screens
 - Real-time monitoring triggers
 - Real-time response protocols

LEGEND

- Exploration Licence Boundary
- Mining Lease Boundary
- Rail Line
- Watercourse

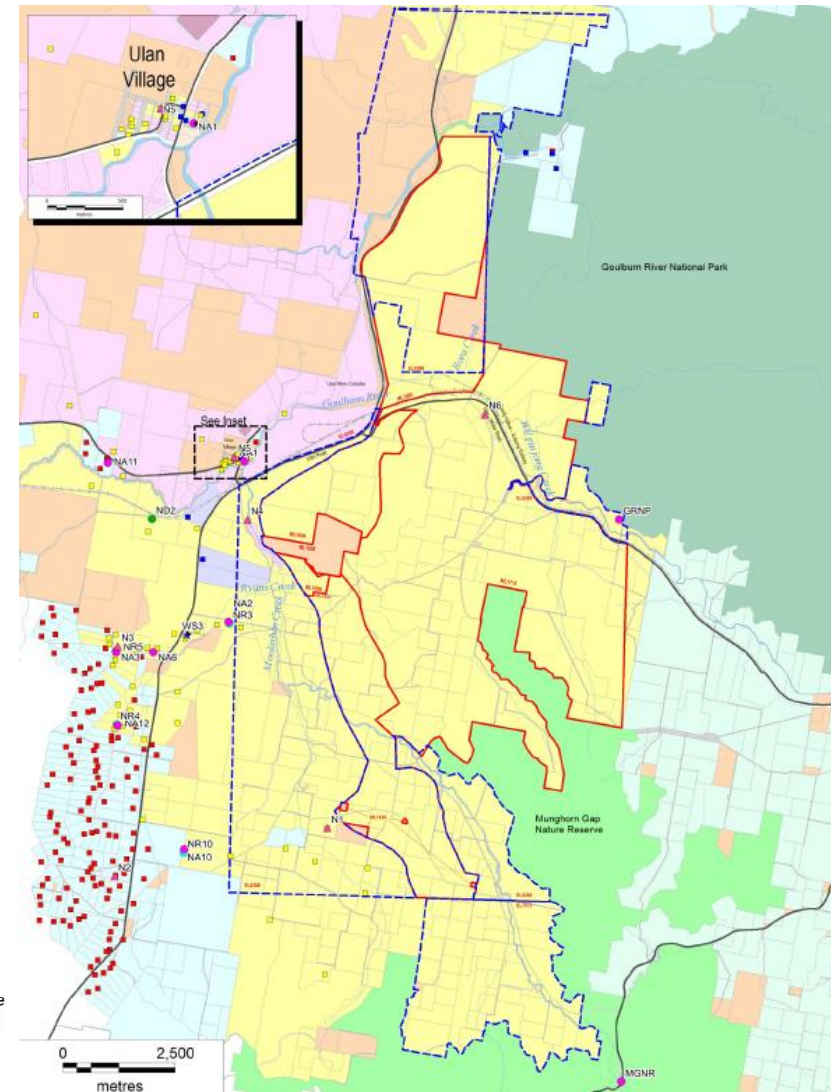
Ownership

- Yancoal
- Ulan Coal Mines Limited
- Wilpinjong Coal Mine
- Privately Owned
- Crown
- Commercial

- National Park
- Nature Reserve
- Mine Owned Receiver
- Private Receiver
- Commercial Receiver

Noise Monitoring Locations

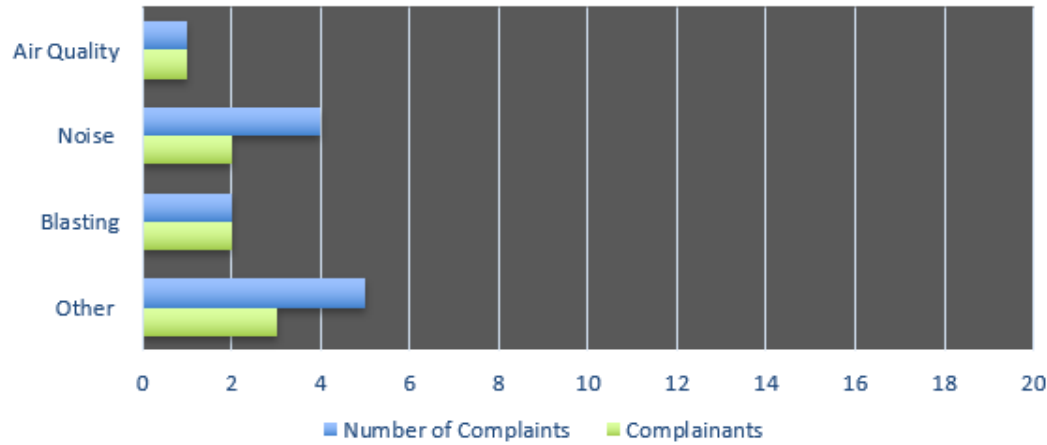
- Real-time Noise Monitoring Site
- Attended Noise Monitoring Site
- Directional Receiver
- Background Noise Monitoring
- Weather Station



Community Complaints

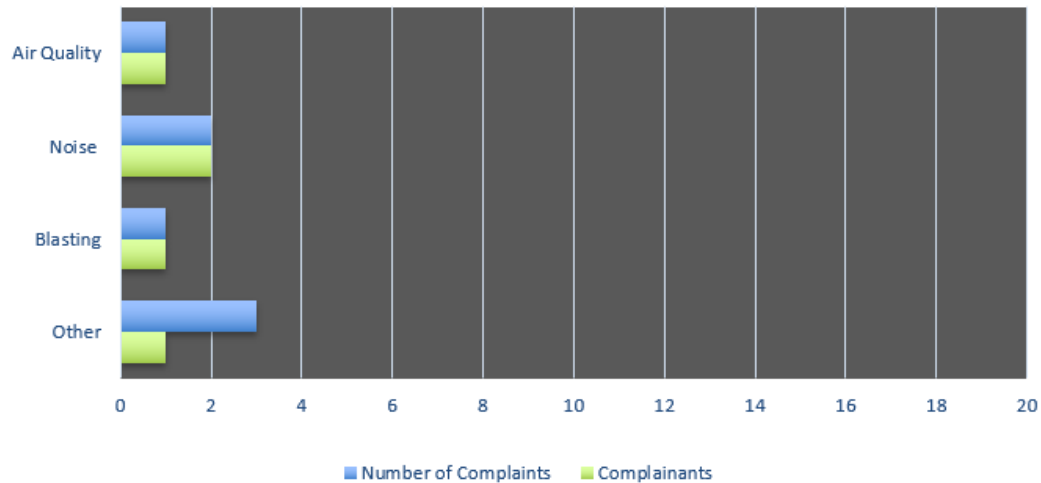
MCO Complaints YTD

Jan - May 2023



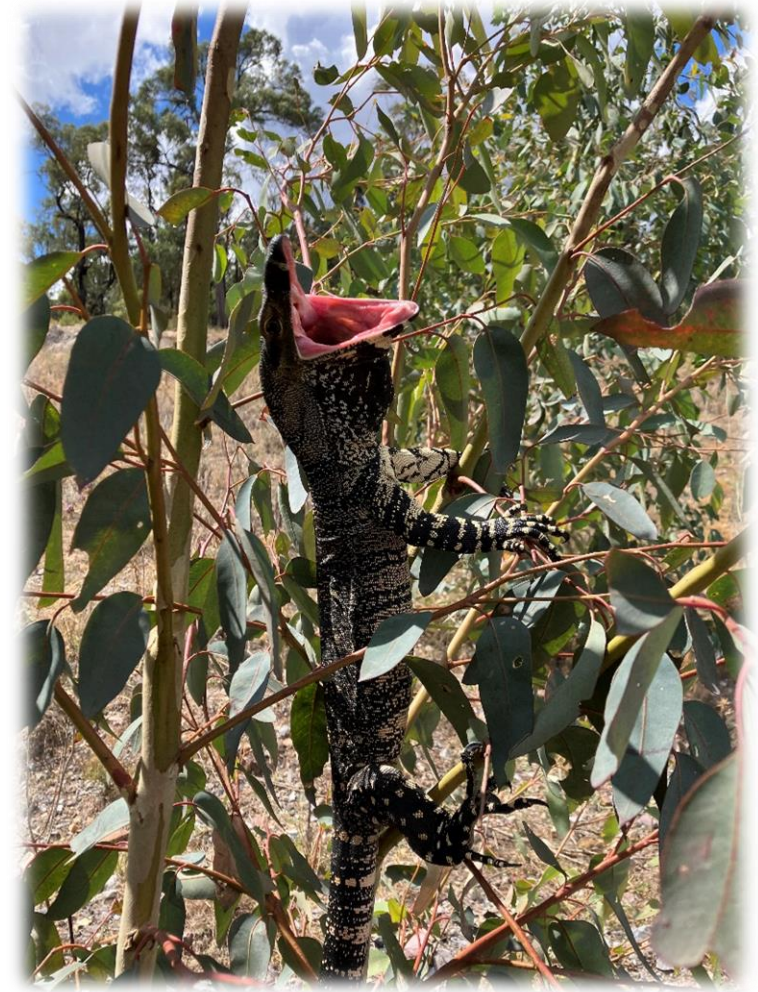
MCO Complaints - Q2

March 2023 - May 2023



Rehabilitation Update

- Rehabilitation maintenance works are continuing.
- Autumn monitoring is complete.
- OC2 works underway to progress from agricultural land to native vegetation.



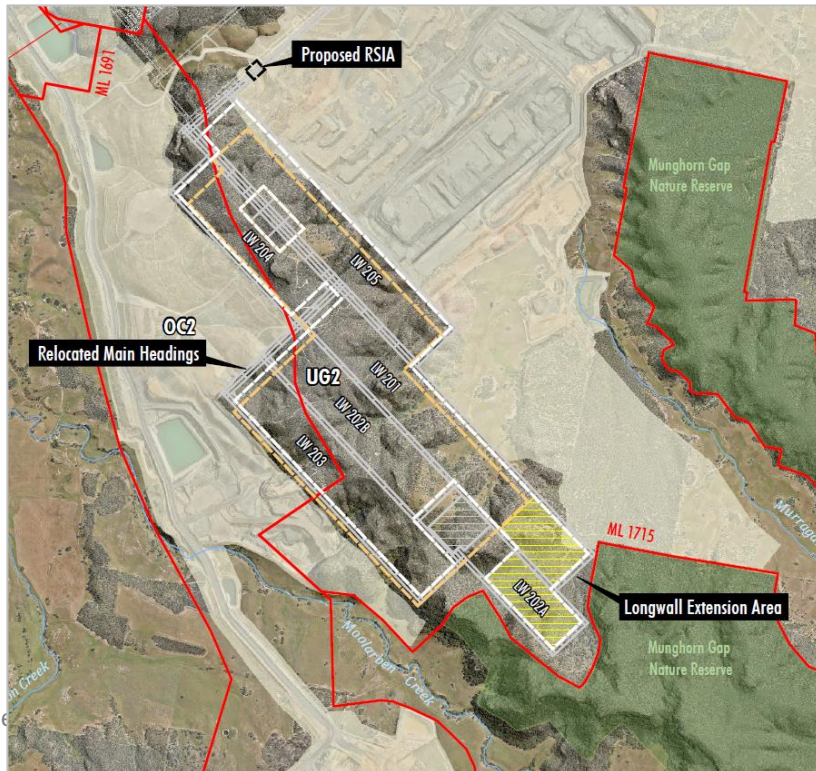
Biodiversity Offset Areas Update

- Works are continuing for Planting program on the Onsite, Ulan 18, Moolarmoo, & Redhills Biodiversity Offsets
- Offset maintenance works have continued, with a focus on the Dun Dun Offset due to the Alpha Road bushfire in March 2023.

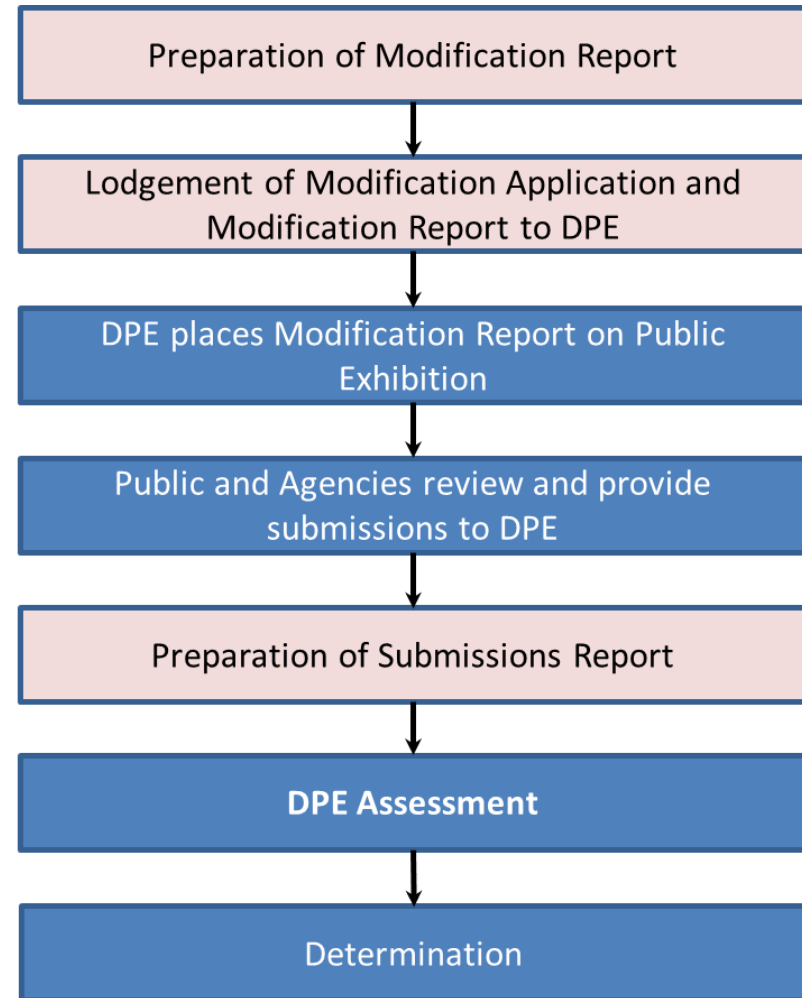


UG2 Modification

- Referred to Independent Panel for Underground Mining by DPE.
- Site visit and RFI from Independent Panel – March 2023.
- Response provided by MCO – May 2023.

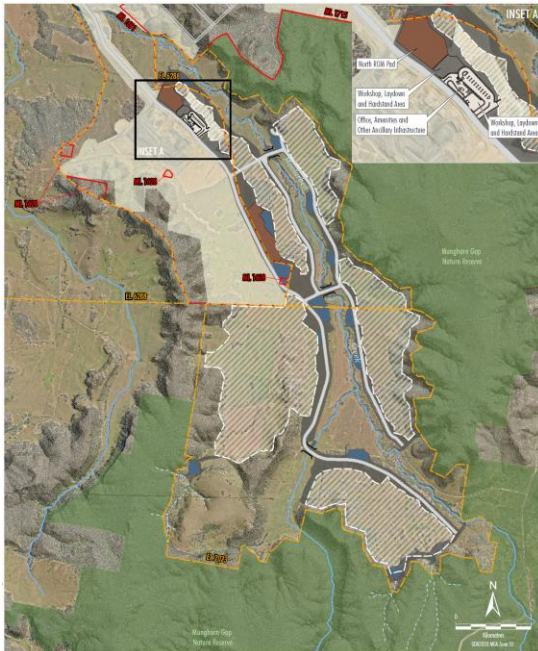


Current Status
➔

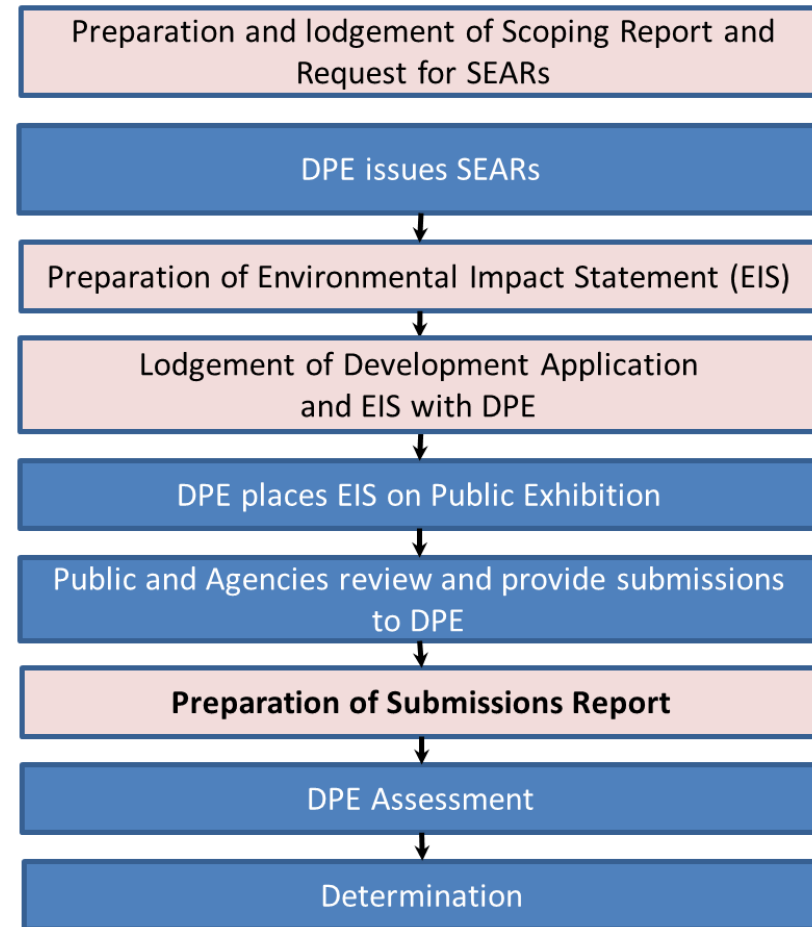


OC3 Extension Project

- Preparation of Submissions Report
- Key Aspects include
 - Aboriginal cultural heritage.
 - Key threatened species habitat and the adjacent Munghorn Gap Nature Reserve.
 - Groundwater dependent ecosystems, and springs in MGNR.



Current Status →



Employment Update

Current Traineeships

- 63 Trainees currently onsite
 - 37 Underground trainee mineworker
 - 25 Open Cut trainee mineworker
 - 1 Administration trainee at the Underground



Apprentices

- 26 Apprentices – 6 Underground, 13 Open Cut and 7 CHPP apprentices.
- Apprentice intake for 2024 in the planning stage

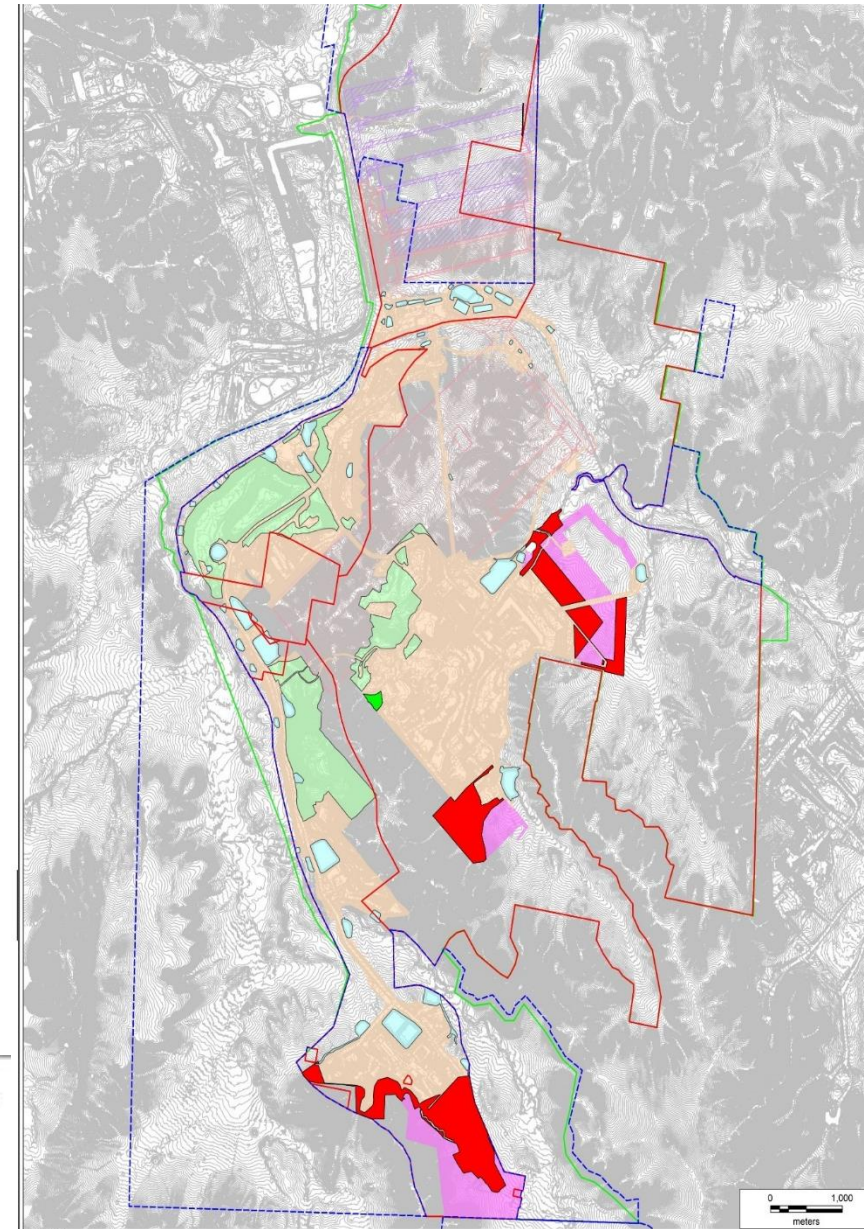


2022 Annual Review Summary

- Activities During the Reporting Period
- Environmental Performance
- Water Management
- Rehabilitation
- Community

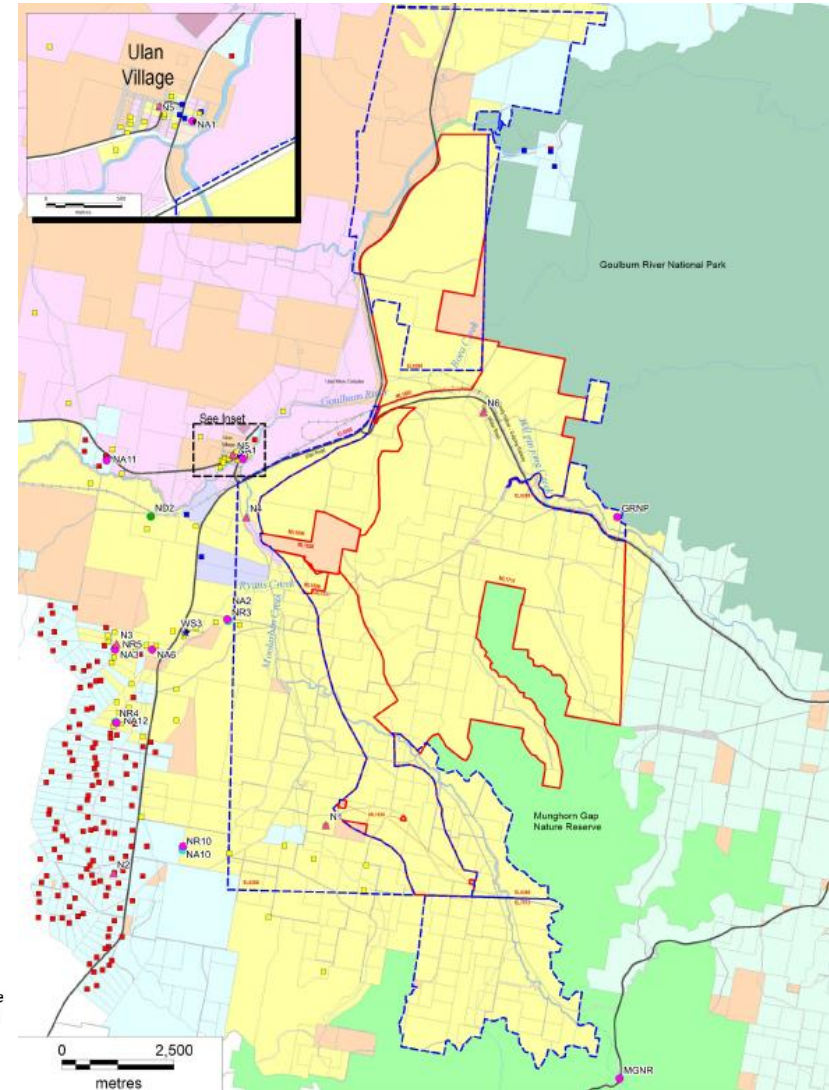
Activities During the Reporting Period

- Mining operations in OC2, OC3, OC4, UG1 and UG4
- Secondary extraction undertaken in Longwall LW401 and LW105.
- Progressive rehabilitation in OC2 and OC4
- Upgrade of the Water Treatment plant and associated infrastructure and upgrade works associated with the CHPP;
- 10.8Mt washed and 14.8Mt of product coal
- Exploration in EL6288 and EL7073



Noise, Blasting and Air Quality

- **Noise**
 - All attended noise monitoring within criteria.
- **Blasting**
 - No reportable fume events.
 - All vibration results within criteria.
 - One exceedance of airblast overpressure greater than 120dB.
- **Air Quality**
 - Annual average PM10 and PM2.5 within criteria.
 - All dust deposition results below criteria.



LEGEND

- Exploration Licence Boundary
- Mining Lease Boundary
- Rail Line
- Watercourse

Ownership

- Yancoal
- Ulan Coal Mines Limited
- Wilpinjong Coal Mine
- Privately Owned
- Crown
- Commercial

Noise Monitoring Locations

- Real-time Noise Monitoring Site
- Attended Noise Monitoring Site
- Directional Receiver
- Background Noise Monitoring
- Weather Station

Receivers

- Mine Owned Receiver
- Private Receiver
- Commercial Receiver

Environmental

- National Park
- Nature Reserve

Water

Water

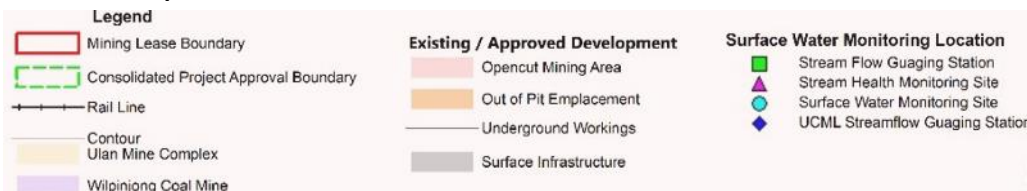
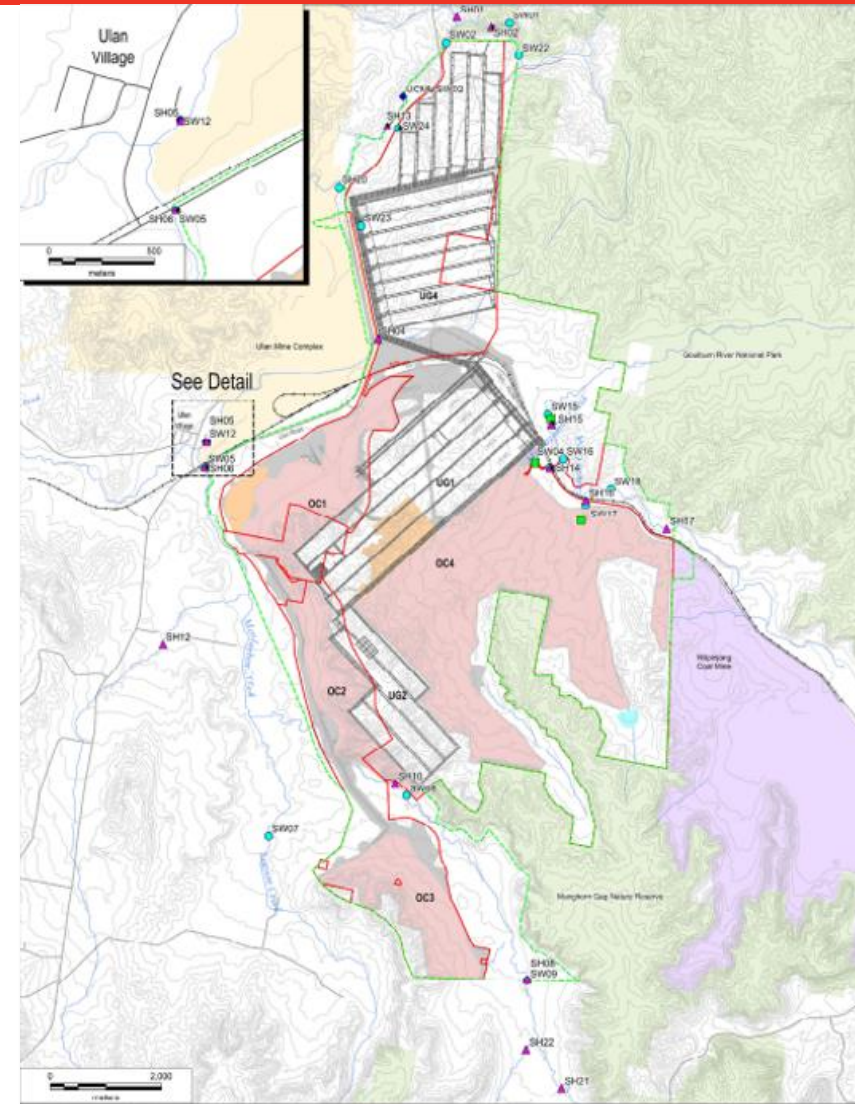
- Above average rainfall (1,182.8mm vs Avg of 651.2mm).
- 4,584 ML of water discharged.
- Surface water influenced by climatic conditions and generally consistent with historical range.

Stream Health

- Aquatic habitat condition influenced by wetter conditions and high flow events.
- Climatic factors and flow regimes continue to be the dominant influence on aquatic ecology.

Channel Stability

- Stability was variable within each creek.
- The 2022 channel stability trends generally display an improvement overall.



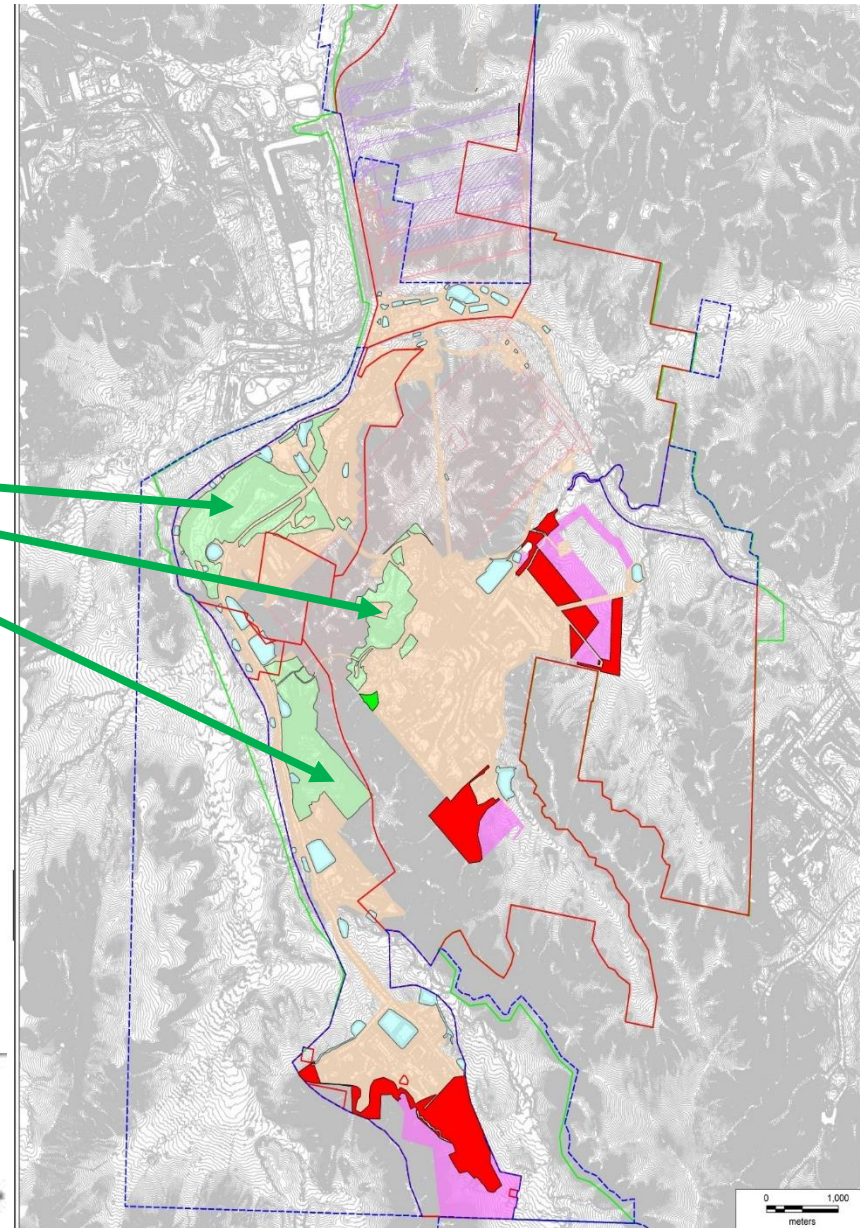
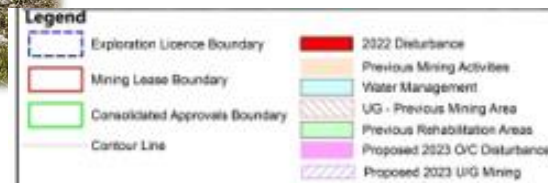
Mine Subsidence

- Subsidence impacts during the period were consistent with predictions. Vertical subsidence was generally below predictions
- No performance measures exceeded.
- No built features impacted by subsidence.



Rehabilitation

- **Activities**
 - Progressive rehabilitation in OC2 and OC4.
 - Maintenance of existing rehabilitation has continued.
- **Status**
 - 53ha Landform Establishment.
 - 358ha Ecosystem and Landuse Establishment to date.



Incidents, Compliance and Complaints

■ Incidents and non-compliances

- On 20 May 2022 there was an exceedance of airblast overpressure criteria of 120 dB (Lin Peak) at Ridge Road (BM5), where the airblast pressure was recorded as 124.1 dB (Lin Peak).
- From 1 October to 11 October 2022, there was a release out of specification treated water from the water treatment plant. The released water contained Free Chlorine Levels above ANZECC guidelines for 95% species protection however, the levels were within range of the Australian Drinking Water Guidelines.

■ Complaints

- 26 direct complaints from 9 complainants.
- Decrease from the previous reporting period.
- 62% of complaints were received from 3 complainants.
- Noise the primary issue of concern.

■ Engagement

- Moolarben Spirit Awards Program promoting positive contributions in education.
- Mudgee Community Scholarship program.
- Max Potential Program at Club Mudgee.
- Direct engagement.



■ Community Support

- Donations and sponsorships provided across 44 local groups and organisations.



