

**MOOLARBEN COAL OPERATIONS - COMMUNITY CONSULTATIVE COMMITTEE
MEETING No. 69**

Date: Tuesday, 4th June 2024
Time: 2:01 pm
Location: Moolarben Coal Open Cut Administration Board Room, Ulan
Attendance: Independent Chairperson
Lisa Andrews (LA)

Community Members

Dr Julia Imrie (JI)
Bev Smiles (BS)
Cr Katie Dicker (KD) – MWRC Delegate

Moolarben Coal Operations

Brian Wesley (BW)
Trent Cini (TC)
Rebecca Shanks (RS)
Morgan Yeatman (MY) *{Minute taker}*

Apologies

Aleisha Lonsdale (AL)
David Lowe (DL)
Helen Ungaro (HU)
Mayor MWRC - Cr Des Kennedy (DK)
David Stokes (DS)

Meeting 69 Agenda and Presentation were provided to all meeting attendees.

1. Introduction and Welcome

Lisa Andrews (LA) opened the meeting and welcomed all attendees to the Moolarben Coal Operations (MCO) Community Consultative Committee (CCC).

2. Apologies

Aleisha Lonsdale (AL)

David Lowe (DL)

Helen Ungaro (HU)

Mayor MWRC - Cr Des Kennedy (DK)

David Stokes (DS)

3. Business Arising from Previous Finalised Minutes

LA confirmed previous meeting minutes finalised and distributed on 28 March 2024.

Actions from Meeting 68:

1. Carry over from Meeting #67: Advise CCC on submission of the Amended OC3 Extension Project reports.
2. Provide hectare comparison of disturbance vs rehabilitation across MCO.
3. Provide volume of potable water purchased for use at MCO.

Correspondence as sent with the Meeting Notice on 24 May 2024:

- 15/3/24 – Email to members with draft minutes for review
- 18/3/24 – Email to members with the Notification of the Submission of the OC3 Extension Project Amendment report and Submissions report to the Department of Planning. (Action Item 4 from meeting # 67).
- 28/3/24 - Email to members with final minutes & presentation.
- 2/4/24 – Email from RPS Group regarding IEA for MCO. Send to members for consideration.
- 16/4/24 – Email to RPS Group advising that no issues received for inclusion in IEA from CCC members.
- 7/5/24 – Email from MCO advising that the 2024 Annual Review has been approved by DPHI and is now available on the project website. Forwarded the members the same day.
- 24/5/24 - Email to members with the Meeting Notice & Agenda for this CCC.
- 03/06/25 – Email to members reminding members of the meeting and to RSVP

Declarations

LA declared that she is an Independent Chairperson, appointed by the DPHI and engaged by MCO to chair this meeting. She confirmed that all attendees have completed and provided to LA signed hard copies of a *Declaration of interest form for community consultation committees* (Department of Planning, Housing and Infrastructure, 2024) and *Community Consultative Committee code of conduct for committee members (excluding chairperson)* (DPHI, 2024).

CCC Update Presentation

RS provided an update on the 2024 Community Support Program (CSP) and Community Events for the quarter prior to the meeting.

RS provided an operational update on the opencut. JI stated she did not receive confirmation of her questions from the Independent Auditor. TC confirmed her questions were received. RS answered Meeting #68 Action Item 2 stating potable water is purchased under a commercial agreement so would not give further details but stated the complex intake averages approximately 4.4ML per month for a range of requirements onsite. BS asked for the volume of effluent disposal at the complex. RS stated that in-pit crib hut effluent is taken to Mudgee council treatment works; approximately 0.4ML per month. BS asked how much effluent is treated onsite under the EPL. RS stated MCO is not required to record effluent volumes under the EPL. JI asked when the estimated time of Opencut 4 mining completion is. TC stated mining is approved to 2038 and operations are on track. TC described the opencut progression on map in slides.

RS provided an operational update on the underground. BS asked what is the timing on the UG2 extraction plan (EP). RS stated the EP would be submitted around mid to late next year; which covers the whole of the UG2 area. BS asked what is the process for the extraction plan in the North/South panels in UG4. RS stated studies are currently underway by a range of specialists, these are then submitted to DPHI for approval and consultation in line with the Project approval.

JI asked if additional monitoring will be installed for the north-south panels. TC stated additional monitoring for the east/west panels and monitoring in advance of mining is currently underway with further monitoring equipment installed as required. JI requested it be noted that the north-south panels 9-14 are located adjacent to The Drip and river corridor and in her opinion the drip are the most sensitive and important environmental area.

BS asked who is completing the EP reports. RS listed the specialists undertaking the EP reports.

BS asked if MCO was assessing just roads or further vegetated areas for subsidence impacts. TC listed monitoring requirements being undertaken for subsidence as assessed and approved by the DPHI. BS asked if this information is in the annual report. TC confirmed it was. KD asked what monitoring is undertaken for subsidence. RS described the various monitoring currently being undertaken. JI asked if there was subsidence monitoring of The Drip gorge. TC stated there is an array of monitors within the UG4 area.

RS provided an update on exploration. BS asked what were the plans for EL 6288. TC confirmed the southern area has approval with continued drilling and the northern area is undergoing approvals. JI asked if mining was planned for the area north of (above) The Drip and does the planned drilling include water monitoring bores. TC confirmed groundwater monitoring bores are currently being reviewed for installation to the north of the Drip in line with conditions of the approval. BS asked if more exploration planned for OC3 extension. TC confirmed that further exploration is approved under the EL's in that area. BS asked for northern EL 6288 drilling activities. TC confirmed approximately 11 drill holes are planned in the second half of the year. JI said that it was her understanding that groundwater monitoring in the area north of The Drip would be required prior to an exploration drilling program. TC confirmed under the Assessable Prospecting Operations (APO) process that water monitoring is not classed as prospecting and not a requirement for exploration activities. JI asked if MCO have to do a Review of Environmental Factors (REF) before proceeding with the exploration holes. TC stated MCO would need to complete the required aspects of a non-complying exploration activity that will need to include additional information about the environmental impacts and how they will be controlled. KD asked over what time frame would drilling occur. TC stated it will take several months to drill the holes. BS asked how many holes have been drilled in the northern section. RS stated this has been answered in a CCC previous meeting.

RS provided an update on environmental monitoring.

RS provided an update on surface water quality. JI asked confirmation that the water quality as per the graph was release water from the RO plant. RS and TC confirmed it was treated water. JI asked to confirm SW22 location. RS stated SW22 was at corner gorge downstream of the drip. JI queried the accuracy of the flow data which showed less volume of water flow downstream of The Drip compared with upstream, which did not make sense. RS discussed the accuracy of the flow data. JI also stated that it is likely that flow would be occurring in the sands of the riverbed

that would not be captured by the monitor. BS asked if it was Lagoons creek spiking in the TSS graph. RS confirmed it was. JI stated Lagoons creek has had a history of high salt. JI asked if SW12 was behind the Ulan school. RS confirmed it was.

RS provided an update on air quality and blast results. JI asked about the February blast max as it was higher than the dBL limit. RS confirmed the exceedance was discussed in the last meeting. BS asked what does reporting of an overpressure exceedance entail. RS described the process of self-reporting to the department.

RS provided an update on noise monitoring and community complaints. BS asked where the complaints came from in relation to the mine. RS confirmed they came from the Ulan village and the Cooks Gap areas.

RS provided a rehabilitation update. BS asked if the OC2 area had completely finished mining. TC confirmed no extraction from OC2 with mining in OC1 MOD9 moving around a corner towards the OC2 area. JI asked if planned feral animal baiting include pigs and what was the success rate. RS confirmed baiting program did include pigs but was not due to start until the week of 10 June.

RS provided an update on the OC3 modification. BS asked what did MCO show the department during their visit to site. TC stated the general OC3 extension area. JI asked if they viewed the Triassic springs in the upper Moolarben valley. TC confirmed they did not. BS asked who attended. TC stated panel members and department members who attended on separate days.

RS provided information on the NSW EnergyCo transmission infrastructure modification. BS asked if EnergyCo are required to provide offsets for the impacts to MCO's Offsets. TC stated the EnergyCo EIS includes all the information related to the Powerline infrastructure and their commitments. JI asked where the proposed powerline would travel. TC described the location of the infrastructure in relation to MCO operations.

RS provided an employment update. JI asked what universities the students came from. RS stated they came from a range of universities including Newcastle and Wollongong.

RS provided an update on the 2023 annual review.

RS provided an update on the activities during the 2023 period. BS email question #1: *OC1, OC2 and OC3 have a production rate changing from 2,608,110 (previous); 3,790,532 (current) and 4,551,203 (forecast) Are these figures all from extraction in OC3 only?* RS stated the production rate for the previous figure included OC2 and OC3, the current figure included OC1 and OC3, and the future figure included OC1 and OC3. BS email question #2: *OC4 has a drop in forecast production. This appears to accommodate the increased production in OC3 to mine up to the 16 MT limit. Has the full 16 MT been achieved anytime in the past?* RS answered the production figure does not include the OC3 extension. RS stated the 16Mt production limit has not been reached to date. BS stated she found the annual report confusing in terms of what opencut area had what activity being undertaken. TC discussed the complex nature of the table 8 limits and annual tonnages. JI asked will the 5 northern panels in UG4 be under the 8Mt per year limits. TC and BW confirmed it would.

RS provided an update on the noise, air, blasting and water for the 2023 period.

JI referred to data on monitoring bores PZ194C and PZ195C in the Triassic sandstone which showed a drop in groundwater levels of 10.7 and 16 metres respectively, but this was not presented in the report summary. TC confirmed the data was in the report just not in the groundwater summary. JI asked why MCO report summary included PZ192 and PZ213 (which triggered a response TARP) but did not discuss the greater declines in PZ194C and PZ195C ?

BS asked what was the result of the PZ213 investigation. TC stated the investigation findings concluded the trigger had not caused, or have the potential to cause, material environmental harm. BS asked whether these results are included in further monitoring understanding. TC confirmed that groundwater monitoring results are included in updates to groundwater and extraction management plans. BS asked what informs which groundwater bores have

triggers and which don't. TC stated that the groundwater management plan and associated reports inform what groundwater bores have trigger levels which is reviewed and approved by the department.

RS provided an update on mine subsidence in 2023. JI asked MCO to confirm where the J line is as it may be a typo. RS stated this could be a typo which will be looked in to **(Action)**. JI asked where the M survey line is located in UG4. RS described the location of the monitoring lines in UG4.

RS provided an update on the 2023 rehabilitation. RS answered Meeting #68 Action Item 1, stating disturbance and rehabilitation numbers to date. JI asked if the disturbance figure include the underground. TC confirmed this number included only surface infrastructure related to the UG.

RS provided an update on incident, compliance, complaints and community engagement in 2023.

4. General Business

LA asked if there were any general business from members.

JI stated the Goulburn River has turned an opaque white/grey after the rain last week and queried if MCO has inspected streams in this area for a possible sediment source? TC stated, following rainfall on the weekend, monitoring was undertaken in this area with no issues identified.

BS asked what was MCO's viewpoint regarding discussions with Wilpinjong of the two opencut mines heading towards each other and the rationalisation of the two adjacent final voids. TC stated discussions were underway in very initial stages as required under MCO approvals. BS asked when does MCO expect OC4 to reach Wollar Road. BW said an action would be raised to get firm information on timing **(Action)**.

BS asked, regarding the annual review report, why are production extraction rates reducing in OC4 and becoming greater in OC1, OC2, and OC3 in future. TC stated the OC4 drop in extraction was very minor and the increased extraction was due to mining back in OC1.

BS informed the CCC that the Cumbo RFS brigade was up and running, including the Wollar community and areas around Ridge Road. BS stated she was undertaking the community engagement officer role with a planned ramp up of engagement prior to the next fire season. BS queried if MCO could distribute RFS communications with leaseholders during the pre-fire season. TC stated MCO would happily assist with RFS communications to landholders when required.

TC informed the CCC that this would be his last meeting as he was moving on from MCO. LA congratulated TC on his new role and thanked him for his time and professionalism on this committee over the years.

5. Next Meeting: 3rd September 2024, on site at 2:00 pm.

Meeting closed at 3:30 pm with LA thanking members for their attendance and participation.

Action Items:

Item	Action	Responsibility
1	MCO to confirm where the UG4 subsidence monitoring line 'J' is in the UG4 EP.	MCO
2	Confirm timing of OC4 proximity to Wollar Road.	MCO

Community Consultative Committee Update

June 2024

Moolarben Coal Operations



2024 Community Support Program (CSP)

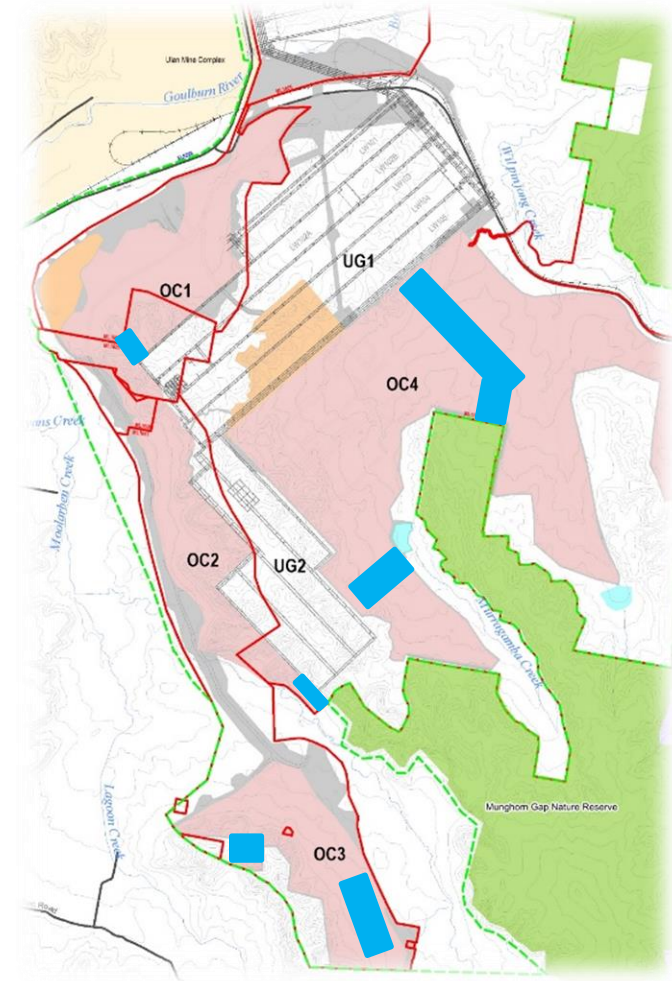
Yancoal-Moolarben Coal CSP Events for the prior quarter included:

- MWRC Seniors Festival
- FITASC Oceania Championship
- MCO Family Days



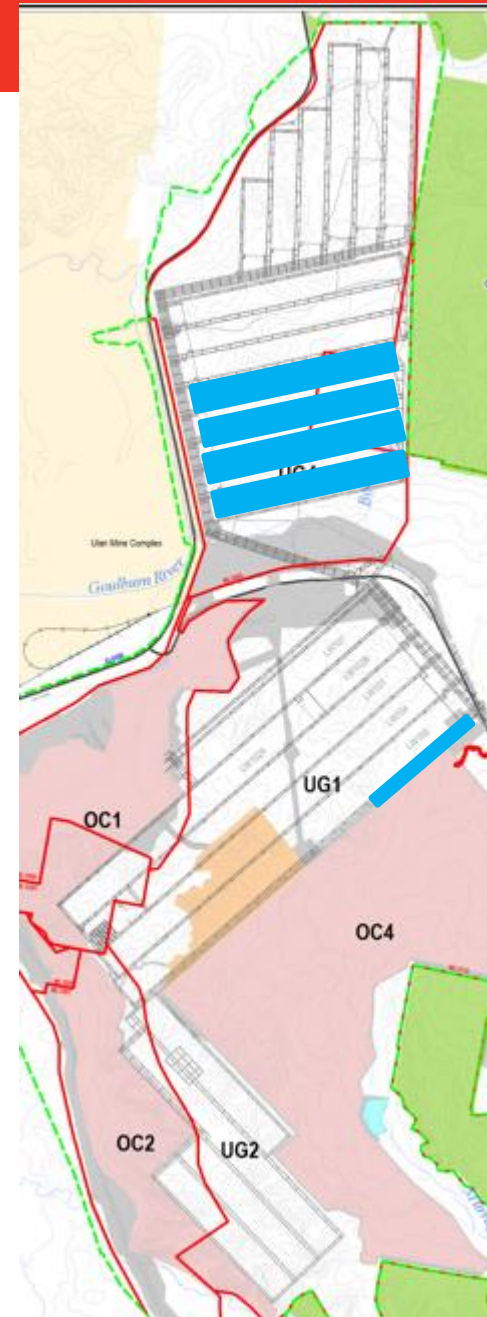
Operational Update - Opencut

- Open cut operations in OC1, OC2, OC3 & OC4.
- Water Treatment Plant operations recommenced in February.
- 2023 Annual Review approved by DPHI
- 2021-2024 Independent Environmental Audit completed.
- Blast Overpressure Event - Blast fired in OC1 on Wednesday 29 May, MCO reported to DPHI and EPA. Investigation currently underway.



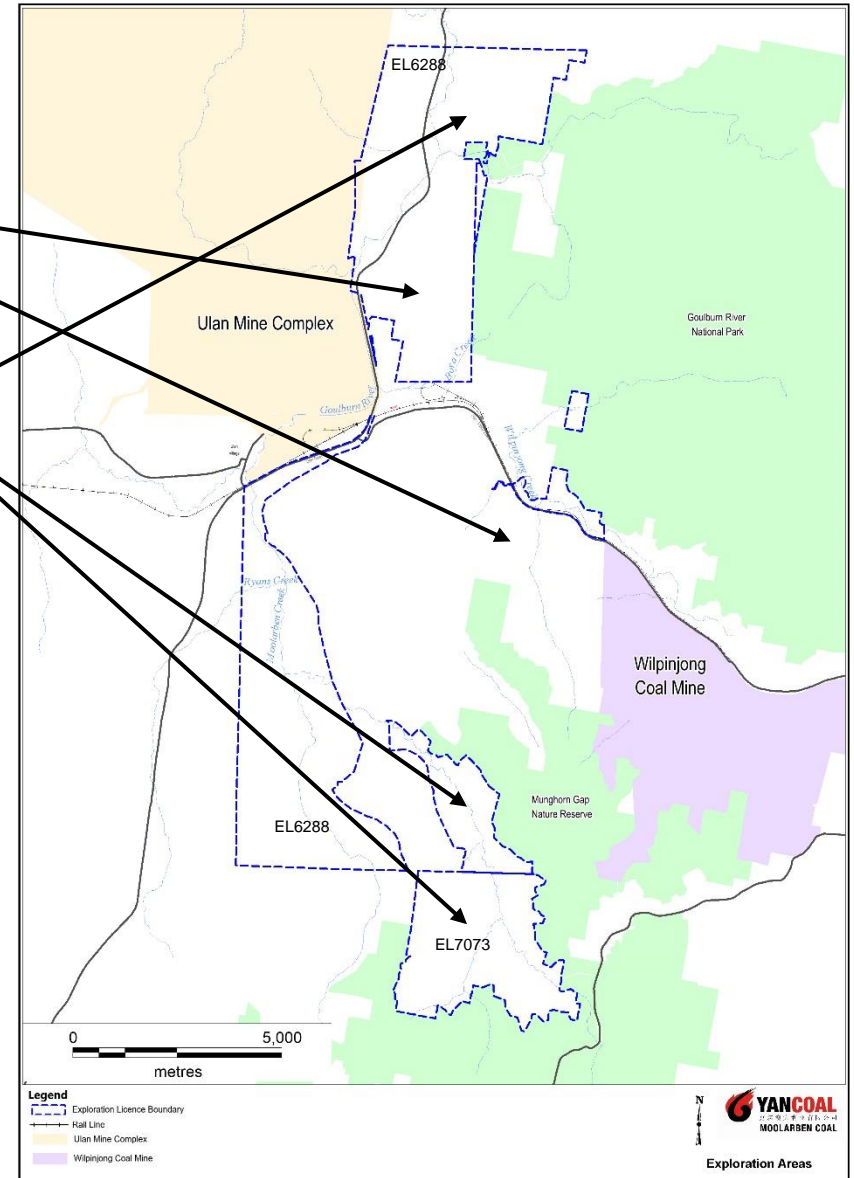
Operational Update - Underground

- Longwall operations completed in LW404.
- Longwall move currently underway.
- Continued underground development in UG4 and commencement towards UG2.
- MCO has commenced preparation of Extraction Plan for the next set of Longwalls, LW409-414.
- The LW409-414 Extraction Plan is currently scheduled to be lodged in Q3 2024.
- The extraction of LW409-414 would indicatively occur between 2026 - 2028.



Exploration Update

- Drilling – Planned to continue in ML1715 and ML1605
- Drilling is planned to commence and continue in EL6288 and EL7073
- Rehabilitation and monitoring activities have continued during the period.



Environmental Monitoring

Monitoring network

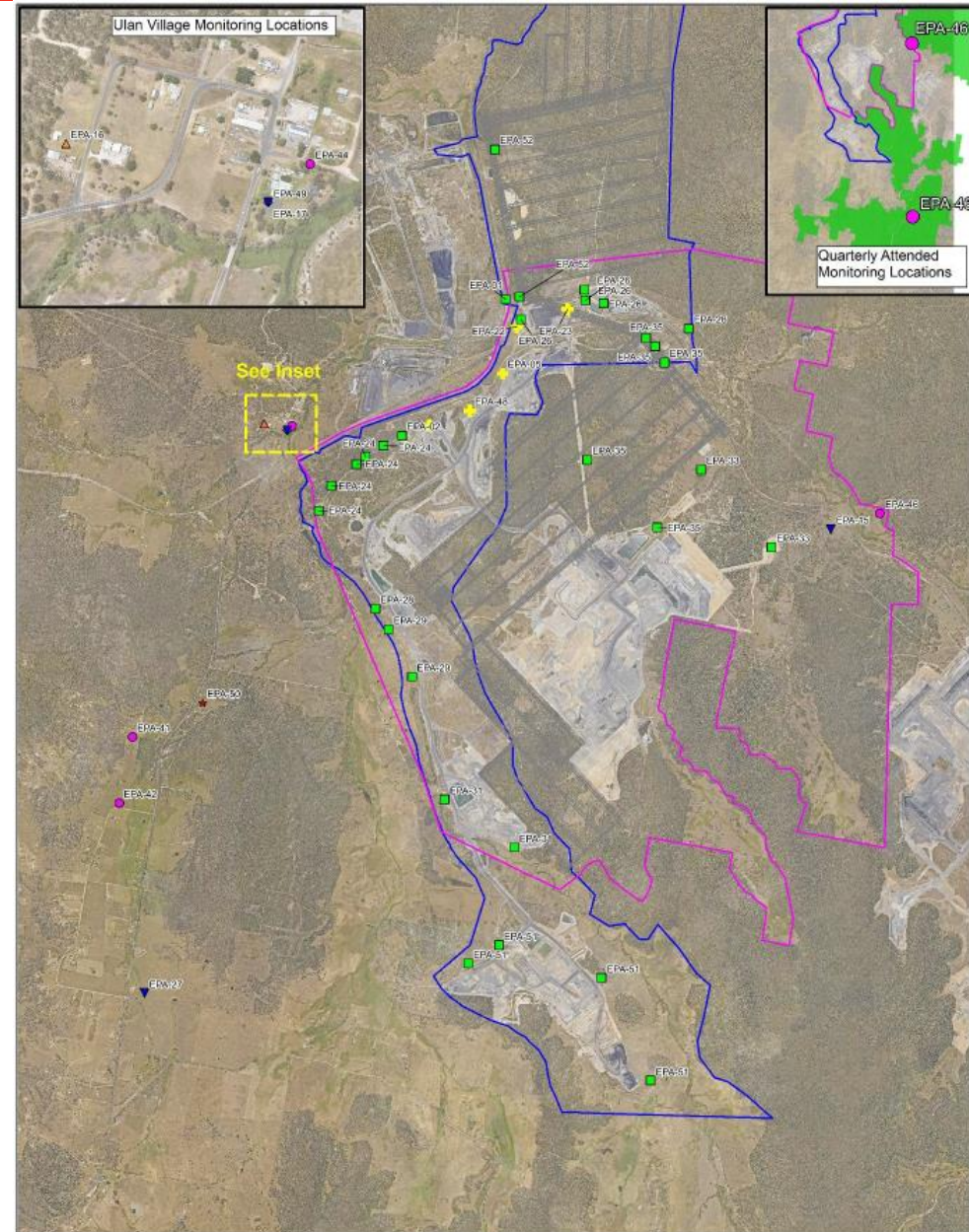
- Water;
- Air Quality;
- Blasting;
- Noise; and
- Meteorology.

Legend

- Stage 1 DA Boundary
- Stage 2 DA Boundary
- Approved Underground Workings
- Approved_Underground_Workings

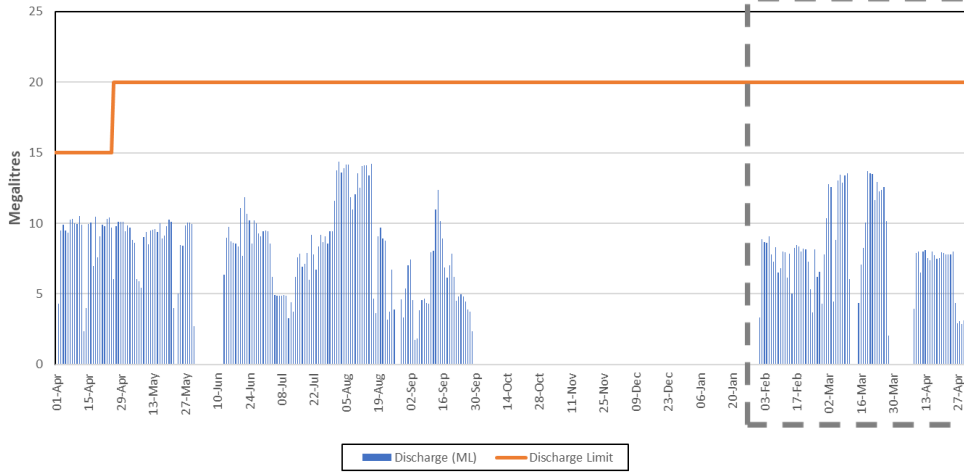
EPL Monitoring Locations

- Real-time TEOM
- Effluent Monitoring
- Water Discharge Point
- Attended Noise Monitor
- Blast Monitor
- Weather Station
- PM10 Monitor

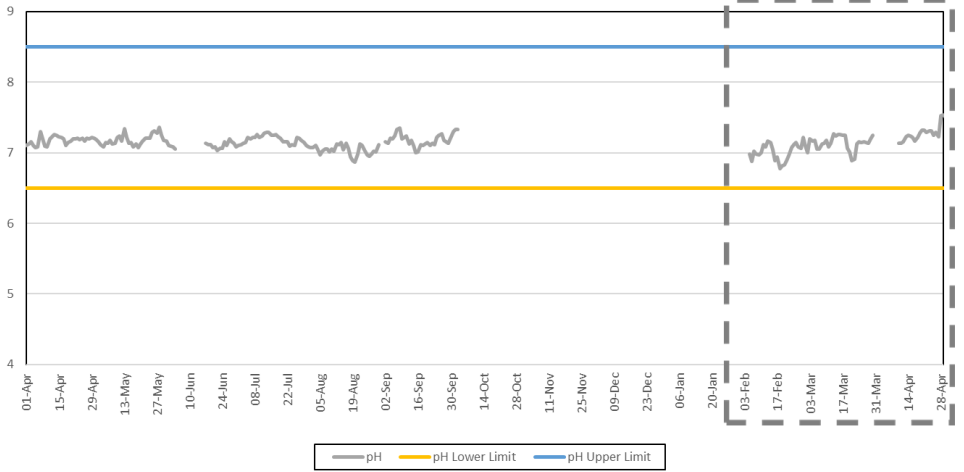


Water Release – EPA01

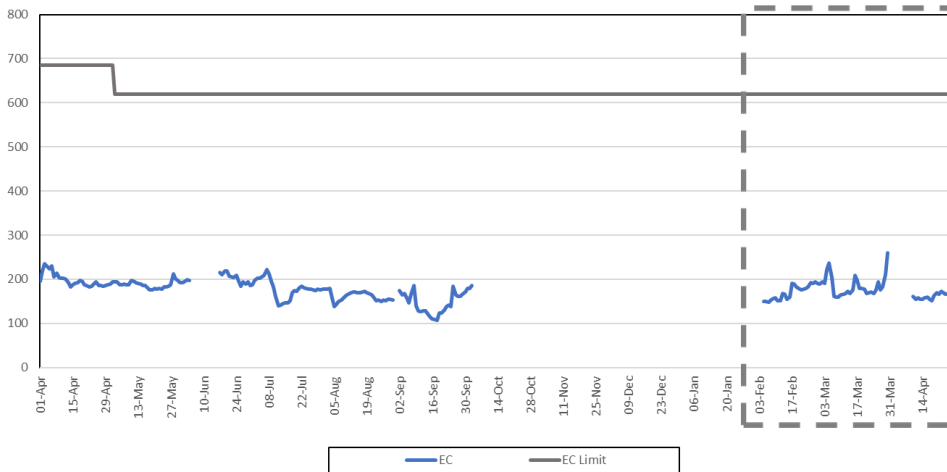
EPA 1 Daily Discharge Volumes
April 2023 - April 2024



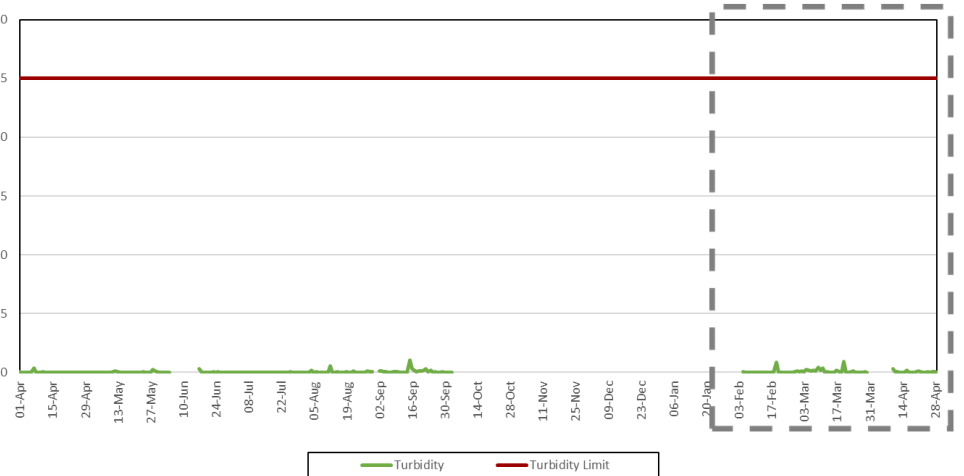
EPA 1 Daily Average pH
April 2023 - April 2024



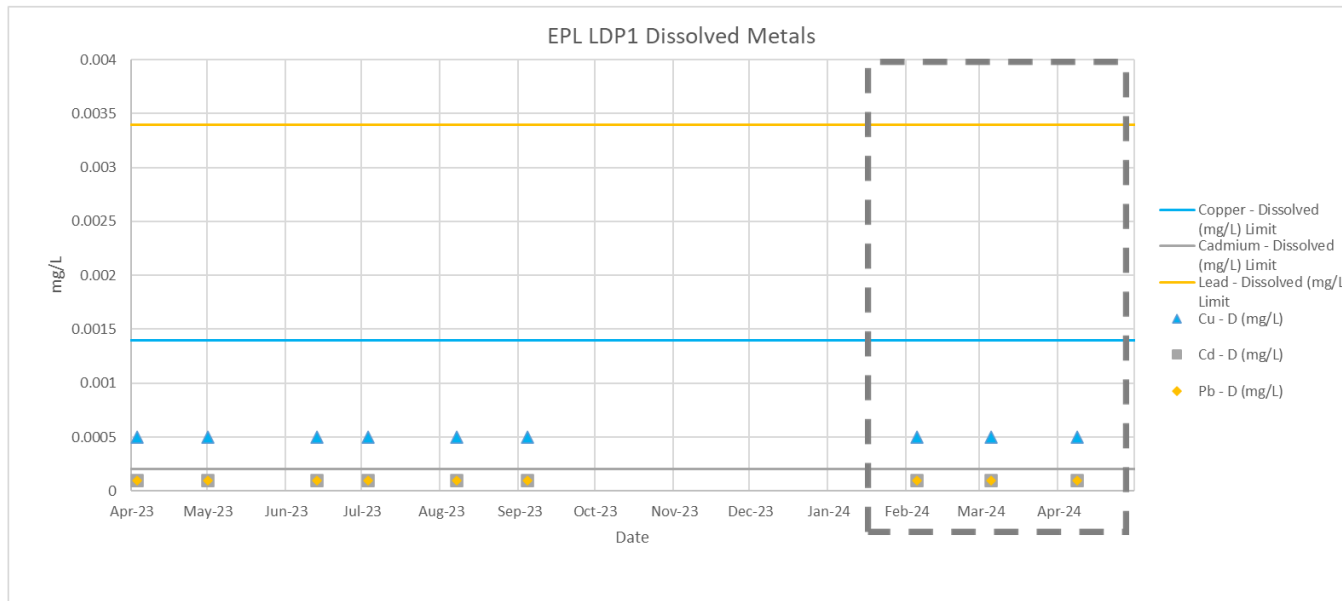
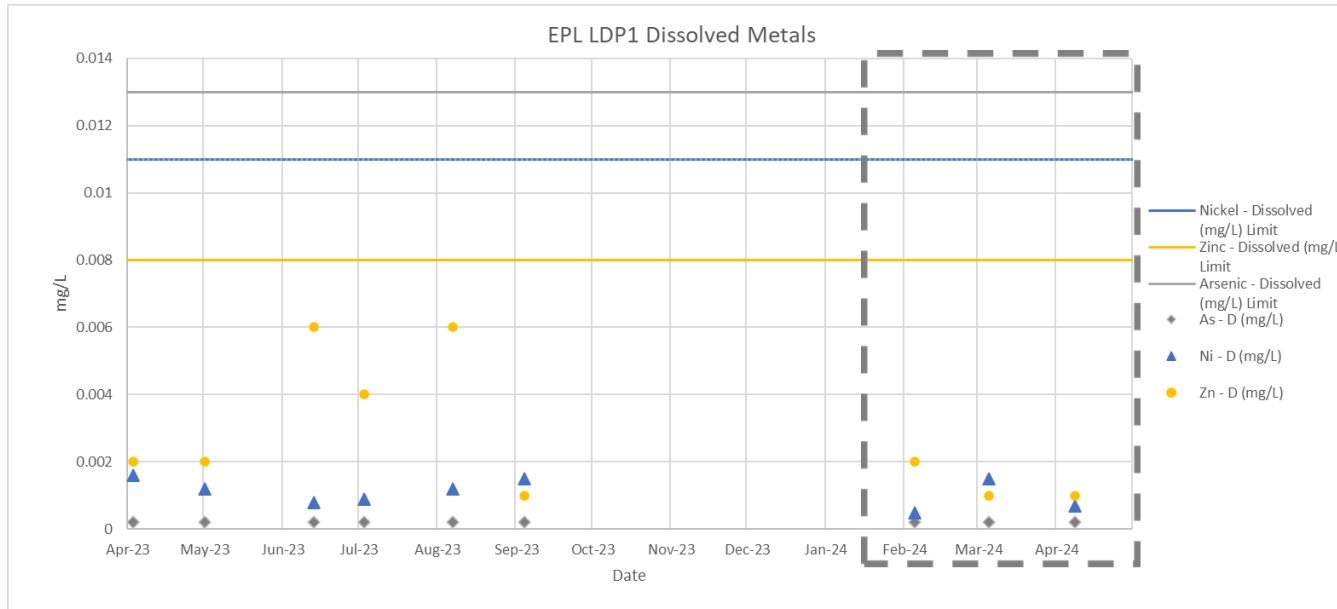
EPA 1 Daily Average EC
April 2023 - April 2024



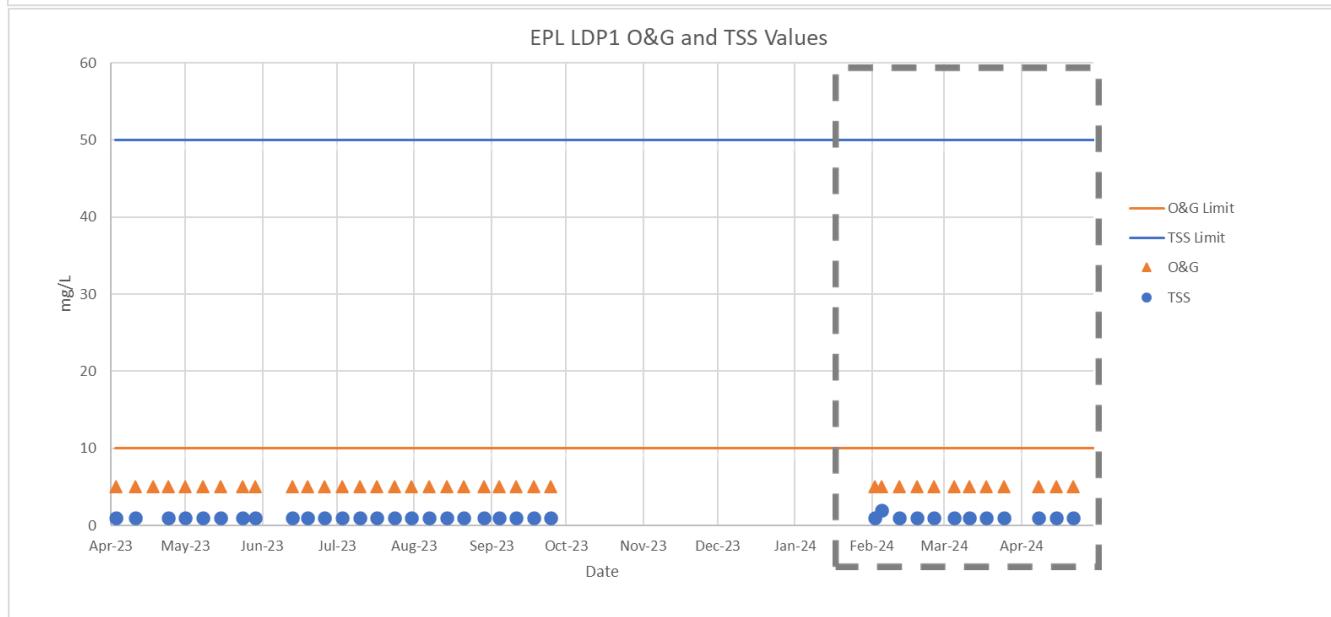
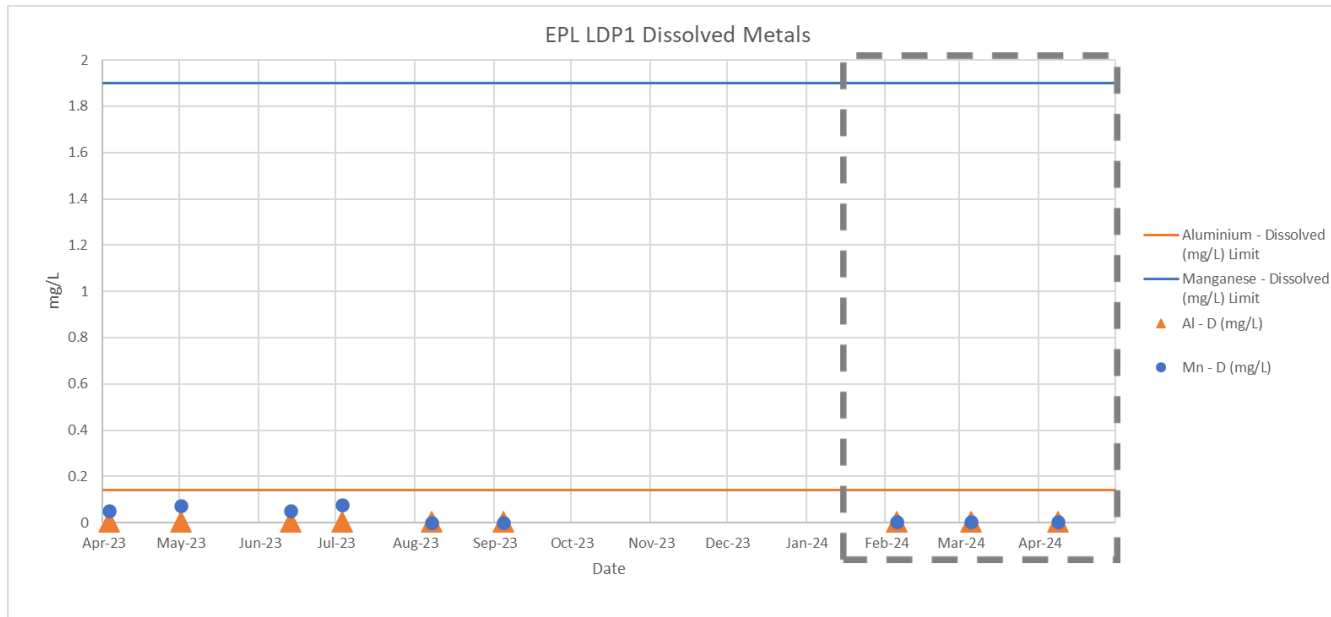
EPA 1 Daily Average Turbidity
April 2023 - April 2024



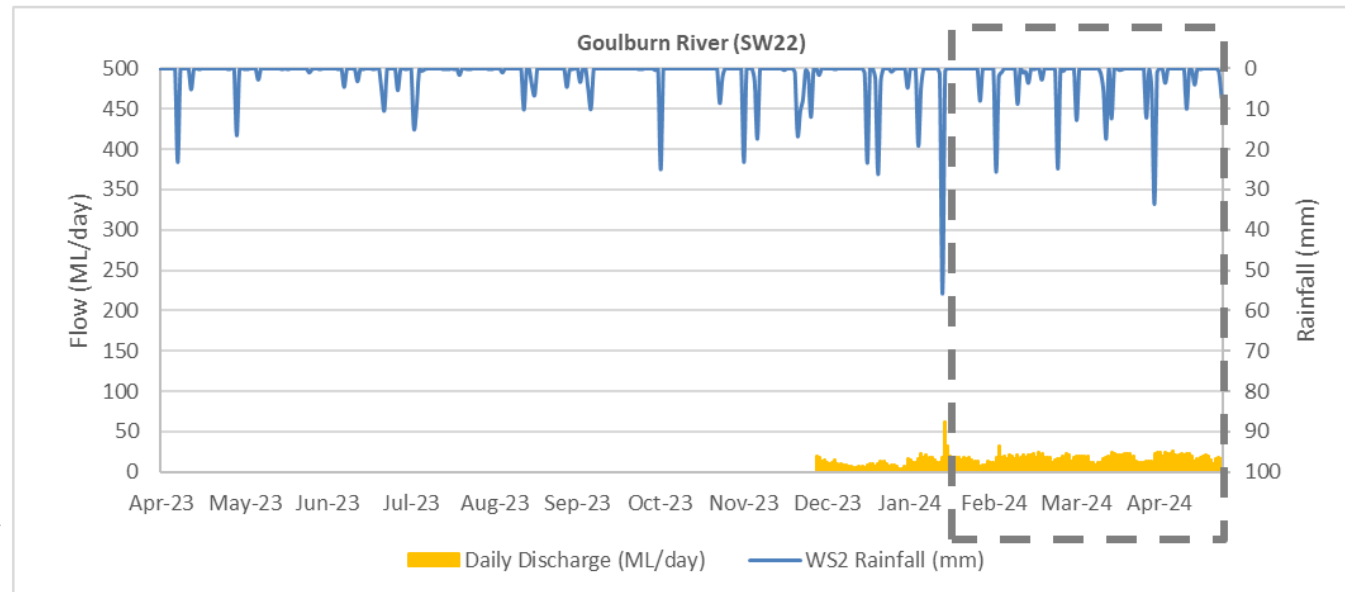
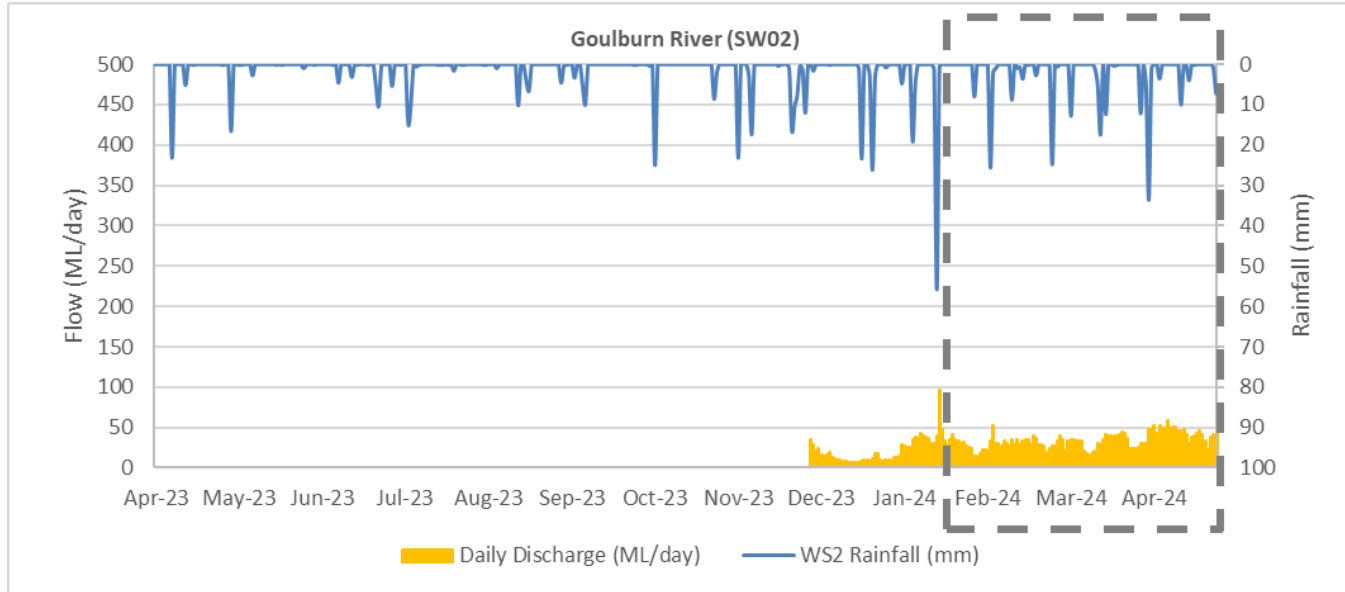
Water Release – EPA01



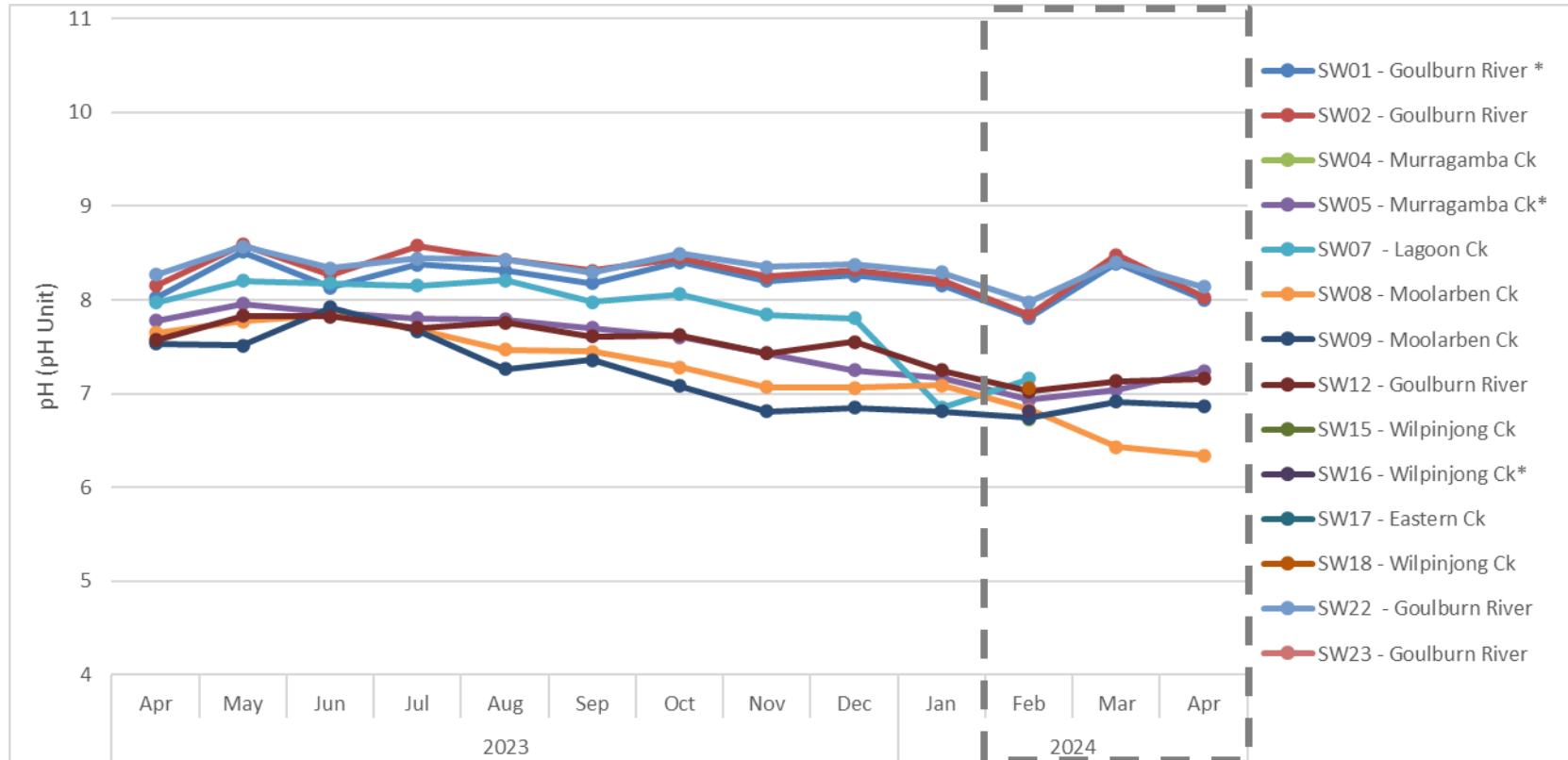
Water Release – EPA01



Stream Flow – Goulburn River

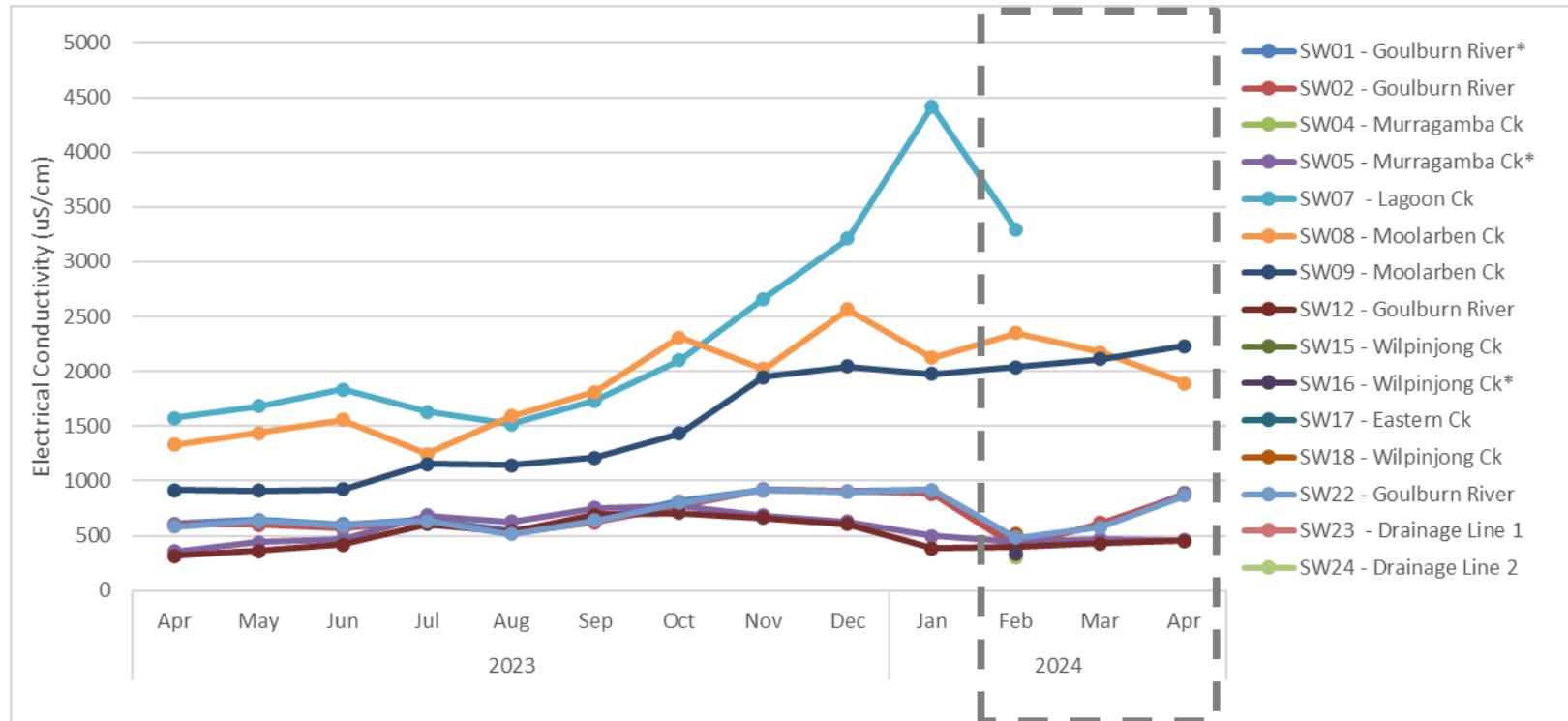


Water Quality - pH



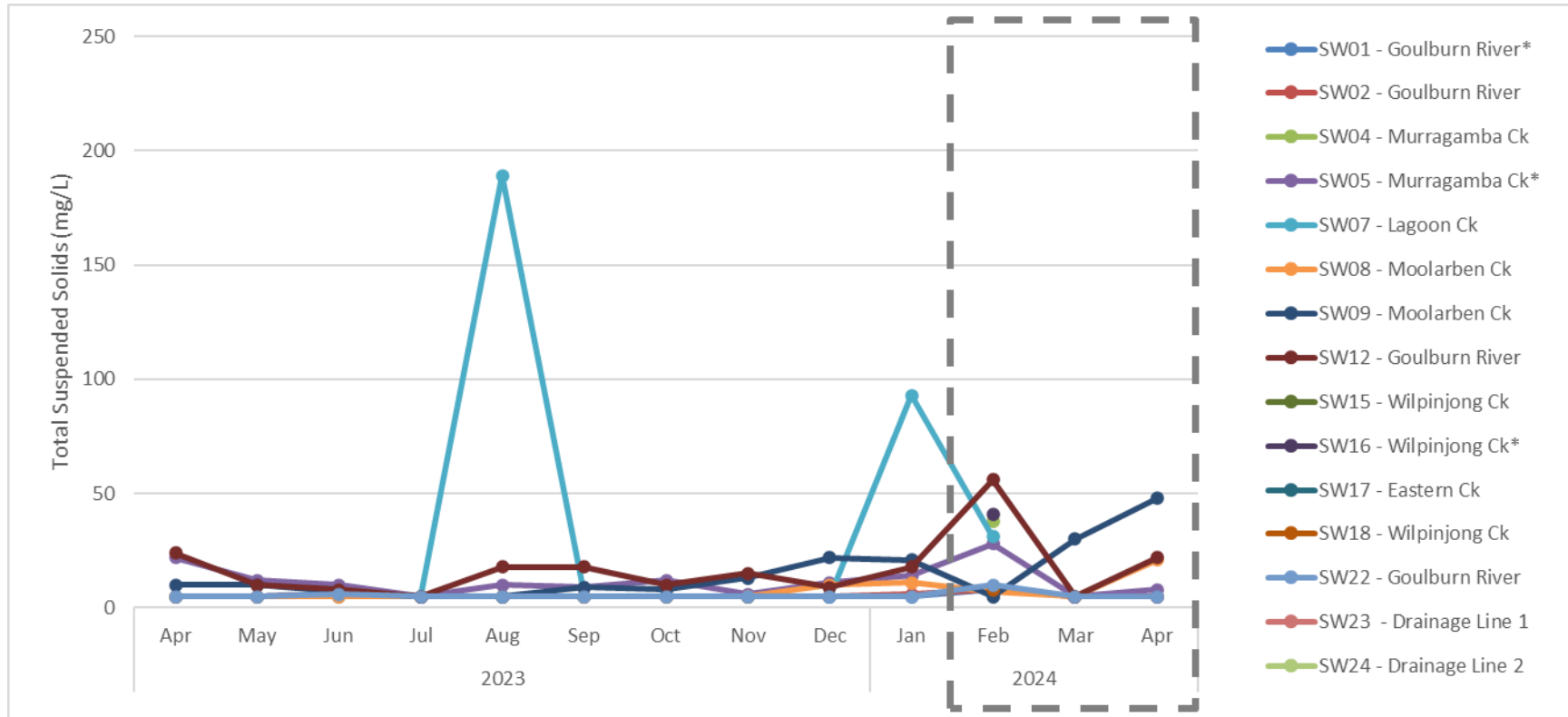
* Monitoring Locations with associated trigger investigation levels as per the Surface Water Management Plan

Water Quality - EC



* Monitoring Locations with associated trigger investigation levels as per the Surface Water Management Plan

Water Quality - TSS



* Monitoring Locations with associated trigger investigation levels as per the Surface Water Management Plan

Air Quality

Site	April 2023 PM10 Annual Average ($\mu\text{g}/\text{m}^3$)	April 2024 PM10 Annual Average ($\mu\text{g}/\text{m}^3$)	Air Quality PM10 Annual Average Criteria ($\mu\text{g}/\text{m}^3$)
TEOM 01	12.3	17.4	25.0
TEOM 07	7.7	11.2	25.0
TEOM 04	11.3	15.1	25.0

Site	April 2023 PM2.5 Annual Average ($\mu\text{g}/\text{m}^3$)	April 2024 PM2.5 Annual Average ($\mu\text{g}/\text{m}^3$)	Air Quality PM2.5 Annual Average Criteria ($\mu\text{g}/\text{m}^3$)
TEOM 07	3.9	5.1	8.0

Monthly monitoring reports are available on our website:

www.moolarbencoal.com.au/page/environment/environmental-monitoring/

Blasting

Site	February 2024 Blast Overpressure (dBL)		March 2024 Blast Overpressure (dBL)		April 2024 Blast Overpressure (dBL)		Limit (dBL)
	Min	Max	Min	Max	Min	Max	
BM1 Ulan School	86.2	106.4	81.3	109.4	82.7	103.6	115/120
BM5 Ridge Rd	86.3	113.0	82.5	113.9	88.4	108.8	115/120
BM8 Moolarben Rd	85.0	125.8	77.8	116.9	84.1	106.8	115/120

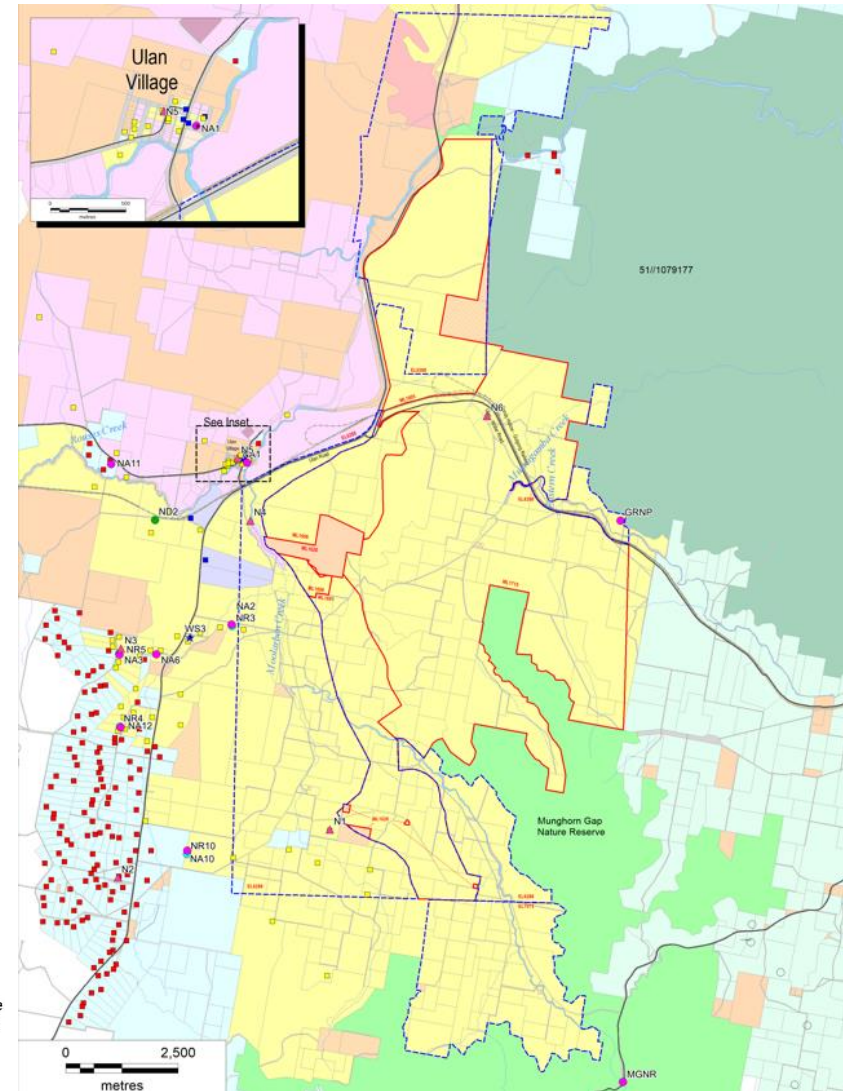
Site	February 2024 Ground Vibration (mm/s)		March 2024 Ground Vibration (mm/s)		April 2024 Ground Vibration (mm/s)		Limit (mm/s)
	Min	Max	Min	Max	Min	Max	
BM1 Ulan School	0.08	0.39	0.15	0.30	0.18	0.31	5/10
BM5 Ridge Rd	0.03	0.20	0.15	0.36	0.14	0.36	5/10
BM8 Moolarben Rd	0.01	0.34	0.16	0.34	0.16	0.47	5/10

Monthly monitoring reports are available on our website:

www.moolarbencoal.com.au/page/environment/environmental-monitoring/

Noise Monitoring

- All monthly & quarterly attended noise monitoring within criteria.
- Continued implementation of:
 - Planning controls - scheduling
 - Engineering controls - attenuation
 - Operational controls - bunds/screens
 - Real-time monitoring triggers
 - Real-time response protocols



LEGEND

- Exploration Licence Boundary
- Mining Lease Boundary
- Rail Line
- Watercourse

Ownership

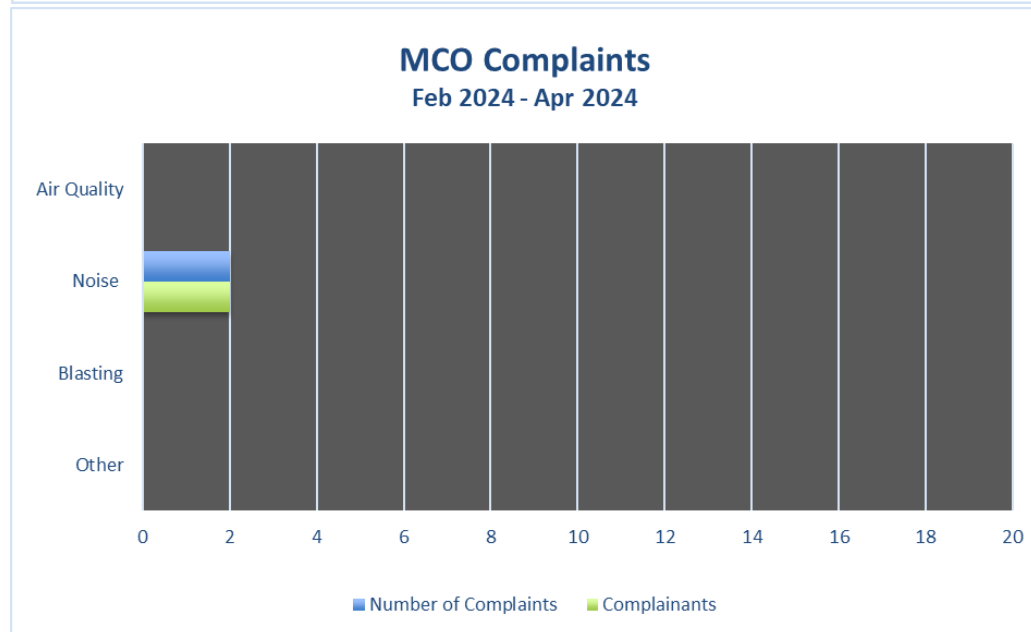
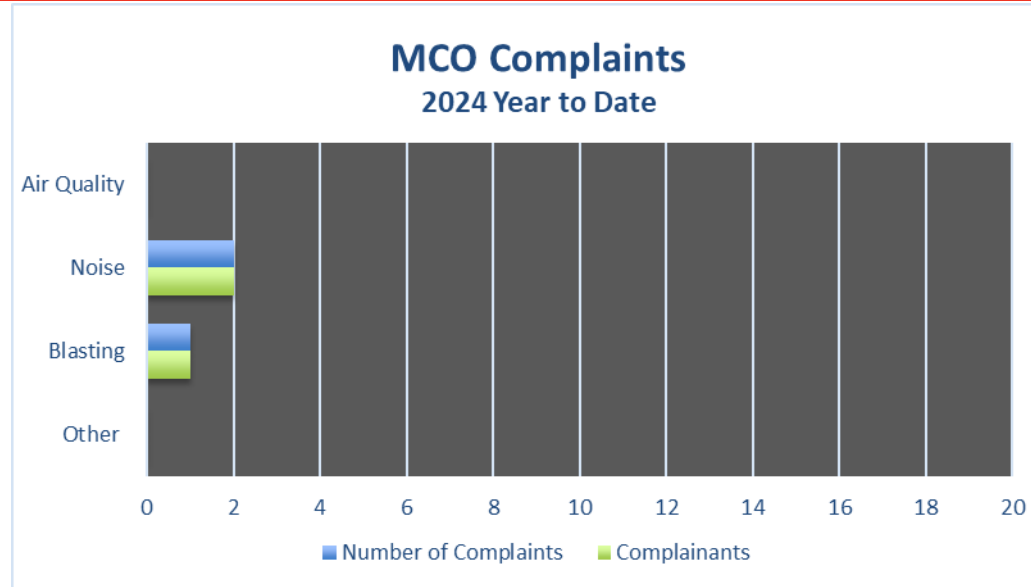
- Yancoalg
- Ulan Coal Mines Limited
- Wilpinjong Coal Mine
- Privately Owned
- Crown
- Commercial

- National Park
- Nature Reserve
- Mine Owned Receiver
- Private Receiver
- Commercial Receiver

Noise Monitoring Locations

- Real-time Noise Monitoring Site
- Attended Noise Monitoring Site
- Directional Receiver
- Background Noise Monitoring
- Weather Station

Community Complaints



Rehabilitation Update

- Landform establishment is in progress in OC2, OC3 and OC4.
- Rehabilitation maintenance works are continuing.



Biodiversity Offset Areas Update

- Offset maintenance works have continued, with feral animal baiting and weed management programs continuing.
- Autumn monitoring completed
- Planting has been undertaken within Ulan 18, Bobadeen, & Dun Dun Biodiversity Offset Areas.
 - Approximately 31,000 plants were planted across the Biodiversity Offset Areas.

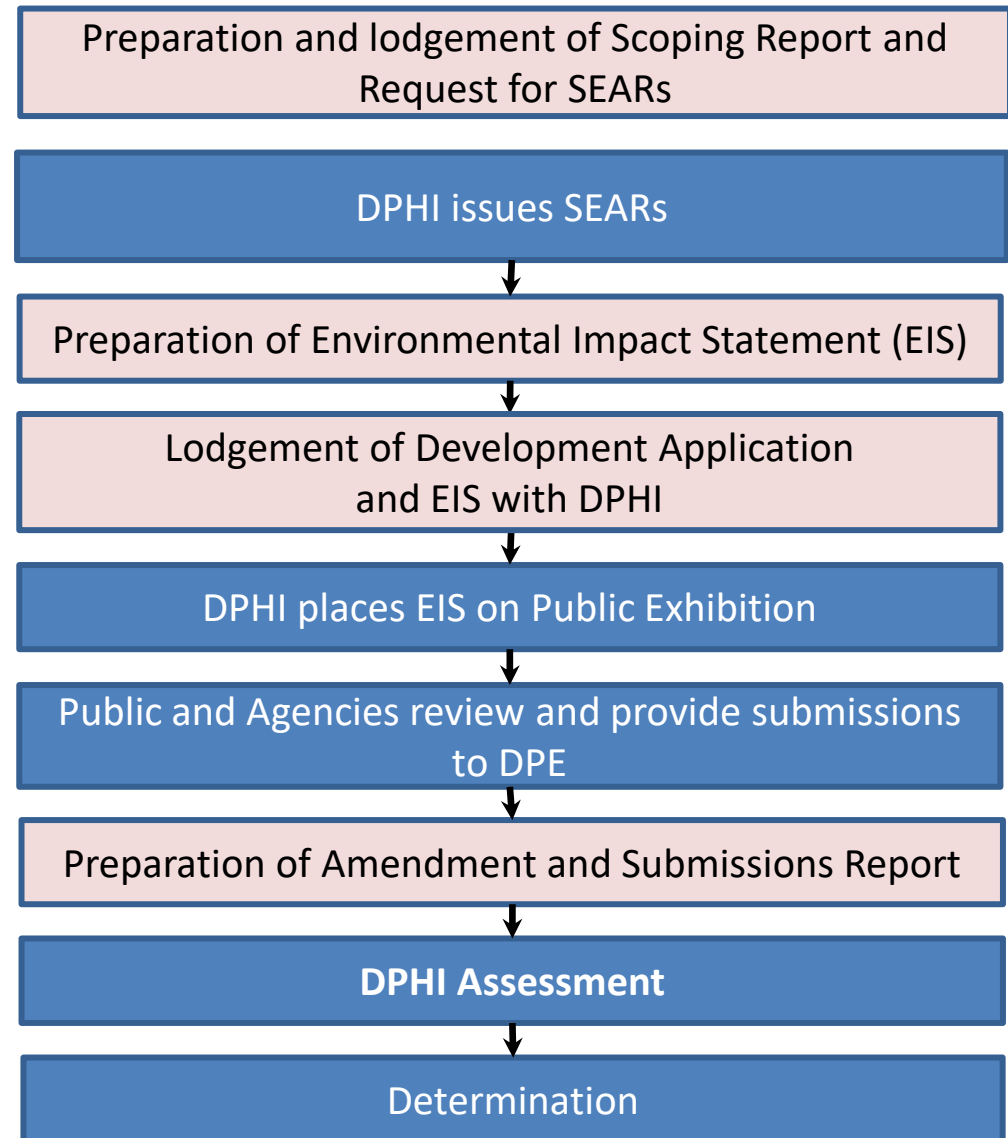


OC3 Extension – Amended Project

Progress of OC3 Extension Project Assessment

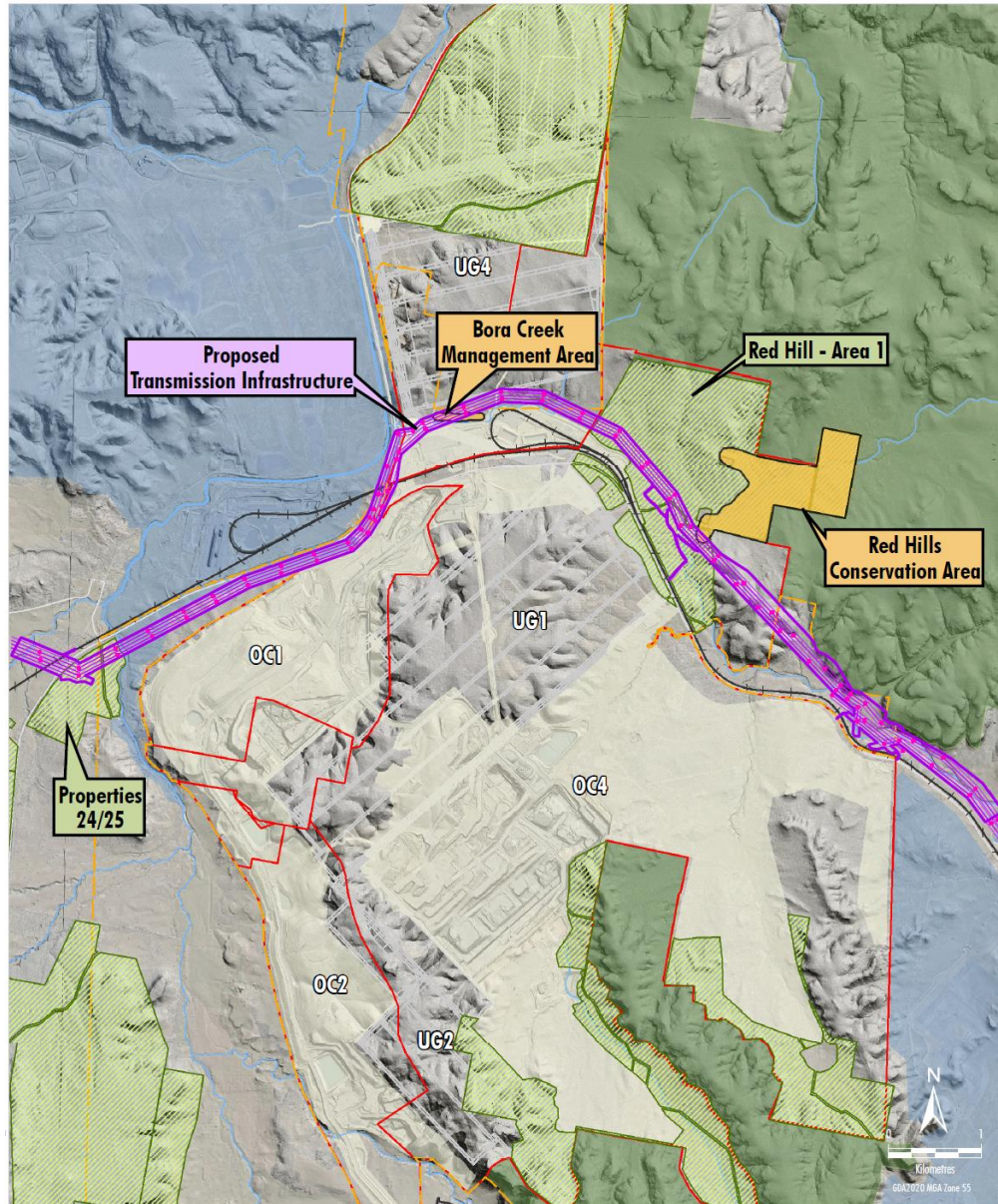
- Amendment and Submissions Report lodged in March 2024.
- DPHI undertaking assessment of Amended Project with input from Agencies and Independent Expert Advisory Panel for Mining.

Current Status →



NSW EnergyCo Transmission Infrastructure

- Proposed NSW EnergyCo transmission infrastructure intersects:
 - Two approved biodiversity offset properties (one is EPBC offset).
 - Two Aboriginal heritage management areas.
 - Mining infrastructure areas.
- Modifications to MCO's project approval and EPBC Approval is required to accommodate the proposed infrastructure.



Employment Update

Current Traineeships

- 20 Trainees currently onsite
 - 13 Underground Trainees
 - 7 Open Cut Trainees

Apprentices

- 31 Apprentices currently onsite
 - 11 Underground Apprentices
 - 12 Open Cut Apprentices
 - 8 Coal Handling and Preparation Plant (CHPP) Apprentices

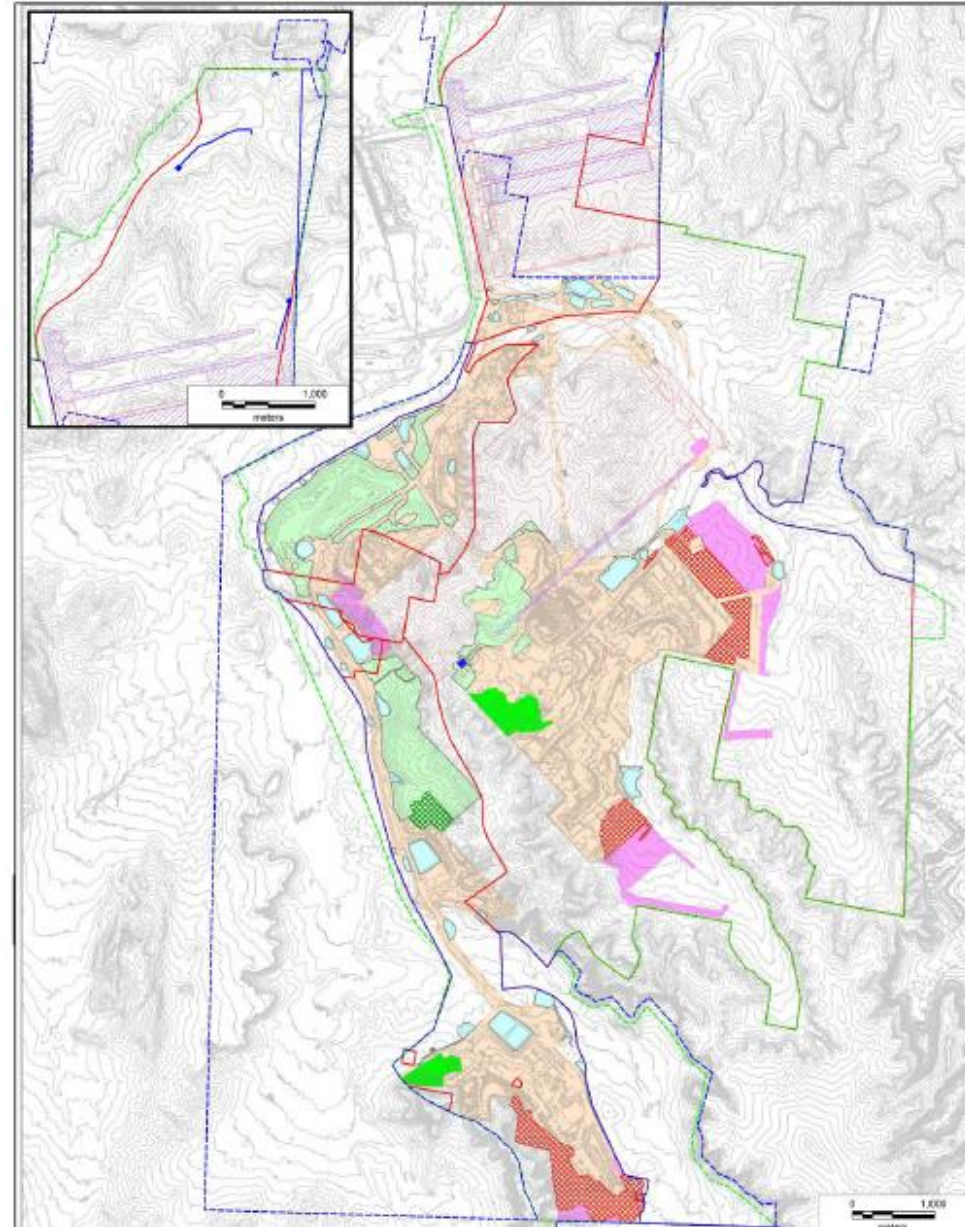


2023 Annual Review Summary

- Activities During the Reporting Period
- Environmental Performance
- Water Management
- Rehabilitation
- Community

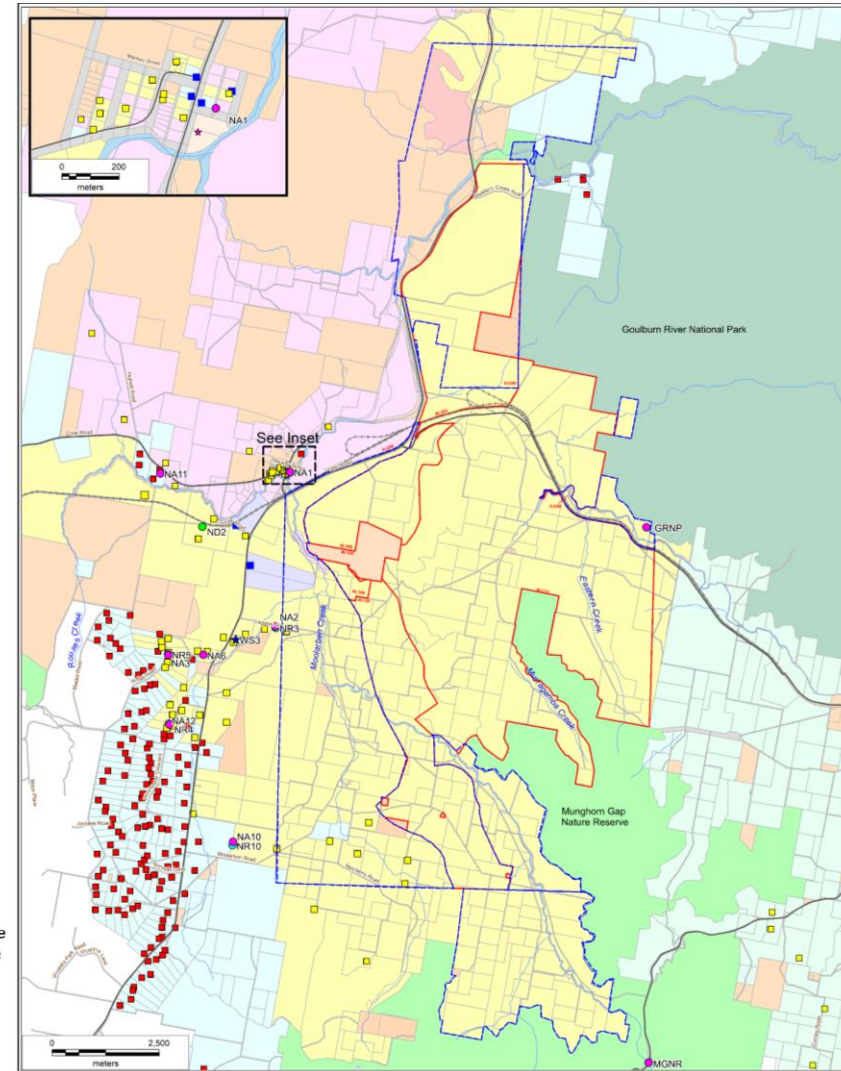
Activities During the Reporting Period

- Mining operations in OC1, OC2, OC3, OC4, and UG4
- Secondary extraction undertaken in Longwall LW402 and LW403
- Progressive rehabilitation in OC2 and OC4
- Upgrade of the Water Treatment plant and associated infrastructure, water management infrastructure and upgrade works associated with the CHPP
- 16.7Mt product coal
- Exploration in EL6288 and EL7073



Noise, Blasting and Air Quality

- **Noise**
 - All attended noise monitoring within criteria.
- **Blasting**
 - No reportable fume events.
 - All overpressure and vibration results within criteria.
- **Air Quality**
 - Annual average PM10 and PM2.5 within criteria.
 - All dust deposition results below criteria.



LEGEND

- Exploration Licence Boundary
- Mining Lease Boundary
- Rail Line
- Watercourse

Ownership

- Yancoal
- Ulan Coal Mines Limited
- Wilpinjong Coal Mine
- Privately Owned
- Crown
- Commercial

- National Park
- Nature Reserve

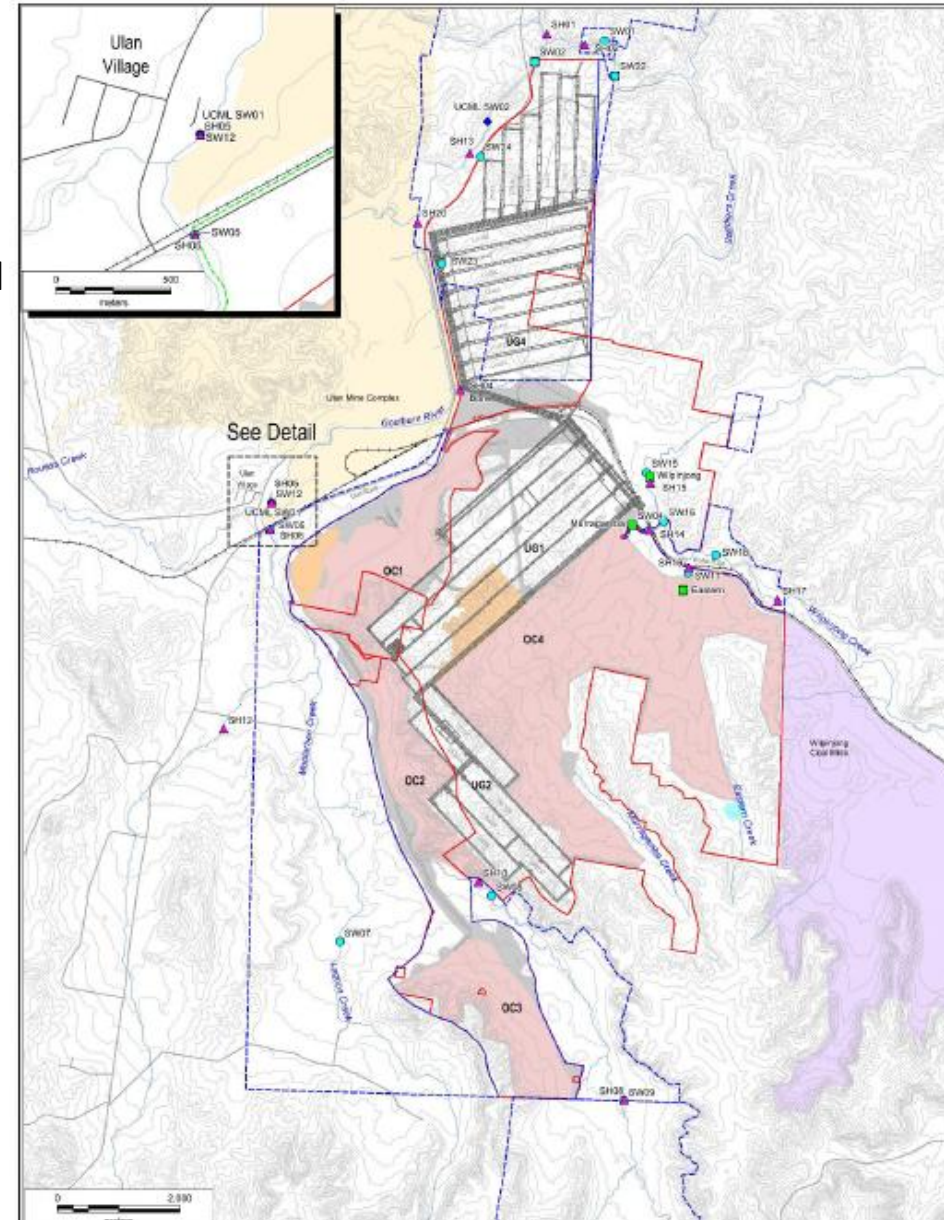
- Mine Owned Receiver
- Private Receiver
- Commercial Receiver

Noise Monitoring Locations

- Real-time Noise Monitoring Site
- Attended Noise Monitoring Site
- Directional Receiver
- Background Noise Monitoring
- Weather Station

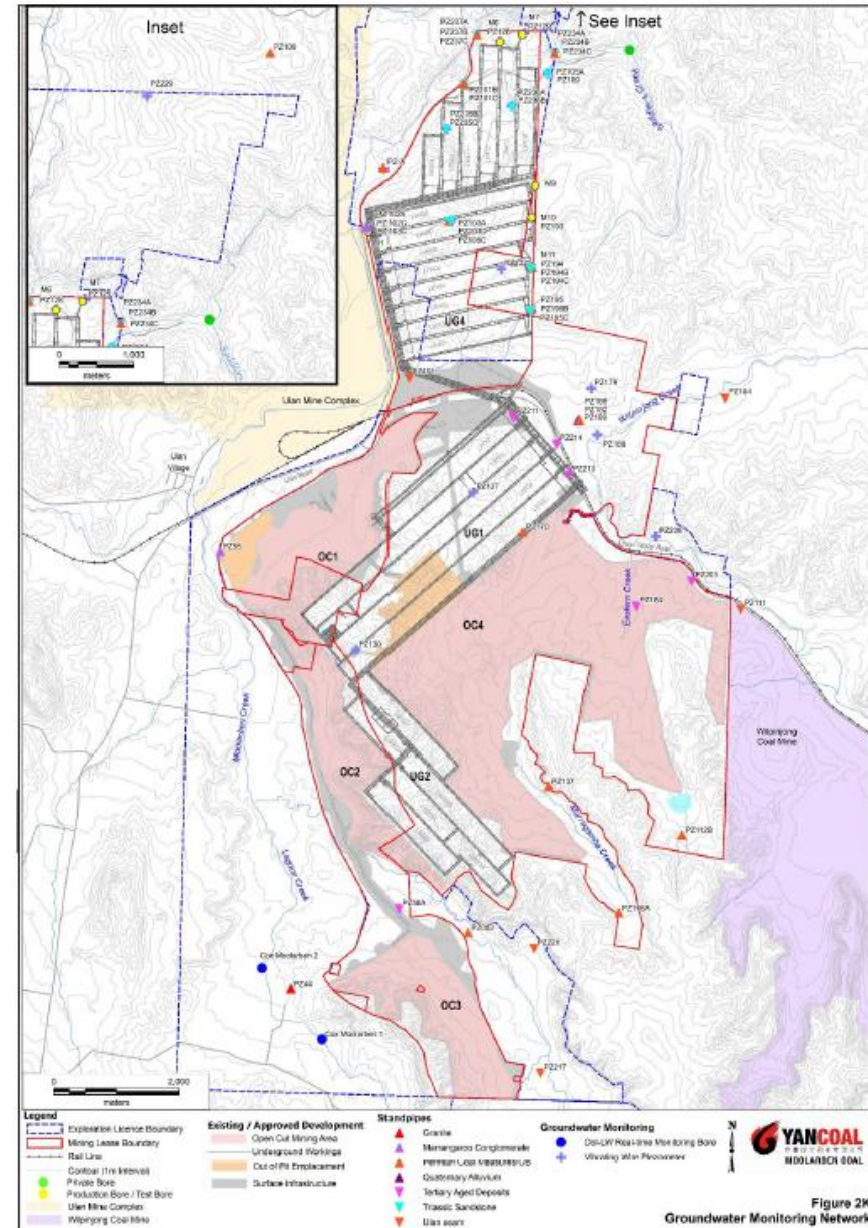
Water

- Water**
 - Below average rainfall (510.8mm vs Avg of 651.2mm).
 - 3,438 ML of water discharged.
 - Surface water influenced by climatic conditions and generally consistent with historical range.
- Stream Health**
 - Aquatic habitat condition influenced by a shift in prevailing wet weather patterns to below average rainfall and prolonged dry conditions.
 - Climatic factors and flow regimes continue to be the dominant influence on aquatic ecology.
- Channel Stability**
 - Stability was variable within each creek.
 - The 2023 channel stability trends were generally comparable to previous result



Groundwater

- MCO monitors a network of piezometers in accordance with the Groundwater Management Plan. The monitoring program includes monthly monitoring of standing water level in standpipes, and pressures for vibrating wire piezometers.
- Groundwater level trends during 2023 were influenced by the Rainfall Cumulative Deviation (RCD), Underground mining operations, open cut mining operations and regional depressurisation.
- Permian bores exhibited a range of levels associated with proximity to mining, strata interval monitored and location.
- Groundwater levels in Triassic bores remained relatively stable over the period except for PZ192_68m due to its proximity to UG4 mining.
- The groundwater level in PZ213 exceeded the trigger level and an investigation by a third party was undertaken according to the GWMP Trigger Action Response Plan (TARP).



Mine Subsidence

- Subsidence impacts during the period were consistent with predictions. Vertical subsidence was generally below predictions.
- No performance measures exceeded.
- No built features impacted by subsidence.



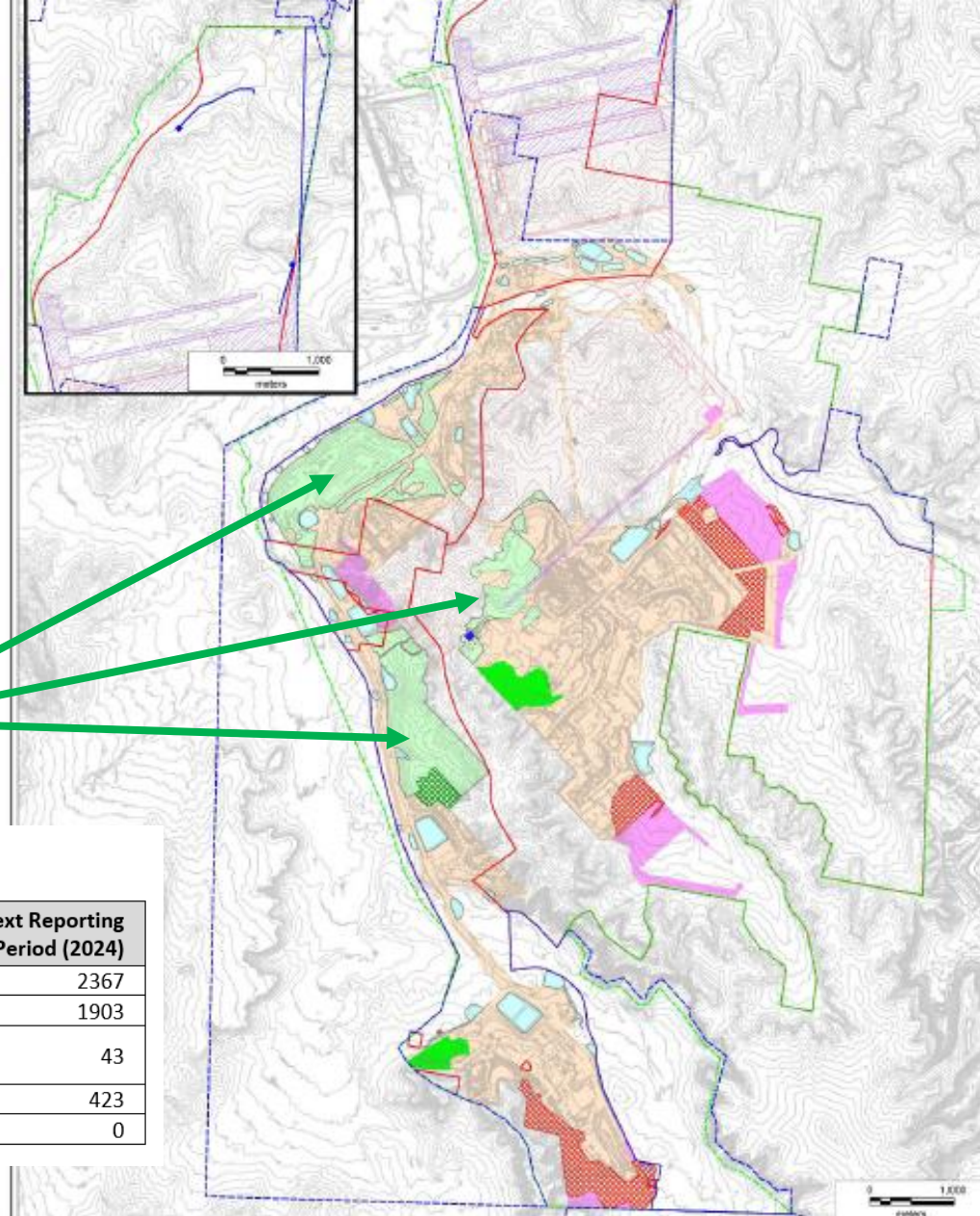
Comparison of maximum observed and predicted vertical subsidence, tilt & strain for the K, L, M, S & R Line.

Survey Line	Type	Maximum vertical subsidence (mm)	Maximum tilt (mm/m)	Maximum tensile strain (mm/m)	Maximum compressive strain (mm/m)
K	Measured	1584	49	13	17
	Predicted	1800	70	> 30*	> 30*
L	Measured	1233	26	11	2.6
	Predicted	1800	35	12*	13*
M	Measured	1778	39	4	13
	Predicted	1800	50	23*	26*
S	Measured	1397	20	7.7	10
	Predicted	1800	30	9.5*	8*

* denotes that the values represent the conventional strains based on the predicted curvatures multiplied by a factor of 10.

Rehabilitation

- **Activities**
 - Progressive rehabilitation in OC2 and OC4.
 - Maintenance of existing rehabilitation has continued.
- **Status**
 - 90ha Landform Establishment.
 - 373ha Ecosystem and Landuse Establishment to date.



Mining and Rehabilitation Status

Mine Area Type	Previous Reporting Period (2022)	This Reporting Period (2023)	Next Reporting Period (2024)
Total Mine Footprint	2030	2187	2367
Total Active Disturbance	1619	1724	1903
Land being Prepared for Rehabilitation	53	90	43
Land under active Rehabilitation	358	373	423
Completed Rehabilitation	0	0	0

Legend

-
-
-
-
-
-
-
-
-
-
-
-
-

Incidents, Compliance and Complaints

■ Incidents and non-compliances

- On 28 March 2023, overburden material was inadvertently placed beyond the approved disturbance boundary in Open Cut 4. MCO self-reported the incident on 29 March 2023.
- EPL Discharge Point 01 was not sampled for Total Suspended Solids (TSS) during the week of 17 April 2023. MCO self-reported the missed sample on 26 May 2023.

■ Complaints

- 18 direct complaints from 9 complainants.
- Decrease from the previous reporting period.
- 67% of complaints were received from 3 complainants.
- “Other” the primary complaint category.

Community

■ Engagement

- Mid-Western Regional Senior Festival.
- Mudgee Running Festival.
- Max Potential Program at Club Mudgee.

■ Community Support

- Donations and sponsorships provided across 45 local groups and organisations.



