



FOUNDED ON SHARED VALUES   
Focused on Australian futures

# MOOLARBEN COAL COMPLEX OPEN CUT EXTENSION PROJECT COMMUNITY NEWSLETTER

## JUNE 2021

*This newsletter is the first in a series that will update you on the proposed Moolarben Coal Complex Open Cut Extension Project. This first edition provides an overview of the Project, plus information about how you can be involved.*

*Future newsletters will be distributed as the Project progresses.*

---

**As pictured above:** A1 Earthworx Mining & Civil has partnered with Yancoal at the Moolarben mine since its construction phase. Guidance and support from Yancoal has helped the business grow, and also assisted in improving its systems and procedures.

Chris, A1 Earthworx's General Manager, is proud that the business has been involved throughout the full-mining cycle at Moolarben, from exploration to rehabilitation, and he sees a bright future for sustainable mining practices.

Yancoal's contribution to businesses and the local community has been wide-reaching and has added to the region's prosperity.

---

### ■ EXISTING OPERATIONS

The Moolarben Coal Complex is located approximately 40 km north of Mudgee in the Western Coalfield of NSW. Moolarben is operated by Yancoal Australia Limited.

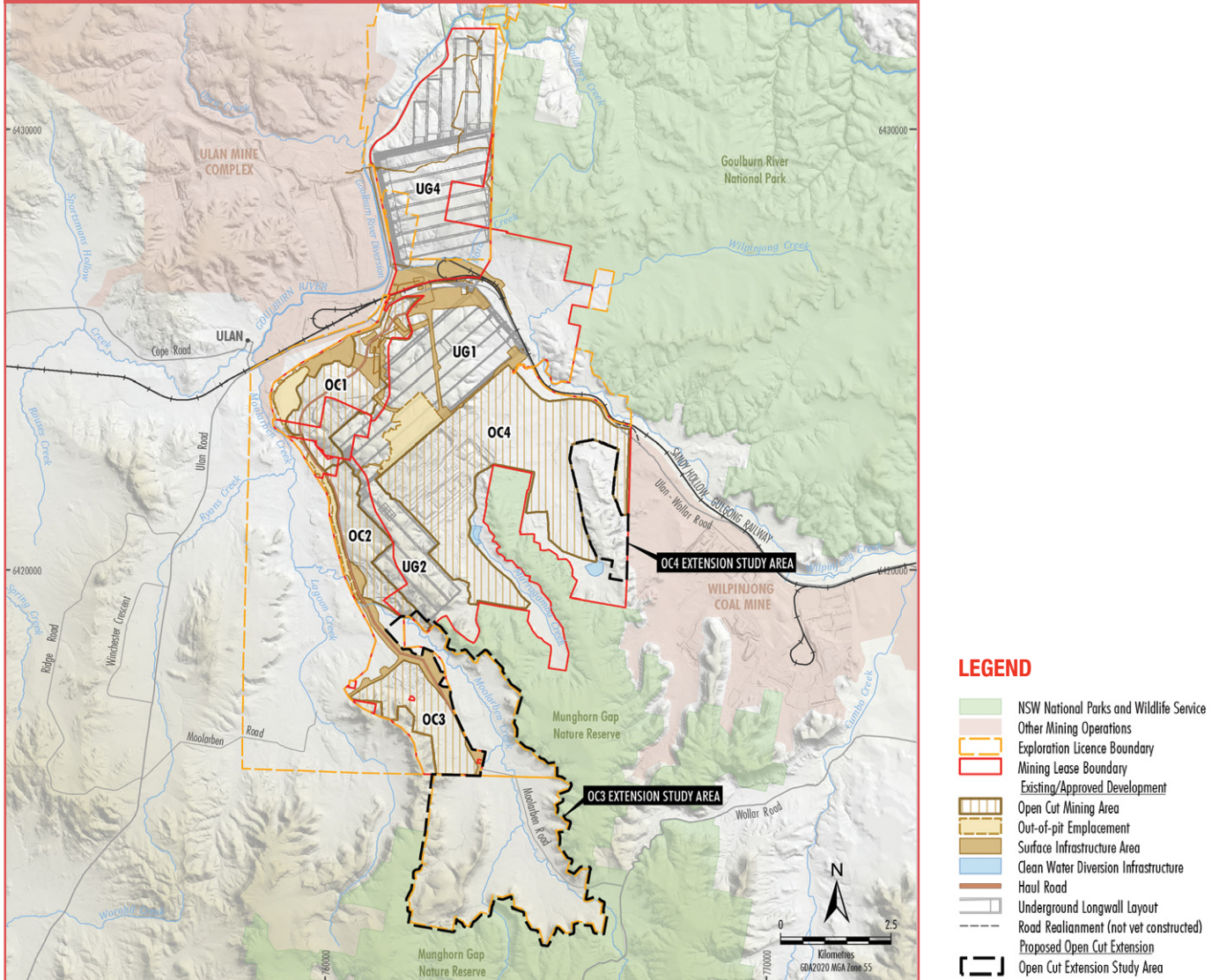
Moolarben currently comprises four open cut mining areas (OC1 to OC4), three underground mining areas (UG1, UG2 and UG4) and other mining related infrastructure, including coal processing and transport facilities.

Mining operations are currently approved until 31 December 2038.

Moolarben has taken a staged approach to development. This has given Moolarben time to study and understand the geological and environmental setting and to plan for progressive extraction of valuable coal resources.

Moolarben is proposing to continue this staged development approach and is investigating opportunities to extend open cut operations to the south and east. These operations are planned to be integrated with the current complex, with shared employees, equipment, infrastructure and facilities.

## OPEN CUT EXTENSION PROJECT STUDY AREAS



### PROPOSED PROJECT

Moolarben is investigating options to extend the current open cut operations at the site. Baseline studies have commenced in two study areas within existing tenements, to inform consideration of:

- Extending OC3 south; and
- Extending OC4 east.

The scope of the Project is being developed and will be informed by further baseline environmental studies, technical studies and engagement with key stakeholders, including Government agencies and the community. Moolarben is also investigating an extension to the operational mine life from 2038 to approximately 2045, to enable the extension of mining and allow for continued employment of the existing MCC workforce and other flow-on benefits to the State, regional and local economies. The Project plans to utilise existing infrastructure and facilities, where possible, and to maintain existing production rates.

### APPROVALS REQUIRED

The Project will require State government planning approval under the NSW *Environmental Planning and Assessment Act 1979*. A development application will be submitted to the NSW Department of Planning, Industry and Environment, supported by a detailed Environmental Impact Statement (EIS).

The Project will also require approval under the Commonwealth *Environment Protection and Biodiversity Conservation Act 1999* (EPBC Act).

## ■ SCOPING REPORT

The first step in the approval process is to prepare a Scoping Report and apply for Secretary's Environmental Assessment Requirements (SEARs). The Scoping Report will provide an initial description of the proposed Project, identify key environmental matters for assessment in the EIS (informed by stakeholder consultation) and set out the community engagement program. The SEARs will confirm the assessment requirements for the Project EIS.

**The Scoping Report is currently being prepared and submission is expected in late 2021.**

## ■ SOCIAL IMPACT ASSESSMENT

A key component of the Scoping Report and Project EIS is the social impact assessment. The social impact assessment will identify and assess potential social impacts and benefits of the Project.

A specialist social impact consultant will undertake focused engagement with key stakeholders on behalf of Moolarben. If you would like to participate in the social impact assessment, please register your interest by emailing [moolarben.feedback@yancoal.com.au](mailto:moolarben.feedback@yancoal.com.au) or calling 1 800 626 622.

## ■ APPROVAL PROCESS AND STAKEHOLDER ENGAGEMENT

Stakeholder engagement will occur during 2021 and 2022, with the planning application currently planned to be lodged in mid-2022.

## APPROVALS PROCESS

MILESTONES	OPPORTUNITIES FOR FEEDBACK
<ul style="list-style-type: none"><li>✓ Moolarben commences scoping phase consultation and preparation of Scoping Report</li></ul>	<p>We will engage with key stakeholders during preparation of the Scoping Report to ensure community issues and concerns with the Project are adequately identified and scoped.</p>
<ul style="list-style-type: none"><li>○ Moolarben submits Scoping Report and requests SEARs from NSW Dept. of Planning</li></ul>	<p>Focused engagement will also inform the preliminary social impact assessment component of the Scoping Report.</p>
<ul style="list-style-type: none"><li>○ Moolarben lodges a Referral under the Commonwealth EPBC Act</li></ul>	
<ul style="list-style-type: none"><li>○ Moolarben undertakes EIS phase consultation and prepares the Project EIS</li></ul>	<p>We will engage with key stakeholders and the local community during preparation of the EIS to ensure community issues and concerns are considered in the Project design and addressed in the EIS.</p> <p>The EIS will be prepared by suitably qualified experts and will include detailed assessments of potential environmental, social and economic impacts and benefits of the Project. The EIS will also identify suitable management and mitigation measures to address the potential impacts of the Project.</p> <p>Focused engagement will also inform the social impact assessment component of the EIS.</p>
<ul style="list-style-type: none"><li>○ Moolarben submits development application to NSW Dept. of Planning and the Project EIS is placed on public exhibition</li></ul>	<p>The community has an opportunity to submit feedback directly to NSW Dept. of Planning during the public exhibition period.</p>
<ul style="list-style-type: none"><li>○ Moolarben responds to submissions made during public exhibition</li></ul>	<p>We will engage with the community, as necessary, to address concerns raised during public exhibition.</p> <p>We will also provide a written response to submissions.</p>
<ul style="list-style-type: none"><li>○ NSW Dept. of Planning assesses the Project, having regard to Moolarben's EIS, public and agency submissions and Moolarben's response to these submissions</li></ul>	<p>Community feedback can continue to be provided to Moolarben or the NSW Dept. of Planning while the Project is under assessment.</p>
<ul style="list-style-type: none"><li>○ Independent Planning Commission determines the Project</li></ul>	<p>Independent Planning Commission will hold a public hearing.</p>
<ul style="list-style-type: none"><li>○ Commonwealth Minister for the Environment makes separate determination under the EPBC Act</li></ul>	<p>Conditions of approval likely to require ongoing community consultation.</p>





**WE VALUE**

*Our morning regulars*

**As pictured above:** Mudgee Bakery & Cafe is an institution that has been serving the town and the surrounding region for over 30 years. It is a thriving business employing up to 45 people, keeping local workers fed and caffeinated. It has a special connection with the mining sector, serving hundreds of daily regulars, who drop by on their way to and from work at the local mines. The bakery also has a connection with Yancoal, with family members employed at the Moolarben mine located around 40 kilometres outside of the town.

#### **UG2 Modification**

Moolarben is also investigating options to optimise the UG2 mining domain. Optimisations include extending underground mining to the south-east and increasing the maximum extraction height from 3.0 to 3.5 metres. Approval will be sought via a separate Section 4.55 modification application to Project Approval (08\_0135), which is planned to be lodged later this year.

If you would like further information on the proposed Project or have any questions regarding Moolarben Mine, please do not hesitate to contact us.

Email: [moolarben.feedback@yancoal.com.au](mailto:moolarben.feedback@yancoal.com.au)  
Phone: 1 800 626 622  
Web: [www.moolarbencoal.com.au](http://www.moolarbencoal.com.au)

 **YANCOAL**  
兗煤澳大利亚有限公司  
MOOLARBEN COAL