

Multi-million dollar investment in noise reduction

Moolarben Coal's Stealth Fleet was recognised for its environmental excellence at a NSW Minerals Council's awards ceremony recently.

Moolarben Coal listened to community concerns and invested more than \$2 million in a fleet of trucks to reduce noise when loading. The initiative won them a finalists position, placing them highly commended at the Community and Environment Excellence Awards.

Unlike regular dump truck bodies, Duratray design is comprised of rubber wall and floor liners. The suspended floor is supported by elastomeric ropes that are connected to the steel frame. These materials dampen the noise when rock is dropped in the tray.

This investment by Moolarben Coal is setting a new industry benchmark for environmental noise reduction impacts on the community.

Moolarben Coal's Bruce Birchall (left) and Luke Bowden proudly accepting the award from NSW Minerals Council CEO Stephen Galilee (centre).



MOOLARBEN NEWS

SEPTEMBER 2013



More than \$275,000 has been donated to community groups in the past three years through the Moolarben Coal Community Support Program.

Mudgee Marathon competitors Dani Andre and local doctor Alex Ghanem accepting their winners trophies.

Funding supports crucial community projects

The program provides funding to a range of community-focused initiatives across the Mid-Western Council district.

Recently, 10 community organisations received more than \$27,000 from the program in the second round of three funding announcements for 2013.

Some of the projects funded included a new thermal imaging camera for Gulgong DC Rural Fire Brigade, renovations to Mudgee tennis courts, training and fitness equipment for Mudgee Amateur Softball Association and a mounting ramp for Mudgee Riding for the Disabled.

Moolarben Coal Community Relations Coordinator, Scott Fittler, said it was important for Moolarben Coal to invest in local organisations that make our community such a great place to live.

"We are excited to be able to provide assistance to such valuable community-focused organisations. Without the

dedicated staff and volunteers of these companies we wouldn't have such a vibrant and inclusive community," Mr Fittler said.

"The Community Support Program is our way to say thanks to these hardworking and dedicated individuals."

Recently the results of a donation to the Marathon at the Mudgee Running Festival were evidenced when more than 600 runners converging on Mudgee for the successful event in August.

The Moolarben Community Support Committee is now calling for nominations from all sections of our local community.

To participate in the final round of Moolarben Coal funding for 2013 applications must be received by 7th October.

Applications are available at www.moolarbencoal.com.au

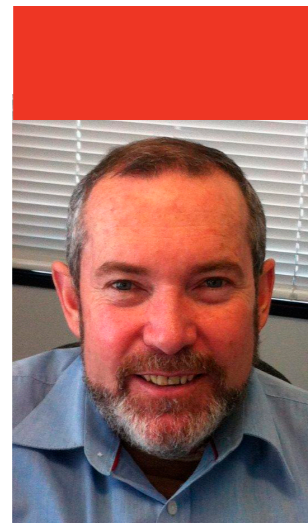
PROGRAM	PROJECT	GRANT
Mudgee Junior Rugby League	Supply Of First Aid Kits	\$613
Riding For The Disabled (Mudgee)	Mounting Ramp	\$1,500
Gulgong Rural Fire Brigade	Thermal Imaging Camera Project	\$2,750
Mudgee District Tennis Club	Renovate Tennis Courts	\$10,000
Mudgee High School	Literacy Program	\$4,000
Mudgee Basketball Association	Gulgong Junior Basketball	\$900
Gulgong District Pony Club	Portable Dressage Arena	\$1,040
Mudgee Amateur Softball Association	Training And Fitness	\$1,000
Rylstone/ Kandos Volunteer Search and Rescue	Vehicle Update	\$1,000
NSW Police Country Cup	2013 Police County Cup	\$5,000
TOTAL		\$27,803



Environmental and community enquiries

Scott Fittler Community Relations Coordinator
Phone 02 6376 1500 or email sfittler@moolarbencoal.com.au

moolarbencoal.com.au



MESSAGE FROM THE GENERAL MANAGER

I am very proud to have been recently appointed as the General Manager of Moolarben Coal Operations. Over just a few years, Moolarben Coal has developed a number of industry leading attributes which place the mine strongly at the forefront of mining performance, as demonstrated by the excellent results achieved in 2013.

Although I joined Yancoal at Moolarben from an expat position in the UK, most of my career to date has been in Coal Mining in Queensland. I have lived and worked in a number of smaller western Queensland communities over 23 years and I must say, although I have enjoyed all the communities in which my family have lived, I have never experienced anything as great as the Ulan – Gulgong – Mudgee District. The area is very picturesque, well serviced and has no shortage of facilities. There is nearly always something going on or coming up and even rarely when there's not, there is plenty to do, signifying a strong, supportive community spirit. At Moolarben we are continually aware of our community responsibilities and endeavour to minimise any mining impacts on the diverse and close-knit communities surrounding the mine, particularly the Ulan Village.

A significant production milestone for Moolarben was achieved on Tuesday 10th September with 25.0 million tonnes of ROM Coal being mined and processed. I congratulate everyone who has helped make Moolarben Coal mine such a successful operation – all of our personnel, suppliers, contractors and everyone who has contributed positively to our development.

This year we have taken delivery of a number of very large pieces of heavy mobile equipment for our planned Stage 2 expansion, although Moolarben Coal Operations continues to follow our Stage 1 approvals production regime. Unfortunately we are still awaiting our draft consent conditions for Stage 2 from the Department of Planning and Infrastructure, so we can take the next step in the approval process. We cannot expand our operations until all approvals are gained. We are however, as ready as we can be to proceed as soon as this approval comes through.

I look forward to catching up with you around the site at some stage in the future.

All the best,

John Blanning
GM MCO

Good community relationships are paramount

Moolarben has recently appointed Scott Fittler as their Community Relations Coordinator. Scott is a Mudgee local who has spent the past 15 years working as a Real Estate Agent and has always enjoyed spending time with and helping the Mudgee community.

Having built so many strong relationships in the area, Scott sees his role with Moolarben Coal as an opportunity to drive outcomes that benefit the whole community. For those who don't know Scott, he enjoys spending time with his family and participating in triathlons when he gets the time.



High-tech simulator training is being used to train new operators and ensure the skills of existing employees remain fresh.

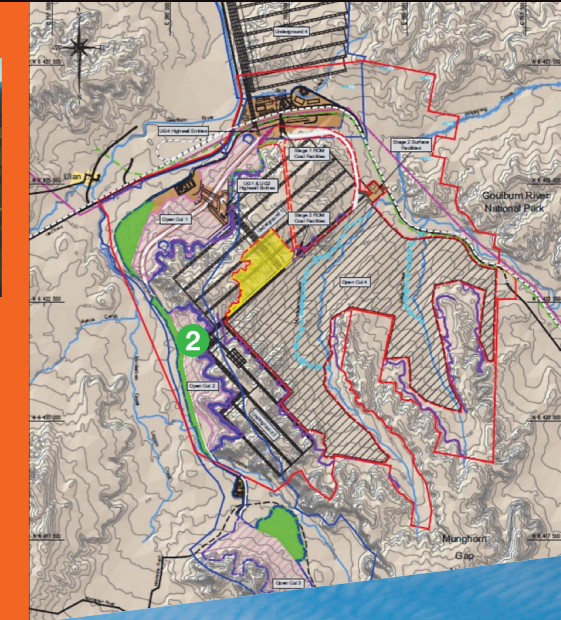
Moolarben Coal has been using simulator training for over 12 months now for Truck, Excavator and Face Shovel training with the capacity to extend across the whole fleet.

Before the introduction of simulator training operators were given a briefing and were then trained while on the job. The simulator replicates the Moolarben Coal mine allowing employees to virtually operate machinery around Moolarben before going onto the site, improving safety and highlighting errors before they occur. It also allows our operators to be comfortable and confident before working with the equipment on-site.

Designed to help identify areas of risk, improve safety and enhance efficiency, introduction of the simulator has proven to be a great investment in ensuring Moolarben Coal employees return home safely.

Work starts soon on Open Cut 2

Work will start soon on preparing for Moolarben Coal's second open cut mine near Mudgee.



Installation of security and construction of erosion control devices will be the first stage of the process. This will be followed by initial clearing and construction of the haul road. The first coal from the Open Cut 2 area is expected in June 2014.

Moolarben Coal was granted Stage 1 project approval in 2007 for three open cut mines and one underground mine. The Moolarben Coal Project started operations in 2009 at the Open Cut 1 area.

Any questions regarding the mining progress should be directed to Moolarben's Environment and Community Department 02 6376 1500.

Moolarben tour a popular choice



Mid Western Regional Council recently hosted the 2013 Local Government Forum with over 150 town planners attending the two-day conference. Planners came from throughout NSW, gathering to gain an insight into the local

region and the changing culture of planning. The planners were given the opportunity to take part in various local tourism activities with the mine tour proving to be the most popular choice.